

Tuesday
4/6

Thematic Music Cue Sheet

M. J. MINTZ (PATENT)
JULY 31, 1923.

FIRST NATIONAL PICTURES, INC.
presents

MILTON SILLS
in
"THE UNGUARDED HOUR"

with DORIS KENYON
Music compiled by Eugene Conte
A FIRST NATIONAL PICTURE

1 AT SCREENING Summer Evening (Mueller) 1 1/2 Min.

Musical notation for "Summer Evening (Mueller)". Includes tempo marking "Lento e malto" and dynamic marking "p". Copyright: 1925, by Forster Music Pub. Co.

2 (Title) VIRGINIA GILBERT'S Brown Eyes—Why Are You Blue (Meyer) 2 1/2 Min

Musical notation for "Brown Eyes—Why Are You Blue (Meyer)". Includes tempo marking "Mod.to" and dynamic marking "p". Copyright: 1925, by Henry Waterson.

3 (Action) ARGUMENT STARTS Incid. Symphony No. 28 (Damaur) 1/2 Min.

Musical notation for "Incid. Symphony No. 28 (Damaur)". Includes tempo marking "Allo. furioso" and dynamic marking "pp". Copyright: 1925, by Victor Play Music Co.

4 (Title) RUSSEL VAN Follow the Swallow (Henderson) 1/2 Min.

Musical notation for "Follow the Swallow (Henderson)". Includes tempo marking "For trot" and dynamic marking "mf". Copyright: 1925, by Victor Play Music Co.

5 (Action) RUSSEL AND VIRGINIA ALONE Corinne (Kay) 1 1/2 Min.

Musical notation for "Corinne (Kay)". Includes tempo marking "And.to Amoroso" and dynamic marking "p". Copyright: 1925, by Forster Music Co.

6 (Action) FADE-BACK TO PARTY Oh Baby (Donaldson) 1/2 Min.

Musical notation for "Oh Baby (Donaldson)". Includes tempo marking "Allo." and dynamic marking "mf". Copyright: 1925, by Irving Berlin.

7 (Action) TWO CROOKS ALONE Enigma (Borch) 1 1/2 Min.

Musical notation for "Enigma (Borch)". Includes tempo marking "Mod.to" and dynamic marking "pp". Copyright: 1925, by Novak & Son.

8 (Action) CLOSE-UP OF RUSSEL First Call of Spring (Smith) 3 Min.

Musical notation for "First Call of Spring (Smith)". Includes tempo marking "Allo. to grazioso" and dynamic marking "mf". Copyright: 1925, by Belwin, Inc.

MUSEUM

- 9 (Action) POLICE ENTER Pursuit (Breil) 1½ Min.
Con moto

 Coppr. 1925, by Sonnemann Music Co.
- Title ONE OF GUESTS—COCK-EYED Agitato No. 1 (Rapee-Axt) 1¼ Min.
All.^o

 Coppr. 1925, by Robbins-Engel, Inc.
- 11 (Action) FADE-BACK TO VIRGINIA AND FATHER... Second Misterioso a la Valse (Savino) 1¼ Min.
And.^{te} Mod.^{to}

 Coppr. 1925, by Robbins-Engel, Inc.
- 12 (Action) RUSSEL LEAVES ROOM Tender Appeal (Byford) ¼ Min.
And.^{te} espressivo

 Coppr. 1915, by Bosworth & Co.
- 13 (Action) VIRGINIA TAKES REVOLVER You're in Love (Friml) 3 Min.
Mod.^{to}

 Coppr. 1911, by G. Schirmer.
- 14 (Title) SO THAT'S HOW YOU SPEND Fleurette d'Amour (Fletcher) 2¾ Min.
All.^{to}

 Coppr. 1922, by Hawkes & Son.
- 15 (Action) RUSSEL IN HALL Early Roses (Baron) 2¼ Min.
All.^{to} scherzando

 Coppr. 1925, by Belwin, Inc.
- 16 (Title) CASTLE MONTEVERDE Gavotte (Raff) 2¾ Min.
All.^o vivo

 Coppr. 1912, by G. Schirmer.
- 17 (Title) THE STORM WILL BE THE In the Clouds (Rapee-Axt) 1½ Min.
And.^{te}

 Coppr. 1924, by Robbins-Engel, Inc.
- 18 (Action) CRASH Novelty Hurry (O'Hare) 1 Min.
All.^o con brio

 Coppr. 1920, by Oliver Ditson Comp.
- 19 (Title) I'M SORRY DUKE Mandolinata (Paladilhe) 3½ Min.
All.^{to}

 Coppr. 1922, by Carl Fischer.

20 (Title) **THESE AMERICAN GIRLS** Peg (Hauenschild) 2½ Min.

All. Mod. to
 Musical notation for 'THESE AMERICAN GIRLS' in treble clef, 2/4 time, key of G major. It begins with a piano (p) dynamic and a tempo marking of 'All. Mod. to'. The piece concludes with a copyright notice: 'Copr. 1922, by Photo Play Music.'

(Title) **ELENA D'ORORA** Serenade (Toselli) 2 Min.

All. Ho graz.
 Musical notation for 'ELENA D'ORORA' in treble clef, 3/4 time, key of G major. It begins with a piano (p) dynamic and a tempo marking of 'All. Ho graz.'. The piece concludes with a copyright notice: 'Copr. 1923, by The Boston Music Co.'

22 (Action) **ANDREA TYPING** Forget Me Not (Macbeth) 1½ Min.

All. Ho
 Musical notation for 'ANDREA TYPING' in treble clef, 2/4 time, key of G major. It begins with a mezzo-forte (mf) dynamic and a tempo marking of 'All. Ho'. The piece concludes with a copyright notice: 'Copr. 1913, by Carl Fischer.'

23 (Action) **VIRGINIA CRIES FOR HELP** Scherzo (Mendelssohn) 1 Min.

All. Ho Krace
 Musical notation for 'VIRGINIA CRIES FOR HELP' in treble clef, 3/4 time, key of G major. It begins with a piano (pp) dynamic and a tempo marking of 'All. Ho Krace'. The piece concludes with a copyright notice: 'Copr. 1922, by G. Schirmer.'

24 (Action) **VIRGINIA RESCUED** Miss Blue-Eyes (Bergh) 3 Min.

All. Ho
 Musical notation for 'VIRGINIA RESCUED' in treble clef, 2/4 time, key of G major. It begins with a mezzo-forte (mf) dynamic and a tempo marking of 'All. Ho'. The piece concludes with a copyright notice: 'Copr. 1923, by Belwin, Inc.'

25 (Action) **ELENA FALLS INTO WATER** Repeat No. 18 "Novelty Hurry" 1 Min

All. Ho con brio
 Musical notation for 'ELENA FALLS INTO WATER' in treble clef, 2/4 time, key of G major. It begins with a piano (p) dynamic and a tempo marking of 'All. Ho con brio'. The notation shows a few notes before the staff ends.

26 (Action) **ELENA RESCUED** Chanson Melancholique (Collinge) ½ Min.

And. Ho
 Musical notation for 'ELENA RESCUED' in treble clef, 3/4 time, key of G major. It begins with a piano (p) dynamic and a tempo marking of 'And. Ho'. The piece concludes with a copyright notice: 'Copr. 1920, by Belwin, Inc.'

27 (Title) **FOR ONE WHO DOES NOT** Fragrance of Spring (Sanders) 3 Min.

All. Ho
 Musical notation for 'FOR ONE WHO DOES NOT' in treble clef, 2/4 time, key of G major. It begins with a piano (p) dynamic and a tempo marking of 'All. Ho'. The piece concludes with a copyright notice: 'Copr. 1921, by Belwin, Inc.'

28 (Action) **FADE-OUT OF VIRGINIA'S FATHER** Pomone (Waldteufel) 2½ Min

Valse
 Musical notation for 'FADE-OUT OF VIRGINIA'S FATHER' in treble clef, 3/4 time, key of G major. It begins with a piano (p) dynamic and a tempo marking of 'Valse'. The piece concludes with a copyright notice: 'Copr. by Emil Clacher.'

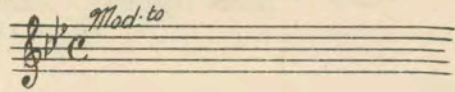
29 (Action) **ANDREA AND VIRGINIA ALONE** THEME: The Song of Songs (DeMoya) 1½ Min

Mod. Ho
 Musical notation for 'ANDREA AND VIRGINIA ALONE' in treble clef, 2/4 time, key of G major. It begins with a mezzo-forte (mf) dynamic and a tempo marking of 'Mod. Ho'. The piece concludes with a copyright notice: 'Copr. 1914, by Chappell & Co.'

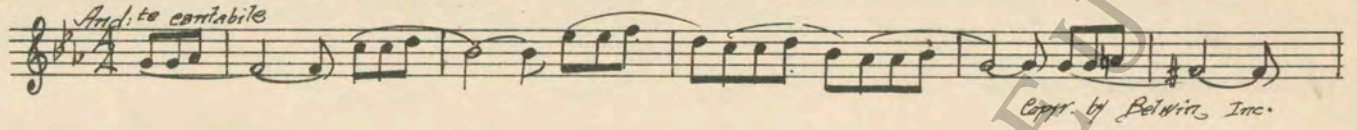
30 (Action) **VIRGINIA LEAVES ANDREA** Magic Love (Bradford) 1½ Min.

Valse lento
 Musical notation for 'VIRGINIA LEAVES ANDREA' in treble clef, 3/4 time, key of G major. It begins with a piano (p) dynamic and a tempo marking of 'Valse lento'. The piece concludes with a copyright notice: 'Copr. 1926, by Sam Fox Pub. Co.'

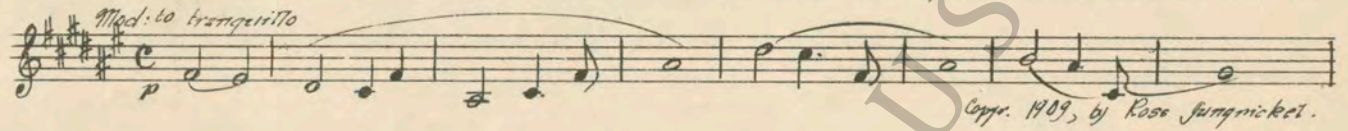
31 (Action) VIRGINIA OPENS BALCONY WINDOWS Repeat Theme No. 29 2 Min.



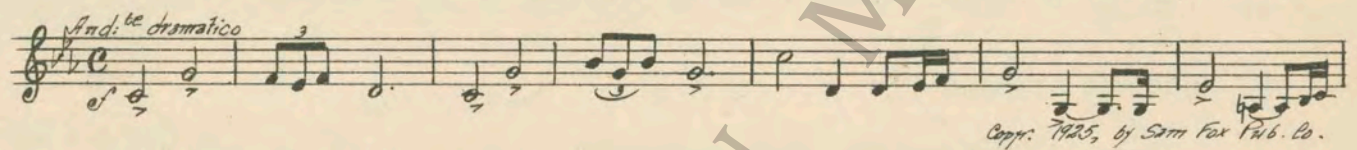
32 (Action) VIRGINIA LEAVES BALCONY Mon Amour (Baron) 3 Min.



33 (Action) VIRGINIA LEAVES ROOM Kamenoi Ostrow (Rubenstein) 2 Min.



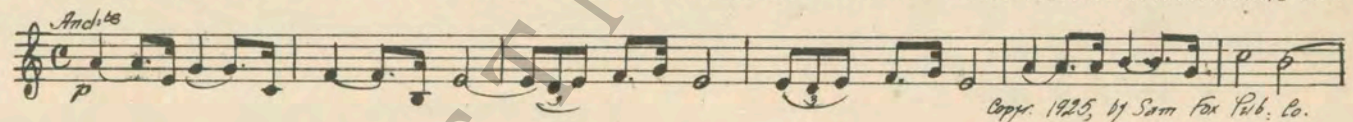
34 (Title) STELIO Cup of Bitterness (Zamecnik) 3 Min



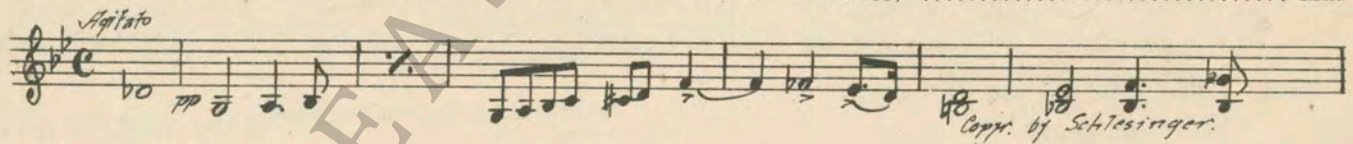
35 (Action) COUNTESS RECEIVES TELEGRAM Jollity (Zamecnik) 1 Min.



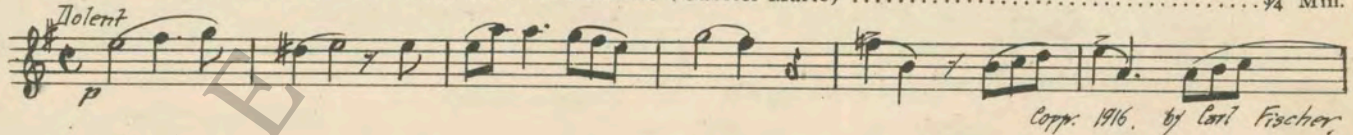
36 (Action) STELIO ENTERS VIRGINIA'S ROOM Despised (Zamecnik) 3 1/2 Min



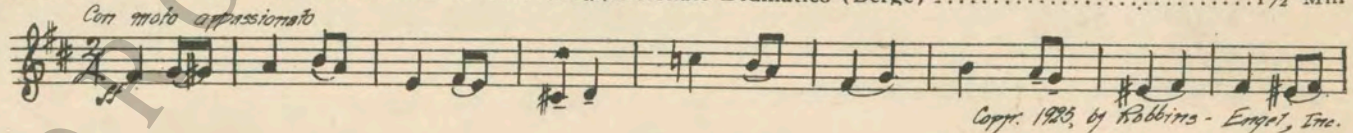
37 (Action) MAID OPENS DOOR—ANDREA ENTERS Situazione Pericolosa (Bece) 4 Min



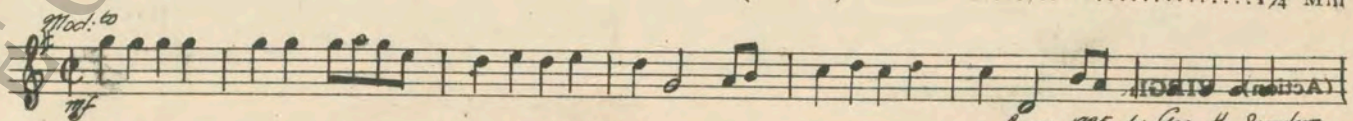
38 (Action) ANDREA SEES ELENA'S BODY Lamento (Gabriel-Marie) 3/4 Min.



39 (Action) ANDREA ENTERS STELIO'S ROOM Appassionato Dramatico (Bergé) 1 1/2 Min



40 (Action) EXTERIOR—VIRGINIA AND ANDREA The Show-Off (Sanders) 1 1/4 Min



Country of Origin, U. S. A.

THE END

Complete Orchestrations and single parts of all compositions contained herein can be purchased from CAMEX MUSIC SERVICE CORPORATION, 112-118 West 44th Street, New York City

95:2553:2