

M. J. MINTZ (PATENT)
JULY 31, 1923

WILLIAM FOX FILM PRODUCTION
MADGE BELLAMY
in
"VERY CONFIDENTIAL"

Compiled by Michael P. Krueger
The timing is based on speed of 12 minutes per reel

*One
I fell in love
Amy Van Stone
Cradle in Caroline
I show Bond
Stom on the Kelta
Mary*

*Co.
3/1/2/3/4/5/6/7/8/9/10/11/12/13/14/15/16/17/18/19/20/21/22/23/24/25/26/27/28/29/30/31/32/33/34/35/36/37/38/39/40/41/42/43/44/45/46/47/48/49/50/51/52/53/54/55/56/57/58/59/60/61/62/63/64/65/66/67/68/69/70/71/72/73/74/75/76/77/78/79/80/81/82/83/84/85/86/87/88/89/90/91/92/93/94/95/96/97/98/99/100*

*Ordered
Show well
The man I love
Harris
me*

MUSEUM

1 (AT SCREENING) Is' It Possible? (Woods) ¾ Min.

Ain't she sweet

Mod^{to}
copyr 1927 Irving Berlin Inc.

2 (Title) A MODERN STORE A Hunting Scene (Bucalossi) ½ Min.

Now

All^o merrily
copyr Carl Fischer.

3 (Title) MADGE BURKE Al Fresco (Herbert) 2 Min.

*Miscellaneous
Bell*

All^o Giocoso.
copyr 1904 M. Wilmark & sons.

4 (Title) NOW LET ME SHOW YOU Stop It (Kaufman) 2¼ Min.

*Keep
going*

All^o
copyr 1920 Sam Fox

5 (Title) YOUR CAR IS WAITING Little Charmer (Hollaender) 1 Min.

Theme

Polka
copyr 1910 M. Wilmark & sons.

6 (Action) MADGE BELLAMY ENTERS LARGE DRESSING ROOM Ain't She Sweet? (Ager) 1¼ Min.

Ain't she sweet

Mod^{to}
copyr 1927 Ager Yelland & Bornstein Inc.

7 (Title) STELLA—MADGE'S PAL Laces and Graces (Salzer) 2 Min.

*Laces
Graces*

All^o
copyr 1903 M. Wilmark & sons.

8 (Action) MADGE BELLAMY SEES YOUNG MAN THROUGH LIFE SAVER Repeat No. 1 "Is It Possible?" 1½ Min.

9 (Action) TENT IS SEEN IN STORE Miss Antique (Trinkaus) 1½ Min.

*Thinking
of you
Hello cutie
Wola
Cupid's
Carriage*

All^o
copyr 1908 M. Wilmark & sons.

10 (Action) MADGE SLIDES DOWN TENT Repeat No. 1 "Is It Possible?" 1¼ Min.

11 (Action) DOOR OF GENERAL MANAGER'S OFFICE SEEN Pastime (Clutsam) 1½ Min.

Perplexity

All^o
copyr 1926 Hawkes & son.

marvelous *Ain't she sweet*

12 (Title) CLEAR LAKE-NAMED Ain't She Sweet? (Ager) 2¼ Min.

Mod^o

Copyright 1927 Ager Yellen & Bernstein Inc.

Irish Lady

13 (Action) MADGE SEEN AT HOTEL REGISTER: Repeat No. 9 "Miss Antique" 2 Min.

14 (Title) WHAT'S THE IDEA Repeat No. 1 "Is It Possible?" 1¼ Min.

15 (Action) STELLA SEES MAN IN AUTOMOBILE Dew-Dew-Dewy Day (Johnson) 1¼ Min.

Irish

Dewey Day

Mod^o sva

Copyright 1927 Irving Berlin Inc.

16 (Title) THE FOLLOWING DAY Coasting (Ring-Hager) 1 Min.

Al dresor

Gaiop

Copyright 1926 Sam Fox Pub. Co.

17 (Title) AS I SAID That's a Lot of Bunk (Henshaw) ½ Min.

Jumping along

Mod^o

Copyright 1924 Edie B. Marks Co.

Somewhat

18 (Title) I WOULD BE MUCH Repeat No. 16 "Coasting" 1 Min.

19 (Action) STELLA SEEN WITH CHAUFFEUR Repeat No. 17 "That's a Lot of Bunk" ¾ Min.

20 (Action) MOTOR BOAT SEEN Speed (Frey) ¾ Min.

Speed

by 7/8

All^o sva

Copyright 1925 Robbins Music Corp.

21. (Action) COMMODORE FALLS OVERBOARD Comedy Excitement (Zamecnik) ½ Min.

All^o

Copyright 1927 Sam Fox Pub. Co.

22 (Action) MADGE BELLAMY LANDS IN WATER Heave Ho! (Copping) ½ Min.

In the pen

All^o

Copyright 1927 Irving Berlin Stand. M. Co.

23 (Action) ROGER PICKS UP MADGE Repeat No. 1 "Is It Possible?" ¾ Min.

24 (Action) INTERIOR OF HOME SEEN Stray Sunbeams (Huerter) ¾ Min.

Beautiful

All^o Mod^o

Copyright 1925 G. Schirmer Inc.

Key Ray

25 (Action) CHANGE OF SCENE TO MADGE AND STELLA In a Cozy Corner (Bratton) 1¼ Min.

Spangles

All^o Mod^o

Copyright 1901 W. Willmetts & Sons.

Say it again

26 (Action) KNOCK ON DOOR SEEN Repeat No. 17 "That's a Lot of Bunk" 1¼ Min.

27 (Title) WHY YOU'RE NOTHING Chatter (Kahn) ¾ Min.

All^o
8va bassa

Copyright 1926 Sonnemant Music Co.

28 (Action) CHANGE OF SCENE TO LAKE Repeat No. 1 "Is It Possible?" 1¼ Min.
NOTE: Play song style—slowly.

29 (Action) AUTO DRIVES UP Fluffy Ruffles (Green) 1 Min.

All^o
8va

Copyright 1919 Sam Fox Pub. Co.

30 (Action) CHAUFFEUR SEEN WORKING ON CAR Ach Louie (Fisher) ¼ Min.
NOTE: Play very softly.

Fox trot tempo.

Copyright 1923 Fred Fisher Inc.

31 (Action) STELLA WALKS OVER TO MADGE Repeat No. 1 "Is It Possible?" 1¼ Min.
NOTE: Play song style—slowly.

GEORGE

32 (Action) MADGE AND STELLA APPROACH CHAUFFEUR En Visite (McDonald) 3/4 Min.

Musical notation for item 32, featuring a treble clef, a key signature of one sharp (F#), and a 2/4 time signature. The tempo is marked *All^o*. The melody consists of eighth and quarter notes. Copyright 1927 Sonnemann music co.

33 (Action) FADE-IN TO MADGE DRIVING CAR..... Hunkatin (Levy) 1 1/4 Min.

Musical notation for item 33, featuring a treble clef, a key signature of one flat (Bb), and a 2/4 time signature. The tempo is marked *All^o Mod^o*. The melody includes a long note with a slur. Copyright 1916 Belwin Inc.

34 (Action) CAR CRASHES INTO TREE NOTE: Start very slowly and work up to an Allegro. Burlesque on Chopin's Funeral March (Kempinski) 1/2 Min.

Musical notation for item 34, featuring a treble clef, a key signature of one flat (Bb), and a common time signature. The tempo is marked *Burlesque*. The melody is a simple, rhythmic line. Copyright 1927 Belwin Inc.

35 (Action) INSERT OF POSTER—"FOURTH ANNUAL LADIES AUTO RACE" Carnival Frolics (Lakay) 1 1/2 Min.

Musical notation for item 35, featuring a treble clef, a key signature of one sharp (F#), and a 2/4 time signature. The tempo is marked *Galop*. The melody is a lively, rhythmic piece. Copyright 1927 Irving Berlin Inc.

36 (Action) ROGER WALKS OVER TO MADGE Repeat No. 6 "Ain't She Sweet?" 3/4 Min.

Musical notation for item 36, featuring a treble clef, a key signature of two flats (Bb, Eb), and a common time signature. The tempo is marked *Moderate*. The notation shows a few notes on a staff.

37 (Title) I WAS MAKING A FEW NOTE: Play very softly. The Get-Away (Frey) 1 1/4 Min.

Musical notation for item 37, featuring a treble clef, a key signature of one flat (Bb), and a 2/4 time signature. The tempo is marked *Galop vivo*. The melody is a rhythmic piece. Copyright 1925 Robbins music corp.

38 (Title) —AND RATHER THAN NOTE: Drummer watch for supposed auto horn. Repeat No. 34 "Burlesque on Chopin's Funeral March" 1/2 Min.

Musical notation for item 38, featuring a treble clef, a key signature of one flat (Bb), and a common time signature. The tempo is marked *Burlesque*. The notation shows a few notes on a staff.

39 (Title) SUCH AN INTERESTING Repeat No. 17 "That's a Lot of Bunk" 1 1/4 Min.

Musical notation for item 39, featuring a treble clef, a key signature of one flat (Bb), and a common time signature. The tempo is marked *Mod^o*. The notation shows a few notes on a staff.

40 (Title) YOU CAN DRIVE MY CAR A Hot Time (Beyer) 1/4 Min.

Musical notation for item 40, featuring a treble clef, a key signature of one sharp (F#), and a 2/4 time signature. The tempo is marked *Marcia Giusto*. The melody is a rhythmic piece. Copyright Carl Fischer.

41 (Action) CHANGE OF SCENE TO MADGE AND STELLA IN ROOM Sweet Dreams of Home (Englemann) 1 1/4 Min.

Musical notation for item 41, featuring a treble clef, a common time signature. The tempo is marked *And^{te} con moto*. The melody is a simple, rhythmic line. Copyright 1908 W. Witmark & Sons.

42 (Action) CHANGE OF SCENE TO MISS TRAVERS IN ROOM Ondes Mysterieuses (Franceschi) 1/2 Min.

Musical notation for item 42, featuring a bass clef, a key signature of one sharp (F#), and a common time signature. The tempo is marked *All^o Mod^o myst*. The melody is a simple, rhythmic line. Pub by Sonnemann music co.

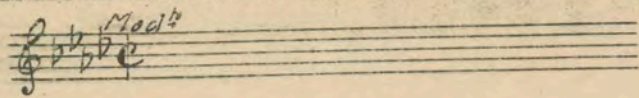
43 (Action) CHANGE OF SCENE TO MADGE AND STELLA Repeat No. 41 "Sweet Dreams of Home" 1/2 Min.

Musical notation for item 43, featuring a treble clef, a common time signature. The tempo is marked *And^{te} con moto*. The notation shows a few notes on a staff.

44 (Action) BURGLAR SEEN AGAIN Eccitamento (Retlaw) 2 Min.

Musical notation for item 44, featuring a treble clef, a key signature of one sharp (F#), and a 2/4 time signature. The tempo is marked *All^o Agitato*. The melody is a rhythmic piece. Copyright 1925 Feature music corp.

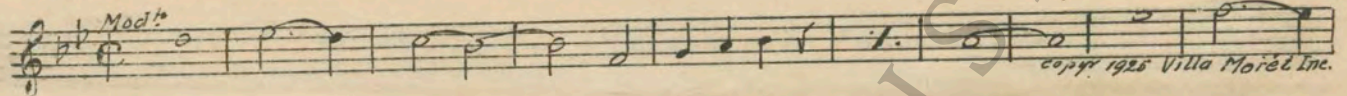
45 (Title) I'M MORE PROUD Repeat No. 6 "Ain't She Sweet?" ¾ Min.



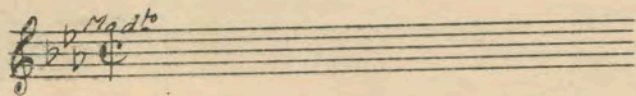
46 (Title) MAY I ASK WHAT YOU The Awakening (Zamecnik) ¾ Min.



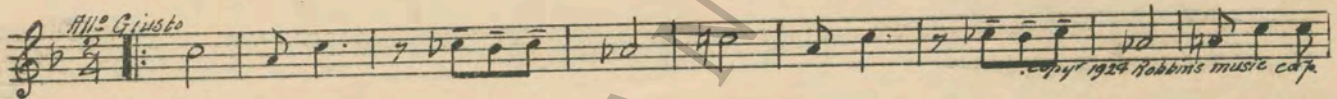
47 (Action) ROGER AND MADGE WALK AWAY FROM GROUP Moonlight and Roses (Moret) 1½ Min.



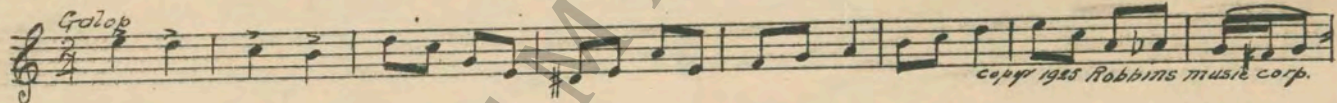
48 (Action) MADGE ENTERS ROOM Repeat No. 1 "Is It Possible?" (song style) 1 Min.



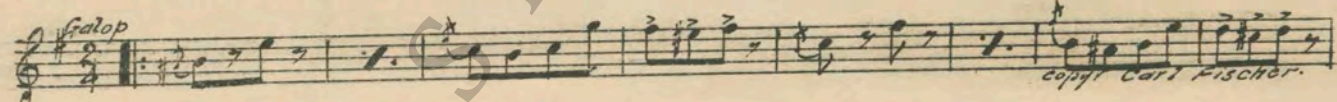
49 (Title) BEFORE THE RACE Oh Mister (Frey) 1¾ Min.



50 (Action) AUTO RACE STARTS Zip (Frey) 3 Min.



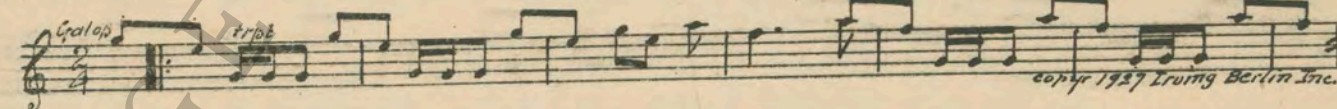
51 (Title) HOLD EVERYTHING! Make Way (Laurendeau) 1¾ Min.



52 (Title) THE SUMMIT Flying Hurry (Carbonara) 3½ Min.



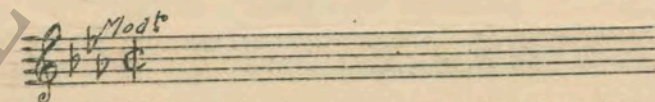
53 (Action) MISS TRAVERS' CAR OVERTURNS Down the Stretch (Balfmoor) 1½ Min.



54 (Action) FINISH OF RACE Joyous Allegro (Borch) 1 Min.



55 (Title) I'M NOT MISS MELBOURNE Repeat No. 1 "Is It Possible?" 1½ Min.



NOTE: Start slowly in song style and work up for a Grandioso finish.

THE END

Printed in U. S. A.

Complete orchestrations and single piano parts of each separate number contained hereon, can be purchased from CAMEO MUSIC SERVICE CORPORATION, 315-317 WEST 47TH STREET, NEW YORK CITY

95:2565:1