



THE WALTZ DREAM

AN UFA PRODUCTION

Music compiled by Ernst Luz

Distributed by

METRO-GOLDWYN-MAYER

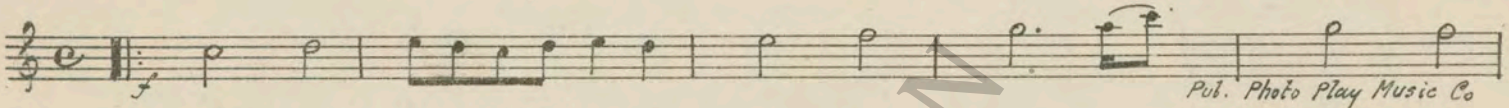
Length of film 8 reels (7382 feet)

Maximum projection time 1 hour, 25 minutes

For Overture play introduction and No. 1 of "Waltz Dream Waltz," then play

No. 1 of Waltz for exit.

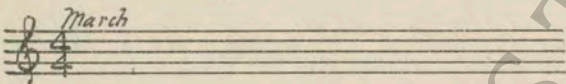
- 1 AT SCREENING March and Entrance from "The Waltz Dream" (Straus) 1½ Min.
(PURPLE)



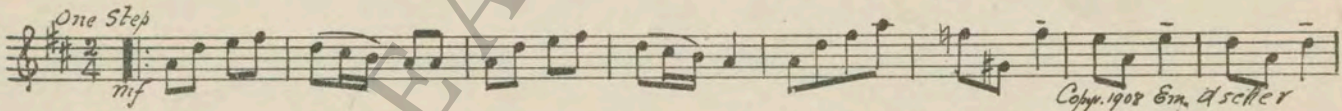
NOTE: Play four bars Fanfare and first 16 bars of March and segue.
SEGUE On the Beautiful Blue Danube (Strauss).



- 2 (Title) THE IMPERIAL PALACE Repeat No. 1 (PURPLE) 2 Min.



NOTE: Play four bars Fanfare and first 16 bars of March and segue.
SEGUE Waltz Dream One-Step (Strauss).



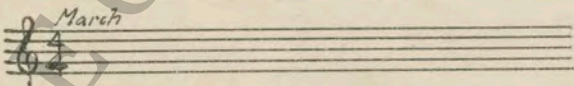
- 3 (Action) COUNTESS WAVES HANDKERCHIEF Regal Interlude from "The Waltz Dream" (Straus) 4¼ Min.
(BROWN)



NOTE: Play once through and segue.
SEGUE My Lady's Boudoir (Schertzinger).



- 4 (Action) HORSES AND CARRIAGE SHOW ON SCREEN Repeat No. 1 (PURPLE) 1½ Min.



- 5 (Action) PRINCESS' AUNT GETS INTO CARRIAGE.... Ruritania (Schertzinger) 1½ Min.



6 (Action) CARRIAGE STOPS AND PRINCESS GETS OUT On the Beautiful Blue Danube (Strauss) (YELLOW).....1 Min.

Valse

NOTE: Begin at Tempo di Valse in introduction. Copyr. 1909 E. Ascher.

7 (Action) PRINCESS AND COUNT NIKI WALK FROM MONUMENT A Husband's Love from "A Waltz Dream" (Strauss) (WHITE)1 Min.

All^o

Copyr. 1908 E. Ascher

8 (Title) TO GRINSING Lt. 2/4 Movement from "Waltz Dream" Selection (Strauss)...3/4 Min.

Mod^{to}

Copyr. E. Ascher

9 (Action) WINE GARDEN SCENE Waltz Dream Selection (Strauss)5 Min.

All^o mod^{to}

Copyr. E. Ascher

10 (Action) FADE-OUT OF WINE GARDEN SCENE AFTER GUESTS CLAP HANDS IN TEMPO TO MUSIC Repeat No. 6 (YELLOW)2 Min.

Valse

11 (Action) FADE-OUT OF COUNT NIKI AS HE Repeat No. 1 (PURPLE)1 1/2 Min.

March

12 (Action) FADE-OUT OF PRINCESS WAVING FROM AUTO Kewpies' Rendezvous (Kempinski)1 3/4 Min.*

Mod^{to}

Copyr. Photo Play Music.

13 (Title) LIEUTENANT, YOU HAVE DISCHARGED... Waltz Dream Selection (Strauss)3 3/4 Min.

All^o mod^{to}

Copyr. E. Ascher

NOTE: Play 23 bars 2/4 introduction and "Love's Rondelay" 3/4.
 SEGUE A Husband's Love from "The Waltz Dream" (Strauss) (WHITE).

And^{te} grazioso

Pub. by Photo Play Music

14 (Action) FADE-OUT AFTER TITLE: "AND I AM TO MARRY" Repeat No. 1 (PURPLE)1 1/2 Min.

March

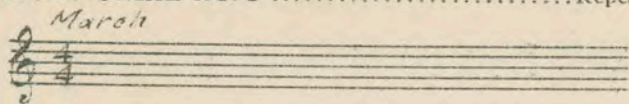
15 (Action) FADE-OUT OF COUNT NIKIE AS HE PUTS HAND TO HEAD Repeat No. 3 (BROWN)1 Min.

Mod^{to}

16 (Title) PATIENCE, GENTLEMEN Repeat No. 1 (PURPLE)1 Min.

March

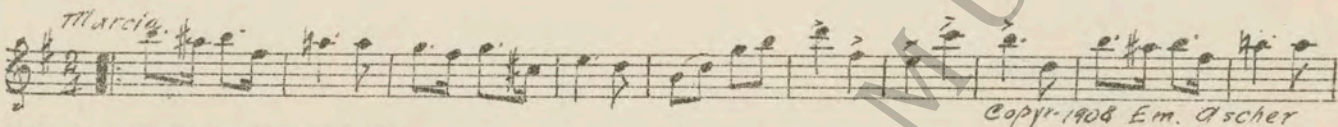
17 (Title) CEREMONIAL NO. 2 Repeat No. 16 (from beginning) (PURPLE) ¾ Min



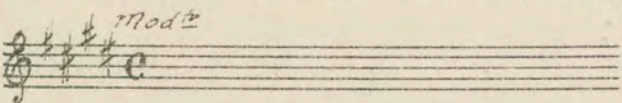
18 (Action) CHANCELLOR MOTIONS TO COUNT NIKI... A Husband's Love (WHITE) 2½ Min.



19 (Action) KING STANDS UP ON THRONE Fanfare or Regal Theme ¼ Min.
 20 (Title) WEDDING CEREMONIALS Kissing Time from "A Waltz Dream" (Strauss) 1 Min.



21 (Action) FADE-OUT AFTER NIKI KISSES PRINCESS' FOREHEAD Repeat No. 3 (BROWN) 4 Min.



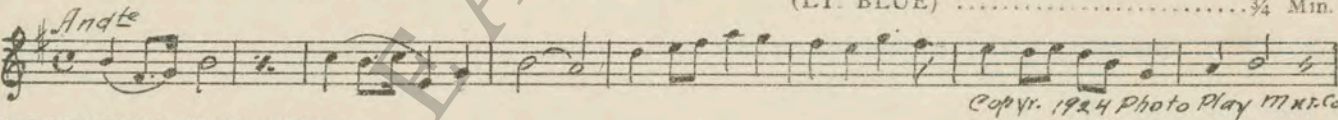
NOTE: Play once and segue.
 SEGUE A Husband's Love (WHITE).



22 (Title) DO YOU SHOOT TO ORDER Regal Fanfare and Cannon shots ¼ Min.
 23 (Action) SHOTS FIRED Love's Rondelay from "Waltz Dream Waltz" (Strauss) 1½ Min.



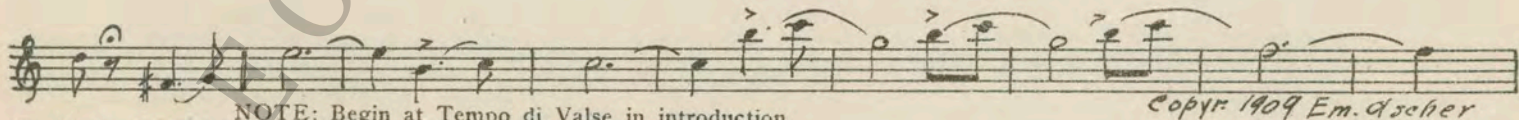
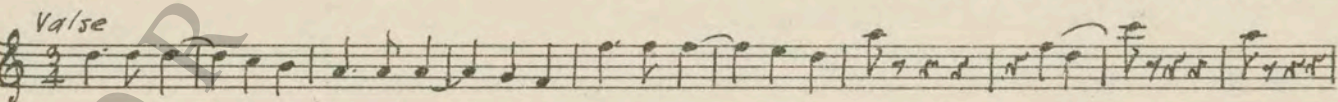
24 (Action) NIKI WALKS OUT—ENTERS OWN ROOM AND TAKES OFF UNIFORM Joy Through Tears (Schertzing) (last strain only) (LT. BLUE) ¾ Min.



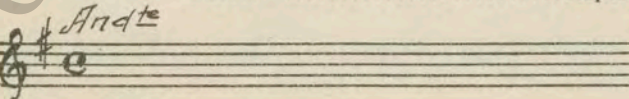
25 (Title) FAUSENBERG WAS GAYLY CELEBRATING Waltz Dream March (Strauss) 1½ Min.



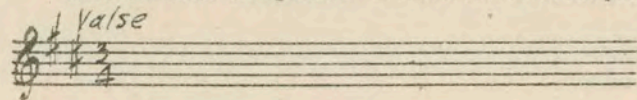
26 (Action) LADY ORCHESTRA LEADER ON SCREEN... Wiener Blut Waltzes (Strauss) 1½ Min.



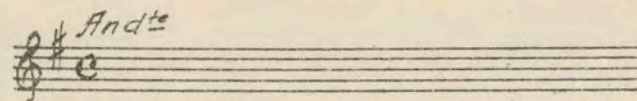
27 (Action) LADY ORCHESTRA LEADER SHOWS AND STOPS PLAYING AFTER TITLE: "HOW VULGAR" Repeat No. 24 (LIGHT BLUE) 1 Min.



28 (Action) ORCHESTRA BEGINS TO PLAY AFTER RECEIVING REQUEST Repeat No. 6 (YELLOW) 2 Min.



29 (Action) LONG SHOT OF ORCHESTRA—ORCHESTRA STOPS PLAYING Repeat No. 24 (LIGHT BLUE) ¼ Min.

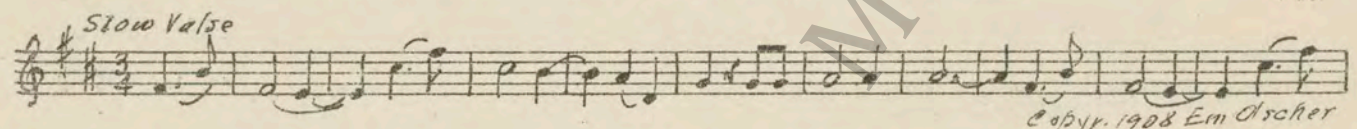


30 (Action) STREET SCENE 2/4 Verse of "Kiss Duet" from "Waltz Dream Selection" (Strauss) 3½ Min.

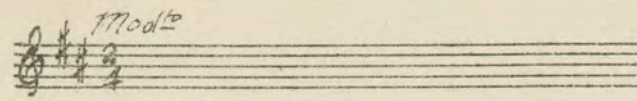


NOTE: Play twice and segue.

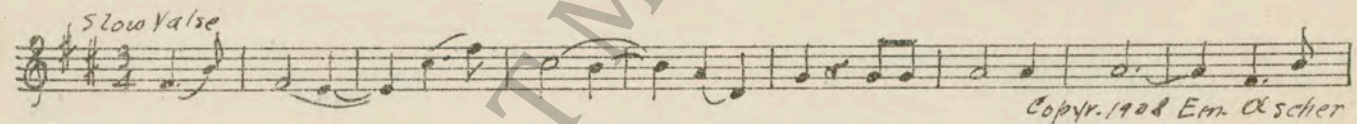
SEGUE Waltz Chorus of "Kiss Duet" (Strauss).



31 (Action) INTERIOR SCENE Repeat No. 30 "Kiss Duet" Verse 1¼ Min.



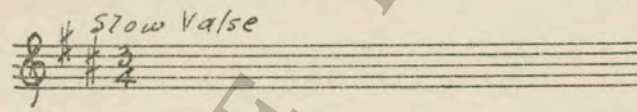
32 (Action) FADE-OUT AS MAN DRINKS "Kiss Duet" Chorus (Strauss) ½ Min.



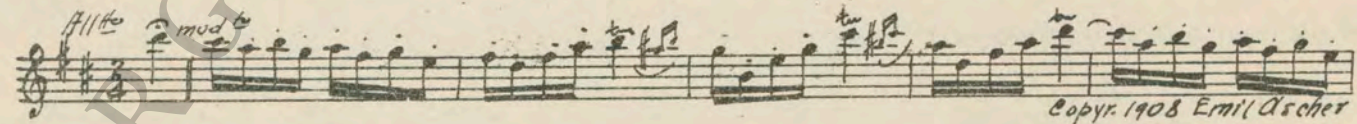
33 (Action) FRANZI PUTS HEAD UP AGAINST NIKI'S FACE Kissing Time Chorus from "Waltz Dream" Selection (Strauss) 1 Min.



34 (Action) SECOND SCENE SHOWING SERENADERS MARCHING Repeat No. 32 "Kiss Duet" Chorus ½ Min.



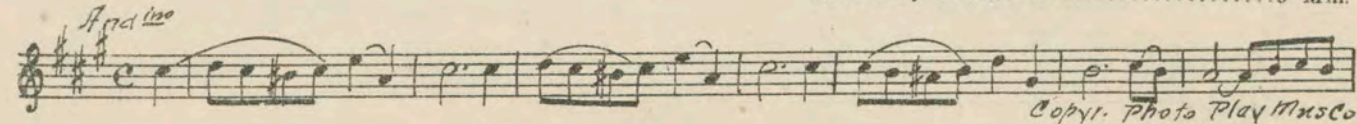
35 (Action) FRANZI ENTERS HOUSE Piccolo from "Waltz Dream" (Strauss) ¾ Min.



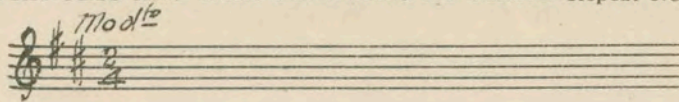
36 (Action) PRINCESS IN BED SHOWS Reverie and Rondeau (Schertzinger) ¾ Min.



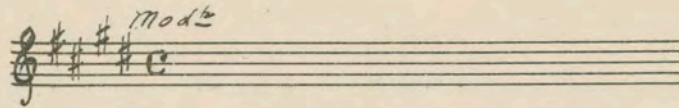
37 (Title) SOLEMN, GLOOMY DAYS A Husband's Love from "Waltz Dream" (Verse) (Strauss) (WHITE) 3 Min.



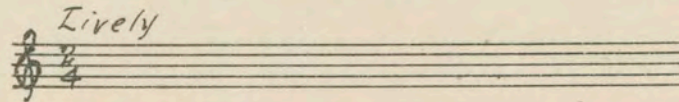
38 (Action) PRINCESS AND NIKI STANDING AT PIANO. Repeat No. 30 "Kiss Duet" 1½ Min.



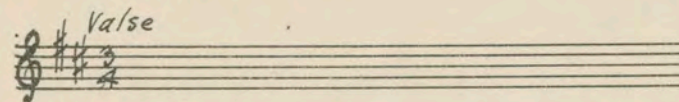
39 (Action) FRANZI POURS COFFEE Repeat No. 3 (BROWN) 1½ Min.



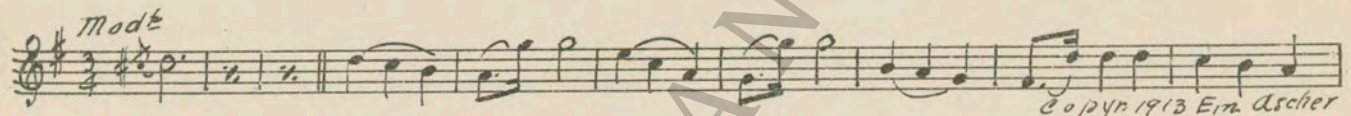
40 (Action) CHANCELLOR LEAVES HOUSE Repeat No. 33 "Kissing Time" Chorus ½ Min.



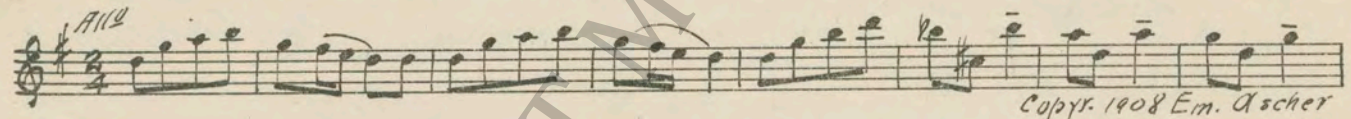
41 (Title) TO BECOME VIENNESE Repeat No. 6 (YELLOW) (Piano Alone) ½ Min.



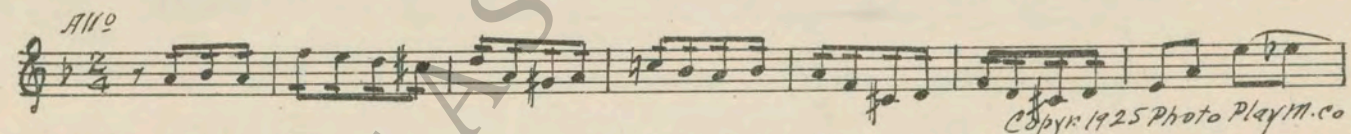
42 (Action) LADY ORCHESTRA SHOWS Tales from the Vienna Woods (Strauss) 2 Min.



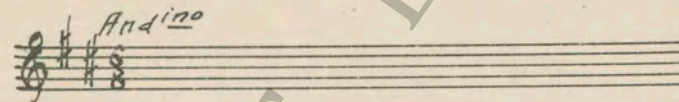
43 (Action) LONG SHOT OF ORCHESTRA PLAYING.....Waltz Dream Selection (from beginning) (Strauss) 3¼ Min.



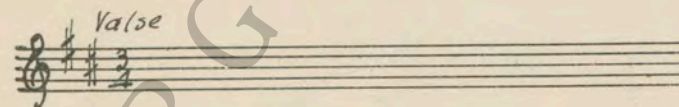
44 (Title) I'M GOING TO MEET HIM TONIGHT Incid. Symphony No. 32 (Kempinski) ¾ Min.



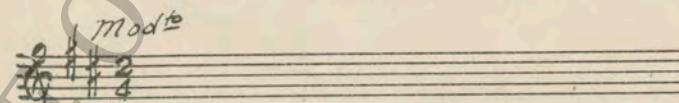
45 (Action) INTERIOR SCENE Repeat No. 18 (WHITE) (last 8-bars of chorus short) ½ Min.



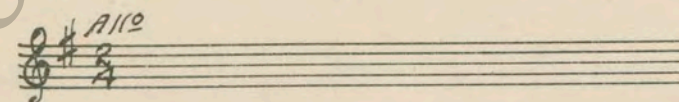
46 (Action) FRANZI LEAVES PRINCESS' ROOM Repeat No. 6 (YELLOW) (Violin alone, then add orchestra to screen action) ¾ Min.



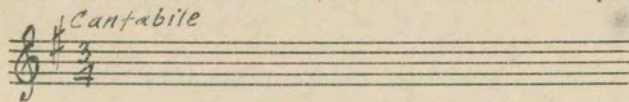
47 (Action) NIKI SEES FRANZI Repeat No. 30 "Kiss Duet" 1¾ Min.



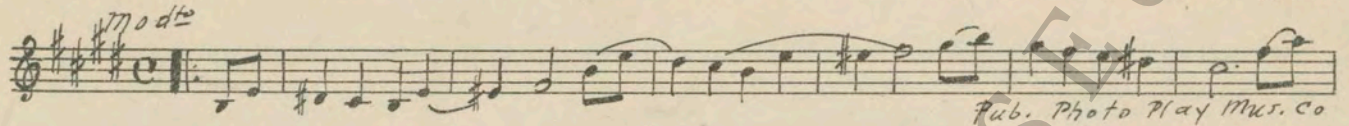
48 (Title) FRANZI HAD REFORMED THE PRINCESS... Repeat No. 43 "Waltz Dream" Selection 1¼ Min.



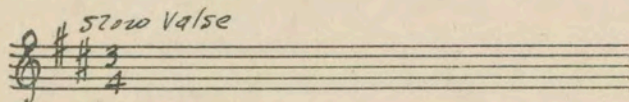
49 (Action) NIKI EATS CAKE Repeat No. 23 "Love's Rondelay" (Open with Piano alone).... ¾ Min.



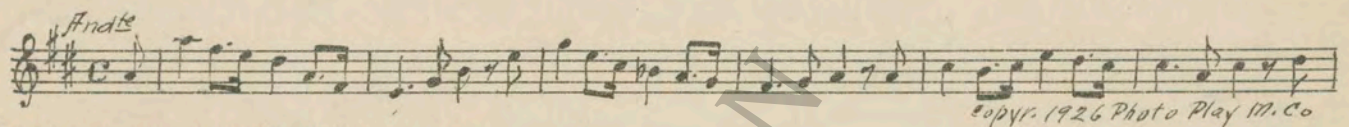
50 (Action) NIKI STANDS UP AFTER WRITING LETTER Regal Interlude from "Waltz Dream" (Strauss) (BROWN)... ¾ Min.



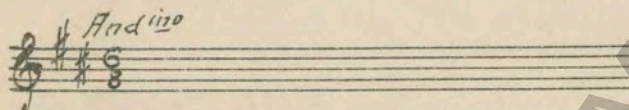
51 (Action) FRANZI IN PALACE HALL—SEES NIKI Repeat No. 32 "Kiss Duet" Chorus 1 Min.



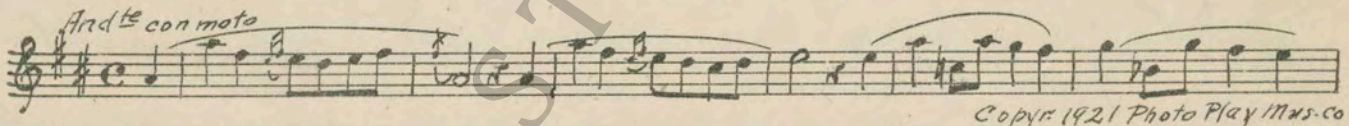
52 (Action) NIKI KISSES FRANZI Regrets (Kempinski) 1½ Min.



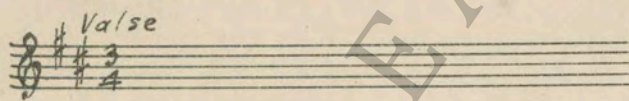
53 (Action) FRANZI SITS DOWN AT PIANO AND BOWS HEAD Repeat No. 18 (WHITE) 2½ Min.



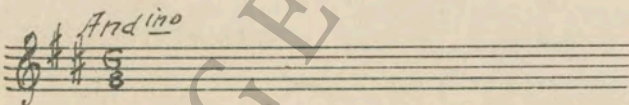
NOTE: Play one chorus and segue.
SEGUE Love's Fantasy (Frommel).



54 (Action) FRANZI PUTS FINGERS ON PIANO KEYS... Repeat No. 6 (YELLOW) (Piano alone) 1½ Min.



55 (Action) PRINCESS STOPS PLAYING PIANO IN CLOSE-UP BEFORE KING CLOSSES Repeat No. 18 (WHITE) 1 Min.



NOTE: Play once through to end fade-out as Franzi leaves Palace.
THE END

IMPORTANT NOTE:—The repetition of numbers in this cue sheet is simplified by the use of the "LUZ" SYMPHONIC COLOR GUIDE, sold by Music Buyers Corporation, 1520 Broadway, N. Y. C. The color suggested for repetition of numbers designates the Mood or Emotion and is used as a code for such repetitions.

Country of Origin, U. S. A.

Complete orchestrations and single piano parts of each separate number contained hereon, can be purchased from CAMEO MUSIC SERVICE CORPORATION, 315-317 West 47th Street, New York City.