

DVII 86

Thematic Music Cue Sheet

M. J. MINTZ (PATENT)
JULY 31, 1923



PETER B. KYNE'S
WAR PAINT

starring
TIM McCOY
with
Pauline Starke and Karl Dane
Continuity by Charles Maigne

Directed by
W. S. VANDYKE

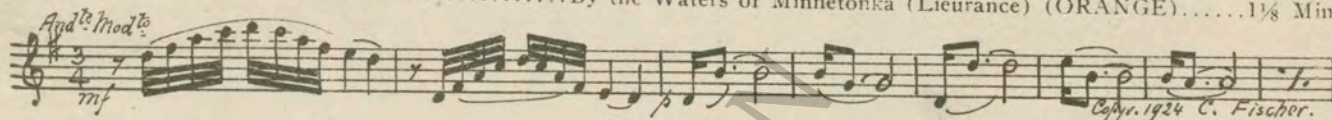
Music compiled by Ernst Luz

A METRO-GOLDWYN-MAYER PICTURE

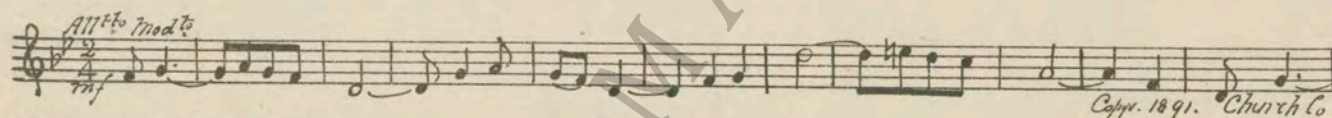
Length of film 6 reels (5074 feet).

Maximum projection time 1 hour.

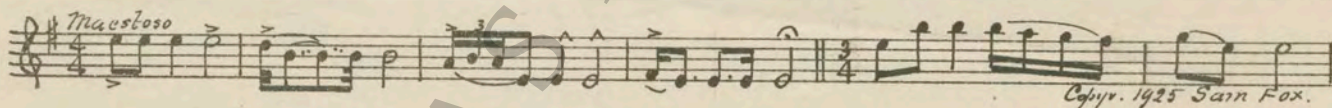
1 AT SCREENINGBy the Waters of Minnetonka (Lieurance) (ORANGE).....1½ Min.



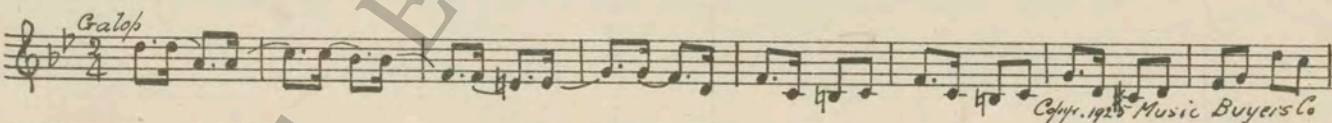
2 (Title) TIME 1887Indian War Dance (Bellstedt) (LIGHT BLUE)1½ Min.



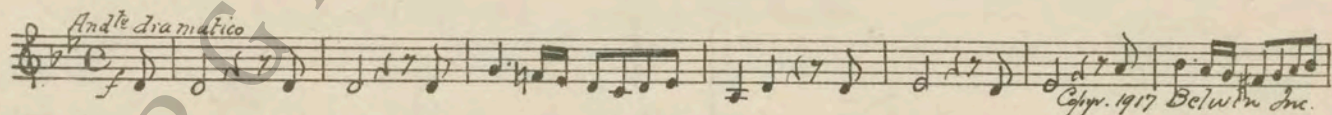
3 (Action) FADE-OUT—CLOSE-UP OF INDIAN WITH HATCHETFrom An Indian Pueblo (Nelson) (BROWN)1½ Min.



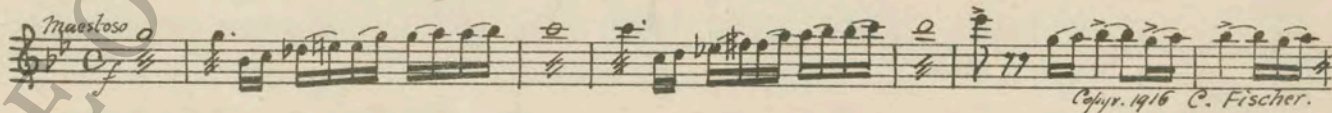
4 (Title) NO LET THERE BE PEACERadio Galop (Bub)¼ Min.



5 (Action) SOLDIER DISMOUNTSDramatic Recitative No. 1 (Levy) (RED)1½ Min.



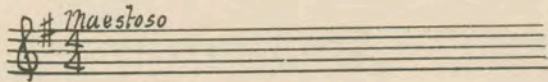
6 (Action) INDIAN ON HORSEBACK THROWS KNIFE TO LIEUTENANTAgitato (Lake)2¼ Min.



7 (Action) INDIAN RUNS OFF20th Century Galop (Bub)1½ Min.



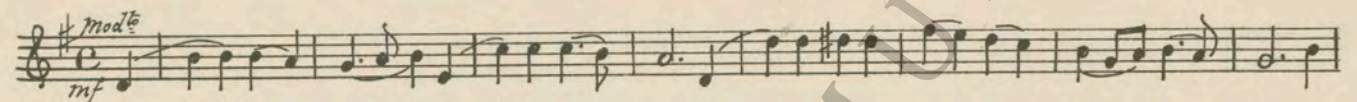
8 (Action) INDIAN CAPTURED Repeat No. 3 (BROWN) ¼ Min.



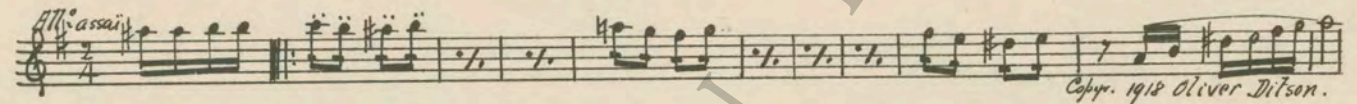
9 (Action) WAGON ON ROAD SHOWS Gaiety (Savino) 2¼ Min.



10 (Action) GIRL WALKS FROM SOLDIERS AT WAGON. When You Are Truly Mine (Lee) (WHITE) 2¼ Min.



11 (Title) THE SYMPATHIZERS OF Furioso (Langey) 1½ Min.



12 (Action) INDIANS SURROUND MEN ON HORSEBACK Under Love's Window (Lincke) ¼ Min.



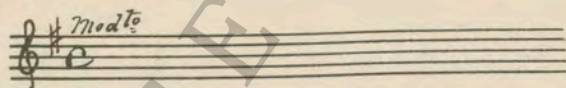
13 (Title) IRON EYES Scalp Dance (Lake) ¼ Min.



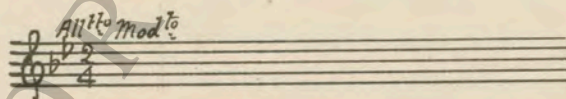
14 (Action) FLASH TO ROOM AFTER INDIANS BEGIN TO DANCE Sunshine and Flowers (Schoenfeld) 2¼ Min.



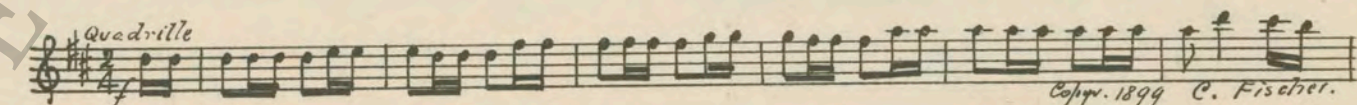
15 (Action) GIRL PUTS HANDS TO HER EARS Repeat No. 10 (WHITE) 1½ Min.



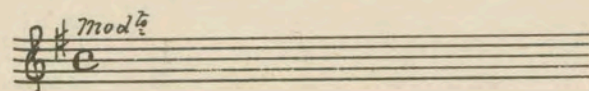
16 (Action) FADE AFTER TITLE: "I THINK HE IS TERRIBLE" Repeat No. 2 (LIGHT BLUE) ¼ Min.



17 (Action) DANCING FEET SHOW Criterion Quadrille (Schlepegrell) 2¼ Min.



18 (Action) LIEUTENANT DANCES GIRL OUT OF ROOM Repeat No. 10 (WHITE) 2¼ Min.



19 (Action) LIEUTENANT GRABS GIRL Film Theme No. 39 (Lake) 1 1/8 Min.

Musical notation for item 19, featuring a treble clef, key signature of one sharp (F#), and a 4/4 time signature. The tempo is marked 'mod.to'. The music includes various notes, rests, and dynamic markings like 'p' and 'pp'. Copyright notice: 'Copyright 1924 C. Fischer.'

20 (Title) YOU'RE TAKING A LONG CHANCE Repeat No. 10 (WHITE) 1 1/8 Min.

Musical notation for item 20, featuring a treble clef, key signature of one sharp (F#), and a common time signature (C). The tempo is marked 'mod.to'.

21 (Action) FADE-OUT OF GIRL AFTER LIEUTENANT RIDES BY Le Rouet d'Omphale (St. Saens) 1 1/8 Min.

Musical notation for item 21, featuring a treble clef, key signature of three sharps (F#, C#, G#), and a 2/4 time signature. The tempo is marked 'Pesante'. Copyright notice: 'Copyright 1920 Sonnemann Music.'

22 (Action) HORSEMAN SHOWS ON HILL Maestoso No. 17 (Lake) 1 1/8 Min.

Musical notation for item 22, featuring a treble clef, key signature of one sharp (F#), and a 4/4 time signature. The tempo is marked 'marcato'. Copyright notice: 'Copyright 1916 Carl Fischer.'

23 (Action) LETTER ON SCREEN Repeat No. 3 (BROWN) 3/2 Min.

Musical notation for item 23, featuring a treble clef, key signature of one sharp (F#), and a 4/4 time signature. The tempo is marked 'Maestoso'.

24 (Title) GO TO YOUR TROOP Fourteen Fathoms Deep (Lake) 1 1/8 Min.

Musical notation for item 24, featuring a treble clef, key signature of one sharp (F#), and a 4/4 time signature. The tempo is marked 'mod.to'. Copyright notice: 'Copyright C. Fischer.'

25 (Action) FADE AS INDIANS RIDE OFF Continue No. 24 "Fourteen Fathoms Deep" 1 1/8 Min.

Musical notation for item 25, featuring a treble clef, key signature of one sharp (F#), and a common time signature (C). The tempo is marked 'mod.to'.

26 (Action) LIEUTENANT COMES WALKING OUT OF HOUSE Repeat No. 10 (WHITE) 2/4 Min.

Musical notation for item 26, featuring a treble clef, key signature of one sharp (F#), and a common time signature (C). The tempo is marked 'mod.to'.

27 (Action) GIRL ENTERS HOUSE Serenade Romantique (Borch) 1 1/8 Min.

Musical notation for item 27, featuring a treble clef, key signature of one sharp (F#), and a 3/4 time signature. The tempo is marked 'And.to mosso'. Copyright notice: 'Copyright 1918 Belwin.'

28 (Action) SOLDIERS SHOW AFTER FADE-OUT OF GIRL CRYING Trumpet Call for one scene, then segue 2 1/2 Min.

Musical notation for item 28, featuring a treble clef and a common time signature (C).

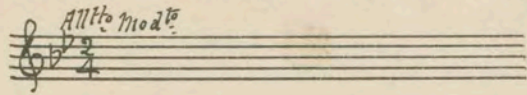
SEGUE Blas. Horse Troop (Sousa).

Musical notation for the segue, featuring a treble clef, key signature of one sharp (F#), and a 3/4 time signature. The tempo is marked 'marcia'. Copyright notice: 'Copyright 1925 Sam Fox.'

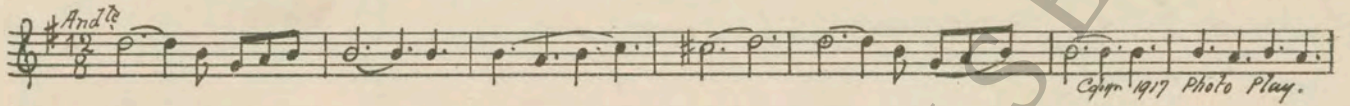
29 (Title) THE RED MAN TOO, HAS LOVED ONES Repeat No. 1 (ORANGE) 1 1/8 Min.

Musical notation for item 29, featuring a treble clef, key signature of one sharp (F#), and a 4/4 time signature. The tempo is marked 'And.to mod.to'.

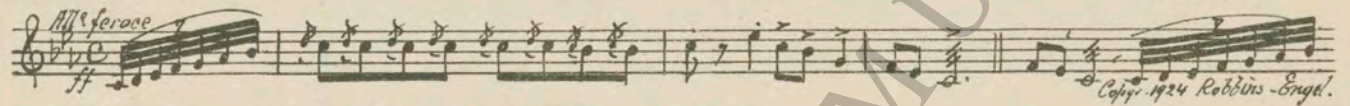
30 (Action) FADE-OUT OF INDIAN Repeat No. 2 (LIGHT BLUE) 1 1/8 Min.



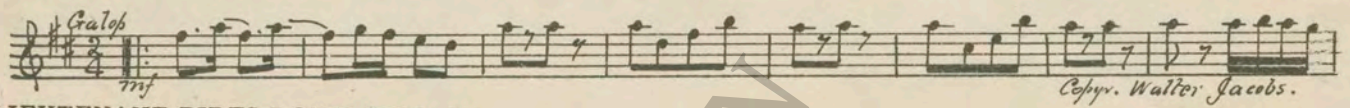
31 (Action) INTERIOR ROOM SCENE Poppy Love Theme (Luz) 3/4 Min.



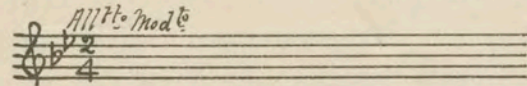
32 (Action) ARROW FLIES IN ROOM Indian Orgy (Rapee-Axt) 2 1/4 Min.



33 (Action) LIEUTENANT SWINGS ACROSS ON ROPE... Whip and Spur (Allen) 2 1/4 Min.



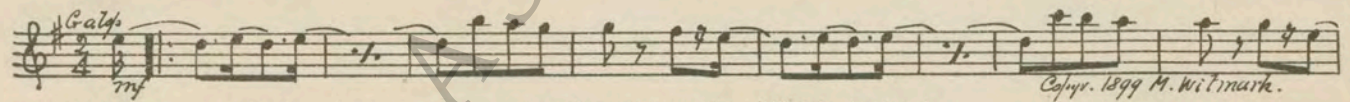
34 (Action) LIEUTENANT RIDES DOWN HILL ON HORSE Repeat No. 2 (LIGHT BLUE) 2 1/4 Min.



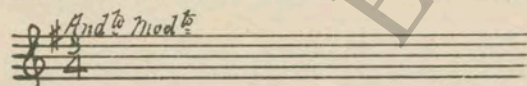
35 (Title) WELL IT LOOKS LIKE Hurry No. 3 (Zamecnik) 3 1/2 Min.



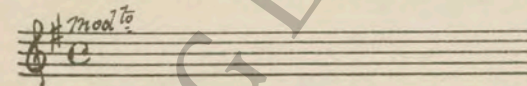
36 (Action) INDIAN DROPS SWORD Quick Action (Zimmerman) 1 1/2 Min.



37 (Action) PEOPLE SHOWN LYING ON FLOOR Repeat No. 1 (ORANGE) 1 1/8 Min.



38 (Action) GIRL TAKES HOLD OF LIEUTENANT'S HAND Repeat No. 10 (WHITE) 1 1/8 Min.



THE END

Proper rest period Nos. 21 to 29 inclusive.

IMPORTANT NOTE—The repetition of numbers in this cue sheet is simplified by the use of the "LUZ" SYMPHONIC COLOR GUIDE, sold by Music Buyers Corporation, 1520 Broadway, New York City. The color suggested for repetition of numbers designates the Mood or Emotion and is used as a code for such repetitions.

Country of Origin, U. S. A.

Orchestrations or single piano parts of each separate musical selection suggested hereon, can be purchased from CAMEO MUSIC SERVICE CORPORATION, 315-317 WEST 47TH STREET, NEW YORK CITY.