

280

Thematic Music Cue Sheet

M. J. MINTZ (PATENT) JULY 31, 1923.

CECIL B. DeMILLE presents

LEATRICE JOY in "THE WEDDING SONG"

An Alan Hale Production with

Robert Ames

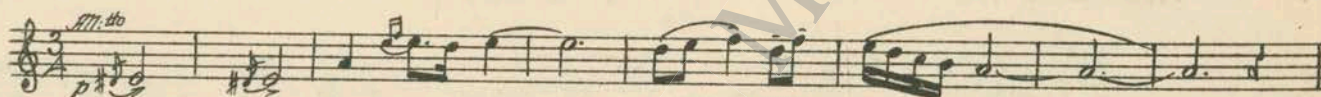
Adapted by Charles Whitaker and Douglas Doty From the novel by Ethel Watts Mumford

Music compiled by Rudolph Berliner

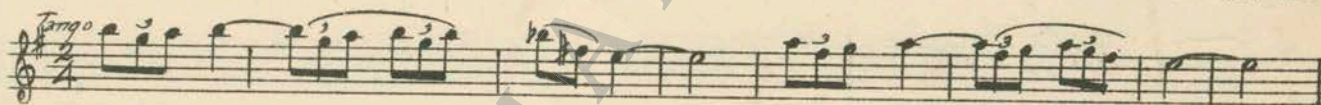
Released by

PRODUCERS DISTRIBUTING CORPORATION

1 AT SCREENING Serenade Espagnole (Bizet) 3/4 Min

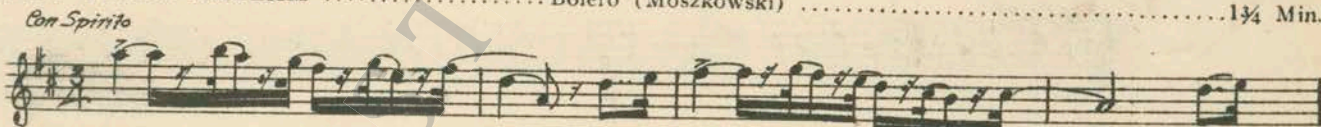


2 (Title) FAR OFF THE USUAL La Rosita (Dupont) 2 3/4 Min



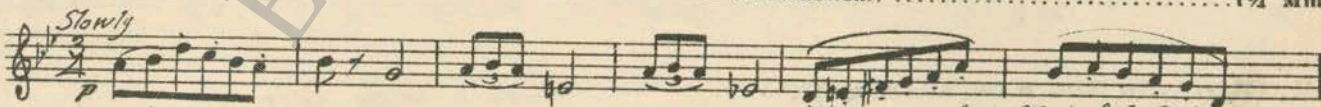
Copyr. 1922, by Sam Fox Pub. Co.

3 (Title) TODAY YOUNG HALLAM Bolero (Moszkowski) 1 3/4 Min



Copyr. 1910, by Carl Fischer.

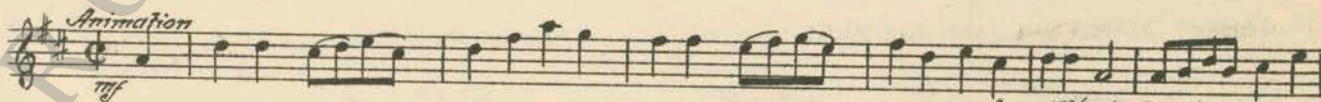
4 (Action) MUSICIANS IN DOORWAY Spanish Dances (Moszkowski) 1 1/4 Min



Copyr. 1919, by Carl Fischer.

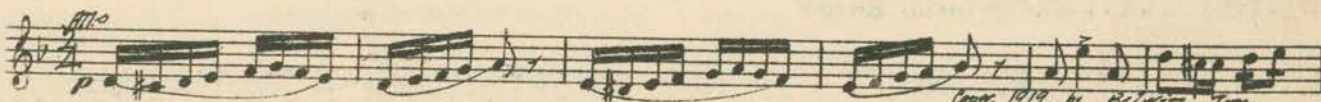
5 (Action) A SHIP IS SEEN Tympani Roll "P" 1/4 Min

6 (Action) MEN PLAYING CARDS Merry Cavaliers (Srawley) 1 1/4 Min



Copyr. 1924, by Geo. H. Sanders.

7 (Action) PAUL GRABS CARD PLAYER'S ARM Allegro Agitato (Kiefert) 3/4 Min



Copyr. 1919, by Belwin, Inc.

8 (Action) HALLAM OUTSIDE DOOR Pomponello (Golden) 2½ Min.

Musical notation for item 8, starting with *Mod. to grazioso* and *p*. Copyright: Forster Music Co.

9 (Title) BEATRICE IS PAUL GLYNN'S SISTER So That's the Kind of a Girl (Rose) 2¾ Min.

Musical notation for item 9, starting with *Mod. to*. Copyright: 1925, by Irving Berlin, Inc.

10 (Title) NOTE: Catch door bell ringing. BUT THE FAMILY IS Oh Boy, What a Girl (Green) 2¼ Min.

Musical notation for item 10, starting with *Mod. to* and *p*. Copyright: 1926, by Shapiro, Bernstein Co.

11 (Title) BROTHER HIM Big Boy (Ager) 1½ Min.

Musical notation for item 11, starting with *Mod. to*. Copyright: 1924, by Ager, Gellert & Bornstein.

12 (Action) WHEN DRESSED AS MINISTER—PUTS ON GLASSES Charley My Boy (Fiorito) 1 Min.

Musical notation for item 12, starting with *Fox trot*. Copyright: 1924, by Irving Berlin.

13 (Action) BEATRICE SEEN IN ROOM When a Blonde Makes Up Her Mind (Mills) 2½ Min.

Musical notation for item 13, starting with *Mod. to*. Copyright: 1925, by Jack Mills.

14 (Title) BUSY IF YOU KNOW Rhapsody Appassionato (Ketelby) 2¾ Min.

Musical notation for item 14, starting with *Mod. to*. Copyright: 1924, by Bosworth & Co.

15 (Title) IN THE NEW APARTMENT Steppin' in Society (Akst) 2 Min.

Musical notation for item 15, starting with *Fox trot*. Copyright: 1925, by Shapiro, Bernstein Co.

16 (Action) HAND SEEN—RINGS BELL Stepping Stones (Reeves) 2¼ Min.

Musical notation for item 16, starting with *Mod. to*. Copyright: 1915, by Hawkes & Son.

17 (Title) BEATRICE WOULD ENJOY Pearl of Madrid (Bachmann) 1½ Min.

Musical notation for item 17, starting with *pp*. Copyright: by Carl Fischer.

18 (Title) I THOUGHT THERE WERE Whispering Willows (Herbert) 1½ Min

Musical notation for "I THOUGHT THERE WERE" featuring a treble clef, a key signature of one flat, and a tempo marking of "Mod. ^{co}". The music begins with a piano (*p*) dynamic. Copyright information at the bottom right reads "Copp. 1915, by M. Witmark & Sons."

19 SORRY YOU CAN ONLY La Rosita (Dupont) ¾ Min.

Musical notation for "SORRY YOU CAN ONLY" featuring a treble clef, a key signature of one flat, and a tempo marking of "Tango". The music begins with a piano (*p*) dynamic. Copyright information at the bottom right reads "Copp. 1922, by Sam Fox Pub. Co."

20 (Title) IN SIX DAYS If Love Were All (Rapee-Axt) 2 Min

Musical notation for "IN SIX DAYS" featuring a treble clef, a key signature of one flat, and a tempo marking of "Valse lenta". The music begins with a piano (*p*) dynamic. Copyright information at the bottom right reads "Copp. 1922, by Robbins-Engel."

21 (Action) HALLAM JUMPS ON BED Oh Boy, What a Girl (Green) ¾ Min

Musical notation for "HALLAM JUMPS ON BED" featuring a treble clef, a key signature of one flat, and a tempo marking of "Mod. ^{co}". The music begins with a piano (*p*) dynamic. Copyright information at the bottom right reads "Copp. 1920, by Shapiro, Bernstein Co."

22 (Action) BEATRICE PLAYS PIANO Honest and Truly (Rose) 1½ Min.

Musical notation for "BEATRICE PLAYS PIANO" featuring a treble clef, a key signature of one flat, and a tempo marking of "Valse lenta". The music begins with a piano (*p*) dynamic. Copyright information at the bottom right reads "Copp. 1924, by Leo Feist, Inc."

23 (Title) NOTE: Catch action on piano. GOD DISPOSES Tout a Vous (Tyers) 2¾ Min

Musical notation for "GOD DISPOSES" featuring a treble clef, a key signature of one flat, and a tempo marking of "Valse". The music begins with a piano (*p*) dynamic. Copyright information at the bottom right reads "Copp. by Edw. B. Marks."

(Action) GIRL STARTS CHOKING MAN Appassionato (Borch) 1½ Min.

Musical notation for "GIRL STARTS CHOKING MAN" featuring a treble clef, a key signature of one flat, and a tempo marking of "Mod. ^{co}". The music begins with a piano (*p*) dynamic. Copyright information at the bottom right reads "Copp. 1920, by Oliver Ditson Comp."

25 (Title) I KNOW THIS BABY Thrills (Sanders) ¾ Min

Musical notation for "I KNOW THIS BABY" featuring a treble clef, a key signature of one flat, and a tempo marking of "Allegro". The music begins with a mezzo-forte (*mf*) dynamic. Copyright information at the bottom right reads "Copp. 1925, by Sanders & Co."

26 (Title) HOME SWEET HOME Red Rose (Hadley) 1 Min

Musical notation for "HOME SWEET HOME" featuring a treble clef, a key signature of one flat, and a tempo marking of "And. ^{mo}". The music begins with a piano (*p*) dynamic. Copyright information at the bottom right reads "Copp. 1920, by Carl Fischer."

27 (Action) BEATRICE CLOSSES DOOR—FAMILY IS SEEN And. Appassionato (Soro) 3¾ Min.

Musical notation for "BEATRICE CLOSSES DOOR—FAMILY IS SEEN" featuring a treble clef, a key signature of one flat, and a tempo marking of "And. ^{mo} Mod. ^{co}". The music begins with a piano (*p*) dynamic. Copyright information at the bottom right reads "Copp. 1924, by G. Schirmer."

28 (Action) BEATRICE ENTERS ROOM WHERE HALLAM IS

Must It Be Good-Bye (Meyer) 1/2 Min.
Mod.^{co}
Copr. 1924, by Hal Ross, Inc.

29 (Action) HALLAM TAKES HER IN HIS ARMS

Honest and Truly (Rose) 3/4 Min.
Valse lento
pp
Copr. 1924, by Leo Feist, Inc.

30 (Title) LET'S TELL THE FOLKS

One Fleeting Hour (Lee) 3/4 Min.
Mod.^{co}
Copr. 1915, by Sam Fox Pub. Co.

31 (Action) HALLAM STARTS SINGING WEDDING SONG

Spanish Dances (Moszkowski) 1/2 Min.
Sl. w/4
pp
Copr. 1919, by Carl Fischer.

NOTE: Stop with him. From beginning again at Direct Cue from Beatrice at piano.

32 (Action) BEATRICE LEAVES PIANO

Air de Ballet (Varley) 2 Min.
Mod.^{co}
Copr. 1921, by Belwin, Inc.

33 (Action) CLOSE-UP HALLAM & BEATRICE AFTER HALLAM GAVE HER PEARLS

Honest and Truly (Rose) 1 Min.
Valse lento
pp not fast
Copr. 1924, by Leo Feist, Inc.

34 (Action) FADE-IN OF SHACK

Beware (Bizet) 3 1/4 Min.
mf. to
not fast pp
Copr. 1921, by G. Rosey & Co.

35 (Title) VAIMCA AGAIN

La Rosita (Dupont) 2 Min.
Tango
Copr. 1922, by Sam Fox Pub. Co.

36 (Action) BEATRICE ENTERS BEDROOM

Marionettes (Byford) 1 Min.
Mod.^{co}
mf
Copr. 1921, by Basworth & Co.

37 (Title) WHILE THE UNSAVORY SUSIE

Beware (Bizet) 1/2 Min.
mf. to
pp not fast
Copr. 1921, by Geo Rosey

38 (Title) GRANDMA AND GLYNN Spanish Dances (Moszkowski) 1¼ Min.

Musical notation for 'Grandma and Glynn' in 2/4 time, marked *Molto* and *not fast*. The score consists of a single staff with a treble clef and a key signature of one flat. The music features a series of eighth and sixteenth notes with some rests. Copyright: 1919, by Carl Fischer.

39 (Action) INSERT-COMBINATION ON SAFE Lone Pine (Zamecnik) 1¼ Min

Musical notation for 'Insert-Combination on Safe' in 3/4 time, marked *Tranquillo*. The score consists of a single staff with a treble clef and a key signature of one flat. The music features a series of quarter and eighth notes. Copyright: 1922, by Sam Fox Pub. Co.

(Action) SHIP IS SEEN Beware (Bizet) ½ Min

Musical notation for 'Ship is Seen' in 3/4 time, marked *Mto, etc*. The score consists of a single staff with a treble clef and a key signature of one flat. The music features a series of eighth and sixteenth notes with some rests. Copyright: 1921, by Geo. Rose & Co.

(Action) BEATRICE SEATED IN BED Lamento (Gabriel-Marie) ½ Min.

Musical notation for 'Beatrice Seated in Bed' in 3/4 time, marked *Largo* and *p dolce*. The score consists of a single staff with a treble clef and a key signature of one flat. The music features a series of quarter and eighth notes with some rests. Copyright: 1909, by Ross J. J. J. J.

42 (Action) HALLAM & BEATRICE ENTER DOOR Devotion (Deppen) 2 Min.

Musical notation for 'Hallam & Beatrice Enter Door' in 3/4 time. The score consists of a single staff with a treble clef and a key signature of one flat. The music features a series of quarter and eighth notes with some rests. Copyright: 1919, by Sam Fox Pub. Co.

43 (Title) PARTNER YOU WEREN'T Atonement (Zamecnik) 1¼ Min.

Musical notation for 'Partner You Weren't' in 2/4 time, marked *And. te*. The score consists of a single staff with a treble clef and a key signature of one flat. The music features a series of eighth and sixteenth notes with some rests. Copyright: 1917, by Carl F.

44 (Action) SHIP IS SEEN Beware (Bizet) ¼ Min.

Musical notation for 'Ship is Seen' in 3/4 time, marked *Mto, etc* and *pp*. The score consists of a single staff with a treble clef and a key signature of one flat. The music features a series of eighth and sixteenth notes with some rests. Copyright: 1921, by Geo. Rose & Co.

45 (Title) HALLAM'S FAITH IN HER The Awakening (Zamecnik) 1½ Min.

Musical notation for 'Hallam's Faith in Her' in 3/4 time, marked *Opp. 222* and *mf*. The score consists of a single staff with a treble clef and a key signature of one flat. The music features a series of quarter and eighth notes with some rests. Copyright: 1926, by Sam Fox Pub. Co.

46 (Action) PAUL GRABS BEATRICE'S ARM Minor Agitato (Berge) ½ Min

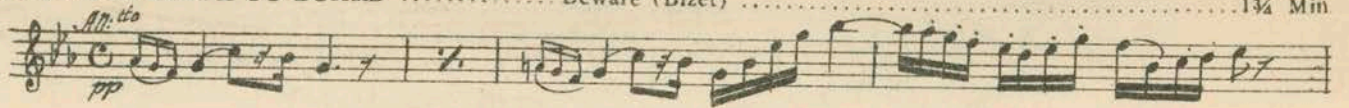
Musical notation for 'Paul Grabs Beatrice's Arm' in 2/4 time, marked *Mto Agitato*. The score consists of a single staff with a treble clef and a key signature of one flat. The music features a series of eighth and sixteenth notes with some rests. Copyright: 1925, by Robbins - Engel, Inc.

47 (Action) PAUL PUTS ARM ABOUT BEATRICE Promenade (Rapee) 1¼ Min.

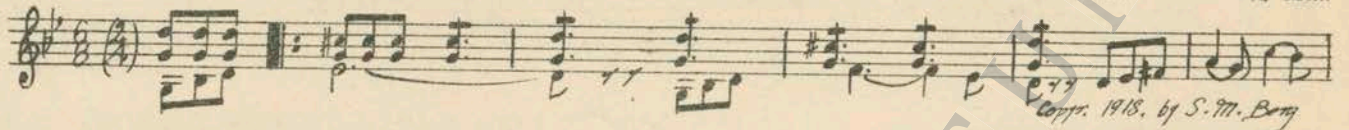
Musical notation for 'Paul Puts Arm about Beatrice' in 3/4 time, marked *Mto, etc*. The score consists of a single staff with a treble clef and a key signature of one flat. The music features a series of eighth and sixteenth notes with some rests. Copyright: 1923, by Robbins - Engel, Inc.

48 (Title) WITH A TROPICAL STORM Tympani Roll ¼ Min

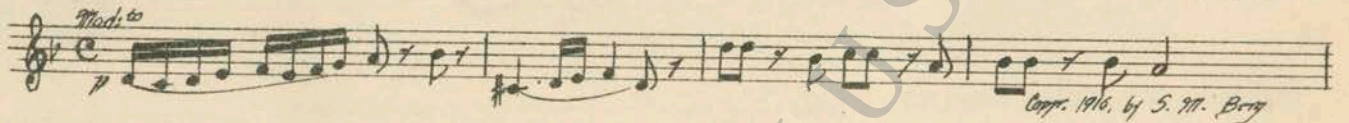
49 (Title) HALLAM IS QUICK TO BOARD Beware (Bizet) 1 3/4 Min.



50 (Action) HALLAM KNOCKS MAN DOWN Turbulence (Borch) 1 3/4 Min.



51 (Action) MAN SINKS TO KNEES Silence 1/8 Min.
 52 (Action) CLOUDS Tympani Roll 1/8 Min.
 53 (Action) BEATRICE SEEN WRITING Misterioso (Minot) 1 Min.



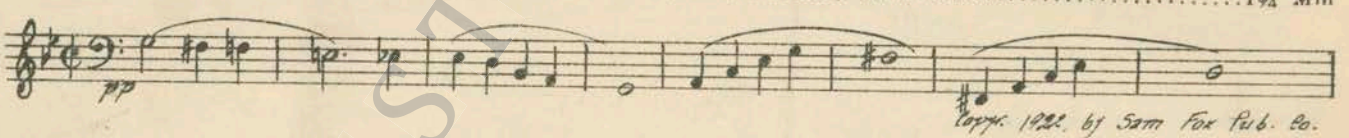
54 (Action) BEATRICE JUMPS UP FROM SAFE Thrills (Sanders) 2 1/4 Min.



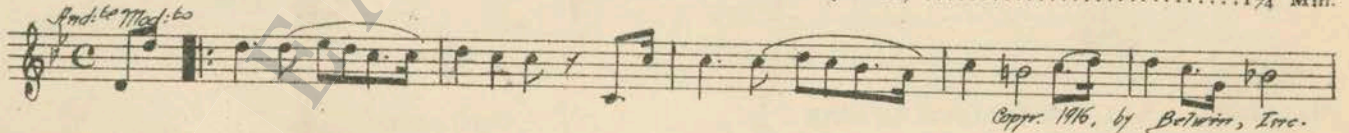
55 (Action) PAUL OPENS SAFE Chanson Melancholique (Collinge) 1/2 Min.



56 (Action) HALLAM ENTERS ROOM The Tempest (Zamecnik) 1 3/4 Min.



57 (Action) HALLAM SITS DOWN ALONE And, Pathetique No. 23 (Borch) 1 1/4 Min.

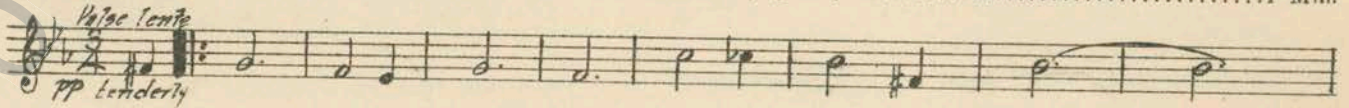


58 (Action) INSERT OF BOMB A. B. C. Dram. Set No. 13-A1 (Luz) 3 Min.



59 (Action) AT EXPLOSION OF BOMB NOTE: Play to action. Catch explosion. Stop Music 1/4 Min.

60 (Action) BEATRICE SEEN ON STEPS NOTE: Tympani roll for fall of cliff. Honest and Truly (Rose) 1 Min.



Country of Origin, U. S. A.

THE END

Complete Orchestrations and single parts of all compositions contained herein can be purchased from CAMEL MUSIC SERVICE CORPORATION, 112-118 West 44th Street, New York City