

258

INSPIRATION PICTURES, INC.

Chas. H. Duell, Jr., Pres.

presents

LILLIAN GISH

in

The Henry King Production

THE WHITE SISTER

From the novel by F. Marion Crawford

METRO PICTURES CORPORATION, DISTRIBUTORS

Length of Film 11 Reels (10,440 feet)



- 1 (AT SCREENING)At Twilight (Golden)2½ Min.

Mod.^{to} cantabile

Copyr. 1915, by Metro Play Music

- 2 (Title) ITALYIncid. Symp. No. 15 (Thomas)1 Min

And.^{to}

Copyr. 1923, by Metro Play Music

- 3 (Action) PALACE EXTERIOR SCENEAdagio Pathetique (Godard)1½ Min.

Adagio

- 4 (Action) END OF MAN'S PRAYERAubade (Lalo)4 Min.

And.^{to}

Copyr. 1921, by G. Schirmer

- 5 (Action) CARRIAGE LEAVES PALACE.....Repeat No. 1, "At Twilight"1 Min.

Mod.^{to} cantabile

- 6 (Action) LOVERS DISTURBED WHEN MAN SLAMMING DOORAngel's Serenade (Braga)4 Min.

And.^{to} con moto

Copyr. 1900, by Carl Fischer

- 7 (Title) RIDING TO HOUNDSAllegro Vivace (Langey)2½ Min.

All.^o mod.^{to}

Copyr. 916, by G. Schirmer

- 8 (Title) ANGELA MYSTERIOUSLY LEADSChiribiribi (Pestalozza)¼ Min.

Piace cantabile

Copyr. 1909, by Carl Fischer

- 9 (Action) END OF DANCE—MUSICIANS STOP PLAYINGMargarita "From Italy" (Langey)1 Min.

All.^o gra

Copyr. 1911, by G. Schirmer

- 10 (Action) END OF BOY'S SONGRepeat No. 7, "Allegro Vivace"¼ Min.

All.^o mod.^{to}

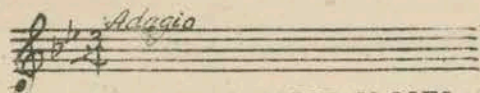
- 11 (Action) FLASH-BACK TO LOVERSO Solo Mio (Curtis)1 Min.

And.^{to}

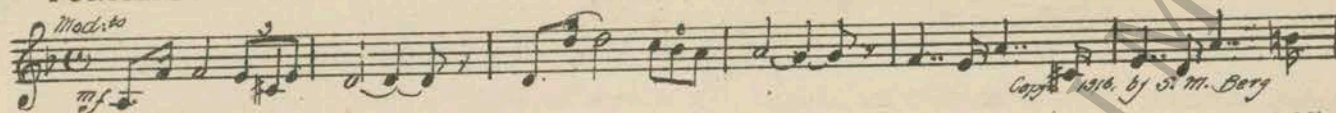
- 12 (Action) LOVERS WITH BACKS TO CAMERA AT LAKERepeat No. 7, "Allegro Vivace"1 Min.

And.^{to} mod.^{to}

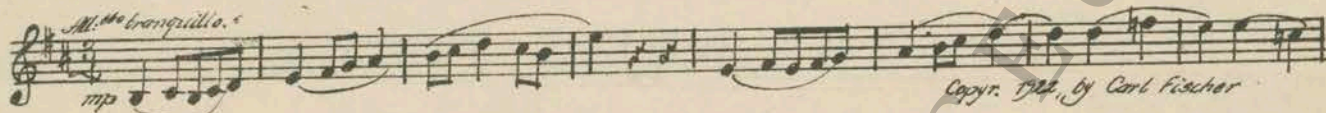
13 (Action) ACCIDENT Repeat No. 3, "Adagio Pathetique (Godard) 4 Min.



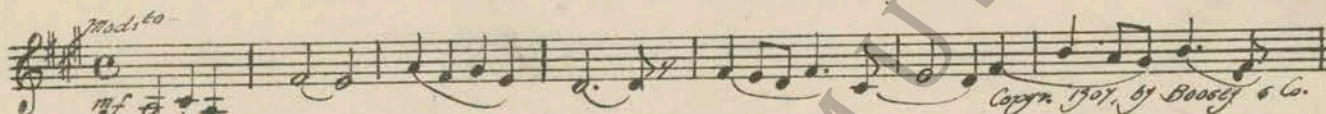
14 (Action) WOMAN IN RIDING HABIT CLOSSES PORTIERS Dram. Andante No. 32 (Berge) 1½ Min.



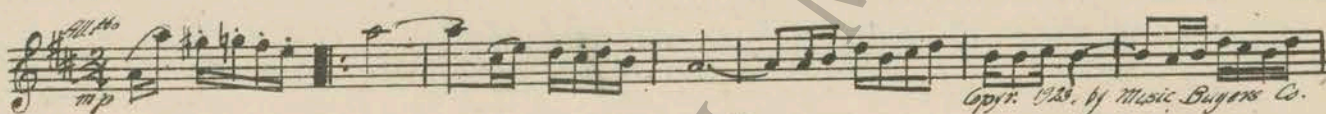
15 (Action) WOMAN IN RIDING HABIT BURNS PAPERS. Novelette (Glazounow) 8 Min



SEGUE: Pensee D'Amour (Bucalossi)

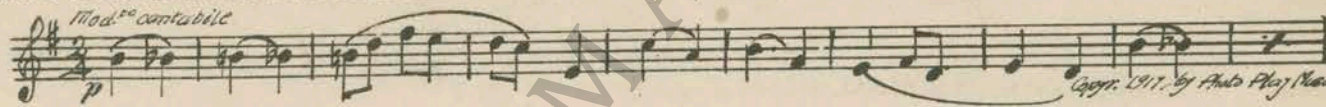


16 (Title) IN A SECTION OF THE CITY Bridal Paths (Langford) 1 Min

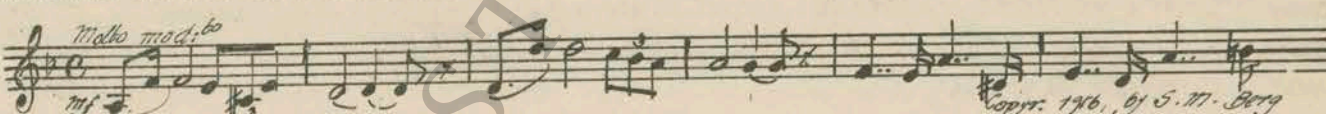


17 (Action) MAN'S HAND KNOCKS ON DOOR Repeat No. 1, "At Twilight" and Segue: Repeat No. 11, "O Solo Mio" 5 Min

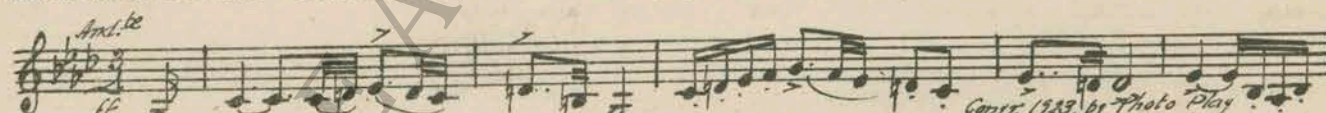
18 (Title) DAWN AND EACH PRECIOUS MOMENT At Twilight (Golden) 1 Min.



19 (Action) CARRIAGE ON SCREEN Dram. Andante No. 32 (Berge) 2½ Min.



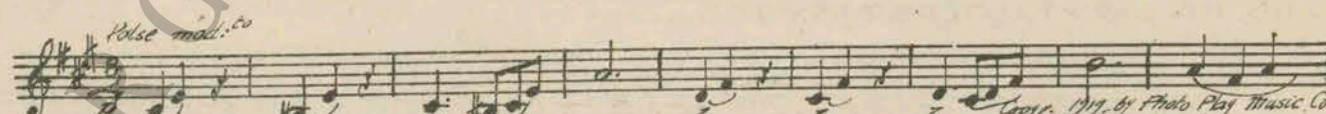
20 (Title) PROFESSOR SEVERI Incid. Symp. No. 15 (Thomas) 1 Min



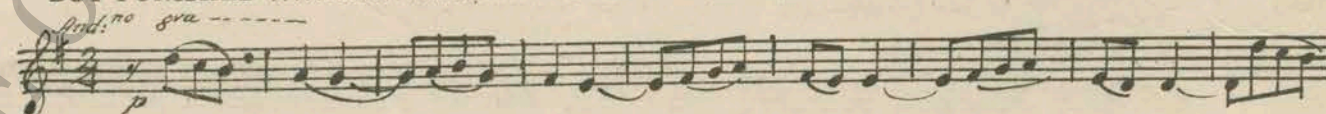
21 (Title) PEACEFULLY SLEEPING Italians in Algiers (Rossini) 1 Min



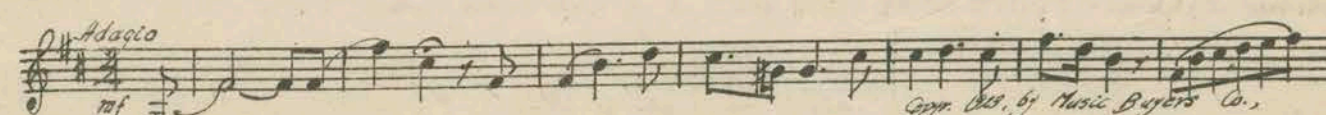
22 (Title) AND ANGELA EVER DREAMING In Flowerland (Golden) 3½ Min.



23 (Action) LILLIAN GISH AT WINDOW AFTER BOY PUNISHED O Solo Mio (Curtis) ¼ Min

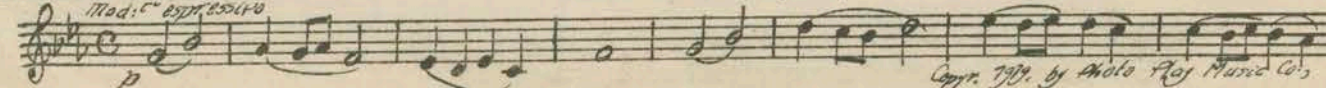


24 (Action) PRIEST ENTERS SCHOOL ROOM Repentance (Kempinski) 2½ Min

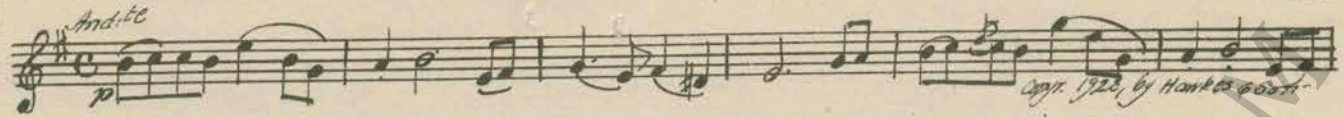


25 (Action) LILLIAN GISH FAINTS NO MUSIC—DEAD SILENCE.

26 (Title) THE HOSPITAL AT Scented Violets (Reynard) 4 Min

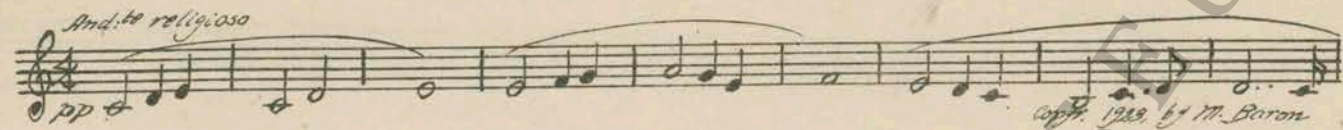


27 (Title) MEANWHILE THE TREMENDOUS Pathetic Story (Borch) 1 Min.



28 (Action) LILLIAN GISH GETS OUT OF BED..... Repeat No. 18, "At Twilight" 1 Min.

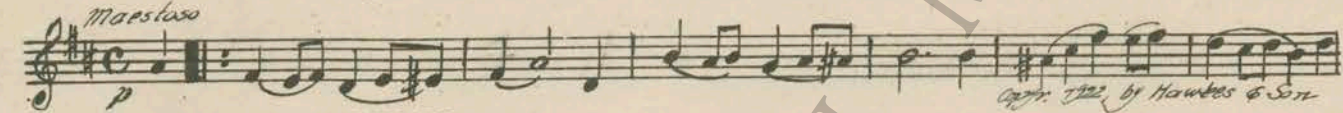
29 (Title) THE FLOOD OF TEARS..... A Cloister Episode (Baron) 1 Min.



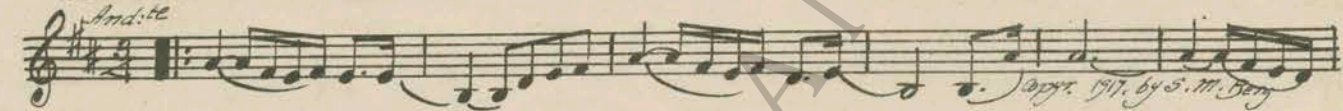
30 (Title) TWO YEARS OF DILIGENT Oriental Dance (Lubomirsky)..... 1/4 Min.



31 (Title) MEANWHILE ANGELA SERVED Immortal Choir (Lotter) 1 Min.



32 (Action) LILLIAN GISH AS NUN WALKS TO WINDOW Rest (Borch) 1 Min.



33 (Title) BEFORE TAKING HER FINAL VOWS..... Repeat No. 31, "Immortal Choir" 1 Min.

34 (Action) LONG SHOT OF CONVENT GARDENS Repeat No. 32, "Rest" 1 Min.

35 (Title) WHILE GIOVANNI STRUGGLED Repeat No. 31, "Immortal Choir" 1 Min.

36 (Title) AT THE END OF THE DESERT TRAIL..... Repeat No. 32, "Rest" 1/4 Min.

37 (Title) CLOTHED IN BRIDAL..... Repeat No. 31, "Immortal Choir" 2 1/2 Min.

38 (Title) WEDDING BELLS Church Bells by Organ or Drummer.

39 (Action) ONE SCENE Ave Maria (Gounod) 6 1/2 Min.



SEGUE: Adagio Pathetique (Godard).



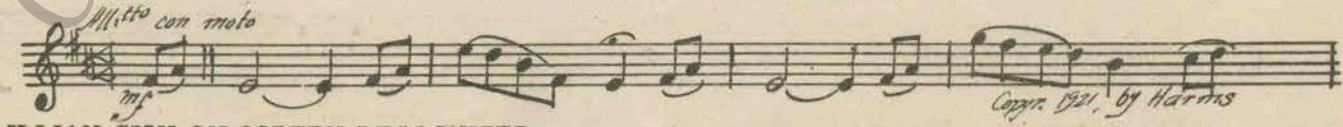
40 (Action) SECOND TIME BATTLESHIP ON SCREEN..... Hurry No. 1 (Zamecnik) 4 Min.



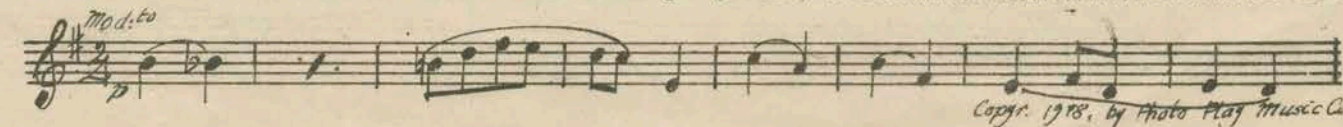
41 (Title) I CAME TO MAKE MY USUAL..... Dram. Andante No. 32 (Berge) 1 Min.



42 (Action) CARRIAGE DRIVES AWAY FROM BEGGAR.. Serenade Eternal (Schroeder) 1 Min.



43 (Action) LILLIAN GISH ON SCREEN RECOGNIZED BY SEVERI At Twilight (Golden) 1 Min.



44 (Action) PRIEST ON SCREEN Timpany Roll only—No music ¼ Min.

45 (Action) LILLIAN GISH OFF SCREEN Pathetic Suite (Luz) 6 Min.

46 (Title) FOLLOWING A LULL Incid. Symph. No. 15 (Thomas) 2½ Min.

47 (Action) SEVERI LOCKS DOOR Guesome Tale (Zamecnik) 4 Min.

48 (Title) DO YOU THINK IT COSTS ME Repeat No. 41, "Dram. Andante No. 32" 1½ Min.

49 (Title) I CAME ONLY TO WARN YOU Incid. Symph. No. 8 (Kempinski) 1 Min.

50 (Action) PRIEST ON IN STREET SCENE Andante Religioso (Gotterman) 4 Min.

51 (Action) LILLIAN GISH LEAVING OBSERVATORY Set No. 9—A 1 (Luz) 1 Min.

52 (Action) CARRIAGE FALLS OVER BANK Set No. 9—C 3 (Luz) ¼ Min.

53 (Action) LILLIAN GISH AND PRIEST ON SCREEN Finale from Symp. in F Minor (Tschaikowsky) 6½ Min.

54 (Action) CLOSE-UP OF LILLIAN GISH AT ALTAR Repeat No. 52, "Set No. 9—C 3" 1½ Min.

55 (Action) LILLIAN GISH RESTS SISTER'S HEAD IN LAP Incid. Symp. No. 3 (Kempinski) 2½ Min.

56 (Action) SEVERI LYING IN WATER Adagio Pathetique (Godard) 2½ Min.

57 (Title) DAWN FOUND VESUVIUS Reve Angelique (Rubinstein) 2½ Min.

Made in U. S. A.

THE END

Complete Orchestrations and single parts of all compositions contained herein can be purchased from
CAMEO MUSIC PUBLISHING CO., INC., 112-118 West 44th Street, New York City