

M. J. MINTZ (PATENT)
JULY 31, 1923.

Joseph M. Schenck
presents
NORMA TALMADGE
in
HENRY KING'S
Production
"THE WOMAN DISPUTED"
with
GILBERT ROLAND
Compiled by Ernst Luz
United Artists Picture

Length of film 9 reels (9020) feet Maximum projection time 1 hour, 40 minutes

- 1 AT SCREENING Woman Disputed (Grossman) (WHITE) 1 Min.

T

Walse
COPYR. H. WITMARK & SONS

- 2 (Title) NOTE: Play introduction and chorus. DEEP IN THE SHADOWY SECTION Fugitive (Maiorana) (LT. BLUE) (Shots) 1 Min.

2

speedily
mf
COPYR. 1926 G. SCHIRMER

- 3 (Action) GIRL'S LEGS SEEN ON SCREEN Serenade Passionnee (Heymann) 1½ Min.

And
mf
COPYR. EDW. B. MARKS

- 4 (Action) NORMA TALMADGE LETS BOYS OUT OF BARREL The Hermit's Dream (Marquardt) ¾ Min.

And
pp
COPYR. 1928 MUSIC BUYERS CORP.

- 5 (Action) BUSINESS CARD ON SCREEN Repeat No. 2 (LT. BLUE) ½ Min.

3

speedily
mf

- 6 (Action) STOP WITH SHOT Grief (Zamecnik) 2 Min.

And^{te}
p
COPYR. 1922 SAM FOX

- 7 (Title) WHAT A PLACE TO KICK OFF IN Repeat No. 2 (LT. BLUE) 1 Min.

2

speedily
mf

- 8 (Action) CLOSE-UP AS NORMA TALMADGE STOPS PLEADING Lament (Herrmann) 2 Min.

And^{te}
p
COPYR. 1926 HEINRICHSHOFEN

The Police will decide that

9 (Title) THE POLICE WILL DECIDE THAT Symphonic Incidentals No. 17 (Marquardt) 2¼ Min. ✓

4

Musical notation for item 9: Treble clef, 2/4 time, *And.* *pp*. Copyright 1928 MUSIC BUYERS.

10 (Title) SHE MET US DOWN STAIRS Repeat No. 8 "Lament" 2¼ Min.

Musical notation for item 10: Treble clef, 2/4 time, *And.* *pp*.

11 (Action) FADE-OUT AFTER TITLE: "SHE CAN STAY AT MY HOUSE" Woman Disputed (Grossman) (WHITE) ¾ Min.

T

Musical notation for item 11: Treble clef, 2/4 time, *And.* *pp*.

Musical notation for item 11 (continued): Treble clef, 2/4 time, *And.* *pp*.

Musical notation for item 11 (continued): Treble clef, 2/4 time, *And.* *pp*. Copyright M. WITMARK & SONS.

12 (Action) CHURCH BELLS ON SCREEN War March of the Priests (Mendelssohn) ½ Min.

Musical notation for item 12: Treble clef, 2/4 time, *Allo. Vivace* *ff*. Copyright 1919 CARL FISCHER.

13 (Action) TWO MEN SEEN ON SCREEN Sunshine and Flowers (Schoenfeld) 1½ Min.

Musical notation for item 13: Treble clef, 3/4 time, *Vivo* *ff*. Copyright 1921 PHOTOPLAY MUSIC CO.

14 (Title) NOTE: Play introduction and Waltz. YOU MEAN WHAT WILL YOU DO Yearning (Schoenfeld) (GRAY) 1¾ Min.

2

Musical notation for item 14: Treble clef, 3/4 time, *And. Mod.* *mf*. Copyright 1925 PHOTOPLAY MUSIC CO.

15 (Title) GOODBYE Repeat No. 13 "Sunshine and Flowers" 1 Min.

Musical notation for item 15: Treble clef, 3/4 time, *Vivo* *ff*. Handwritten: *Pierrot and Pierrette*.

16 (Action) PARTY SEATED AT BREAKFAST TABLE Repeat No. 14 (GRAY) ¾ Min.

2

Musical notation for item 16: Treble clef, 3/4 time, *And. Mod.* *mf*.

17 (Action) TELEGRAM ON SCREEN Sunshine and Flowers (Schoenfeld) 2¼ Min.

Musical notation for item 17: Treble clef, 3/4 time, *Vivo* *ff*. Copyright 1921 PHOTOPLAY MUSIC CO.

18 (Action) LETTER HANDED TO NORMA TALMADGE..The Coquette (Denben) 1½ Min.

Musical notation for item 18, featuring a treble clef, key signature of one sharp (F#), and a 6/8 time signature. The tempo is marked *mod.to* and the dynamics *mf*. The piece concludes with a fermata. Copyright notice: *COPYR. 1921 SAM. FOX*

19 (Title) YOU EAT FISH Mountain Trails (Schoenfeld) 1 Min.

Musical notation for item 19, featuring a treble clef, key signature of one sharp (F#), and a 2/4 time signature. The tempo is marked *mod.to*. Copyright notice: *COPYR. 1925 PHOTOPLAY MUSIC CO*

20 (Title) I SUPPOSE SOME DAY Yearning (Schoenfeld) (GRAY) 2 Min.

2

Musical notation for item 20, featuring a treble clef, key signature of one sharp (F#), and a common time signature. The tempo is marked *And. Mod.* and the dynamics *mf*. Copyright notice: *COPYR. 1925 PHOTOPLAY MUSIC CO*

21 (Action) NOTE: Watch cuckoo clock. INTERRUPT WITH DOORBELL RINGING.....Symphonic Incidentals No. 3 (Marquardt) (RED) (Telephone bell) 1 Min.

1

Musical notation for item 21, featuring a treble clef, key signature of one sharp (F#), and a common time signature. The tempo is marked *Allegretto* and the dynamics *mf*. Copyright notice: *COPYR. 1927 MUSIC BUYERS CORP*

22 (Action) AFTER READING LETTER, MAN SITS DOWN ON BED Woman Disputed (Grossman) (WHITE) 1½ Min.

T

Musical notation for item 22, featuring a treble clef, key signature of one sharp (F#), and a 3/4 time signature. The tempo is marked *Valse* and the dynamics *p*.

Musical notation for item 22, featuring a treble clef, key signature of one sharp (F#), and a 3/4 time signature. The dynamics are *p*.

Musical notation for item 22, featuring a treble clef, key signature of one sharp (F#), and a 3/4 time signature. The dynamics are *p*. Copyright notice: *COPYR. M. WITMARK & SONS*

23 (Action) NORMA TALMADGE LEAVES TELEPHONE.. Repeat No. 21 (RED) (Telephone bell) 1½ Min.

~~1~~

Musical notation for item 23, featuring a treble clef, key signature of one sharp (F#), and a common time signature. The tempo is marked *Allegretto* and the dynamics *mf*.

24 (Action) CLOCK ON SCREEN Woman Disputed (Grossman) (WHITE) 3 Min.

T

Musical notation for item 24, featuring a treble clef, key signature of one sharp (F#), and a 3/4 time signature. The tempo is marked *Valse* and the dynamics *p*. Copyright notice: *COPYR. M. WITMARK & SONS*

25 (Action) MAN RINGING DOORBELL Sincerity (Byford) 1 Min.

Musical notation for item 25, featuring a treble clef, key signature of one sharp (F#), and a 4/4 time signature. The tempo is marked *And. Mod.* and the dynamics *mf*. Copyright notice: *COPYR. 1927 BOSWORTH & CO*

26 (Action) MAN SEES NORMA TALMADGE IN DOOR..... Repeat No. 22 (WHITE) 1½ Min.

T

Musical notation for item 26, featuring a treble clef, key signature of one sharp (F#), and a 3/4 time signature. The tempo is marked *Valse* and the dynamics *p*.

"The Woman Disputed"

Why Niki

27 (Title) WHY NIKI 39 Symphonic Incidentals No. 3 (Marquardt) (RED) 1 Min. ✓

Larghetto
Musical notation for 'Why Niki' in G major, 3/4 time, starting with a treble clef and a key signature of one sharp. The tempo is marked 'Larghetto'. The score includes a circled '3' above the first measure and a circled '4' below the first measure. Copyright: 1927 MUSIC BUYERS CORP.

28 (Title) AND THIS IS YOUR GRATITUDE Emotional Agitato (Drigo's Cinema Classics) 1 Min.

Allo Agitato
Musical notation for 'And This is your Gratitude' in G major, 2/4 time, starting with a treble clef and a key signature of one sharp. The tempo is marked 'Allo Agitato'. Copyright: 1926 CARL FISCHER.

29 (Action) NIKI WALKS FROM ROOM AFTER TITLE: "THIS IS YOUR HOUR" Woman Disputed (Grossman) (WHITE) (Church bells) 1 1/2 Min.

Valse
Musical notation for 'Niki walks from room after title' in G major, 3/4 time, starting with a treble clef and a key signature of one sharp. The tempo is marked 'Valse'. Copyright: M. WITMARK & SONS.

Musical notation for 'Niki walks from room after title' in G major, 3/4 time, starting with a treble clef and a key signature of one sharp. Copyright: M. WITMARK & SONS.

Musical notation for 'Niki walks from room after title' in G major, 3/4 time, starting with a treble clef and a key signature of one sharp. Copyright: M. WITMARK & SONS.

30 (Title) THROUGH THE CRACKLING FLAMES Mysterious March (Borch) 1 1/4 Min.

Marcia
Musical notation for 'Through the crackling flames' in G major, 2/4 time, starting with a treble clef and a key signature of one sharp. The tempo is marked 'Marcia'. Copyright: 1922 HAWKES & SON.

31 (Action) FLASH FROM HAY WAGON TO CANNON Agitato (Riesefeld) 1 3/4 Min.

Agitato
Musical notation for 'Flash from hay wagon to cannon' in G major, 2/4 time, starting with a treble clef and a key signature of one sharp. The tempo is marked 'Agitato'. Copyright: 1918 G. SCHIRMER.

32 (Action) FADE-OUT AFTER TITLE: "AND I'LL GET LIEBERT" Repeat No. 29 (WHITE) 1 Min.

Valse
Musical notation for 'Fade-out after title' in G major, 3/4 time, starting with a treble clef and a key signature of one sharp. The tempo is marked 'Valse'. Copyright: M. WITMARK & SONS.

33 (Action) NORMA TALMADGE WALKS FROM WALL AFTER READING LETTER Battle Music (Riesefeld) 2 1/2 Min.

Agitato
Musical notation for 'Norma Talmadge walks from wall' in G major, 2/4 time, starting with a treble clef and a key signature of one sharp. The tempo is marked 'Agitato'. Copyright: 1918 G. SCHIRMER.

34 (Action) AFTER BATTLE AUTO ON SCREEN March of the Giants (Cowen) 1 Min.

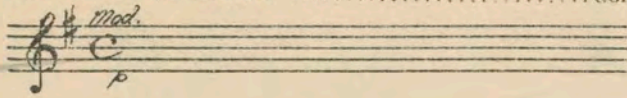
mod. con moto
Musical notation for 'After battle auto on screen' in G major, 2/4 time, starting with a treble clef and a key signature of one sharp. The tempo is marked 'mod. con moto'. Copyright: 1926 G. SCHIRMER.

35 (Action) DOOR OPENED—PRIEST SEEN *Romance* Symphonic Incidentals No. 7 (Marquardt) 1/2 Min.

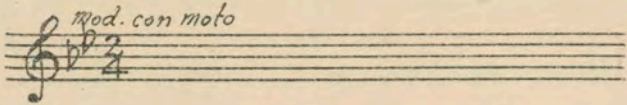
mod.
Musical notation for 'Door opened—priest seen' in G major, 3/4 time, starting with a treble clef and a key signature of one sharp. The tempo is marked 'mod.'. Copyright: 1927 MUSIC BUYERS CORP.

"The Women Disputed"

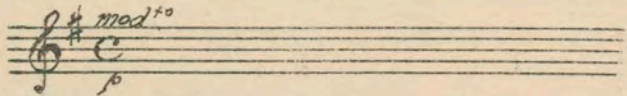
36 (Title) THE RUSSIAN ARMY Continue No. 35 1 1/4 Min.



37 (Action) POSTER SEEN—"WARNING" Repeat No. 34 "March of the Giants" 1 Min.



38 (Action) STOP WITH VOLLEY OF SHOTS Repeat No. 35 "Symphonic Incidentals No. 7" 1 1/2 Min.



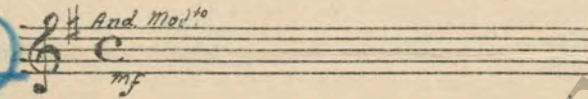
39 (Action) STOP WITH VOLLEY OF SHOTS Yearning (Schoenfeld) (GRAY) 1 Min.



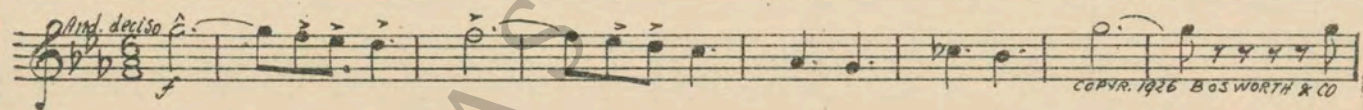
40 (Title) TAKE THE OTHERS OUTSIDE Symphonic Incidentals No. 7 (Marquardt) 3/4 Min.



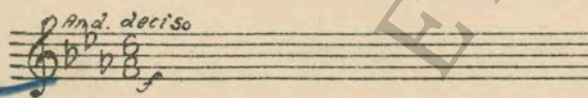
41 (Title) NIKI, IT'S CRUEL Repeat No. 39 (GRAY) 1 1/4 Min.



42 (Title) WHAT ARE YOU GOING TO DO A Passionate Episode (Engleman) (DK. BLUE) 1 1/2 Min.



43 (Title) FILTHY BEAST, I HATE HIM Continue No. 42 2 Min.



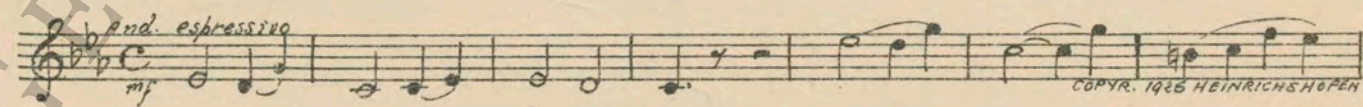
44 (Title) PAUL MY BELOVED Despair (Kalbe) 2 1/2 Min.



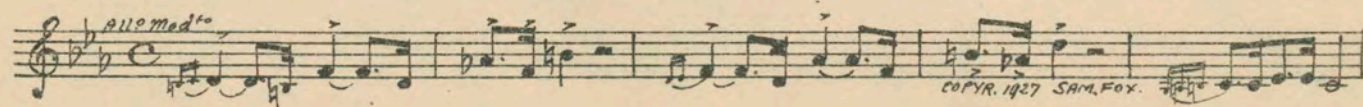
45 (Title) AND THIS IS THE DECENT WOMAN Repeat No. 42 (DK. BLUE) 1 Min.



46 (Action) NORMA TALMADGE'S HEAD ON SUPPOSED PRIEST'S SHOULDER Forsaken (Scholz) 2 1/4 Min.



47 (Title) I AM NOT A PRIEST Treacherous Knave (Zamecnik) 1 1/2 Min.



"For your Country"

48 (Title) FOR YOUR COUNTRY Sanctuary of the Heart (Ketelbey) (PURPLE) 2½ Min.

Musical notation for item 48, featuring a treble clef, 4/4 time signature, and tempo marking *And.^{te} Sost.*. Copyright notice: COPYR. 1924 BOSWORTH.

49 (Title) YOU ARE ALL FREE TO GO Agitated Misterioso (Rapee) 1 Min.

Musical notation for item 49, featuring a treble clef, 3/4 time signature, and tempo marking *Agitated Misterioso*. Copyright notice: COPYR. 1925 BELWIN.

50 (Title) LIEBERT IS HERE Incid. Symphony No. 17 (Schertzinget) 1 Min.

Musical notation for item 50, featuring a treble clef, common time signature, and tempo marking *All.^o Mod.*. Copyright notice: COPYR. 1924 PHOTO PLAY MUSIC CO.

51 (Action) SOLDIERS ENTER CHURCH Woman Disputed (Grossman) (WHITE) 1¼ Min.

Musical notation for item 51, featuring a treble clef, 3/4 time signature, and tempo marking *Walse*. Copyright notice: COPYR. M. WITMARK & SONS.

52 (Action) LOVERS KNEEL AT ALTAR Repeat No. 48 (PURPLE) 1 Min.

Musical notation for item 52, featuring a treble clef, 4/4 time signature, and tempo marking *And. Sost.*. Includes a circled number '5' in blue.

53 (Title) HELP ME SOMEBODY Symphonic Incidentals No. 3 (Marquardt) (RED) 1¼ Min.

Musical notation for item 53, featuring a treble clef, common time signature, and tempo marking *Carretto*. Copyright notice: COPYR. 1927 MUSIC BUYERS CORP.

54 (Title) YOU'VE HAD YOUR HOUR Facing Death (Bece) 1¼ Min.

Musical notation for item 54, featuring a treble clef, common time signature, and tempo marking *And.^{te}*. Copyright notice: COPYR. 1925 BELWIN.

55 (Action) NIKI FALLS TO FLOOR Passing of Summer (Parker) 2½ Min.

Musical notation for item 55, featuring a treble clef, common time signature, and tempo marking *med.^{to}*. Copyright notice: COPYR. 1923 PHOTOPLAY MUSIC.

56 (Action) NORMA TALMADGE RUNS OUT OF CHURCH. Marche Triumphale (Kempinski) 1¾ Min.

Musical notation for item 56, featuring a treble clef, common time signature, and tempo marking *maestoso*. Copyright notice: COPYR. 1919 PHOTOPLAY MUSIC CO.

57 (Title) BUT THERE IS ONE Sanctuary of the Heart (Ketelbey) (PURPLE) (Church bells) 1¾ Min.

Musical notation for item 57, featuring a treble clef, 4/4 time signature, and tempo marking *And. Sost.*. Copyright notice: COPYR. 1924 BOSWORTH.

THE END

NOTE: Proper orchestral rest period is Nos. 12 to 20 inclusive. The repetition of numbers in this cue sheet is simplified by the use of the "LUZ" SYMPHONIC COLOR GUIDE, sold by Music Buyers Corporation, 1520 Broadway, New York City. The color suggested for repetition of numbers designates the Mood or Emotion, and is used as a code for such repetitions. Country of Origin, U. S. A.

Complete orchestrations and single piano parts of each separate number contained hereon, can be purchased from CAMEO MUSIC SERVICE CORPORATION, 315-317 WEST 47TH STREET, NEW YORK CITY.