



Esther Stephenson



ADOLPH ZUKOR and JESSE L. LASKY

present

POLA NEGRI

in

"THE WOMAN ON TRIAL"

with

Einar Hanson and Arnold Kent

A Mauritz Stiller Production

Play by Ernest Vajda

Screen play by Elsie Von Koczain

B. P. Schulberg, Associate Producer

Compiled by James C. Bradford

Footage 5960 feet

A Paramount Picture

*Spanish Dance
Grenada - Kreistler*

GEORGE EASTMAN MUSEUM

6 (Action) **PIERRE FALLS TO GROUND** Agitato Drammatico (Savino) ¾ Min.

All. Molto
Musical notation for 'PIERRE FALLS TO GROUND' in 2/4 time, marked 'All. Molto'. The score consists of a single staff with a treble clef, a key signature of two flats, and a common time signature. The music features a series of eighth and sixteenth notes with some rests and dynamic markings.
copyr 1928 Robbins Music corp.

7 (Title) **DURING THAT LONG NIGHT** Repeat Love Theme No. 5 2½ Min.

And^{te}
Musical notation for 'DURING THAT LONG NIGHT' in 2/4 time, marked 'And^{te}'. The score consists of a single staff with a treble clef, a key signature of one sharp, and a common time signature. The music is mostly rests on the staff.
copyr 1928 Robbins Music corp.

8 (Title) **I'LL TAKE THEM TO SHOP** A Love Song (Bartlett) 1¼ Min.
NOTE: Play "PP" con sordini strings only.

And^{te}
Musical notation for 'I'LL TAKE THEM TO SHOP' in 2/4 time, marked 'And^{te}'. The score consists of a single staff with a treble clef, a key signature of one sharp, and a common time signature. The music features a series of eighth and sixteenth notes with some rests and dynamic markings.
copyr 1910 G. Schirmer.

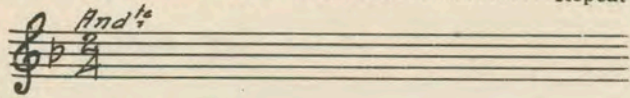
9 (Action) **DEALER WALKS FROM ROOM** Coeur Brise (Gillet) 1 Min.

And^{te}
Musical notation for 'DEALER WALKS FROM ROOM' in 2/4 time, marked 'And^{te}'. The score consists of a single staff with a treble clef, a key signature of one sharp, and a common time signature. The music features a series of eighth and sixteenth notes with some rests and dynamic markings.
copyr 1921 Carl Fischer.

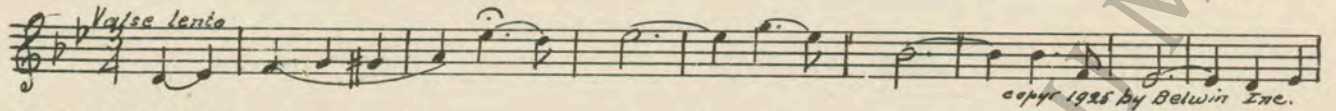
10 (Title) **SPEAK OF THE DEVIL**
NOTE: Play "PP" con sordini strings only.

GEORGE EASTMAN MUSEUM

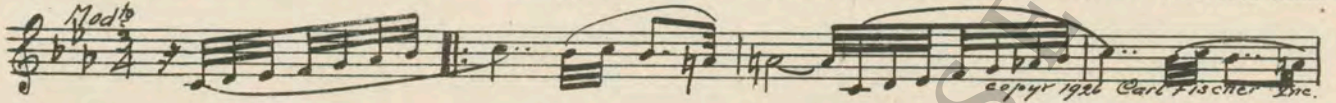
16 (Action) LATOUR WALKS INTO PICTURERepeat Latour Theme No. 10½ Min.



17 (Action) GUESTS DEPARTINGValse Dramatique (Rapee)2 Min.



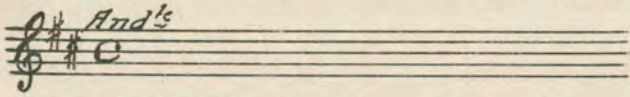
18 (Title) I LEARNED LATERTragico con Moto (Drigo's Cinema Classics)1¾ Min.



19 (Title) THAT SAME DAYOn the Steppes of Central Asia (Borodin)2¼ Min.



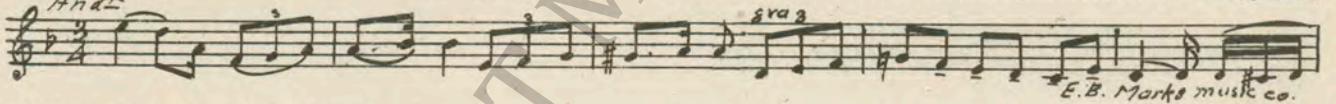
20 (Action) JULIE OPENS DOOR TO PIERRE'S ROOM.....Repeat Love Theme No. 53 Min.
NOTE: Start at letter A; play very quietly and drearily.



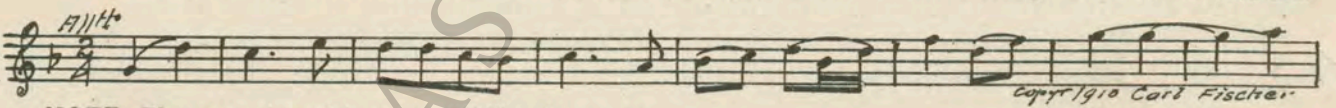
21 (Action) LATOUR OPENS DOORValse Triste (Sibelius)2¼ Min.
NOTE: Play "PP" con sordini strings only.



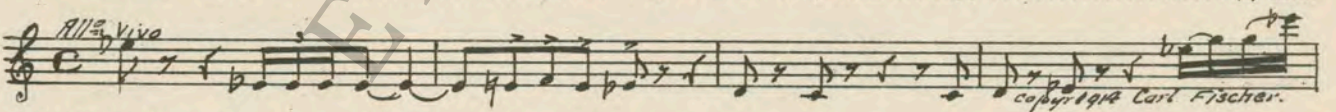
22 (Title) BUT VICTOR, HE'S DYINGDetresse (Pesse)¾ Min.
NOTE: Start at second movement—play very slow "PP".



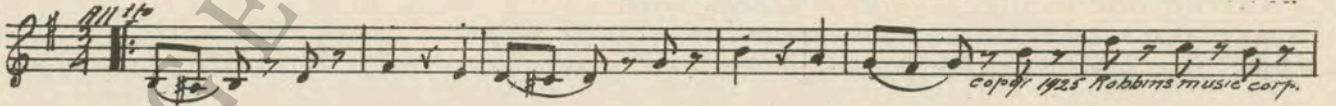
23 (Title) DAY AND NIGHT I LINGEREDBerceuse (Jarnefelt)3¾ Min.



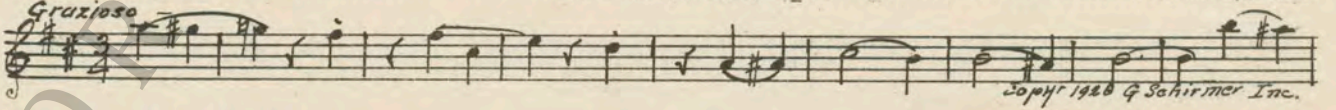
24 (Action) JULIE BREAKS WINDOWSymphony In B Minor (Tschaikowsky)¾ Min.
NOTE: Play very slow, 4 in a bar, "PP" strings only.



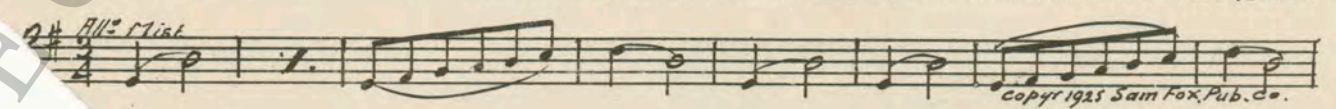
25 (Title) YOU KNOWSecond Misterioso a la. Valse (Savino)2 Min.
NOTE: Start at movement (8) with crash of glass.



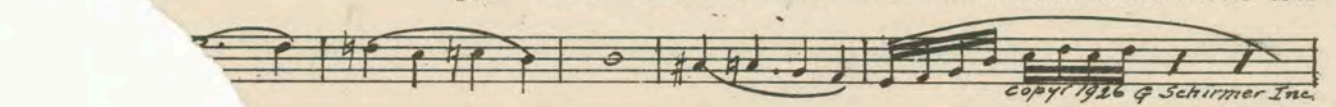
(Title) FOR A TIME I FORGOTThe Eaun (Wright)2½ Min.



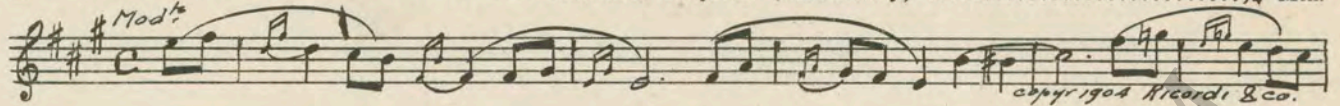
I HAD NO IDEA YOU WERE HEREA Mysterious Event (Zamecnik)1½ Min.



Y DAYAfter Twilight (Steindel)1 Min.



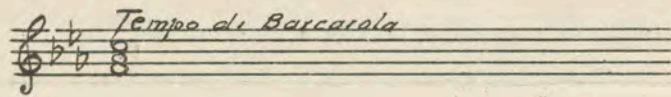
29 (Title) I RETURNED TO PARISSerenade Coquette (Barthelemy)¾ Min.



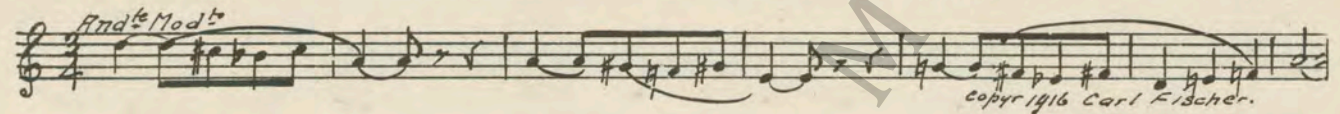
30 (Action) JULIE LOOKS OUT OF WINDOWAll Around the Mulberry Bush (Ascher)½ Min.



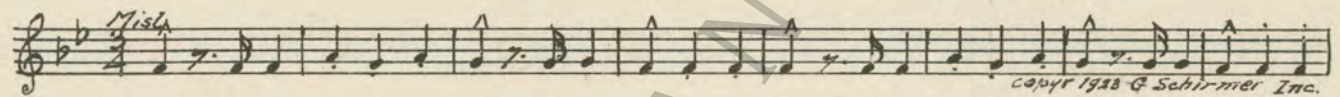
31 (Title) THEY WANT ME TO GO AWAYRepeat No. 13 "Little Man"¾ Min.



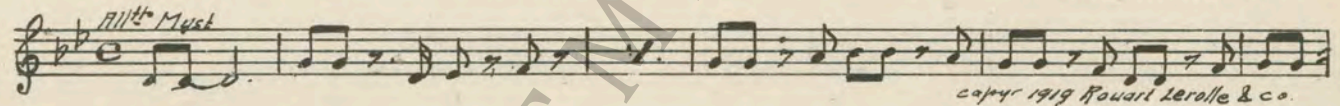
32 (Action) GUITAR IS BROKENPrelude from First Suite "Carmen" (Bizet)¾ Min.



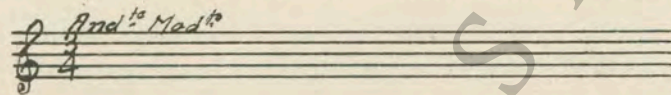
33 (Action) CHILD LEAVES ROOMMisterioso alla Valse (Savino)3¼ Min.



34 (Action) GASTON LOOKS AT WATCHLa Foret Perfide (Gabriel Marie)3¼ Min.



35 (Action) LATOUR CLOSES DOORRepeat No. 32 "Prelude"2 Min.



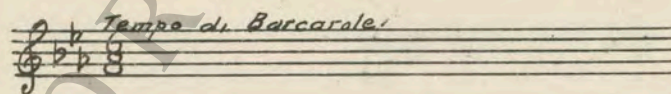
36 (Action) COURT ROOMNOTE: Place shot very carefully just before smoke is seen. Chanson Algerian (Bradford)1¼ Min.



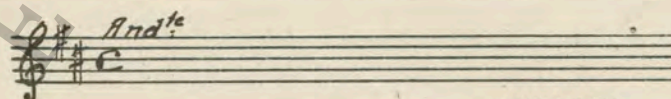
37 (Action) FOLLOWING TITLE: "THE JUDGMENT"Prelude-Largamente con passione (Savino)1 Min.



38 (Action) CHILD PLAYING ON BEACHRepeat No. 13 "Little Man"½ M



39 (Action) PIERRE APPEARSRepeat Love Theme No. 5



THE END

Country of Origin, U. S. A.

Complete orchestrations and single piano parts of each separate number contained hereon, can be from CAMEO MUSIC SERVICE CORPORATION, 315-317 WEST 47th STREET, NEW YORK

95:2605:1