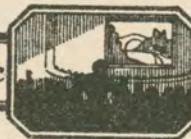


245

**Thematic Music**  **Cue Sheet**

M. J. MINTZ (PATENT)  
JULY 31, 1923.

ADOLPH ZUKOR and JESSE L. LASKY

present

**CECIL B. DeMILLE'S PRODUCTION**  
**"THE GOLDEN BED"**

Screen play by Jeanie Macpherson

Based on the novel by Wallace Irwin

Published serially in the Pictorial Review

with

Rod LaRocque, Vera Reynolds, Lillian Rich  
Warner Baxter, Theodore Kosloff and Julia Faye

Music compiled by James C. Bradford

Footage 8584 feet

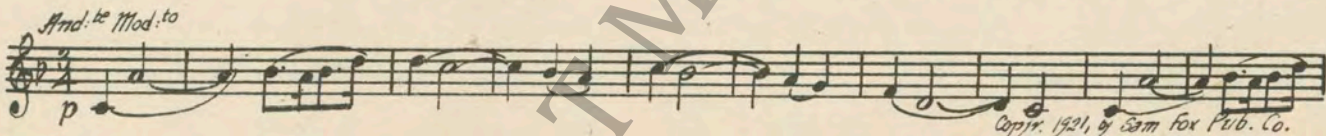


MUSEUM

- 1 AT SCREENING ..... L'Amour Redempteur (Gabriel Marie).....1½ Min.



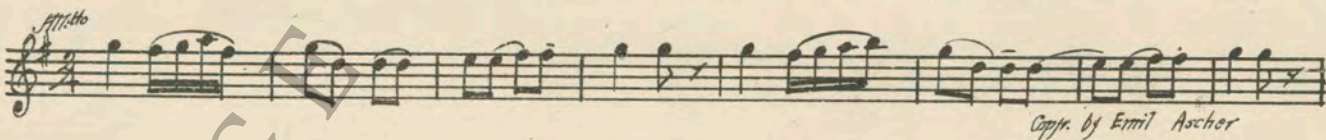
- 2 (Title) THE HOUSE OF HOLTZ..... Adieu (Zamecnik) .....¾ Min.



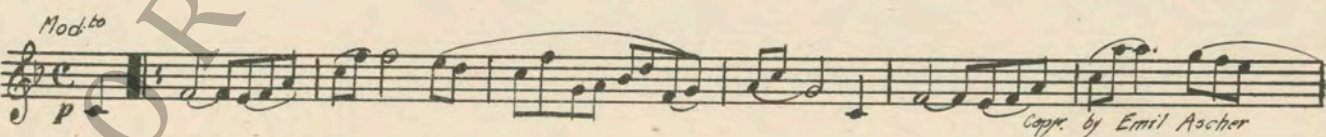
- 3 (Title) IN THE GREAT HOUSE..... Tres precieuse (Gabriel Marie).....1 Min.



- 4 (Title) IN THE OTHER HOUSE..... Children of the King (Ascher-Tavan).....2½ Min.

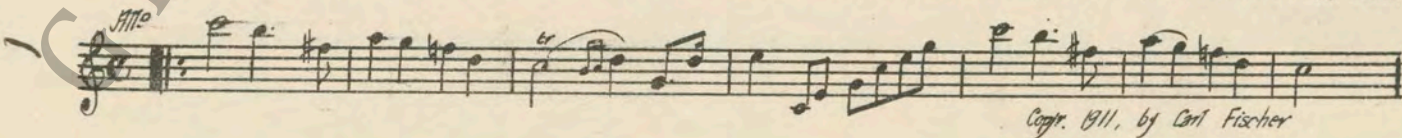


- 5 (Title) TEN YEARS ..... Traumerei (Schumann) .....½ Min.



NOTE: Play as Organ Solo very softly.

- 6 (Action) RECEPTION ..... Wedding March (Mendelssohn).....¾ Min.



7 (Title) SECOND FIDDLE ..... Debutante (Rapee-Axt) ..... 1½ Min.

Musical notation for 'SECOND FIDDLE' in G major, 2/4 time. The piece is marked 'Mod.to' and 'mf'. The score consists of a single staff with a treble clef. The music features a series of eighth and sixteenth notes, with some triplet markings. Copyright information: 'Copr. 1923, by Robbins - Engel Inc.'

8 (Title) THE "GOOSE" WHO WAS TO LAY ..... First Call of Spring (Smith) ..... 2½ Min.

Musical notation for 'THE "GOOSE" WHO WAS TO LAY' in G major, 2/4 time. The piece is marked 'Allegro grazioso' and 'p'. The score consists of a single staff with a treble clef. The music features a series of eighth and sixteenth notes, with some triplet markings. Copyright information: 'Copr. 1924, by Belwin, Inc.'

9 (Title) BY THE FRONT DOOR EXIT ..... Pensees d'Amour (Bucalossi) ..... 1¼ Min.

Musical notation for 'BY THE FRONT DOOR EXIT' in G major, 2/4 time. The piece is marked 'Mod.to' and 'mf'. The score consists of a single staff with a treble clef. The music features a series of eighth and sixteenth notes, with some triplet markings. Copyright information: 'Copr. 1907, by Boosey & Co.'

10 (Action) WINDOW—HELP WANTED SIGN ..... Sparklets (Miles) ..... 3½ Min.

Musical notation for 'WINDOW—HELP WANTED SIGN' in G major, 2/4 time. The piece is marked 'Mod.to' and 'mf'. The score consists of a single staff with a treble clef. The music features a series of eighth and sixteenth notes, with some triplet markings. Copyright information: 'Copr. 1912, by Sam Fox Pub. Co.'

11 (Title) IN THE SWISS ALPS ..... Matin virginal (Gabriel Marie) ..... 1¾ Min.

Musical notation for 'IN THE SWISS ALPS' in G major, 2/4 time. The piece is marked 'p'. The score consists of a single staff with a treble clef. The music features a series of eighth and sixteenth notes, with some triplet markings.

12 (Action) SAN PILAR ENTERS AND SPEAKS TO WIFE. Histoire Romanesque (Gabriel Marie) ..... 2½ Min.

Musical notation for 'SAN PILAR ENTERS AND SPEAKS TO WIFE' in G major, 2/4 time. The piece is marked 'And.te' and 'p'. The score consists of a single staff with a treble clef. The music features a series of eighth and sixteenth notes, with some triplet markings. Copyright information: 'Copr. by Chapetier'

13 (Title) THE GREAT GLACIER ..... Poeme D'Espoir (Gabriel Marie) ..... 3 Min.

Musical notation for 'THE GREAT GLACIER' in G major, 2/4 time. The piece is marked 'Poco lento' and 'p'. The score consists of a single staff with a treble clef. The music features a series of eighth and sixteenth notes, with some triplet markings.

14 (Action) SAN PILAR STARTS TO CLIMB DOWN TO LEDGE ..... La Foret Perfide (Gabriel Marie) ..... 2¾ Min.

Musical notation for 'SAN PILAR STARTS TO CLIMB DOWN TO LEDGE' in G major, 2/4 time. The piece is marked 'Allegro misterioso' and 'p'. The score consists of a single staff with a treble clef. The music features a series of eighth and sixteenth notes, with some triplet markings.

NOTE: Play quietly until Severac is drawn over ledge, then work up to big climax and finish with timpany roll as men are seen disappearing down crevice.

16 (Action) FLORA ENTERS OFFICE..... Excerpts from Sakuntala (Goldmark)..... :.....3 Min.

Musical notation for item 16, starting with *Mod.to* and *p*. Copyright 1929, by S.M. Rosenberg.

NOTE: Play only as far as the Trumpet Fanfares, and repeat.

17 (Title) IF IT ISN'T THE CANDY BOY..... Iris (Reynard) .....2½ Min.

Musical notation for item 17, starting with *Mod.to grazioso* and *p*. Copyright 1916, by Sam Fox Pub. Co.

18 (Title) WILL YOU PLEASE PILE UP..... Repeat Love Theme No. 15.....¾ Min.

Musical notation for item 18, starting with *Barcarolle*.

NOTE: Play very plaintive and slowly.

19 (Title) SO ADMAH LISTENED TO THE SONG..... FLORA THEME: Lorely (Luz).....¾ Min.

Musical notation for item 19, starting with *And.te* and *mf*. Copyright 1921, by Photo Play Music Co.

20 (Title) ADMAH'S WEDDING GIFT..... Serenade (Drigo) .....2½ Min.

Musical notation for item 20, starting with *All.to cantabile* and *p*. Copyright 1909, by Carl Fischer.

21 (Title) THE BONES OF CONTENTION..... Babillage (Gillet) .....2¼ Min.

Musical notation for item 21, starting with *f*. Copyright by Carl Fischer.

Shirley  
Dreano

... BALLS..... Love Scene (Vecsey)..... 1¾ Min.

✓ *Amabile*  
 *Copy. 1921, by G. Schirmer*

25 (Title) **ADMAH, YOU'RE TEARING DOWN EVERYTHING** ..... Repeat Love Theme No. 15..... 1¾ Min.

*Barcarolle*

26 (Action) **FLORA IN BOUDOIR**..... Les Precieuses (Gabriel Marie)..... 3 Min.

*Mod.to molto grazioso*

27 (Title) **A MAN'S HONOR**..... Put Away A Little Ray of Golden Sunshine (Ahlert)..... 2¼ Min.

✓ *Fox-trot*  
 *Copy. 1924, by Walderson, Berlin & Snyder*

28 (Title) **THE HUNT CLUB BALL**..... Magic Love (Bradford)..... 1½ Min.

*Valse lente*  
 *Copy. 1925, by Sam Fox Pub.*

NOTE: Play in sleepy dance tempo.

29 (Action) **FLASH-BACK TO CANDY BALL**..... Big Boy (Ager)..... 2½ Min.

*Fox-trot*  
 *Copy. 1924, by Peter Millen & Dorfstein*

30 (Title) I DIDN'T COME TO PLAY.....Dramatic Agitato (Berge).....3½ Min.

✓ Musical notation for 'I DIDN'T COME TO PLAY' in G major, 2/4 time. The piece is marked 'Mod.to' and 'mf'. It features a melodic line with eighth and sixteenth notes. Copyright: 1922 by Ross Jennings.

NOTE: When umbrellas fly from ceiling, play cymbal roll.

31 (Title) THE SHOW'S OVER.....Appassionato No. 2 (Axt).....4 Min.

Musical notation for 'THE SHOW'S OVER' in G major, 2/4 time. The piece is marked 'All.o appassion.' and 'col.sra.'. It features a melodic line with eighth and sixteenth notes. Copyright: 1924 by Robbins-Engel.

32 (Title) ALL RIGHT CANDY PEDDLER.....Prologue (Gabriel Marie).....2½ Min.

Musical notation for 'ALL RIGHT CANDY PEDDLER' in G major, 3/4 time. The piece is marked 'Large e doloroso' and 'sf'. It features a melodic line with eighth and sixteenth notes. Copyright: 1924 by Robbins-Engel.

33 (Title) SO THE STATE TAKES ITS FIVE YEARS....Repeat Love Theme No. 15.....1½ Min.

Musical notation for 'SO THE STATE TAKES ITS FIVE YEARS' in G major, 6/8 time. The piece is marked 'Bercecelle'. It consists of a single melodic line on a five-line staff.

NOTE: Play "PP" con sordini, strings only.

34 (Title) THE SAME BITTER YEARS.....Just A Girl That Men Forget (Garren).....1½ Min.

✓ Musical notation for 'THE SAME BITTER YEARS' in G major, 2/4 time. The piece is marked 'Valse Mod.to' and 'p/f'. It features a melodic line with eighth and sixteenth notes. Copyright: 1923, by Jack Mills Inc.

NOTE: Play "PP" con sordini, strings only.

35 (Title) FINE HOUSES AND FINE LADIES.....Home Sweet Home.....1 Min.

✓ Musical notation for 'FINE HOUSES AND FINE LADIES' in G major, 2/4 time. The piece is marked 'Mod.to' and 'mp'. It features a melodic line with eighth and sixteenth notes.

NOTE: Play "PP" con sordini, Cello Solo.

36 (Action) WOMAN OPENS DOOR.....Memories (Kussner) .....2¼ Min.

Musical notation for 'WOMAN OPENS DOOR' in G major, 2/4 time. The piece is marked 'Mod.to' and 'mp'. It features a melodic line with eighth and sixteenth notes. Copyright: 1910 by Bosworth & Co.

NOTE: Play "PP" con sordini.

37 (Action) FLORA ENTERS HOUSE.....Berceuse (Jarnfelt) .....2¼ Min.

Musical notation for 'FLORA ENTERS HOUSE' in G major, 2/4 time. The piece is marked 'And.to' and 'p'. It features a melodic line with eighth and sixteenth notes. Copyright: 1910, by Carl Fischer.

NOTE: lay "PP" con sordini, strings only very slow and draggy.

38 (Action) MARGARET IN SHOP WAITING.....The Coquette (Deppen).....1¼ Min.

Musical notation for item 38, featuring a treble clef, a key signature of one sharp (F#), and a 3/8 time signature. The tempo marking is *All Ho* and the dynamic is *mf*. The copyright notice reads: *Copyr. 1921, by Sam Fox Pub. Co.*

39 (Title) ADMAH'S FIRST FREE STEPS.....Smilin' Through (Penn).....1¼ Min.

Musical notation for item 39, featuring a treble clef, a key signature of one sharp (F#), and a 3/8 time signature. The tempo marking is *Slowly and Simply* and the dynamic is *p*. The copyright notice reads: *Copyr. 1922, by M. Wilmark & Sons*

40 (Action) FLASH-BACK TO MARGARET.....Repeat Love Theme No. 15.....¾ Min.

Musical notation for item 40, consisting of a treble clef, a key signature of one flat (Bb), and a 3/8 time signature. The tempo marking is *Barcarolle*.

41 (Action) FLASH-BACK TO ADMAH AT DOOR.....Lorely (2nd Part) (Catalani).....2¼ Min.

Musical notation for item 41, featuring a treble clef, a key signature of one sharp (F#), and a 3/8 time signature. The tempo marking is *And<sup>te</sup> Tranquillo* and the dynamic is *mf*. The copyright notice reads: *Copyr. 1917, by Ricordi & Co.*

42 (Title) I HAVEN'T FORGOTTEN.....Repeat Flora Theme No. 19.....1½ Min.

Musical notation for item 42, consisting of a treble clef, a key signature of one flat (Bb), and a 3/8 time signature. The tempo marking is *And<sup>te</sup>*.

NOTE: Play "PP" strings only.

43 (Title) DON'T LEAVE ME BUNNY.....Valse Triste (Sibelius).....1¼ Min.

Musical notation for item 43, featuring a treble clef, a key signature of one sharp (F#), and a 3/4 time signature. The tempo marking is *Valse lento*. The copyright notice reads: *Copyr. 1917, by Breitkopf & Hartel.*

NOTE: Play first two strains only.

44 (Action) MARGARET ASLEEP AT SHOP.....Just A Wearyin' For You (Bond).....2¼ Min.

Musical notation for item 44, featuring a treble clef, a key signature of one flat (Bb), and a 3/8 time signature. The tempo marking is *And<sup>te</sup>*. The copyright notice reads: *Copyr. 1918 by Arnett - Delonais & Co.*

NOTE: Play "PP" con sordini, strings only.

45 (Title) IT'S TOMORROW ADMAH.....Repeat Love Theme No. 15.....¾ Min.

Musical notation for item 45, consisting of a treble clef, a key signature of one flat (Bb), and a 3/8 time signature. The tempo marking is *Barcarolle*.

Country of Origin, U. S. A.

THE END

Complete Orchestrations and single parts of all compositions contained herein can be purchased from CAMEO MUSIC SERVICE CORPORATION, 112-118 West 44th Street, New York City

95:1843:1