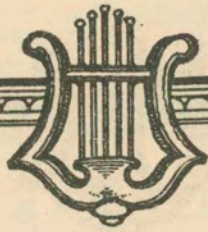
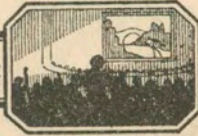


60.



Thematic Music

TRADE-MARK



Cue Sheet

M. J. MINTZ (PATENT)
JULY 31, 1923.

“CHICKIE”

A FIRST NATIONAL PICTURE

MUSIC COMPILED BY

JAMES C. BRADFORD

Complete Orchestrations and single parts of all compositions contained herein can be purchased from CAMEO
MUSIC SERVICE CORPORATION, 112-118 West 44th Street, New York City

MADE IN U. S. A.



GEORGE EASTMAN MUSEUM

M. J. MINTZ (PATENT)
JULY 31, 1923.

"CHICKIE"

Music compiled by James C. Bradford

- 1 AT SCREENING Petite Suite de Concert (Taylor) (1st Move.) 1/2 Min.

All.º con brio

Copy. 1911, by Hawkes & Son.

- 2 (Action) CHICKIE AT WINDOW TYPING CHICKIE THEME: Pleading (Wood) 2 1/2 Min.

Mod.º to
mp

Copy. 1914, by Hawkes & Son.

- 3 (Title) TO ILA MOORE Rendez-Vous (Aletter) 2 1/2 Min.

Garotte
mp

Copy. by Goswami & Co.

- 4 (Action) CHICKIE SEES BARRY AND ILA Jealous (Little) 1 Min.

Mod.º to
pf

Copy. 1924, by Henry Waterson.

- 5 (Title) BESS ABBOTT'S HOLDING Waltz-Scherzo (Straus) 3/4 Min.

All.º
trio

Copy. 1910, by G. Schirmer.

- 6 (Title) TO JONATHEN BRYCE A Musical Thought (Titlebaum) 2 Min.

Mod.º to

Copy. 1920, by G. Schirmer, Inc.

- 7 (Title) ENTRANCE TO MUNSON'S HOME Valse Celebre (Moskowski) 2 1/2 Min.

Valse Mod.º to
p

Copy. 1924, by G. Schirmer.

- 8 (Action) MUNSON UNDER SHOWER I Love Me (Mahoney) 1 Min.

Mod.º to
f

Copy. 1923, by Broadway Music Co.

- 9 (Action) GIRLS ON STAIRCASE Valse Violette (Ludwig) 2 1/4 Min.

Valse lente
p

Copy. 1921, by Carl Ludwig

- 10 (Title) JAKE'LL BE RIGHT DOWN BARRY THEME: Will You Remember Me (Santly) 2 Min.

Mod.º to
f

Copy. 1924, by Leo Feist, Inc.

NOTE: Play "PP" strings only!

11 (Action) CHICKIE STARTS UPSTAIRSThe Mice and the Trap (Kohler)2 Min.

Musical notation for Chickie Starts Upstairs. Includes tempo marking *Allegro* and copyright notice: *Copyright 1900, by Carl Fischer.*

12 (Action) BARRY CATCHES CHICKIESpring Blossoms (Hersom)1 1/4 Min.

Musical notation for Barry Catches Chickie. Includes tempo marking *Mod.to* and dynamic markings *pp* and *arco*. Copyright notice: *Copyright 1920, by G. Schirmer.*

13 (Action) CHICKIE AND BARRY ENTER AUTOThrills (Sanders)2 Min.

Musical notation for Chickie and Barry Enter Auto. Includes tempo marking *Cresc.* and dynamic marking *mf*. Copyright notice: *Copyright 1925, by Geo. H. Sanders.*

NOTE: Play "PP" for flash-backs.

14 (Action) CHICKIE WAKES UPRepeat Barry Theme No. 102 Min.

Musical notation for Chickie Wakes Up. Includes tempo marking *Mod.to*.

15 (Action) FATHER SEES CHICKIEElegie (Arensky)1 1/2 Min.

Musical notation for Father Sees Chickie. Includes tempo marking *Adagio* and dynamic marking *mf*. Copyright notice: *Copyright 1923, by G. Schirmer.*

16 (Action) MUNSON TELEPHONINGBig Boy! (Ager)1 3/4 Min.

Musical notation for Munson Telephoning. Includes tempo marking *Mod.to*. Copyright notice: *Copyright 1924, by H. J. Follen & Bornstein.*

17 (Action) CHICKIE AND BARRY AT BROOKRepeat Chickie Theme No. 23 1/2 Min.

Musical notation for Chickie and Barry at Brook. Includes tempo marking *And.to Mod.to*.

18 (Action) CHICKIE AND MUNSON AT APARTMENT DOORFleeting Shadows (Weiss)4 1/4 Min.

Musical notation for Chickie and Munson at Apartment Door. Includes tempo marking *Mof. alla Valse*. Copyright notice: *Copyright 1925, by Geo. H. Sanders.*

19 (Title) BARRY DUNNE'S HOMEIn Poppyland (Albers)1 3/4 Min.

Musical notation for Barry Dunne's Home. Includes tempo marking *Mod.to*. Copyright notice: *Copyright 1916, by Sam Fox Pub. Co.*

20 (Action) FLASH-BACK TO CHICKIE AND MUNSON....Little Moth. Keep Away from the Flame (Von Tilzer).....1 1/4 Min.

Musical notation for Flash-back to Chickie and Munson. Includes tempo marking *Mod.to*. Copyright notice: *Copyright 1904, by Harry Von Tilzer.*

21 (Action) BARRY AND MOTHERDebutante (Rap.e-Axt)3/4 Min.

Musical notation for Barry and Mother. Includes tempo marking *Mod.to* and dynamic marking *mf*. Copyright notice: *Copyright 1913, by Robbins-Langford, Inc.*

22 (Action) CHICKIE AND MUNSON AT DINNER TABLE. Love Scene (Vecsey)1 1/4 Min.

Musical notation for Chickie and Munson at Dinner Table. Includes tempo marking *Allegro con moto* and dynamic marking *p*. Copyright notice: *Copyright 1921, by G. Schirmer.*

23 (Action) BARRY SEES CHICKIERomance (Rubenstein)3 1/2 Min.

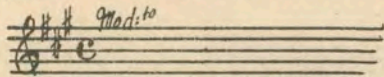
Musical notation for Barry Sees Chickie. Includes tempo marking *And.to con moto* and dynamic marking *mf*. Copyright notice: *Copyright 1920, by Carl Fischer.*

24 (Action) INSERT—PAGE OF DIARYWhat'll I Do (Berlin)1 1/2 Min.

Musical notation for Insert—Page of Diary. Includes tempo marking *Alto Mod.to*. Copyright notice: *Copyright 1924, by Berlin, Inc.*

25 (Title) I FOLLOWED YOU UP HERERepeat Barry Theme No. 102 1/4 Min.

25 (Action) INSERT—LETTER “MY DEAR CHICKIE” Repeat No. 4 “Jealous” 1½ Min.



NOTE: Play as a ballad, strings only, con sordini.

27 (Action) GIRLS LEAVE DINING ROOM—CHICKIE REMAINS BEHIND Repeat No. 24 “What’ll I Do” 2½ Min.

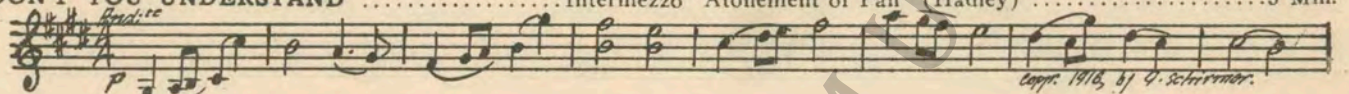
NOTE: Play “PP” con sordini, strings only, very plaintive.

28 (Title) NOW FOR MY LITTLE SURPRISE Air de Ballet (Massenet) 2¼ Min.

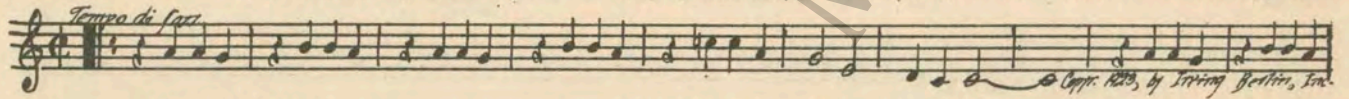


NOTE: Play 1st strain only, very slowly.

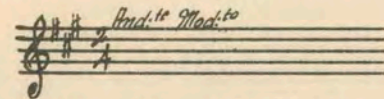
29 (Title) DON'T YOU UNDERSTAND Intermezzo “Atonement of Pan” (Hadley) 3 Min.



30 (Action) JANINA IN BED — ANSWERS PHONE Oh Baby (Donaldson) 1¼ Min.



31 (Action) FLASH-BACK TO CHICKIE Repeat Chickie Theme No. 2 ½ Min.



32 (Action) CHICKIE ENTERS OFFICE All Alone (Berlin) 2 Min.

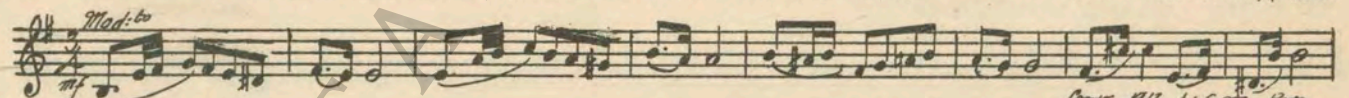


NOTE: Play “PP” con sordini, strings only, plaintive.

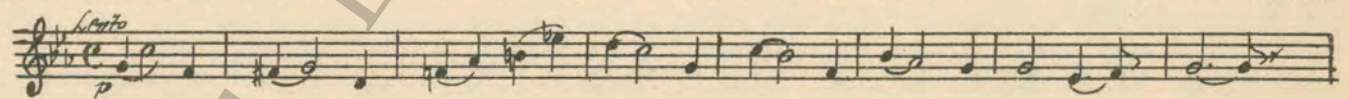
33 (Title) THE LONDON OFFICES Petite Bijouterie (Bohm) 1¾ Min.



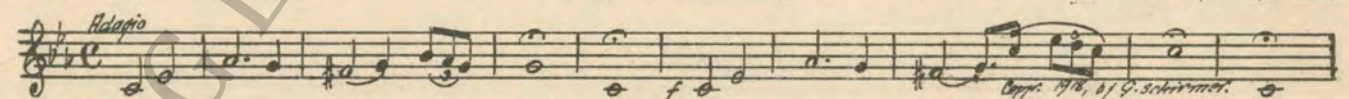
34 (Action) ILA TAKES LETTER FROM POSTMAN Dram. Tension No. 36 (Andino) 1¼ Min.



35 (Action) CHICKIE AND FAMILY Poeme d' Espoir (Gabriel Marie) 5 Min.

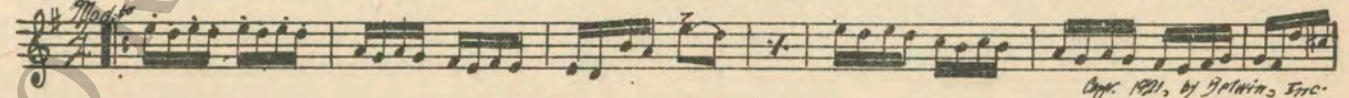


36 (Action) BELL RINGS Elegie (Lubomirsky) ½ Min.

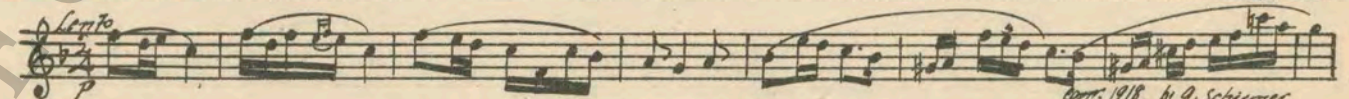


NOTE: Play 1st movement without the arpeggios, muted brass.

37 (Action) BARRY AND FRIENDS ENTER OFFICE Air de Ballet (Varley) 1 Min.



38 (Action) FOR SALE—SIGN Erotic (Grieg) 2¾ Min.



39 (Action) BELL RINGS AGAIN Repeat No. 36 “Elegie” 1½ Min.

NOTE: Start at beginning and play straight ahead, omitting the cadenzas in 1st movement.

40 (Action) BARRY EMBRACES CHICKIE Repeat Chickie Theme No. 2 1½ Min.

THE END

Country of Origin, U. S. A.

Complete Orchestrations and single parts of all compositions contained herein can be purchased from CAMEL MUSIC SERVICE CORPORATION, 112-118 West 44th Street, New York City