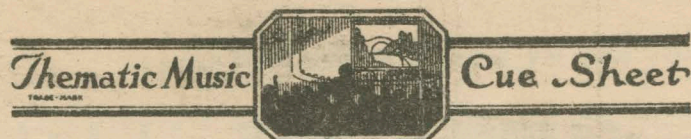


Monday + Tuesday  
May 17-18

1



M. J. MINTZ (PATENT)  
JULY 31, 1923.

# CARL LAEMMLE

presents  
"THE COHENS AND KELLYS"

A Harry Pollard Production  
with

George Sidney, Charles Murray and Vera Gordon  
Adopted from the play "Two Blocks Away" by Aaron Hossman

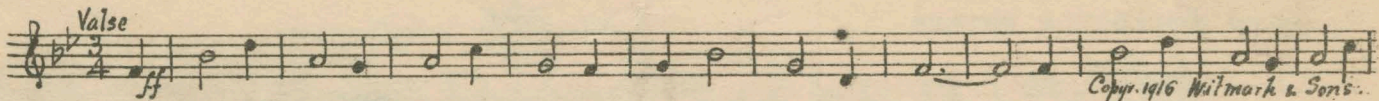
Music compiled by James C. Bradford

UNIVERSAL-JEWEL

1 AT SCREENING ..... Has Anybody Here Seen Kelly ..... 1 1/4 Min.



2 (Title) NEW YORK CITY ..... The Streets of New York from "Red Mill" (Herbert) ..... 1 Min.

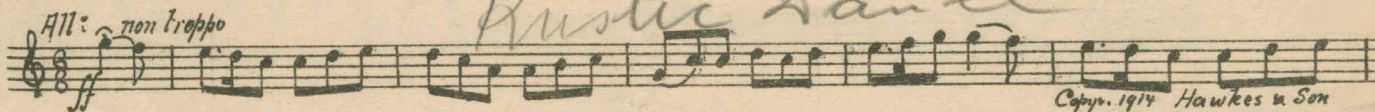


3 (Title) COMPETITION WAS ..... Oi di Liebe (King) ..... 1 1/4 Min.

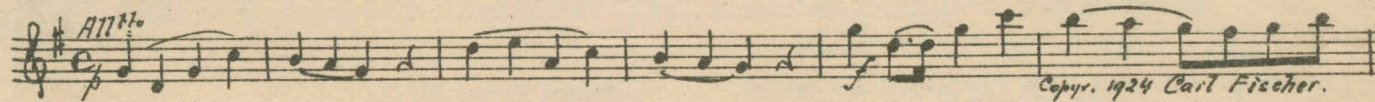


4 (Title) PATRICK KELLY ..... Repeat No. 1 "Has Anybody Here Seen Kelly" ..... 1 Min.

5 (Action) ARGUMENT STARTS IN HALLWAY ..... No. 3 "Three Irish Pictures" (Ansell) ..... 3 Min.



6 (Title) TROUBLES, TROUBLES ..... Chanukkak "King Solomon" (Tobani) ..... 1 Min.



7 (Action) NANNIE AND TERENCE ALONE ..... THEME: Kosher Kitty Kelly (De Costa) ..... 2 Min.



8 (Action) PAT AND BOY AT TABLE ..... Repeat No. 5 "Three Irish Pictures" ..... 3/4 Min.

D. Sign - Main Entrance

2

9 (Action) SIGN—MAIN ENTRANCE ..... Mazel Tof (Ascher) ..... 3 Min.

Musical notation for SIGN—MAIN ENTRANCE. Includes markings: *All<sup>o</sup>*, *tr*, *tr*, *tr*, *tr*. Copyright: 1914 G. Ascher.

10 (Title) FOR WHY SHOULD YOU EAT MY HEART.. Frailach No. 5 (Ascher) ..... 2¾ Min.

Musical notation for FOR WHY SHOULD YOU EAT MY HEART.. Includes marking: *All<sup>o</sup>*. Copyright: 1915 G. Ascher.

11 (Title) SO! ..... Repeat No. 9 "Mazel Tof" ..... 2 Min.  
12 (Title) EVENING FINDS ..... Sweet Rosie O'Grady from "Old Timers" (Lake) (Direct Cue) 1½ Min.

Musical notation for EVENING FINDS. Includes marking: *Waltz*. Copyright: 1917 Carl Fischer.

13 (Action) NANNIE AND TERENCE AT DOOR ..... Scherzando Hurry (Frey) ..... 1¾ Min.

Musical notation for NANNIE AND TERENCE AT DOOR. Includes markings: *Scherzando*, *mf*. Handwritten: *Comic Hurry*. Copyright: 1925 Robbins - Engel.

14 (Title) I WOULD RATHER MINE NANNIE ..... Gigue (Gretry-Mottl) ..... 1¾ Min.

Musical notation for I WOULD RATHER MINE NANNIE. Includes marking: *All<sup>o</sup>*. Copyright: 1916 Carl Fischer.

15 (Action) COLLECTOR ENTERS ..... Hebrew Love Song (Korsakow) ..... 3 Min.

Musical notation for COLLECTOR ENTERS. Includes marking: *Adagio*. Handwritten: *Song of Zion*. Copyright: 1917 G. Schirmer.

16 (Title) YOU'VE BEEN DODGING ME ALL DAY..... Kosatzki (Fleischmann) ..... 2¾ Min.

Musical notation for YOU'VE BEEN DODGING ME ALL DAY..... Includes marking: *All<sup>o</sup>*.

17 (Title) SIX MONTHS ..... Oh Joseph (Fall) ..... 1¾ Min.

Musical notation for SIX MONTHS. Includes marking: *Mod<sup>to</sup>*, *mf-f*. Handwritten: *Oh Joseph*. Copyright: 1924 Harms Inc.

18 (Action) TERENCE AT GATE ..... A Kiss in the Moonlight (Gaskill) ..... 2 Min.

Musical notation for TERENCE AT GATE. Includes marking: *Mod<sup>to</sup>*. Handwritten: *Valse*. Copyright: 1925 Harms Inc.

Good-Bye

NOTE: Play "P" very sweetly.

19 (Action) NANNIE AND TERENCE AT GATE..... Repeat Theme No. 7..... 1½ Min.  
NOTE: Play "PP" con sordini strings only.

20 (Action) NANNIE TURNS TERENCE'S HEAD..... Rock-a-Bye Baby (Luz) ..... 1 Min.

Musical notation for NANNIE TURNS TERENCE'S HEAD..... Includes marking: *And<sup>te</sup>*. Copyright: 1922 Photo Play Music.

NOTE: Play "PP" con sordini.

21 (Action) PAT PLAYING VIOLIN ..... Come Back to Erin from "Emerald Isle" (Langey)..... 1¾ Min.

Musical notation for PAT PLAYING VIOLIN. Includes marking: *Mod<sup>to</sup>*. Copyright: 1918 G. Schirmer.

NOTE: Play as Violin Solo.

22 (Title) WE'VE BEEN HARD ON THE COHENS..... Mother Machree (Olcott) ..... ¾ Min.

Musical notation for WE'VE BEEN HARD ON THE COHENS..... Includes marking: *Valse-Lente*. Copyright: 1914 M. Witmark.

D - Flashback to Party -

3

# Cohen's and Kelly's

23 (Action) FLASH-BACK TO PARTY ..... Polish Bamberrock (Ascher) *Polish Dance* ..... 1 Min. ✓

*Kujawiak*

Copyr. 1915 Emil Ascher.

24 (Action) OLD COHEN'S FACIAL EXPRESSION SOFTENS ..... Kol Nidre (Roberts) ..... 1 Min.

*Adagio*

Copyr. 1913 Carl Fischer.

25 (Action) BOY TURNS ON WATER. COHEN TELEPHONING ..... Repeat No. 13 "Scherzando Hurry" ..... 3 Min.  
Gossip (Borch) ..... 1 3/4 Min.

*All!*

Copyr. 1925 Belwin Inc.

27 (Action) NANNIE AND MOTHER ..... My Yiddish Momme (Pollack) ..... 1 Min. ✓

*Mod<sup>to</sup>*

*Wonderful Mother of Mine*

Copyr. 1925 Ager, Yellen & Bornstein

NOTE: Play "PP" con sordini strings only.

28 (Title) WHILE NAT WAS TAKING ..... Slumber Boat (Gaynor) *Cansonetta* ..... 2 Min.

*Mod<sup>to</sup>*

Copyr. 1923 Clayton F. Summy

29 (Title) CONGRATULATIONS, NATHAN ..... Dram. Andante No. 15 (Rapee-Axt) ..... 3 Min.

*Sostenuto*

Copyr. 1923 Robbins & Engel, Inc.

30 (Title) TERRY KELLY ..... Appassionato Dramatico (Berge) ..... 1 1/2 Min.

*Con moto appass.*

Copyr. 1925 Robbins & Engel.

31 (Title) THE FOLLOWING WEEK ..... Londonderry Air (Roberts) ..... 2 Min.

*And<sup>te</sup>*

Copyr. 1922 Carl Fischer.

32 (Title) HE'LL LET ME SEE IT ..... The B'Hoys of Tipperary (Amers) ..... 1 1/2 Min.

*Marcia*

Copyr. 1915 Hawkes & Son

33 (Action) CHILDREN START FIGHT ..... Paddy Whack (Ascher) ..... 3/4 Min.

*Jig*

Copyr. 1915 Emil Ascher.

34 (Title) I COME TO SEE THE BABY ..... That's An Irish Lullaby (Shannon) ..... 2 Min. ✓

*With expression*

*Little Bit of Heaven*

Copyr. M. Witmark & Sons

35 (Title) THE OLD MAN ..... Garry Owen (Ascher) ..... 1 1/4 Min.

*Jig*

Copyr. 1915 Emil Ascher.

D - Nannie and Baby appear in Doorway

4

36 (Action) NANNIE AND BABY APPEAR IN DOORWAY. Cup of Bitterness (Zamecnik) ..... 2 Min.

Musical notation for item 36. Tempo: *And<sup>te</sup> dramatico*. Copyright: 1925 Sam Fox Pub. Co.

37 (Action) PAT RETURNS TO ROOM ..... A Legend of Erin (Johnson) ..... 2 Min.

Musical notation for item 37. Tempo: *All<sup>te</sup> comodo*. Handwritten: *Intermezzo Inlandais*. Copyright: 1922 Belwin Inc.

38 (Action) PAT FINALLY LEAVES ..... Repeat No. 15 "Hebrew Love Song" ..... 2 Min.  
39 (Title) MAMMA! ..... Omens (Schad) ..... 3/4 Min.

Musical notation for items 38 and 39. Tempo: *All<sup>te</sup> mod<sup>to</sup>*. Handwritten: *Hebrew Love Song*, *combat*. Copyright: 1925 Geo. H. Sanders

40 (Action) PAT WITH FAMILY AND NANNIE ..... A Gaelic Dream-Song (Foulds) ..... 2 Min.

Musical notation for item 40. Tempo: *Expressivo*. Copyright: 1922 Hawkes & Son.

41 (Title) A LITTLE GRAND OPERA ..... Adagio Elegiaque (Wieniawski) ..... 3 3/4 Min.

Musical notation for item 41. Tempo: *Adagio*. Handwritten: *Intermezzo*. Copyright: 1924 G. Schirmer.

42 (Action) PAT HOLDING BABY ..... Erin Go Braugh (DeWitt) ..... 1 Min.

Musical notation for item 42. Tempo: *All<sup>te</sup>*. Copyright: 1914 Carl Fischer.

43 (Action) FLASH-BACK TO COHEN AND GOLDBERG... Despised (Zamecnik) ..... 2 Min.

Musical notation for item 43. Tempo: *And<sup>te</sup> con moto*. Handwritten: *And<sup>te</sup> dram. 62*. Copyright: 1925 Sam Fox Pub. Co.

44 (Action) FLASH-BACK TO PAT AND FAMILY..... Repeat Theme No. 7 ..... 1 Min.  
45 (Action) COHEN IN HALLWAY..... Dort wo die Zeder (Katz) ..... 1 Min.

Musical notation for items 44 and 45. Tempo: *And<sup>te</sup>*. Copyright: 1919 Carl Fischer.

46 (Title) I'VE BEEN A STUBBORN OLD FOOL..... Pleading (Wood) ..... 3 1/2 Min.

Musical notation for item 46. Tempo: *And<sup>te</sup> mod<sup>to</sup>*. Copyright: 1916 Hawkes.

47 (Title) IT'S A FINE GRAND-DAD YOU ARE..... Repeat No. 20 "Rock-a-Bye Baby" ..... 3/4 Min.  
48 (Title) TWO MONTHS ..... Let It Rain, Let It Pour (Donaldson) ..... 2 Min.

Musical notation for items 47 and 48. Tempo: *Mod<sup>to</sup>*. Copyright: 1925 Leo Feist Inc.

Printed in U. S. A.

THE END

Complete orchestrations and single piano parts of each separate number contained hereon, can be purchased from CAMEO MUSIC SERVICE CORPORATION, 315-317 West 47th Street, New York City.

95-1698-2