

Andante Cantabile - Inside



M. J. MINTZ (PATENT)  
JULY 31, 1923



# GRETA GARBO in THE DIVINE WOMAN



with  
**LARS HANSON and LOWELL SHERMAN**  
A VICTOR SEASTROM PRODUCTION

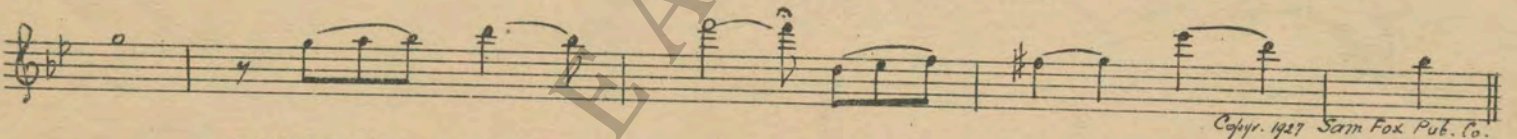
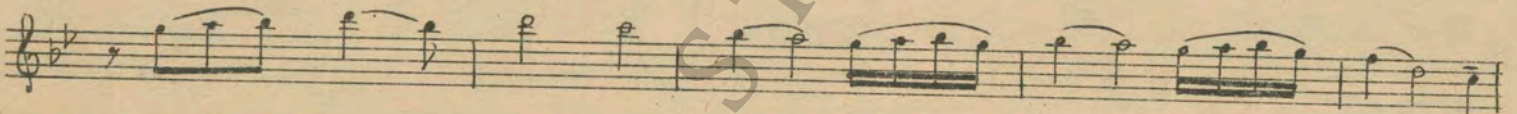
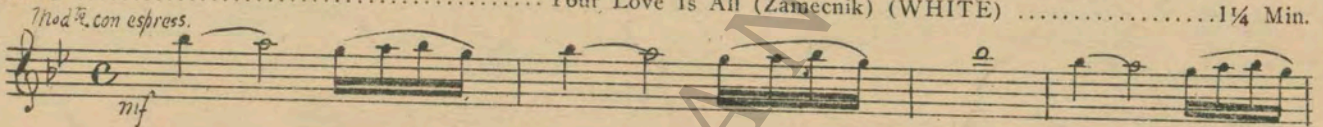
Treatment by Gladys Unger  
Based on her play "Starlight"  
Scenario by Dorothy Farnum  
Directed by Victor Seastrom  
Compiled by Ernst Luz

**A METRO-GOLDWYN-MAYER PICTURE**

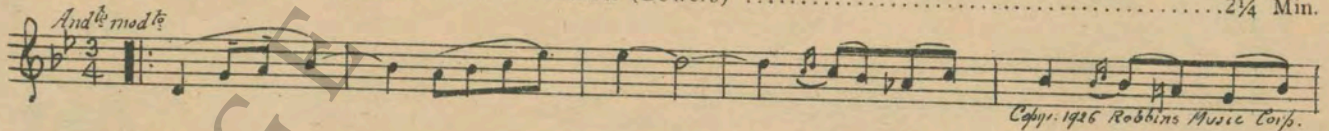
Length of film 8 reels (7260 feet)

Maximum projection time 1 hour, 25 minutes

1 AT SCREENING ..... Your Love Is All (Zamecnik) (WHITE) ..... 1 1/4 Min.

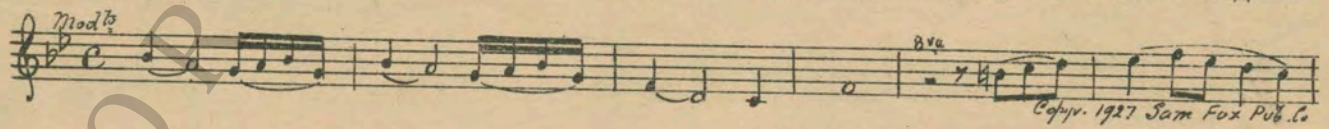


NOTE: Play introduction and chorus.  
2 (Title) TO UNDERSTAND THIS WOMAN ..... Isabel (Bowers) ..... 2 1/4 Min.



Copyright 1926 Robbins Music Corp.

3 (Title) IN BRITTANY ..... Your Love Is All (Zamecnik) (WHITE) ..... 1/4 Min.



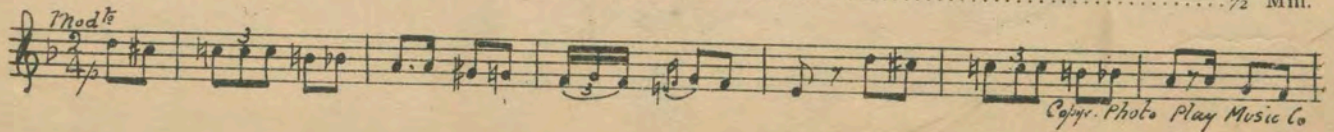
Copyright 1927 Sam Fox Pub. Co.

4 (Action) FADE-OUT OF BEDROOM SCENE ..... Chanson Francaise (Marquardt) (YELLOW) ..... 1/4 Min.



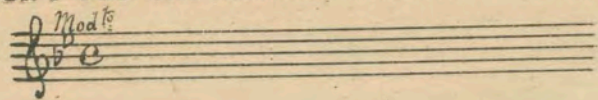
Copyright 1927 Photo Play Music Co.

5 (Action) WOMAN AND MAN WALK OUT OF DINING ROOM TO HALL ..... Habanera from "Carmen" ..... 1/2 Min.

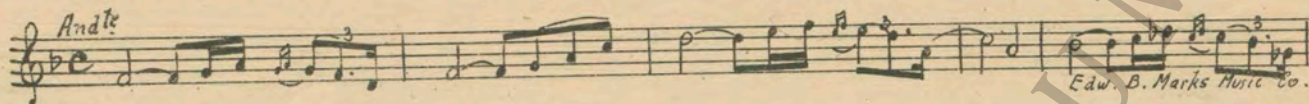


Copyright Photo Play Music Co.

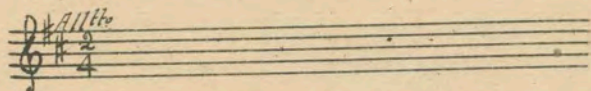
6 (Title) DON'T YOU UNDERSTAND ..... Repeat No. 3 (WHITE) ..... 1 1/4 Min.



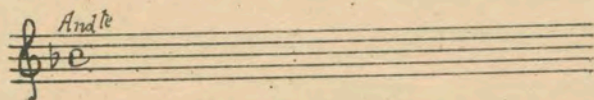
7 (Action) CHILD EMBRACES MOTHER ..... Serenade passionnee (Heymann) (DK. BLUE) ..... 1 Min.



8 (Action) CHILD PUTS ON CLOAK ..... Repeat No. 4 (YELLOW) ..... 1/2 Min.



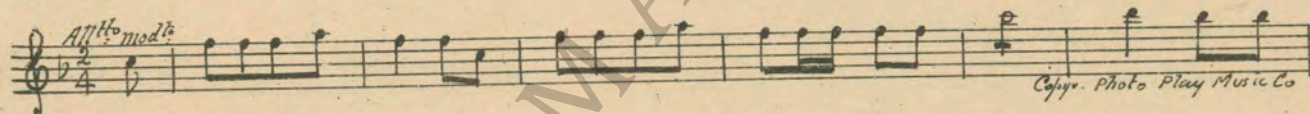
9 (Title) A PORTRAIT OF ONE OF MY DEPARTED HUSBANDS ..... Repeat No. 7 (DK. BLUE) ..... 3/4 Min.



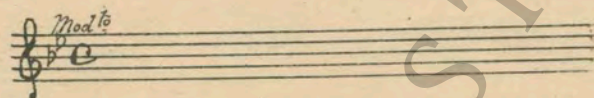
10 (Action) SCREEN FALLS DOWN ..... Film Theme No. 1 (Tschaikowsky) ..... 1/2 Min.



11 (Action) FADE-OUT OF MAN SEATED ON FLOOR ... Carabi (Old French Chant) ..... 1 Min.



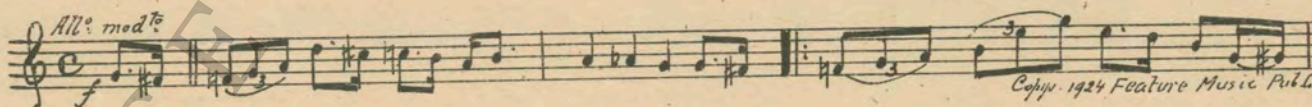
12 (Action) GIRL STOPS ON STEPS TO HOUSE ..... Repeat No. 3 (WHITE) ..... 3/4 Min.



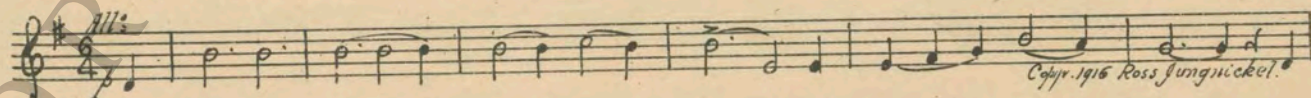
13 (Title) IN THAT CASE ..... Repeat No: 11 "Carabi" ..... 1/2 Min.



14 (Action) WAGON DRIVES OFF ..... Garden Whispers (Herkan) ..... 1 Min.



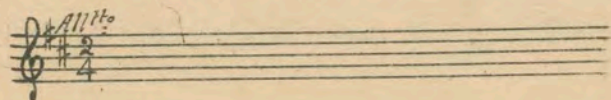
15 (Action) FADE AS SOLDIER AND GIRL GO UP STEPS ..... Dreams of Love (Liszt) ..... 2 Min.



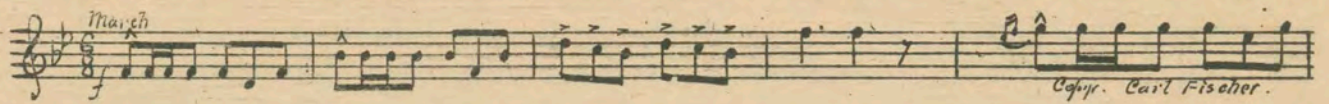
16 (Action) AFTER SOLDIER KISSES GIRL ..... Endearment (Hawthorne). ..... 1 Min.



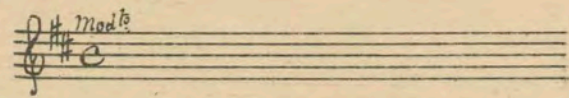
17 (Action) GIRL ENTERS HOUSE ..... Repeat No. 4 (YELLOW) ..... 1/2 Min.



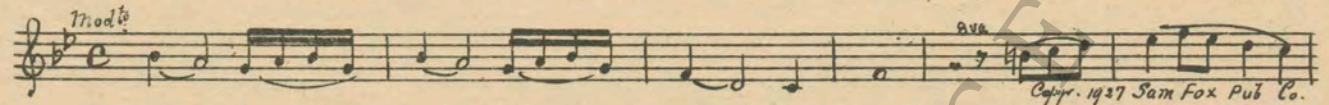
43 (Action) FADE AS GIRL IS READING PART IN PLAY, Marche Lorraine (Ganne) ..... 1 1/4 Min.



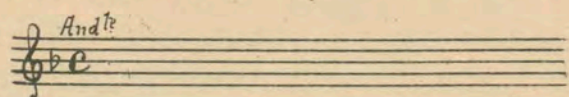
44 (Action) FADE-OUT OF HANDS APPLAUDING ..... Repeat No. 42 "Zareda" ..... 1 1/4 Min.



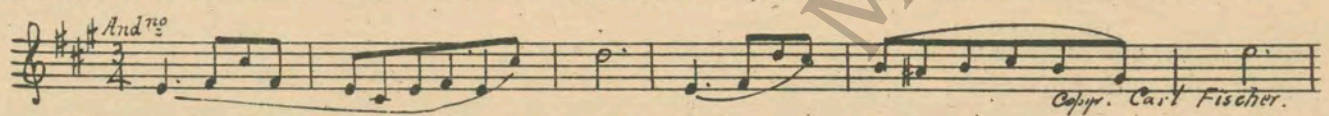
45 (Title) I'LL SEE IF REHEARSAL IS READY ..... Your Love Is All (Zamecnik) (WHITE) ..... 1 Min.



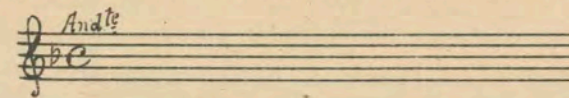
46 (Title) POOR LUCIEN ..... Repeat No. 40 (DK. BLUE) ..... 1/2 Min.



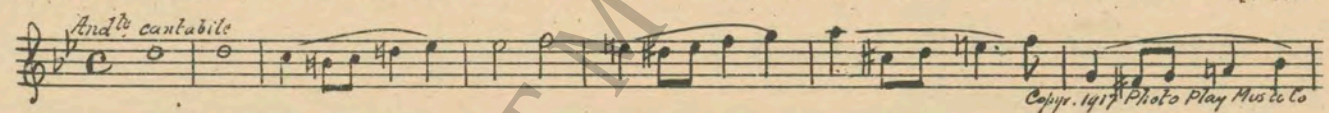
47 (Action) BELL RINGS ..... Sympathy (Mezzacapo) ..... 2 Min.



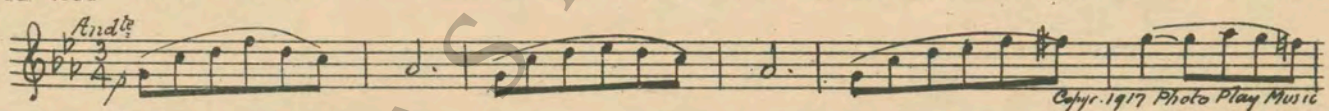
48 (Action) ACTRESS PICKS UP TWO WASH BASKETS.. Repeat No. 40 (DK. BLUE) ..... 3/4 Min.



49 (Action) ACTOR DISMISSED ..... Reverie from "Pathetic Suite" (Luz) ..... 1 Min.



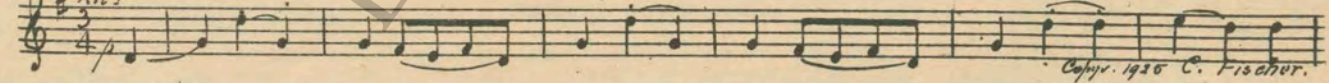
50 (Action) DRESSING ROOM SCENE ..... Elegie from "Pathetic Suite" (Luz) ..... 1 1/2 Min.



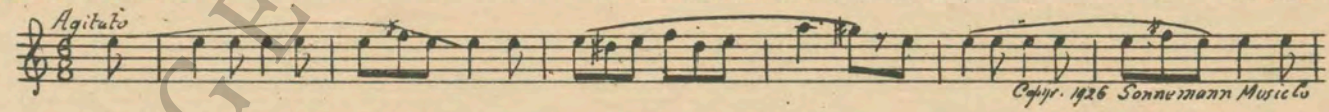
51 (Action) ACTRESS SITS DOWN AT TABLE ..... Repeat No. 42 "Zareda" ..... 3/4 Min.

52 (Action) PRISON SCENE ..... Repeat No. 35 (RED) ..... 1/2 Min.

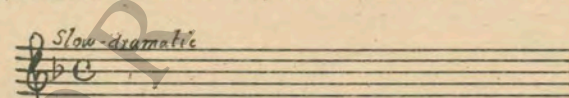
53 (Action) ELECTRIC LIGHTS FLASHED ..... Passe-Pied (Gillet) ..... 1 Min.



54 (Title) TO LA MARIANNE ..... Uneasiness (Mendelssohn) ..... 1 1/4 Min.



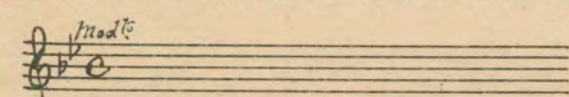
55 (Action) MOTHER LEAVES DRESSING ROOM ..... Repeat No. 35 (RED) ..... 1 Min.



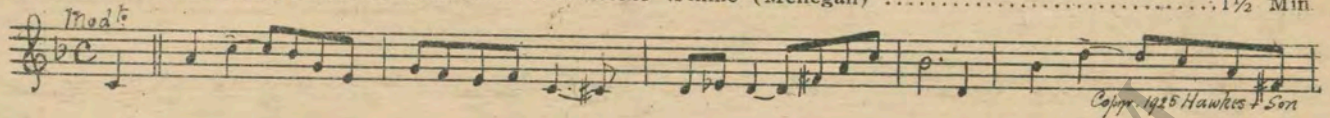
56 (Action) ACTRESS RUNS TO LOVER ..... Serenade passionnee (Heymann) (DK. BLUE) ..... 1/2 Min.



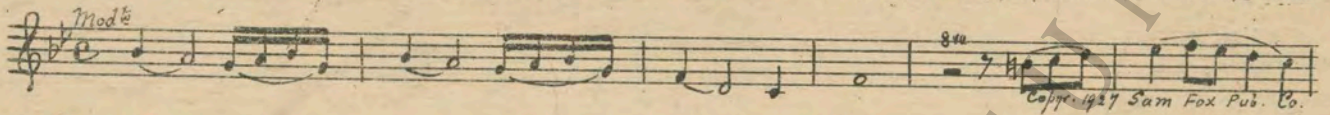
57 (Title) YES, I AM ..... Repeat No. 45 (WHITE) ..... 3/4 Min.



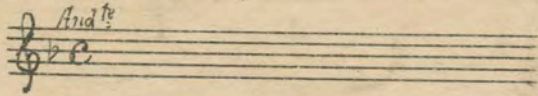
58 (Action) PEOPLE SHOW IN HALL ..... Winsome Winnie (Mehegan) ..... 1½ Min.



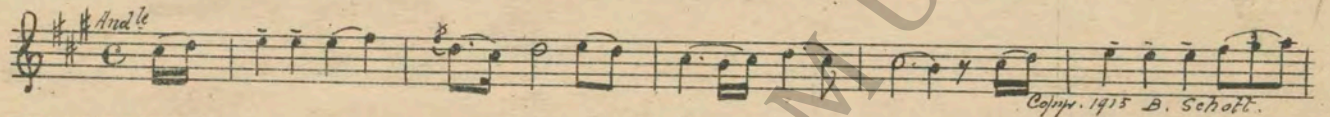
59 (Action) PEOPLE LEAVE ROOM ..... Your Love Is All (Zamecnik) (WHITE) ..... ½ Min.



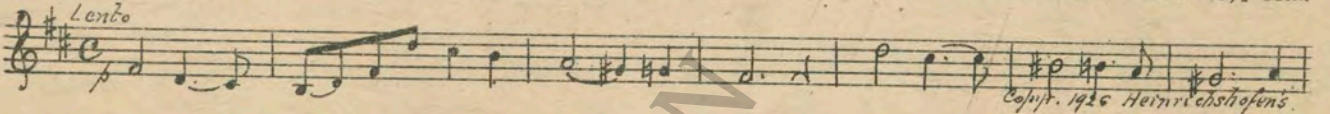
60 (Title) THE LAST ACT ..... Repeat No. 56 (DK. BLUE) ..... 1¼ Min.



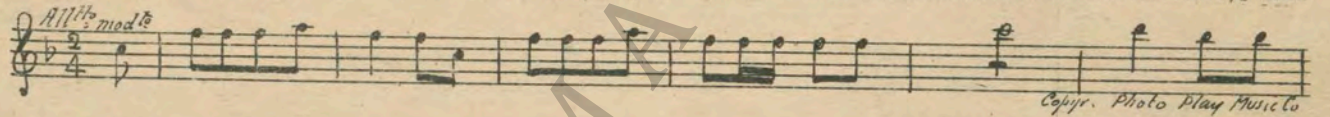
61 (Action) DOOR OPENS ..... Canto Amoroso (Samartini-Elman) ..... 1¾ Min.



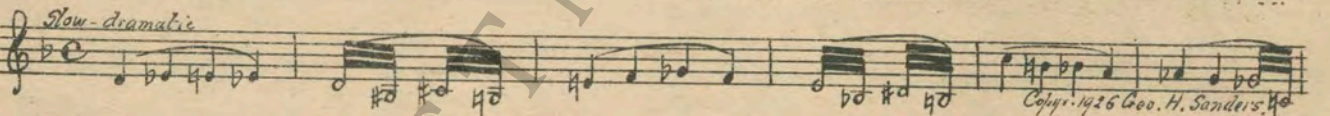
62 (Action) CURTAIN DOWN ..... Lament (Herrmann) ..... 3½ Min.



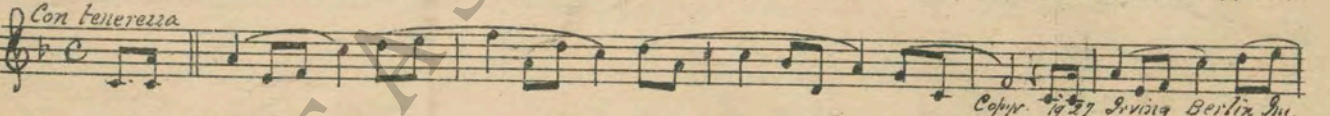
63 (Title) FAME IS A WITCH ..... Carabi (Old French Chant) ..... 1½ Min.



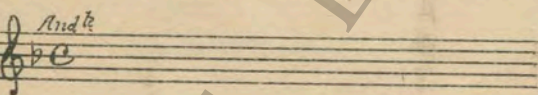
64 (Action) VISION OF LOVER IN HALL ..... Mystic Romance (Srawley) (RED) ..... ¾ Min.



65 (Action) NEWSPAPER ARTICLE ON SCREEN ..... Lovers Meeting (Kempinski) ..... ¾ Min.



66 (Title) WON'T YOU GO FOR ME ..... Repeat No. 56 (DK. BLUE) ..... ¾ Min.



67 (Title) YOU'RE GOING TO LIVE ..... Your Love Is All (Zamecnik) (WHITE) ..... 1 Min.



NOTE: Play lighter for farm scene.

THE END

Proper rest period is Nos. 20 to 33 inclusive.

NOTE: The repetition of numbers in this cue sheet is simplified by the use of the "LUZ" SYMPHONIC COLOR GUIDE, sold by Music Buyers Corporation, 1520 Broadway, New York City. The color suggested for repetition of numbers designates the Mood or Emotion, and is used as a code for such repetitions.

"Serenade passionnee" (DK. BLUE) should always begin at 5th bar and played Appassionato—instruments play all small notes. No. 11 "Carabi" must be played in four beats to bar Moderato tempo to fit "Ron, Ton, Ton"—words on screen. Country of Origin, U. S. A.

Complete orchestrations and single piano parts of each separate number contained hereon, can be purchased from CAMKO MUSIC SERVICE CORPORATION, 316-317 WEST 4TH STREET, NEW YORK CITY.