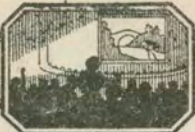


Thursday May 5/27

Two Themes

Thematic Music



Cue Sheet

M. J. MINTZ (PATENT)
JULY 31, 1923

John C. Flinn
presents

"THE HEART THIEF"

with
JOSEPH SCHILDKRAUT, LYA de PUTTI and Robert Edeson

From Lajo's Biro's play "The Highway Man"

Translated by James Burrell and adapted by Gladys Unger

Continuity by Sonya Levien

Directed by Nils Olaf Chrisander

Produced by Metropolitan Pictures Corporation

Compiled by Rudolph Berliner

Released by

PRODUCERS DISTRIBUTING CORPORATION

- 1. AT SCREENING Hajnalka (Roberts) 3/4 Min.

Coppelia

copyright 1916 Carl Fischer

- 2. (Title) ONE SHOULD THINK TWICE ~~LOVE THEME~~ Magic Love (Bradford) 1 Min.

Valsalento

copyright 1925 Sam Fox

- 3. (Action) ANNA OPENS DOOR—SEES OTHER GIRL Disillusioned (Srawley) 3/4 Min.

Andte Modte

copyright 1926 by Geo. H. Sanders

- 4. (Title) OLD AS THE 2nd Hungarian Fantasia (Tobani) 3/4 Min.

Chardas

copyright 1909 Carl Fischer

- 5. (Action) PROCESSION SEEN—LEAD BY TRUMPETERS La Reine de Saba (Gounod) 3/4 Min.

Tempo di marcia

copyright Carl Fischer

- 6. (Action) FRANZ AND MEN SEEN IN ROOM The Gypsy Baron (Strauss) 1 Min.

Allte Maestoso

copyright 1922 Carl Fischer

- 7. (Action) FLASH (ANNA KARENA) Repeat No. 5 "La Reine de Saba" 1 1/2 Min.

Tempo di marcia

- 8. (Title) ALONE Dram. Tension No 36 (Andino) 1 Min.

Modte

copyright 1917 by Belwin Inc.

- 9. (Title) LAZLO, FRANZ'S YOUNGER BROTHER Cat and Mice (Leonard) 1 1/4 Min.

Allte non troppo

copyright 1926 G. Schirmer

- 10. (Action) FRANZ AND ANNA ALONE IN ROOM Appassionato No 3 (Axt) 1 3/4 Min.

Allte Modte

copyright 1926 Robbins Engel

MUSEUM

11. (Title) IF YOU WILL MARRY ME Vision d'Amour (Friml) 1 1/4 Min.

Chant Erotique
 Musical notation for 'IF YOU WILL MARRY ME' in G major, 2/4 time, marked 'Mod.'.
copyr. & Schirmer.

12. (Action) PEOPLE SEEN DANCING Oh! Women, Women (Lehar) 1 1/4 Min.

Merry Widows
 Musical notation for 'PEOPLE SEEN DANCING' in G major, 2/4 time, marked 'Tempo di marcia'.
copyr. 1907 Carl Fischer.

13. (Action) ANNA ALONE AT STAIRCASE Moonlight Memories (Edwards) 1 Min.

One Little Dream of Love
 Musical notation for 'ANNA ALONE AT STAIRCASE' in G major, 2/4 time, marked 'Mod.'.
copyr. 1926 Robbins Engel.

14. (Action) FRANZ SEEN AT TABLE Whispers (Dean) 3/4 Min.

Whispers
 Musical notation for 'FRANZ SEEN AT TABLE' in G major, 2/4 time, marked 'And'.

15. (Action) MOTOR CAR SEEN OUTSIDE The Mischief Makers (Carbonara) 1 Min.

Potatoe Bug
 Musical notation for 'MOTOR CAR SEEN OUTSIDE' in G major, 2/4 time, marked 'Con Vivo'.

16. (Title) ALL HIS LIFE ERIC THEME: Gypsy Baron (Strauss) 1 1/4 Min.

Eric Theme
 Musical notation for 'ALL HIS LIFE' in G major, 2/4 time, marked 'Valse'.

17. (Title) PLAY MY HAND The Joker (Srawley) 3/4 Min.

The Joker
 Musical notation for 'PLAY MY HAND' in G major, 2/4 time, marked 'March'.

18. (Action) SWORD DUEL STARTS Fury (Zamecnik) 1 1/2 Min.

Fury
 Musical notation for 'SWORD DUEL STARTS' in G major, 2/4 time, marked 'Alleg. Fugato'.

19. (Action) LAZLO AND ERIC LEAVE IN MOTOR CAR... Repeat No. 9 "Cat and Mice" 1 1/2 Min.

Recurrent Comedy Theme
 Musical notation for 'LAZLO AND ERIC LEAVE IN MOTOR CAR' in G major, 2/4 time, marked 'Alleg. non troppo'.

20. (Action) PEOPLE SEEN DANCING The Son of the Puszta (Keler Bela) 3/4 Min.

Dung Dance
 Musical notation for 'PEOPLE SEEN DANCING' in G major, 2/4 time, marked 'Alleg.'.

21. (Action) ANNA STARTS DANCING Hajnalka (Roberts) 3/4 Min.

Hajnalka
 Musical notation for 'ANNA STARTS DANCING' in G major, 2/4 time, marked 'Alleg.'.

22. (Action) MOTOR CAR ARRIVES Repeat Eric Theme No. 16 1 1/4 Min.

Eric Theme
 Musical notation for 'MOTOR CAR ARRIVES' in G major, 2/4 time, marked 'Valse'.

23. (Action) ANNA SEEN ALONE IN GARDEN Melodie (Rachmaninoff) 1 Min.

Melodie
 Musical notation for 'ANNA SEEN ALONE IN GARDEN' in G major, 2/4 time, marked 'And. mod.'.

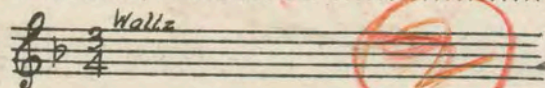
24. (Title) BEAUTIFUL Lovely Lady (Rupp) 3/4 Min.

First Love
 Musical notation for 'BEAUTIFUL' in G major, 2/4 time, marked 'Waltz'.

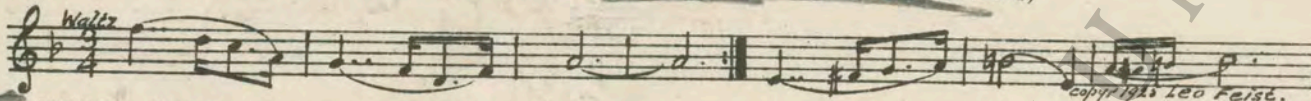
25. (Title) THIS IS MY WIFE Cupid's Conquest (Kahn) 1 Min.

Marmalade Caprice
 Musical notation for 'THIS IS MY WIFE' in G major, 2/4 time, marked 'Alleg.'.

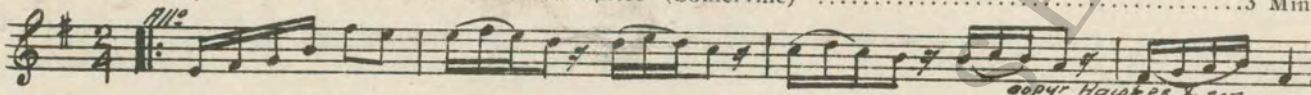
26. (Title) BEAUTIFUL, BEAUTIFUL Repeat No. 24 "Lovely Lady" 1 1/4 Min.



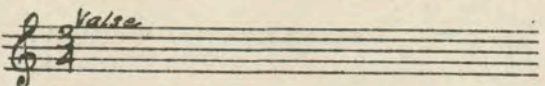
NOTE: At Title "Anna Karenina" stop short and segue
SECUE. LOVE THEME - Magic Love (Bradford)



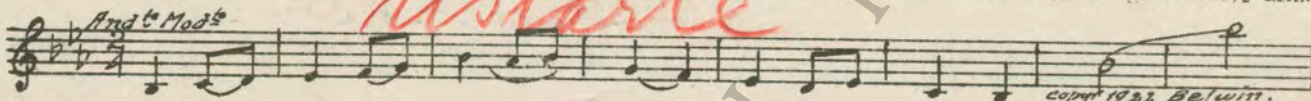
27. (Title) COUNT FRANZ Caprice (Somerville) 3 Min.



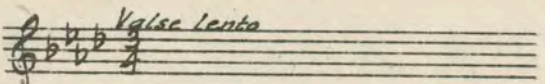
28. (Title) THIS IS YOUR OPPORTUNITY Repeat Eric Theme No. 16 1 1/4 Min.



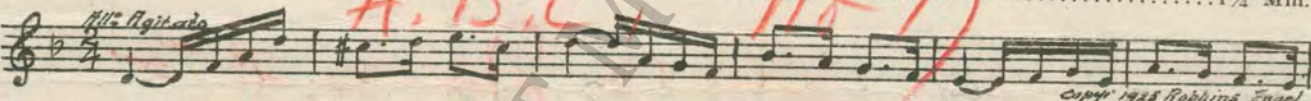
29. (Action) ANNA SEEN IN ROOM Falling Rose Leaves (Sanders) 1/2 Min.



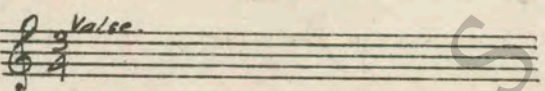
30. (Action) ERIC TAKES ANNA'S HAND Repeat Love Theme No. 2 1 1/4 Min.



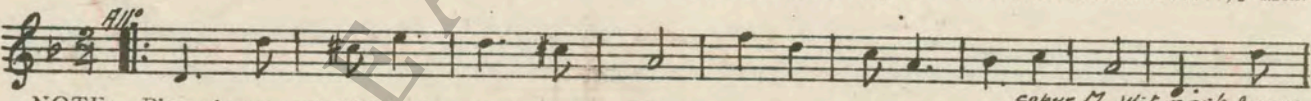
31. (Action) VICTOR INTERRUPTS KISS Minor Agitato (Berge) 1 1/4 Min.



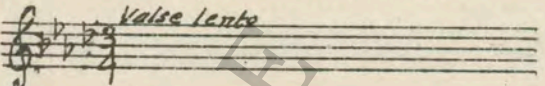
32. (Title) YOU DO WELL Repeat Eric Theme No. 16 1 1/4 Min.



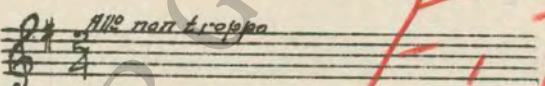
33. (Action) MUSICIANS SEEN PLAYING The Fortune Teller (Herbert) 1/2 Min.



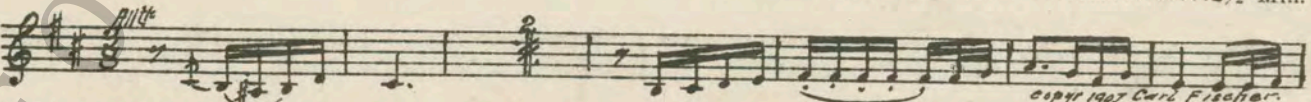
34. (Action) MUSICIANS PLAYING AGAIN Repeat Love Theme No. 2 2 1/4 Min



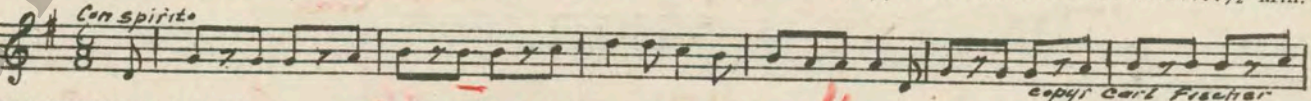
35. (Action) LAZLO SEEN AFTER ERIC LEAVES ANNA... Repeat No 9 "Cat and Mice" 2 Min.



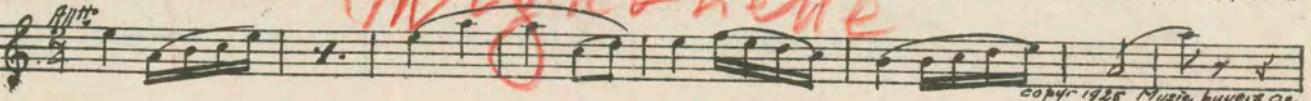
36. (Action) FRANZ SEEN Air de Ballet (Massenet) 2 1/2 Min.



37. (Action) HUNTERS ARRIVE OUTSIDE Hunting Scene (Bucalossi) 1/2 Min.



38. (Action) ANNA SEEN IN ROOM Dreamy Moments (Marquardt) 3/4 Min.



39. (Action) VICTOR SEEN AT WINDOW Trembling Agitato (Kilenyi) 2¼ Min.

Musical notation for item 39. Includes tempo marking *All: Agitato* and handwritten red notes "Agitato" and "10".

40. (Action) VICTOR LEAVES THROUGH WINDOW Tragic Andante (Savino) 2¼ Min.

Musical notation for item 40. Includes tempo marking *Andte* and handwritten red notes "Tragic Andante" and "24".

41. (Action) ANNA STARTS DOWNSTAIRS Dram. Andante No. 1 (Rapee-Axt) 2 Min.

Musical notation for item 41. Includes tempo marking *Sost.* and handwritten red notes "Dram. Andante" and "24".

42. (Title) AND YOU ASK ME Repeat Love Theme No. 2 1¾ Min.

Musical notation for item 42. Includes tempo marking *Valse Lento* and a circled red number "2".

43. (Action) SHE POINTS GUN AT HIM Turmoil (Brunelli) 1¼ Min.

Musical notation for item 43. Includes tempo marking *Modto* and handwritten red notes "Dram Agitato".

44. (Action) ERIC STANDING ALONE AFTER ANNA LEAVES Repeat Love Theme No. 2 ¼ Min.

Musical notation for item 44. Includes tempo marking *Valse Lento* and a circled red number "2".

45. (Action) ANTOINETTE ENTERS Alluring Coquetry (Baron) 1 Min.

Musical notation for item 45. Includes tempo marking *All: Moderato* and handwritten red notes "The Coquette".

46. (Action) HE TURNS LIGHT OFF Allegro Precipitoso (Savino) ½ Min.

Musical notation for item 46. Includes tempo marking *All: Moderato* and handwritten red notes "Agitato" and "3".

47. (Action) FRANZ LAUGHS A Curious Story (Frommel) 1¼ Min.

Musical notation for item 47. Includes tempo marking *All: appiccio* and handwritten red notes "A Curious Story".

48. (Title) I CAME HERE Repeat Love Theme No. 2 ½ Min.

Musical notation for item 48. Includes tempo marking *Valse Lento* and a circled red number "2".

49. (Title) YOU HAVE A QUEER Cupid's Surprise (Gross) 1¼ Min.

Musical notation for item 49. Includes tempo marking *All: Moderato* and handwritten red notes "Cupid's Surprise".

50. (Title) BEAUTIFUL Repeat No. 24 "Lovely Lady" ¼ Min.

Musical notation for item 50. Includes tempo marking *Waltz*.

51. (Action) AFTER ANTOINETTE LEAVES Repeat Love Theme No. 2 1 Min.

Musical notation for item 51. Includes tempo marking *Valse Lento* and a circled red number "2".

THE END

Printed in U. S. A.

Orchestrations or single piano parts of each separate musical selection suggested hereon, can be purchased from CAMEO MUSIC SERVICE CORPORATION, 315-317 WEST 47TH STREET, NEW YORK CITY.

95:1819:3