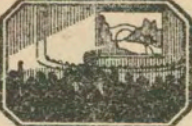


Thematic Music  Cue Sheet

M. J. MINTZ (PATENT)
JULY 31, 1923.

ADOLPH ZUKOR and JESSE L. LASKY
present

ADOLPHE MENJOU
in
"HIS PRIVATE LIFE"

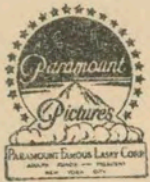
with
KATHRYN CARVER
A Frank Tuttle Production

Story by Ernest Vajda and Keene Thompson

B. P. Schulberg, General Manager, West Coast Productions

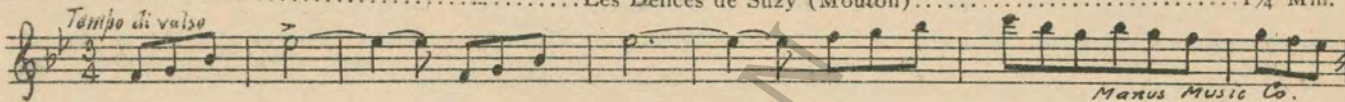
Compiled by James C. Bradford

Footage 4690 feet

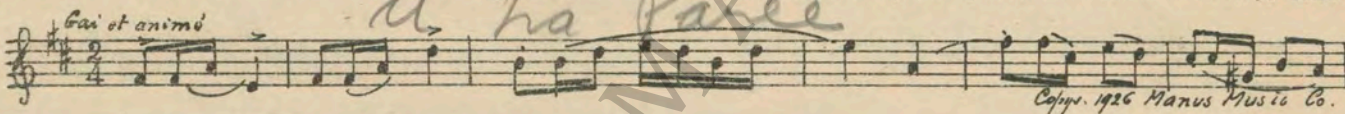


A Paramount Picture

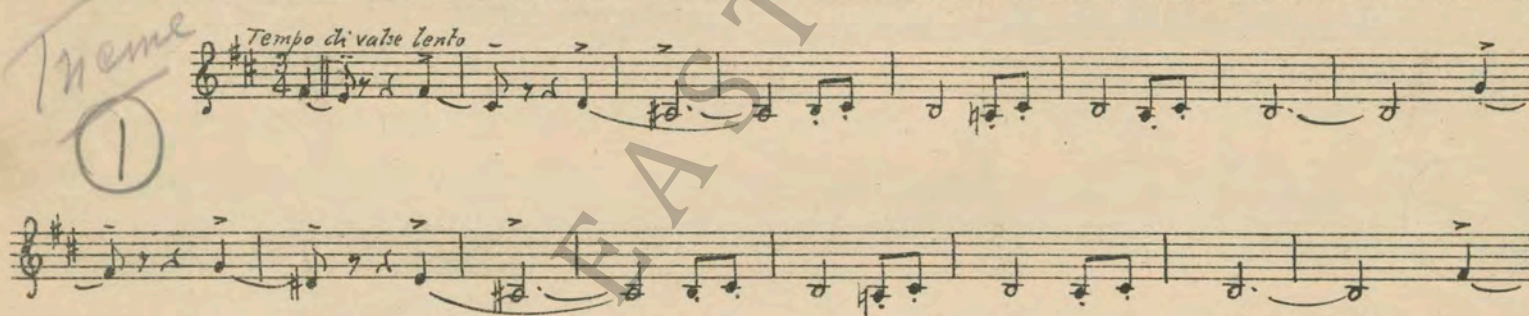
1 AT SCREENING Les Delices de Suzy (Mouton) 1 1/4 Min.



2 (Action) STREET SCENE La Fete du Hameau (Gillet) 2 1/2 Min.



3. (Action) GIRLS' LEGS SEEN YVETTE THEME: Miss Dolly Dollars (Herbert) 3/4 Min.



4 (Action) GEORGES ENTERS CAR Eloement (Carrozzini) 2 Min.



5 (Title) GOOD AFTERNOON Brise du Soir (Gillet) 1 1/4 Min.



Yesterday you tried to present flowers to my wife -

6 (Title) **YESTERDAY YOU TRIED TO PRESENT FLOWERS TO MY WIFE** Hearts and Flowers (Tobani) 1/2 Min.

Mod^{to}

Copyright 1899 Carl Fischer.

7 (Action) **ELEANOR AT DESK** Pour Vous (Krier) 1 Min.

Bien mod^{to}

Manus Music Co.

8 (Action) **YVETTE AND MAID IN BOUDOIR** Repeat Yvette Theme No. 3 3/4 Min.

Theme 1

Tempo di valse lento

Copyright 1915 Carl Fischer.

9 (Title) **MY HUSBAND** Intermezzo (Arensky) 1 1/4 Min.

Presto

Copyright 1915 Carl Fischer.

10 (Action) **HUSBAND SEES GEORGES' PHOTOGRAPH** Marche Mignonne (Poldini) 1 Min.

Leggiero

Copyright 1920 G. Schirmer.

11 (Action) **GEORGES FLIRTING WITH ELEANOR IN LOBBY** By the Stream (Rapee-Axt) 2 3/4 Min.

All^o mod^{to}

Copyright 1924 Robbins Music Corp.

12 (Title) **IS THAT LADY LIVING** ELEANOR THEME: When Love Comes Stealing (Rapee) 2 Min.

2

Lento

Copyright 1923 Robbins Music Corp.

Copyright 1923 Robbins Music Corp.

13 (Action) **GEORGES PICKS UP TELEPHONE** Chatter (Kahn) 1 1/4 Min.

T^o rubato

Copyright 1926 Saxmann Music Co.

14. (Action) STRANGE MAN PICKS UP RECEIVER Gigue (Bradford) 1/2 Min.

Handwritten: *Vivace*
Musical notation for Gigue (Bradford). Copyright 1927 Robbins Music Corp.

15 (Action) EXPRESS MAN APPEARS Molto Leggero (Mouton) 3/4 Min.

Handwritten: *Allegro mod.to*, *Lightest Tale*
Musical notation for Molto Leggero (Mouton). Manus Music Co.

16 (Action) KNOCK ON DOOR Spring Cleaning (Bradford) 1 1/4 Min.

Handwritten: *All. non troppo*, *Summer*
Musical notation for Spring Cleaning (Bradford). Copyright 1928 Carl Fischer.

17 (Action) GEORGES SEES ELEANOR Serenade a Colombine (Benoit) 2 3/4 Min.

Handwritten: *mod.to*, *Mystic Beauty*
Musical notation for Serenade a Colombine (Benoit). Copyright 1926 Manus Music Co.

18 (Action) AFTER KISS Repeat Eleanor Theme No. 12 1 1/2 Min.

Handwritten: *Valse lento*
Musical notation for Repeat Eleanor Theme No. 12. Includes circled number 2.

19 (Action) ELEANOR RISES FROM TABLE Drollery (Kilenyi) 3/4 Min.

Handwritten: *Vivace*
Musical notation for Drollery (Kilenyi). Copyright 1926 Carl Fischer.

20 (Title) THE "DOG WATCH" Aubade Printaniere (Lacombe) 3/4 Min.

Handwritten: *All. ff*
Musical notation for Aubade Printaniere (Lacombe). Copyright Carl Fischer.

21 (Action) ELEANOR GIVING INSTRUCTIONS TO MAID Nice-Excentric (Callemien) 1 1/2 Min.

Handwritten: *All. mod.to*
Musical notation for Nice-Excentric (Callemien). Manus Music Co.

22 (Action) LEAVE IN TAXI Flick and Flock (Patou) 3/4 Min.

Handwritten: *All. ff*, *8va*
Musical notation for Flick and Flock (Patou). Copyright 1925 Hawkes & Son.

23 (Action) GEORGES TAKES SEAT Repeat Eleanor Theme No. 12 1 Min.

Handwritten: *Valse lento*
Musical notation for Repeat Eleanor Theme No. 12. Includes circled number 2.

24 (Action) INSERT - HOTEL SIGN The First Kiss (Robinson) 1/2 Min.

Handwritten: *Valse*, *- Valse Ballet -*
Musical notation for The First Kiss (Robinson). Copyright 1928 Waterston, Berlin & Snyder.

Handwritten: *Eleanor Enters*

25 (Action) ELEANOR ENTERS La Paloma (Yradier) 3½ Min.

Musical notation for "La Paloma" in G major, 2/4 time, marked "All: Mod". Copyright 1911 Carl Fischer.

26 (Action) ELEANOR SEES GEORGES Repeat Eleanor Theme No. 12 ¾ Min.

Musical notation for "Eleanor Sees Georges" in G major, 2/4 time, marked "Valse lento". Includes a circled number "2".

27 (Action) MAN STOPS MUSIC Chanson Naive (Tellam) 1¼ Min.

Musical notation for "Chanson Naive" in G major, 2/4 time, marked "All: mf". Includes handwritten "Novelleta". Copyright Manus Music Co.

28 (Title) YOU HAVE PLAYED THIS GAME Adventure d'Amour (Bradford) 2 Min.

Musical notation for "Adventure d'Amour" in G major, 2/4 time, marked "All: 1". Includes handwritten "Serenade" and "Duo". Copyright 1927 Robbins Music Corp.

29 (Action) AFTER FADE-OUT Babillage (Gillet) 1½ Min.

Musical notation for "Babillage" in G major, 2/4 time, marked "All: mf". Includes handwritten "Pastorale". Copyright 1889 Carl Fischer.

30 (Title) GEORGES, AT LAST YOU'VE ASKED Repeat Yvette Theme No. 3 2 Min.

Musical notation for "Georges, at last you've asked" in G major, 2/4 time, marked "Tempo di valse lento". Includes a circled number "1".

31 (Title) AH! WILL MEN FIGHT SO EASILY Scherzando Hurry (Frey) 3½ Min.

Musical notation for "Scherzando Hurry" in G major, 2/4 time, marked "Scherzando". Copyright 1925 Robbins Music Corp.

32 (Action) YVETTE APPEARS IN DOORWAY Repeat Yvette Theme No. 3 1¼ Min.

Musical notation for "Yvette Appears in Doorway" in G major, 2/4 time, marked "Tempo di valse lento". Includes a circled number "1".

33 (Action) YVETTE AND HUSBAND LEAVE ROOM Repeat Eleanor Theme No. 12 ½ Min.

Musical notation for "Yvette and Husband Leave Room" in G major, 2/4 time, marked "Valse lento". Includes a circled number "2".

THE END

Country of Origin, U. S. A.

Complete orchestrations and single piano parts of each separate number contained hereon, can be purchased from CAMEO MUSIC SERVICE CORPORATION, 315-317 WEST 47TH STREET, NEW YORK CITY.

95:1903:2