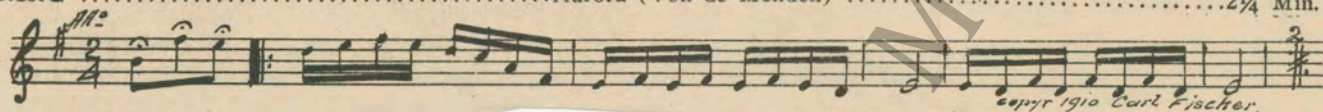


M. J. MINTZ (PATENT)  
JULY 31, 1923

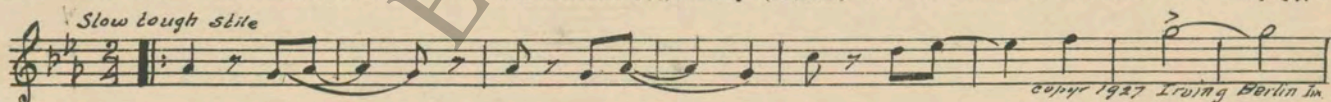
C. C. Burr  
presents  
**JOHNNY HINES**  
in  
**"HOME MADE"**  
Directed by Charles Hines  
Compiled by James C. Bradford  
A First National Picture

1 AT SCREENING ..... Aurora (Von de Mehden) ..... 2¼ Min.

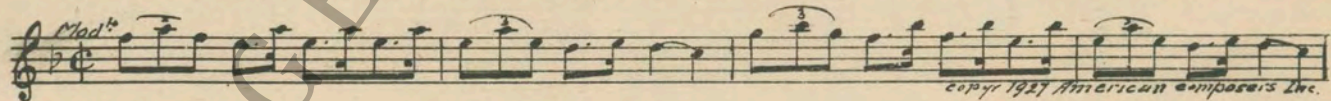


2 (Action) JOHNNY OPENS ENVELOPE

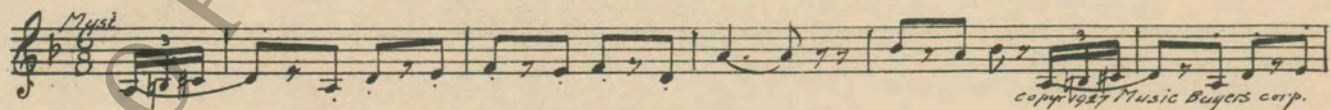
3 (Title) JOHNNY'S STEPFATHER ..... Kowboy Komedj (Aborn) ..... 2¾ Min.



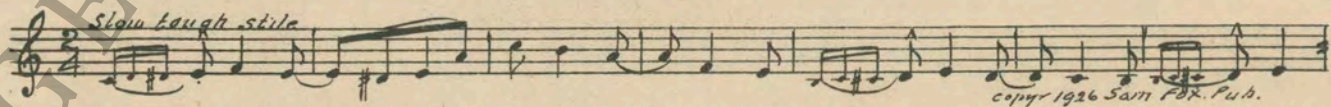
4 (Title) A STEPFATHER'S ORDER ..... Jack In the Box (Bierman) ..... 1 Min.



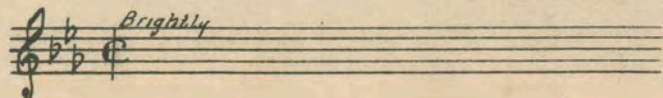
5 (Action) FATHER AT RADIO ..... The Midnight Parade (Marquardt) ..... 1½ Min.



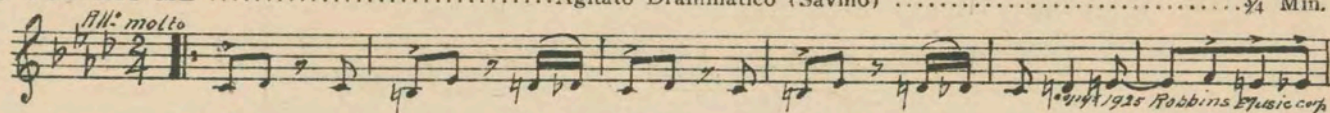
6 (Title) MIDNIGHT—THE SWITCHING HOUR ..... Illusions (Ring-Hager) ..... ¾ Min.



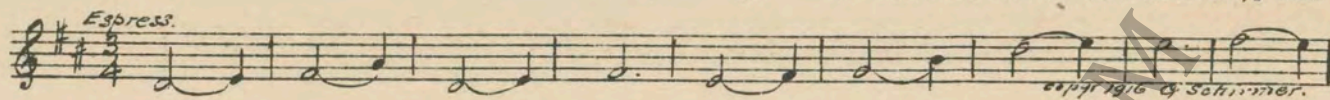
7 (Action) JOHNNY DRIVES UP WITH FRIENDS ..... Repeat Johnny Theme No. 2 ..... ½ Min.



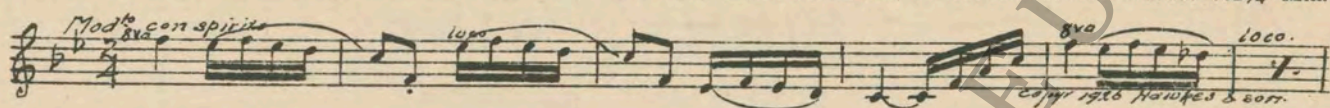
8 (Title) IF YOU HIT ME ..... Agitato Drammatico (Savino) ..... ¾ Min.



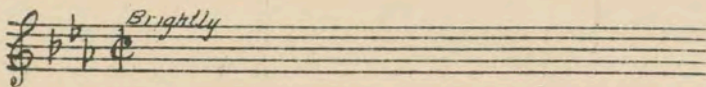
9 (Title) IT'S EASY TO LEAVE ..... Mother (Romberg) ..... ½ Min.



10 (Title) THE STATION WAS CLOSED ..... Love's Enchantment (Brookes) ..... 2¾ Min.



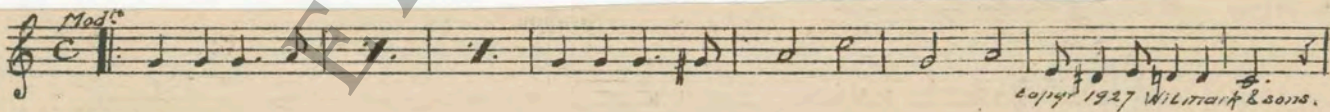
11 (Title) MAKE UP DRAWING ROOM A ..... Repeat Johnny Theme No. 2 ..... 2½ Min.



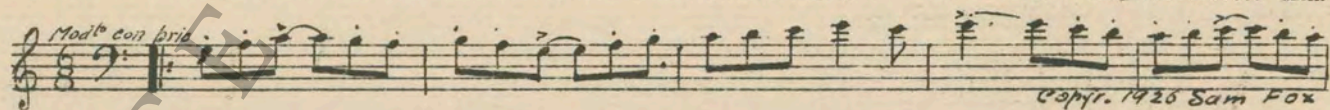
12 (Action) MEN'S WASHROOM ..... Out West (Pinard) ..... 2¾ Min.



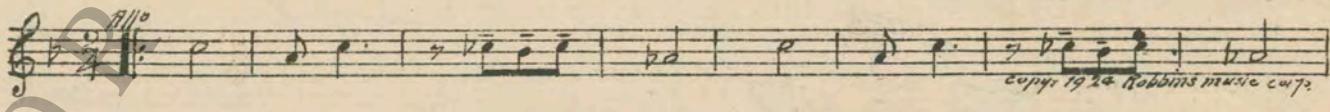
17 (Title) A BIG CITY ..... Funny Faces (Ring-Hager) ..... 1 Min.



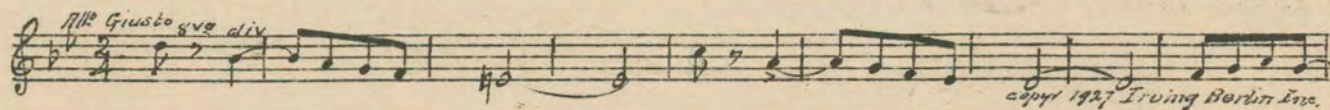
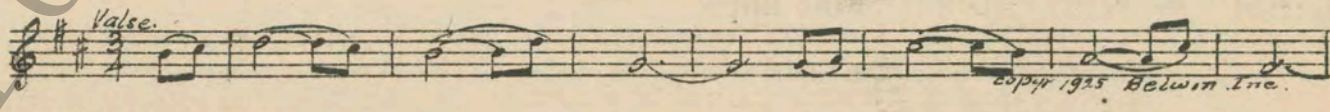
18 (Title) AS A WAITER ..... Oh Mister (Frey) ..... 2 Min.



19 (Action) MR. TILFORD IN ROOM ..... Quelques Fleurs (Baron) ..... 1 Min.



20 (Action) JOHNNY ENTERS ROOM ..... Pins and Needles (Kaufman) ..... 1 Min.



21 (Action) JOHNNY TELEPHONES GIRL ..... GIRL THEME: Miss Annabelle Lee (Pollack) ..... ¾ Min.

*Mod<sup>o</sup>*

Copyright 1937 Irving Berlin Inc.

22 (Action) AUNT APPEARS ..... Valse Triste (Vecsey) ..... ½ Min.

*All<sup>o</sup>*

Copyright 1927 Robbins Music Corp.

23 (Action) JOHNNY AND GIRL AT ENTRANCE ..... Repeat Girl Theme No. 21 ..... 1 Min.

24 (Action) JOHNNY ENTERS MUSIC SHOP ..... Repeat Johnny Theme No. 2 ..... 1 Min.

25 (Action) INSERT—"HE ROWED HER UP THE RIVER" ..... He Walked Right In ..... ½ Min.

*Valse Lento.*

26 (Action) RECORD CHANGED ..... Pop Goes the Weasel (Reeg) ..... 1 Min.

*All<sup>o</sup>*

Copyright 1913 Volksworn Bros.

27 (Action) THEY SIT DOWN ..... Ain't We Got Fun (Whiting) ..... 1 ½ Min.

*Jazz*

Copyright 1921 J. H. Remick & Co.

28 (Action) SALESMAN STARTS RECORD ..... I've Been Longing For a Girl Like You (Johnson) ..... ¾ Min.

*Mod<sup>o</sup>*

Copyright 1927 Irving Berlin Inc.

29 (Action) JOHNNY PICKS UP HAT ..... Where Did you Get That Hat? (Sullivan) ..... ¼ Min.

Copyright 1916 F. Harding.

30 (Title) 6 P. M. ..... Ouch (Kaufman) ..... 1 Min.

*All<sup>o</sup> Giusto*

Copyright 1926 Robbins Music Corp.

31 (Action) JOHNNY TELEPHONES GIRL FRIEND ..... Repeat Girl Theme No. 21 ..... ½ Min.

32 (Title) LATER THAT EVENING ..... Repeat Johnny Theme No. 1 ..... 2 Min.

33 (Title) I'VE GOT A GREAT IDEA ..... Some Smoke (Romberg) ..... 1 ¼ Min.

*All<sup>o</sup> Giusto*

Copyright 1923 Jos. W. Stern & Co.

34 (Title) THE TRANS-ATLANTIC FLYER ..... The Aeroplane (Ring-Hager) ..... 3 ¼ Min.

*All<sup>o</sup> VIVO*

Copyright 1926 Sam Fox Pub. Co.

35 (Action) MEN LISTENING IN ON RADIO ..... Shenendoah (Bendel) ..... 1 Min.

Musical notation for item 35, featuring a treble clef, a key signature of one flat, and a 2/4 time signature. The tempo marking is *Mod<sup>o</sup>*. The copyright notice reads "copyr 1906 Sam Fox Pub. Co."

36 (Title) NOW IS A GOOD TIME ..... Perpetuum Mobile (Rapee) ..... 1 3/4 Min.

Musical notation for item 36, featuring a treble clef, a key signature of one flat, and a 2/4 time signature. The tempo marking is *All<sup>o</sup> molto*. The copyright notice reads "copyr 1937 Belwin Inc."

37 (Title) IT'S ALL A JOKE ..... Repeat No. 27 "Ain't We Got Fun" ..... 1 3/4 Min.

Musical notation for item 37, consisting of a treble clef, a key signature of one flat, and a common time signature. The tempo marking is *Jazz*.

38 (Action) GUESTS LEAVING ..... Goodnight Ladies (Adams) ..... 1/2 Min.

Musical notation for item 38, featuring a treble clef, a key signature of one flat, and a 3/4 time signature. The tempo marking is *Valse*. The copyright notice reads "copyr 1914 Volkwein Bros."

39 (Title) I KNOW WHY YOU'RE ANGRY ..... Impression Dramatique (Bradford) ..... 1 Min.

Musical notation for item 39, featuring a treble clef, a key signature of one flat, and a 2/4 time signature. The tempo marking is *All<sup>o</sup> Agitato*. The copyright notice reads "copyr 1927 Robbins music corp"

40 (Title) NEXT DAY FOUND JOHNNY ..... Marionette (Arndt) ..... 1 3/4 Min.

Musical notation for item 40, featuring a treble clef, a key signature of one flat, and a 2/4 time signature. The tempo marking is *All<sup>o</sup>*. The copyright notice reads "copyr 1907 Sam Fox Pub. Co."

41 (Title) WHILE JOHNNY WAS ..... Babillage (Gillet) ..... 1 Min.

Musical notation for item 41, featuring a treble clef, a key signature of one flat, and a common time signature. The tempo marking is *All<sup>o</sup>*. The copyright notice reads "copyr 1889 Carl Fischer."

42 (Action) JOHNNY SLIDES DOWN WALK ..... Whip and Spur (Allen) ..... 1 3/4 Min.

Musical notation for item 42, featuring a treble clef, a key signature of one flat, and a 2/4 time signature. The tempo marking is *Galop*. The copyright notice reads "Pub by Walter Jacobs."

43 (Action) <sup>NOTE: Horses' hoofs effects ad lib.</sup> JOHNNY JUMPS ON TAXI RUNNING BOARD Military Galop (Barthman) ..... 2 Min.

Musical notation for item 43, featuring a treble clef, a key signature of one flat, and a 2/4 time signature. The tempo marking is *Galop*. The copyright notice reads "copyr 1925 Hawkes & son."

44 (Title) GOOD, WE'RE ON TIME ..... End the Day With a Smile (Glogau) ..... 1/2 Min.

Musical notation for item 44, featuring a treble clef, a key signature of one flat, and a common time signature. The tempo marking is *Mod<sup>o</sup>*. The copyright notice reads "copyr 1927 Shapiro Bernstein"

45 (Action) GIRL SPEAKS TO JOHNNY ..... Repeat Johnny Theme No. 2 ..... 1 Min.

Musical notation for item 45, consisting of a treble clef, a key signature of one flat, and a common time signature. The tempo marking is *Very Brightly*.

Printed in U. S. A.

THE END

Complete orchestrations and single piano parts of each separate number contained hereon, can be purchased from CAMEO MUSIC SERVICE CORPORATION, 315-317 WEST 47TH STREET, NEW YORK CITY.