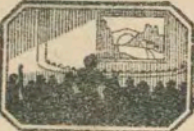


Handwritten: The Arcade
New York 24

Thematic Music  **Cue Sheet**

M. J. MINTZ (PATENT)
JULY 21, 1927

ADOLPH ZUKOR and JESSE L. LASKY
present

ANNE NICHOLS'
"JUST MARRIED"

with
RUTH TAYLOR and JAMES HALL

Lila Lee, Harrison Ford and William Austin

Directed by Frank Strayer

Adaptation and screen play by Frank Butler and Gilbert Pratt

B. P. Schulberg, Associate Producer

Compiled by James C. Bradford

Footage 6039 feet



A Paramount Picture

- 1 AT SCREENING Aurora (Von der Mehden) 1 Min.

All^o

Copyr. 1910 Carl Fischer

- 2 (Title) PARIS Fleurette d'Amour (Fletcher) 1 1/4 Min.

All^o

Copyr. 1922 Hawkes & Son

- 3 (Title) I TOO WAS MARRIED Charmaine (Rapee) 1 Min.

Valse mod^o

Copyr. 1926 Sherman Clays Co

- 4 (Title) VICTORINE, PACK QUICK Intermezzo (Arensky) 1 1/4 Min.

Presto

Copyr. 1915 Carl Fischer

- 5 (Action) PERCY SITS AT DRESSING TABLE Oh Harold (Roberts) 1/2 Min.

mod^o

Copyr. 1923 Forster Mus. P.

- 6 (Title) MY PERCY Spring Cleaning (Bradford) 2 1/2 Min.

All^o non troppo

Copyr. 1928 Carl Fischer

- 7 (Title) MAY I INTRODUCE MYSELF Mam'zette Coquette (Gilmer) 1/2 Min.

All^o non troppo

Copyr. 1921 Bossey & Co

- 8 (Title) THE FIRST OF THE BRIDAL PARTY Rustic Dance (Wick) 1/2 Min.

All^o mod^o

Copyr. 1928 Carl Fischer

- 9 (Action) VICTORINE APPEARS Mon Homme (Yvain) 1/2 Min.

And^{te} pathetique

Copyr. 1920 Leo Felst

10 (Title) TELL MISS ROBERTA Sarabande Perpetuelle (Bradford) 1/2 Min.

Musical notation for 'TELL MISS ROBERTA' in treble clef, 3/4 time, key of D major. The piece is marked 'Allegro' and 'Copr. 1928 Carl Fischer'.

11 (Action) WHARF Mystic Glades (Kempinski) 2 1/4 Min.

Musical notation for 'WHARF' in treble clef, 2/4 time, key of D major. The piece is marked 'Allegro misterioso' and 'Copr. 1927 Irving Berlin Inc.'.

12 (Title) I'M A FELLA NAMED Buffoons (Hadley) 1 1/4 Min.

Musical notation for 'I'M A FELLA NAMED' in treble clef, 6/8 time, key of D major. The piece is marked 'Allegro misterioso' and 'Copr. 1928 Edwin F. Kalmus'.

13 (Action) THEY RECOGNIZE EACH OTHER It Had to Be You (Jones) 3/4 Min.

Musical notation for 'THEY RECOGNIZE EACH OTHER' in treble clef, 2/4 time, key of D major. The piece is marked 'Moderato' and 'Copr. Jerome H. Kern Inc.'.

14 (Title) ARE YOU SAILING ON THIS BOAT? Chianti (Friml) 1 1/2 Min.

Musical notation for 'ARE YOU SAILING ON THIS BOAT?' in treble clef, 2/4 time, key of D major. The piece is marked 'Allegro' and 'mf' and 'Copr. 1918 G. Schirmer'.

15 (Action) VICTORINE APPEARS Repeat No. 3 "Charmaine" 1 Min.

Musical notation for 'VICTORINE APPEARS' in treble clef, 2/4 time, key of D major. The piece is marked 'Repeat No. 3 "Charmaine"'.

16 (Action) GLASS DOORS OF CAFE Where Do We Go from Here? (Wenrich) 1/2 Min.

Musical notation for 'GLASS DOORS OF CAFE' in treble clef, 6/8 time, key of D major. The piece is marked 'Marcia' and 'Copr. Leo Feist, Inc.'.

17 (Action) ROBERTA UNPACKING Flapperette (Greer) 1/2 Min.

Musical notation for 'ROBERTA UNPACKING' in treble clef, 2/4 time, key of D major. The piece is marked 'Fox-Trot' and 'mf' and 'Copr. 1925 Jack Mills Inc.'.

18 (Action) FLASH-BACK TO TWO BOYS Repeat No. 16 "Where Do We Go from Here?" 1 1/4 Min.

Musical notation for 'FLASH-BACK TO TWO BOYS' in treble clef, 6/8 time, key of D major. The piece is marked 'Marcia'.

19 (Title) I MUST SAIL ON THIS BOAT Scherzoso (Friml) 2 Min.

Musical notation for 'I MUST SAIL ON THIS BOAT' in treble clef, 2/4 time, key of D major. The piece is marked 'Moderato Allegro' and 'Copr. 1927 Edwin F. Kalmus'.

20 (Title) HERE'S TICKET Chatter (Kahn) 2 Min.

Musical notation for 'HERE'S TICKET' in treble clef, 2/4 time, key of D major. The piece is marked 'Tempo Rubato' and 'Copr. 1926 Sonnemann Music Co.'.

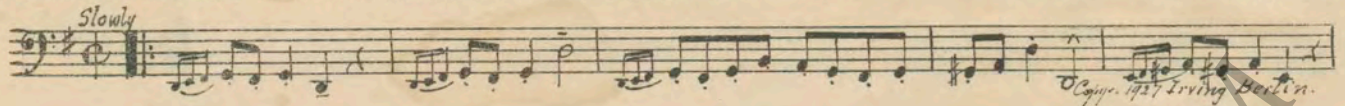
21 (Action) BOB KNOCKS ON DOOR Flocons de Neige (Bradford) 2 1/2 Min.

Musical notation for 'BOB KNOCKS ON DOOR' in treble clef, 2/4 time, key of D major. The piece is marked 'Allegro giocoso' and 'Copr. 1925 Robbins Music Corp.'.

22 (Title) JACK STANLEY, YOU SAID THAT WOMAN... Action Galore (Maiorana) 1 3/4 Min.

Musical notation for 'JACK STANLEY, YOU SAID THAT WOMAN... Action Galore' in treble clef, 2/4 time, key of D major. The piece is marked 'Vivace' and 'Copr. 1928 G. Lipskin & Son'.

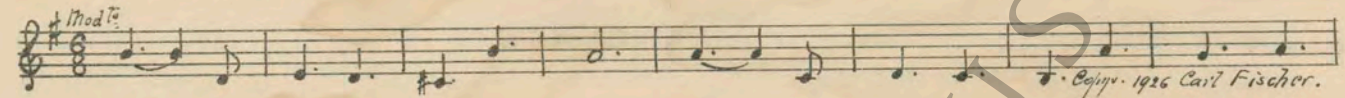
23 (Action) FLASH OF OCEAN The Simpleton (Delille) 1¼ Min.



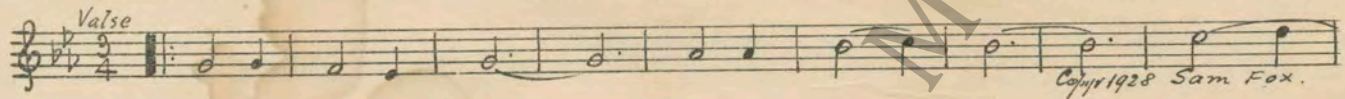
24 (Action) SAILOR BLOWS BUGLE Reveille—Bugle Call ¼ Min.



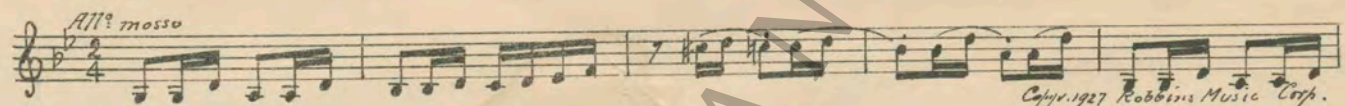
25 (Action) INTERIOR OF STATEROOM Berceuse Comique (Kilenyi) 1¾ Min.



26 (Title) HEY, WHAT'S THE IDEA OF ALL THE WATER Little Irish Rose (Zamecnik) ½ Min.



27 (Action) HE SEES BOUDOIR SLIPPERS ON FLOOR.. The Flight (Savino) 3 Min.



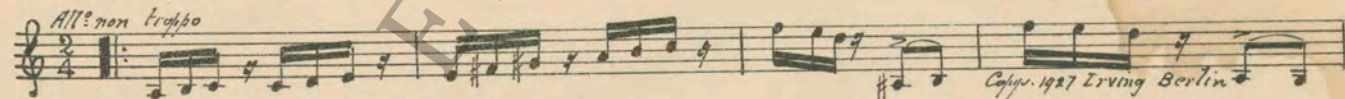
28 (Action) JACK KNOCKS ON DOOR Marionette (Arndt) 2¾ Min.



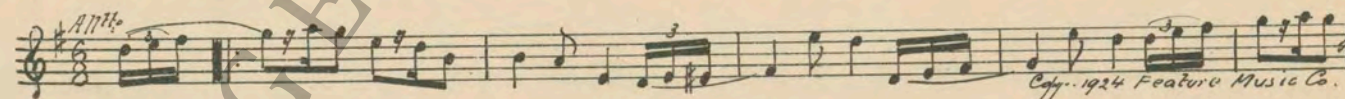
29 (Action) WIFE APPEARS AT DOOR Humoresque (Tschaikowsky) 1 Min.



30 (Title) SO THAT'S YOUR SICK FRIEND Allegro Buffonesco (Kempinski) 3 Min.



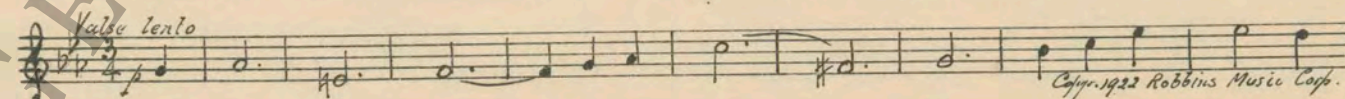
31 (Title) PERCY, I THINK Cupid's Surprise (Gross) 1¾ Min.



32 (Action) VICTORINE APPEARS ON DECK Elopement (Carrozzini) ½ Min.



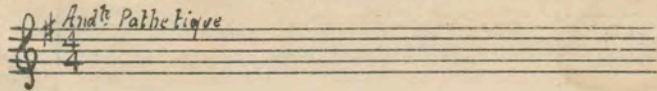
33 (Action) BOB AND ROBERTA If Love Were All (Axt) ½ Min.



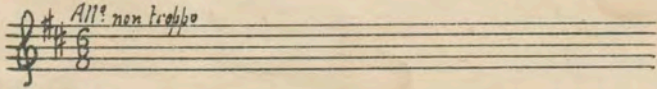
34 (Action) UNCLE APPEARS AT DOOR Gigue (Bradford) 2¾ Min.



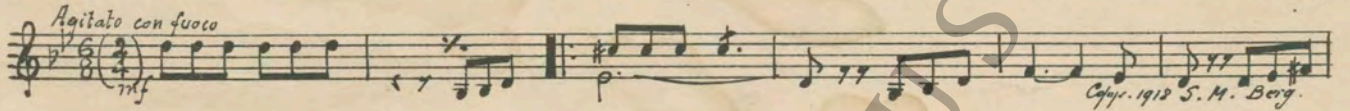
35 (Title) MY CAVALIER Repeat No. 9 "Mon Homme" ¾ Min.



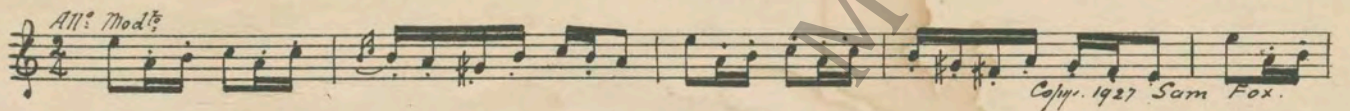
36 (Title) HAVE A GOOD GIGGLE Repeat No. 6 "Spring Cleaning" 1¾ Min.



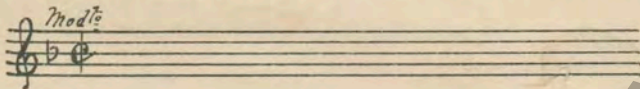
37 (Title) WHO IS THAT WOMAN? Turbulence (Borch) 1 Min.



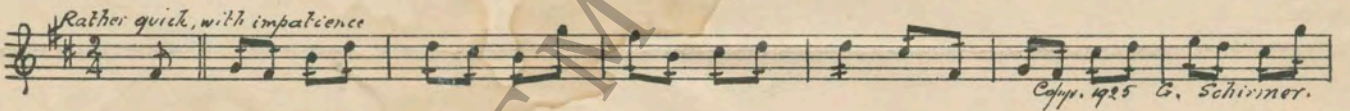
38 (Action) THEY APPEAR ON DECK Rustic Caprice (St. Clair) 1¾ Min.



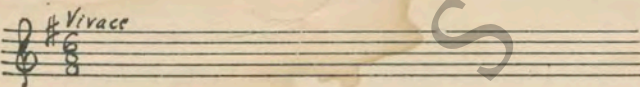
39 (Title) HALT! Repeat No. 5 "Oh Harold" 1 Min.



40 (Title) THERE'S ONLY ONE WAY OUT Restless Bows (Srawley) ½ Min.



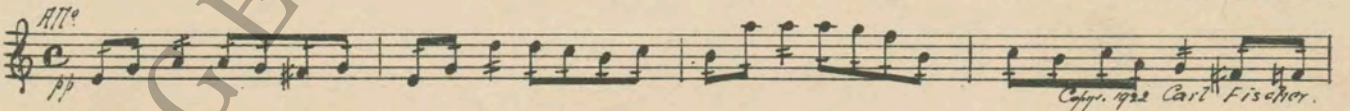
41 (Action) VICTORINE SEES PERCY Repeat No. 34 "Gigue" 3 Min.



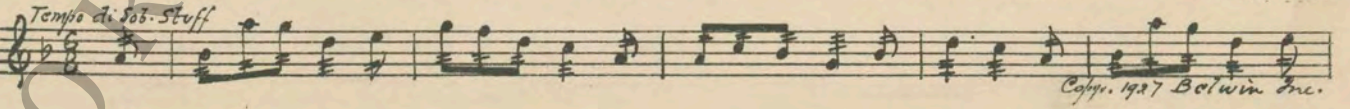
42 (Title) CEASE! DESIST! STOP! Repeat No. 5 "Oh Harold" 1½ Min.



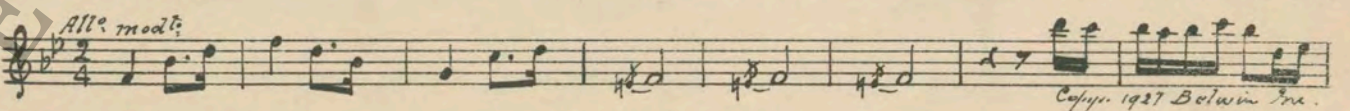
43 (Title) I-I BELIEVE I'M GOING TO Woodland Whispers (Czibulka) 1 Min.



44 (Title) DO YOU TAKE THIS WOMAN Burlesque on Lange's Flower Song (Kempinski) ½ Min.



45 (Action) VICTORINE KISSES PERCY Burlesque on Mendelssohn's Wedding March (Kempinski) ½ Min.



THE END

Country of Origin, U. S. A.

Complete orchestrations and single piano parts of each separate number contained hereon, can be purchased from CAMEO MUSIC SERVICE CORPORATION, 315-317 WEST 47TH STREET, NEW YORK CITY.

95:1964:1