


Thematic Music  Cue Sheet

M. J. MINTZ (PATENT)
JULY 31, 1927

ADOLPH ZUKOR and JESSE L. LASKY
present

ANNE NICHOLS'
"JUST MARRIED"

with
RUTH TAYLOR and JAMES HALL

Lila Lee, Harrison Ford and William Austin

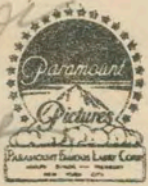
Directed by Frank Strayer

Adaptation and screen play by Frank Butler and Gilbert Pratt

B. P. Schulberg, Associate Producer

Compiled by James C. Bradford

Footage 6039 feet



A Paramount Picture

Valse
dortrot
Valse
Inter
Galop
Fin
Galop
Aband
one step

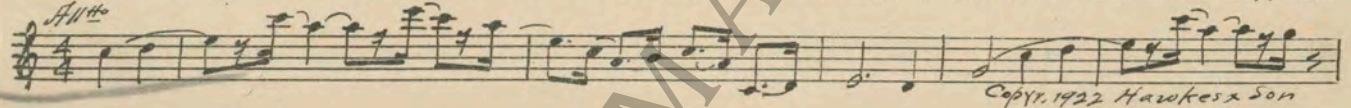
one step

1 AT SCREENING Aurora (Von der Mehden) 1 Min.

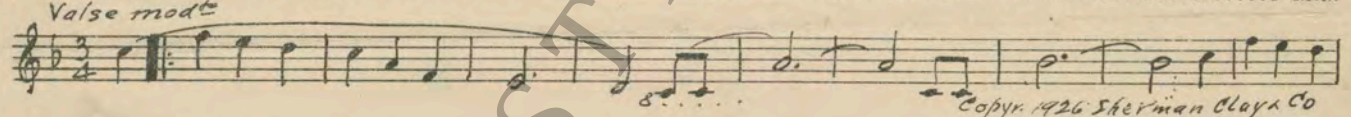
All^o

Copyr. 1910 Carl Fischer

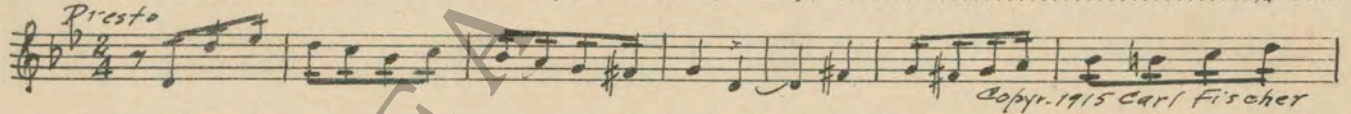
2 (Title) PARIS Fleurette d'Amour (Fletcher) 1 1/4 Min.

All^o

Copyr. 1922 Hawkes & Son

3 (Title) I TOO WAS MARRIED Charmaine (Rapee) 1 Min.

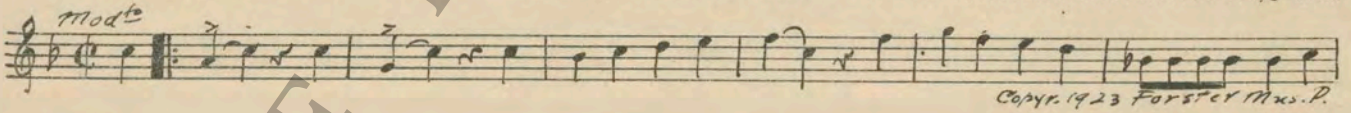
Valse mod^{to}

Copyr. 1926 Sherman Clay Co

4 (Title) VICTORINE, PACK QUICK Intermezzo (Arensky) 1 1/4 Min.

Presto

Copyr. 1915 Carl Fischer

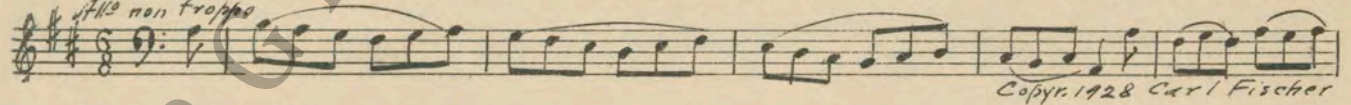
5 (Action) PERCY SITS AT DRESSING TABLE Oh Harold (Roberts) 1/2 Min.

1

mod^{to}

Copyr. 1923 Forster Mus. P.

6 (Title) MY PERCY Spring Cleaning (Bradford) 2 1/2 Min.

2

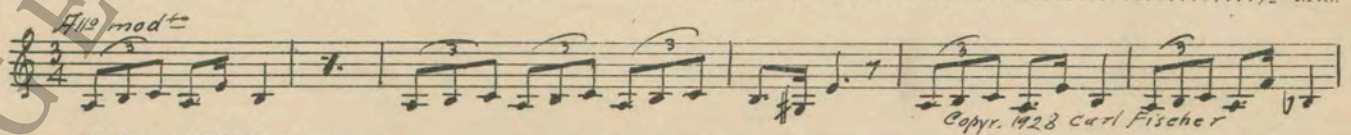
All^o non troppo

Copyr. 1928 Carl Fischer

7 (Title) MAY I INTRODUCE MYSELF Mam'zette Coquette (Gilmer) 1/2 Min.

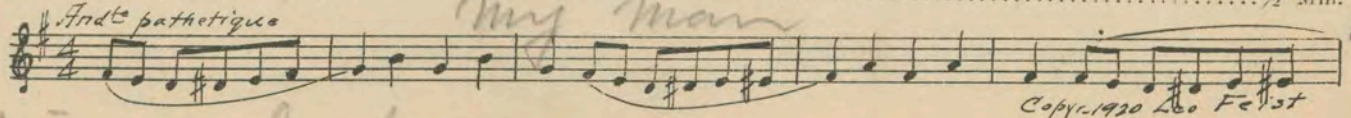
All^o non troppo

Copyr. 1921 Boussey & Co

8 (Title) THE FIRST OF THE BRIDAL PARTY Rustic Dance (Wick) 1/2 Min.

All^o mod^{to}

Copyr. 1928 Carl Fischer

9 (Action) VICTORINE APPEARS Mon Homme (Yvain) 1/2 Min.

Fond^o pathetique
my man

Copyr. 1920 Leo Feist

"Tell Miss Roberta"

10 (Title) TELL MISS ROBERTA Sarabande Perpetuelle (Bradford) ½ Min.

Musical notation for 'TELL MISS ROBERTA' in treble clef, 3/4 time, key of D major. The piece is marked 'And' and 'Sarabande Perpetuelle'. The copyright is 1928 by Carl Fischer.

11 (Action) WHARF Mystic Glades (Kempinski) 2¼ Min.

Musical notation for 'WHARF' in treble clef, 2/4 time, key of D major. The piece is marked 'And misterioso'. The copyright is 1927 by Irving Berlin Inc.

12 (Title) I'M A FELLA NAMED Buffoons (Hadley) 1¼ Min.

Musical notation for 'I'M A FELLA NAMED' in treble clef, 6/8 time, key of B-flat major. The piece is marked 'And misterioso'. The copyright is 1928 by Edwin F. Kalmus.

13 (Action) THEY RECOGNIZE EACH OTHER It Had to Be You (Jones) ¾ Min.

Musical notation for 'THEY RECOGNIZE EACH OTHER' in treble clef, 2/4 time, key of B-flat major. The piece is marked 'Mod.to'. The copyright is by Jerome H. Kernick.

14 (Title) ARE YOU SAILING ON THIS BOAT? Chianti (Friml) 1½ Min.

Musical notation for 'ARE YOU SAILING ON THIS BOAT?' in treble clef, 2/4 time, key of D major. The piece is marked 'Allegro' and 'mf'. The copyright is 1918 by G. Schirmer.

15 (Action) VICTORINE APPEARS Repeat No. 3 "Charmaine" 1 Min.

Musical notation for 'VICTORINE APPEARS' in treble clef, 2/4 time, key of D major. The piece is a repeat of No. 3 'Charmaine'.

16 (Action) GLASS DOORS OF CAFE Where Do We Go from Here? (Wenrich) ½ Min.

Musical notation for 'GLASS DOORS OF CAFE' in treble clef, 6/8 time, key of D major. The piece is marked 'Marcia'. The copyright is by Leo Feist Inc.

17 (Action) ROBERTA UNPACKING NOTE: Catch crash of glass doors. Flapperette (Greer) ½ Min.

Musical notation for 'ROBERTA UNPACKING' in treble clef, 2/4 time, key of D major. The piece is marked 'Fox-Trot' and 'mf'. The copyright is 1925 by Jack Mills Inc.

18 (Action) FLASH-BACK TO TWO BOYS Repeat No. 16 "Where Do We Go from Here?" 1¼ Min.

Musical notation for 'FLASH-BACK TO TWO BOYS' in treble clef, 6/8 time, key of D major. The piece is marked 'Marcia'.

19 (Title) I MUST SAIL ON THIS BOAT Scherzoso (Friml) 2 Min.

Musical notation for 'I MUST SAIL ON THIS BOAT' in treble clef, 2/4 time, key of D major. The piece is marked 'Molto And' and '8va'. The copyright is 1927 by Edwin F. Kalmus.

20 (Title) HERE'S TICKET Chatter (Kahn) 2 Min.

Musical notation for 'HERE'S TICKET' in treble clef, 2/4 time, key of D major. The piece is marked 'Tempo Rubato'. The copyright is 1916 by Sonnemann Music Co.

21 (Action) BOB KNOCKS ON DOOR Flocons de Neige (Bradford) 2½ Min.

Musical notation for 'BOB KNOCKS ON DOOR' in treble clef, 2/4 time, key of D major. The piece is marked 'Allegro'. The copyright is 1925 by Robbins Music Corp.

22 (Title) JACK STANLEY, YOU SAID THAT WOMAN.. Action Galore (Maiorana) 1¾ Min.

Musical notation for 'JACK STANLEY, YOU SAID THAT WOMAN' in treble clef, 2/4 time, key of D major. The piece is marked 'Vivace'. The copyright is 1928 by G. Lipskin & Son.

23 (Action) FLASH OF OCEAN The Simpieton (Delille) 1 1/4 Min.

Slowly
Copyright 1927 Irving Berlin

24 (Action) SAILOR BLOWS BUGLE Reveille—Bugle Call 1/4 Min.

Quick

25 (Action) INTERIOR OF STATEROOM Berceuse Comique (Kilenyi) 1 1/4 Min.

Mod^{to}
Copyright 1916 Carl Fischer

26 (Title) HEY, WHAT'S THE IDEA OF ALL THE WATER Little Irish Rose (Zamecnik) 1/2 Min.

Valse
Copyright 1928 Sam Fox

27 (Action) HE SEES BOUDOIR SLIPPERS ON FLOOR.. The Flight (Savino) 3 Min.

All^o mosso
Copyright 1927 Robbins Music Corp.

28 (Action) JACK KNOCKS ON DOOR Marionette (Arndt) 2 3/4 Min.

All^o gra
Copyright Sam Fox Pub. Co.

29 (Action) WIFE APPEARS AT DOOR Humoresque (Tschaiowsky) 1 Min.

All^o
Copyright 1912 Carl Fischer

30 (Title) SO THAT'S YOUR SICK FRIEND Allegro Buffonesco (Kempinski) 3 Min.

All^o non troppo
Copyright 1927 Irving Berlin

31 (Title) PERCY, I THINK Cupid's Surprise (Gross) 1 3/4 Min.

All^o
Copyright 1924 Feature Music Co.

32 (Action) VICTORINE APPEARS ON DECK Elopement (Carrozzini) 1/2 Min.

Vivace
Copyright 1926 Sonneermann Music Co.

33 (Action) BOB AND ROBERTA If Love Were All (Axt) 1/2 Min.

Valse lento
Copyright 1922 Robbins Music Corp.

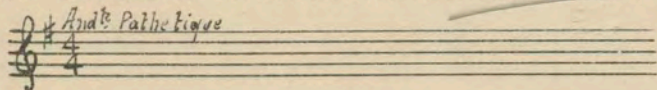
34 (Action) UNCLE APPEARS AT DOOR Gigue (Bradford) 2 3/4 Min.

Vivace
Copyright 1927 Robbins Music Corp.

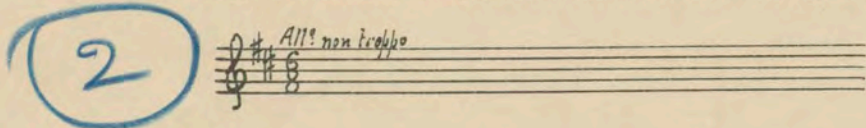
2

My Cavalier

35 (Title) MY CAVALIER Repeat No. 9 "Mon Homme" ¾ Min.



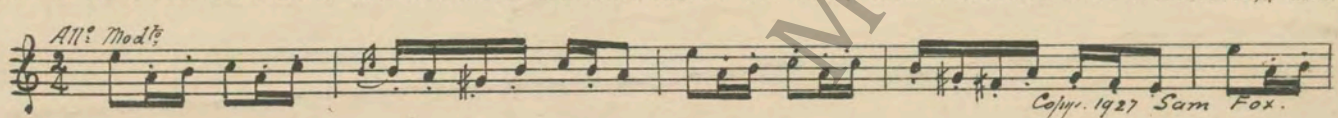
36 (Title) HAVE A GOOD GIGGLE Repeat No. 6 "Spring Cleaning" 1¾ Min.



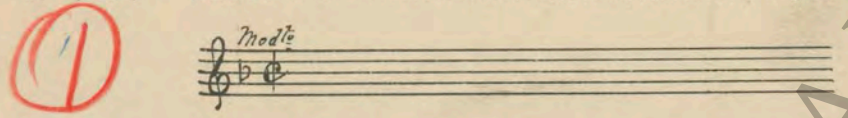
37 (Title) WHO IS THAT WOMAN? Turbulence (Borch) 1 Min.



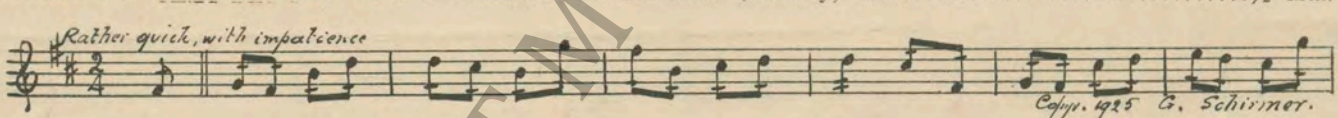
38 (Action) THEY APPEAR ON DECK Rustic Caprice (St. Clair) 1¾ Min.



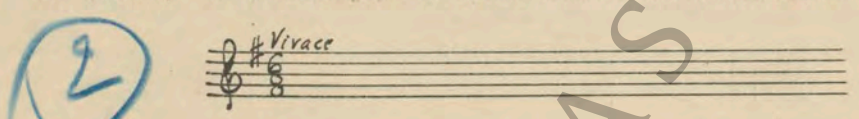
39 (Title) HALT! Repeat No. 5 "Oh Harold" 1 Min.



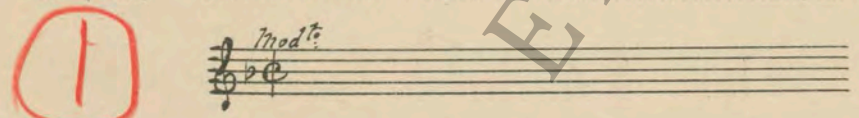
40 (Title) THERE'S ONLY ONE WAY OUT Restless Bows (Srawley) ½ Min.



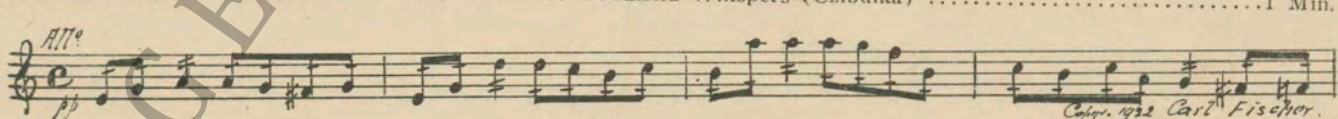
41 (Action) VICTORINE SEES PERCY Repeat No. 34 "Gigue" 3 Min.



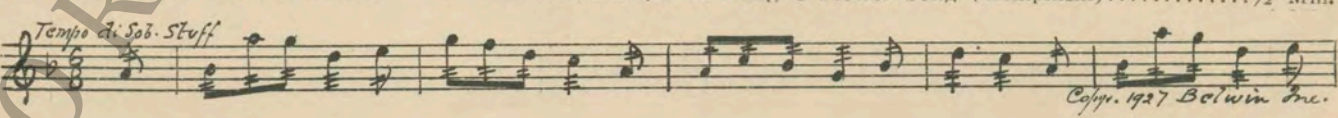
42 (Title) CEASE! DESIST! STOP! Repeat No. 5 "Oh Harold" 1½ Min.



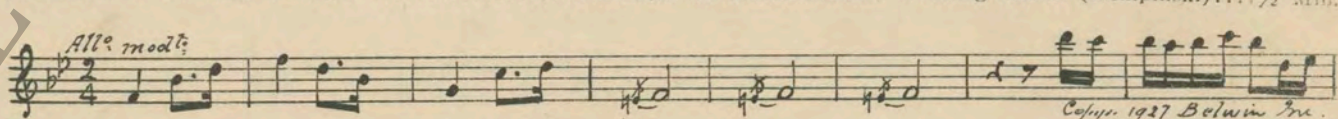
43 (Title) I-I BELIEVE I'M GOING TO Woodland Whispers (Czibulka) 1 Min.



44 (Title) DO YOU TAKE THIS WOMAN Burlesque on Lange's Flower Song (Kempinski) ½ Min.



45 (Action) VICTORINE KISSES PERCY Burlesque on Mendelssohn's Wedding March (Kempinski) ½ Min.



THE END

Country of Origin, U. S. A.

Complete orchestrations and single piano parts of each separate number contained hereon, can be purchased from CAMEO MUSIC SERVICE CORPORATION, 315-317 WEST 47TH STREET, NEW YORK CITY.

95.1964.4