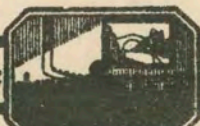


Tues + Wed.
Feb. 16-17

Thematic Music  Cue Sheet



M. J. MINTZ (PATENT)
JULY 31, 1923.

ADOLPH ZUKOR and JESSE L. LASKY

present

J. M. BARRIE'S

"A KISS FOR CINDERELLA"
A HERBERT BRENON PRODUCTION

with

Betty Bronson, Tom Moore and Esther Ralston

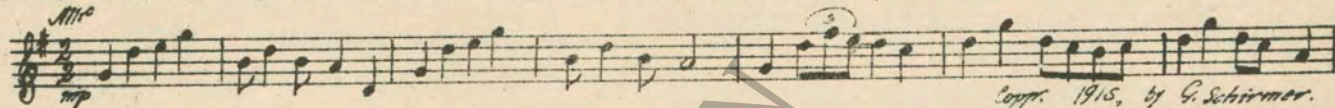
Screen play by Willis Goldbeck and Townsend Martin

Music compiled by James C. Bradford

Footage 9621 feet

A Paramount Picture

- 1 AT SCREENING Mock Morris (Grainger) 1 Min.

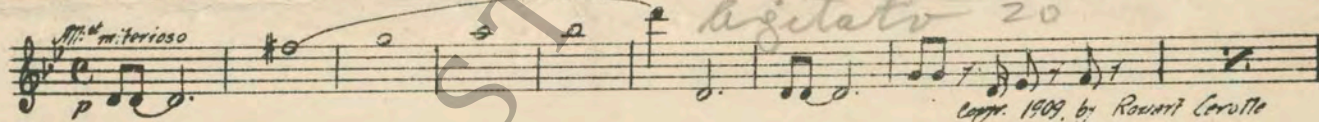
M^{to}

 Coppr. 1915, by G. Schirmer.

- 2 (Title) LONDON Storm or Fire Music (Haines) 1½ Min.

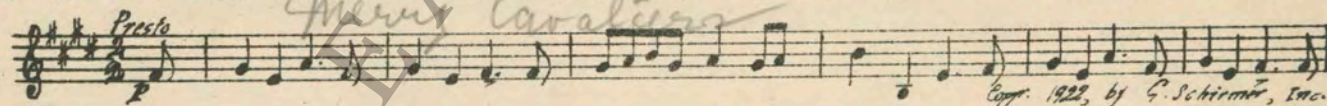
M^{to}

 Coppr. 1925, by Hawkes & Son.

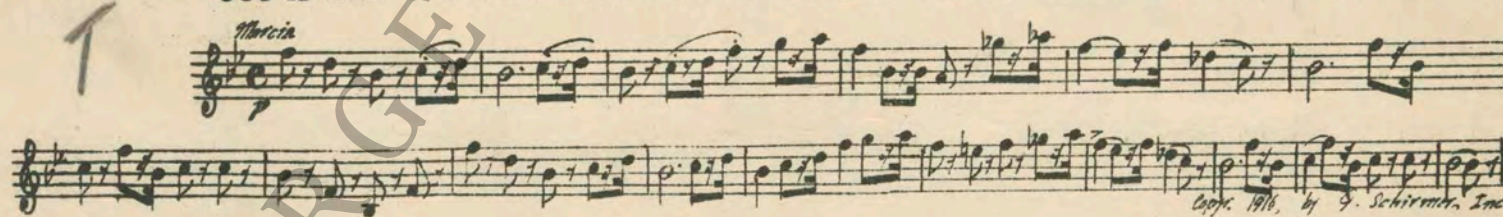
- 3 (Action) POLICEMAN ON STAIRS La Foret Perfide (Gabriel Marie) 1 Min

NOTE: Catch explosions, propeller effects, etc.
M^{to} misterioso

 Coppr. 1909, by Rouart Carolle

- 4 (Action) MR. BODIE AWAKENS Shepherd's Hey (Grainger) 4 Min.

M^{to} Presto

 Coppr. 1922, by G. Schirmer, Inc.

- 5 (Title) IT'S PLAIN, THE FIRST THING TO FIND OUT IS POLICEMAN THEME: Marche Miniature (Iacobi) 2 Min.

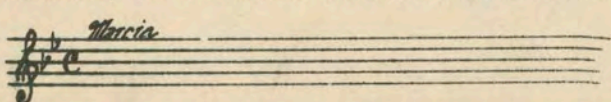
M^{to} Marcia

 Coppr. 1916, by G. Schirmer, Inc.

- 6 (Action) CINDERELLA OPENS DOOR Humoresque (Tschaikowsky) 2½ Min.

M^{to}

 Coppr. 1922, by Carl Fischer.

- 7 (Title) MR. BODIE, HOW WOULD YOU GET BY... Repeat Policeman Theme No. 5 1 Min.

M^{to} Marcia


NOTE: Always start after the introduction; play "PP" and slowly as a misterioso.

Have you ever seen the Prince

8 (Title) HAVE YOU EVER SEEN THE PRINCE..... Columbine (Ring) 1½ Min.

Musical notation for 'HAVE YOU EVER SEEN THE PRINCE' with tempo marking 'Tempo molto' and copyright 'Copp. by Chappell & Co.'

9 (Action) CINDERELLA SEES POLICEMAN'S HELMET. Repeat No. 3 "La Foret Perfide" 2½ Min.

Musical notation for 'CINDERELLA SEES POLICEMAN'S HELMET' with tempo marking 'Allegro misterioso' and handwritten 'agitato'.

10 (Title) NOTE: Play first movement only and repeat. ONE E-S-P-I-O-N-A-G-E Tambourin (Gretry-Mottl) 1 Min.

Musical notation for 'ONE E-S-P-I-O-N-A-G-E' with tempo marking 'Presto' and copyright 'Copp. 1914, by Carl Fischer.'

11 (Action) POLICEMAN OPENS DOOR—MR. BODIE ENTERS Repeat No. 4 "Shepherd's Hey" 1¼ Min.

Musical notation for 'POLICEMAN OPENS DOOR—MR. BODIE ENTERS' with tempo marking 'Presto'.

12 (Action) CINDERELLA HOLDS OUT HAND WITH COINS CINDERELLA THEME: The Swan (St. Saens) 1 Min.

Musical notation for 'CINDERELLA HOLDS OUT HAND WITH COINS' with tempo marking 'Adagio' and copyright 'Copp. 1906, by Carl Fischer.'

13 (Action) CINDERELLA RUSHES FROM ROOM Repeat Policeman Theme No. 5 1 Min.

Musical notation for 'CINDERELLA RUSHES FROM ROOM' with tempo marking 'Allegro'.

14 (Action) NOTE: Catch fake footsteps of Mr. Bodie and Policeman as they tramp out of room. THEY LEAVE—CINDERELLA APPEARS WITH HAT ON L'Encore (Herbert) 1 Min.

Musical notation for 'THEY LEAVE—CINDERELLA APPEARS WITH HAT ON' with tempo marking 'Mod.to' and copyright 'Copp. 1910, by Wm. Witmark & Son.'

15 (Action) CINDERELLA STARTS TO DANCE A Little Peach (Colin) ½ Min.

Musical notation for 'CINDERELLA STARTS TO DANCE' with tempo marking 'Allegro' and copyright 'Copp. 1917, by Hawkes & Son.'

16 (Action) WOMAN APPEARS ON STAIRS Dramatic Allegro (Savino) 2½ Min.

Musical notation for 'WOMAN APPEARS ON STAIRS' with tempo marking 'Allegro' and handwritten 'Rhythmic agitato'.

17 (Title) THE PENNY FRIEND Wot' Oher (Luz) 2½ Min.

Musical notation for 'THE PENNY FRIEND' with tempo marking 'Allegro Mod.to' and handwritten 'Carmencita Shea'.

D - Man Leaves Room

3

18 (Action) MAN LEAVES ROOM The Irish Washerwoman (Langey) 1/4 Min.

Musical notation for 'The Irish Washerwoman' (Langey), marked 'Rit' and 'Copr. 1913, by G. Schirmer, Inc.'

19 (Action) OLD WOMAN LEAVES Pleading Love Theme (Bradford) 1/4 Min.

Musical notation for 'Pleading Love Theme' (Bradford), marked 'And.te' and 'Copr. 1924, by Belwin, Inc.' with handwritten 'Caucifix' above.

20 (Action) DESPONDENT WOMAN LEAVES Mrs. 'Awkins (Luz) 1 Min.

Musical notation for 'Mrs. 'Awkins' (Luz), marked 'And.te con moto' and 'Copr. 1920, by The Play Music Co.'

21 (Action) MEAN WOMAN LEAVES Repeat Cinderella Theme No. 12 3/4 Min.

Handwritten 'II' and musical notation for 'Repeat Cinderella Theme No. 12', marked 'Adagio'.

22 (Action) BEARDED MAN ENTERS March Burlesque (Cillet) 2/4 Min.

Musical notation for 'March Burlesque' (Cillet), marked 'Marcia' and 'mf', with handwritten 'golly ellet' above.

23 (Action) CINDERELLA PULLS OFF MAN'S BEARD Appassionato No. 47 (Berge) 1/2 Min.

Musical notation for 'Appassionato No. 47' (Berge), marked 'Mod.to' and 'mf', with handwritten 'Dram. Sens.' above.

24 (Title) THERE JUST ME TRYING TO DO ME BIT... Repeat Cinderella Theme No. 12 3/4 Min.

Handwritten 'II' and musical notation for 'Repeat Cinderella Theme No. 12', marked 'Adagio'.

25 (Title) THIS IS GLADYS Rule Britannia (Loesch) 1/4 Min.

Musical notation for 'Rule Britannia' (Loesch), marked 'Maestoso' and 'ff', with 'Copr. by Carl Fischer' below.

NOTE: Play very slowly.

26 (Title) THIS IS MARIE, THERESA La Marseillaise) 1/4 Min.

Musical notation for 'La Marseillaise', marked 'Maestoso', with 'Copr. 1923, by The Play Music Co.' below.

27 (Title) THIS IS SALLY Stars and Stripes (Sousa) 1/4 Min.

Musical notation for 'Stars and Stripes' (Sousa), marked 'Marcia' and 'ff', with 'Copr. by John Church Co.' below.

NOTE: Play last strain of Trio.

D-Policeman Jees Barbed Wire -

28 (Action) POLICEMAN SEES BARBED WIRE CINDERELLA THEME: The Swan (St. Saens) 3/4 Min.

II *Adagio*
Musical notation for item 28. Copyright 1906, by Carl Fischer.

29 (Title) SHE'S NOT EXACTLY SWISS—HER NAME IS Im Wald und der Haide (Kaine) 1/2 Min.

Valse
Musical notation for item 29. Copyright by Volkwein Bros.

30 (Title) I'M A PATRIOT, I AM Pack Up Your Troubles (Powell) 3/4 Min.

Marcia
Musical notation for item 30. Copyright by Harms, Inc.

31 (Action) CHILDREN RISE FROM BOXES Children's Overture (Quilter) 1 3/4 Min.

And.^{te} Mod.^{to}
Musical notation for item 31. Copyright 1921, by Chappell & Co.

32 (Action) -INSERT-PICTURE OF CINDERELLA Fairy Tales (Komzak) 1/2 Min.

All.^{to}
Musical notation for item 32. Copyright 1941, by Carl Fischer.

33 (Action) CINDERELLA APPEARS WITH CAP AND BROOM Midsummer Night's Dream (Mendelssohn) 1 1/4 Min.

All.^o molto
Musical notation for item 33. Copyright 1902, by Carl Fischer.

34 (Title) THE KING, THE PRINCE AND FATHER..... God Save the King 1/2 Min.

Mes.^{oso}
Musical notation for item 34. Copyright by Carl Fischer. *America*

35 (Action) THEY SIT DOWN Little Flower Garden (Breil) 1/4 Min.

All.^{to}
Musical notation for item 35. Copyright 1923, by Belwin, Inc.

36 (Title) I WISH YOU WERE NOT SO SURE OF..... LOVE THEME: Rose in the Bud (Forster) 1 Min.

Mod.^{to}
Musical notation for item 36. Copyright 1910, by Chappell & Co.

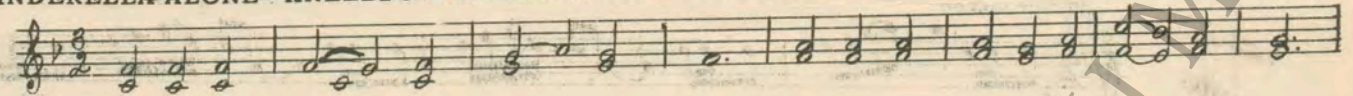
37 (Action) CINDERELLA AND POLICEMAN RISE FROM TABLE 2nd Arabesque (Debussy) 3/4 Min.

All.^{to}
Musical notation for item 37. Copyright 192, by Durand & Co. *Golden Buttercup*

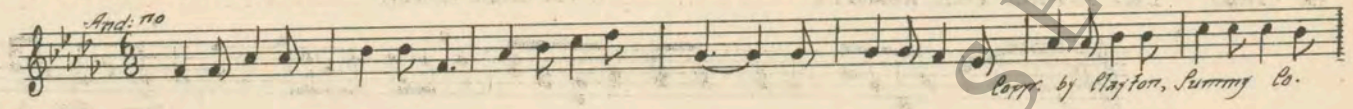
D. Cinderella alone - Kneels in Prayer -

5

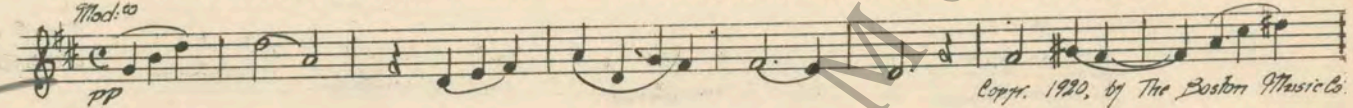
38 (Action) CINDERELLA ALONE—KNEELS IN PRAYER: Sun of My Soul (Ritter) ½ Min



39 (Action) NOTE: Play "PP" strings only con sordini; play in lower register. SHE RISES FROM KNEES The Slumber Boat (Gaynor) ½ Min



40 (Action) NOTE: Play the same as previous selection. CINDERELLA STEALS SILENTLY FROM ROOM Prelude Religieux (Lang) 2¾ Min.

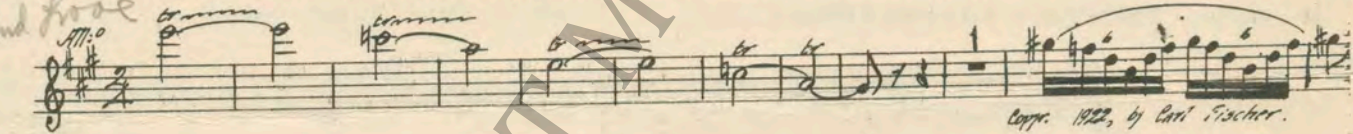


41 (Title) NOTE: As clock tower shows, play Westminster chimes at ¾ hour. IN FIFTEEN MINUTES THE BALL WILL BE OVER Omens (Schad) 1 Min.

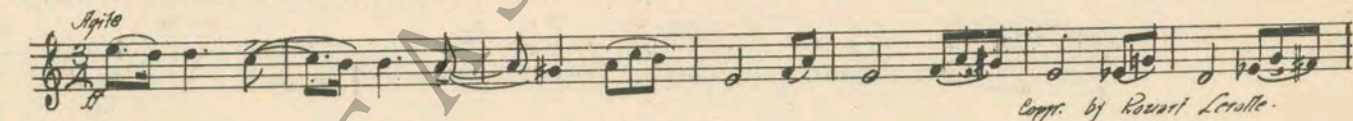


42 (Action) SNOW STARTS TO FALL—FAIRY APPEARS. Whispering Flowers (V. Blon) 2¾ Min.

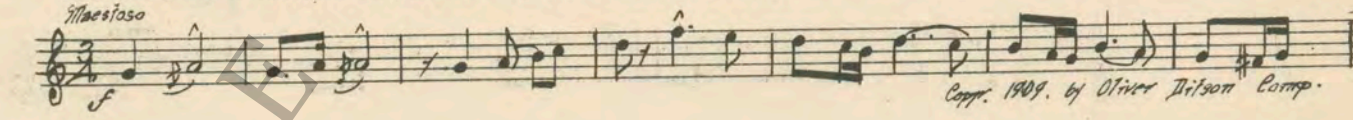
night and rose



43 (Action) NOTE: Start at beginning; repeat first movement and second movement, then D. C. if necessary. FAIRY TOUCHES HER WITH WAND Epilogue (Gabriel Marie) 1 Min.



44 (Action) NOTE: Play first part only; trill on triangle, "FF" for transformation. TRANSFORMATION COMPLETE—WHITE HORSES AND CARRIAGE SHOWS Pomposo (Borch) 1 Min.



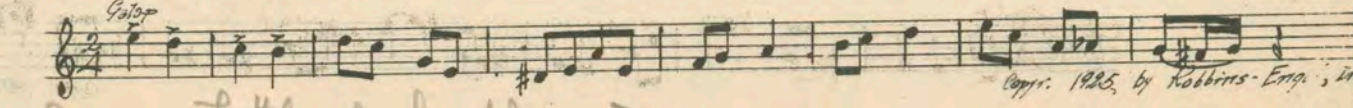
45 (Action) COACH STARTS OFF Scherzo (Mendelssohn) ¾ Min.



46 (Title) NOTE: Fairy bells jingling for horses. NOW LET THIS BE Processional (Savino) ½ Min.



47 (Action) NOTE: Play opening Fanfare only and repeat, then segue. FADE-IN BALL ROOM—CLOWN ACT Zip (Frey) 1 Min.



D = Curtains Open - Tittle, make Way for

48 (Action) CURTAINS OPEN—TITLE: MAKE WAY FOR Torch Dance (Thomas) 2 Min.

All.^o con sordini

Dance of the Minors
Copr. 1913, by Hawkes & Son.

49 (Title) LET LOOSE THE BEAUS The Eagle (Klein) 2½ Min.

Marziale

Copr. 1909, by M. Witmark & Son.

50 (Title) NOW WE COME TOO Malaguena (Moszkowski) 1 Min.

All.^o Pomposo
Polonaise

Copr. by Carl Fischer.

51 (Title) NOTE: Catch bells ringing wildly ad lib. DROWN THEM Perpetual Motion (Borch) ½ Min.

Agitato

Copr. 1918, by Berg

52 (Action) TWO UGLY SISTERS APPEAR Tell Me Pretty Maiden (Stuart) 1 Min.

Moderato

Copr. 1920, by Archer.

53 (Title) NOTE: Triangle roll for horse. MAKE WAY—MAKE WAY Happyland (DeKoven) 1½ Min.

All.^o pomposo
Processional

Copr. 1905, by Ewd. B. Marks

54 (Title) NOTE: Play from beginning "99" SHE'S GOOD The Merrymakers (Coates) 2 Min.

Vivace
Rustic Dance

Copr. 1923, by Chappell & Co.

55 (Action) PRINCE KISSES HER FOOT Macbeth (Johnson) ½ Min.

And.^{te}
My love to you

Copr. 1913, by Hawkes & Son

56 (Title) NOT SO FAST Dancin' on the Green (Fletcher) 1¾ Min.

All.^o tt
Young April

Copr. 1919, by Chappell & Co.

57 (Title) IT'S NOT A CATCH Pleading Love Theme (Bradford) ½ Min.

And.^{te}

Copr. 1924, by Belwin, Inc.

Just in the Lord

7

58. (Title) TRUST IN THE LORD The Festivities (Stanley) 3/4 Min.

Molto Vivace
mf
Festival March
 Copyright 1903 by Hawkes & Sons

59 (Title) THE MARRIAGE CEREMONY Bridal Chorus (Wagner) 1 1/4 Min.

moderato con moto
p
 Copyright 1910 by Carl Fischer

60 (Title) DO YOU, OH PRINCE Repeat Love Theme No. 36 1 Min.

3
Mod.to

61 (Action) DISCOVERS RING MISSING Thrills (Sanders) 1/2 Min.

Lively
 Copyright 1925 Sanders Co

(Action) PRINCE RECEIVES RING Repeat Love Theme No. 36 1/2 Min.

3
Mod.to

63 (Title) THE WEDDING MARCH Wedding March (Mendelssohn) 3/4 Min.

All.^o
 Copyright 1911 by Emil Ascher

64 (Action) PROCESSION DISAPPEARS THROUGH ARCHWAY Cavalcade (Ring) 1 Min.

All.^o
 Copyright 1924 by Chappell & Co

65 (Action) HAND ORGANS START PLAYING DANCE MUSIC Pickins (Kaplan) 1 1/4 Min.

Tempo giusto
 Copyright 1917 by G. Schirmer

66 (Action) CINDERELLA STARTS TO WHIRL Poeme Dramatique (Fourrain) 1 3/4 Min.

Assez Soutenu
f
 Copyright 1922 by Choudens

NOTE: S. D. play dance tempo against music; catch whirls on S. D. Roll on cymbal for transformation; bells ringing throughout sequence ad lib.

67 (Action) EXTERIOR-CINDERELLA IN SNOW Valse Triste (Sibelius) 3/4 Min.

Valse Misterioso
p
 Copyright 1911 by Breitkopf

NOTE: Play second strain only, very slow and "pp"

D-Cinderella Opens Eyes

68 (Action) CINDERELLA OPENS EYES LOVE THEME: Rose in the Bud (Forster) ¾ Min.

3

Musical notation for item 68, including a treble clef, key signature of two flats, and a 4/4 time signature. The tempo marking is *Modto*. The music consists of a single melodic line with a long note at the end. Copyright notice: *Copyr. 1910 by Chappell & Co.*

69 (Title) CINDERELLA HAD CINDERELLA THEME: The Swan (St. Saens) 1½ Min.

2

Musical notation for item 69, including a treble clef, key signature of one sharp, and a 4/4 time signature. The tempo marking is *Adagio*. The music consists of a single melodic line. Copyright notice: *Copyr. 1910 by Chappell & Co.*

70 (Action) CHILDREN ENTER A Young Man's Fancy (Agar) 1 Min.

Musical notation for item 70, including a treble clef, key signature of two flats, and a 4/4 time signature. The tempo marking is *Modto*. The music consists of a single melodic line with a repeat sign at the beginning. Copyright notice: *Copyr. 1920 by Leo Feist.*

71 (Action) CHILDREN LEAVE ROOM Repeat Cinderella Theme No. 69, (Play "PP") 3½ Min.

2

Musical notation for item 71, showing a treble clef, key signature of one sharp, and a 4/4 time signature. The tempo marking is *Adagio*. The notation is mostly blank, indicating a piano solo in the upper octave.

72 (Action) POLICEMAN AT DOOR Repeat Love Theme No. 68 (Play "PP") 1¼ Min.

3

Musical notation for item 72, showing a treble clef, key signature of two flats, and a 4/4 time signature. The tempo marking is *Modto*. The notation is mostly blank, indicating a repeat of item 68.

73 (Action) CINDERELLA REMOVES HIS HELMET Just A'Wearin' for You (Bond) (Play "PP") 1¼ Min.

Musical notation for item 73, including a treble clef, key signature of two flats, and a 4/4 time signature. The tempo marking is *Andte*. The music consists of a single melodic line. Copyright notice: *Copyr. 1918 by Arnett-Delona's Co*

74 (Action) INSERT—MY DARLING I Love You Truly (Bond) 1 Min.

Musical notation for item 74, including a treble clef, key signature of two flats, and a 4/4 time signature. The tempo marking is *Andte con amore*. The music consists of a single melodic line. Copyright notice: *Copyr. 1917 by Arnett-Delona's Co*

75 (Title) I WANT YOU TOO Poupee Valsante (Poldini) ¾ Min.

Musical notation for item 75, including a treble clef, key signature of one sharp, and a 3/8 time signature. The tempo marking is *Valse.*. The music consists of a single melodic line. Copyright notice: *Copyr. 1918 by Carl Fischer.*

76 (Title) QUICK, WILL YOU HAVE ME LOVE THEME: Rose in the Bud (Forster) 1¼ Min.

3

Musical notation for item 76, including a treble clef, key signature of two flats, and a 4/4 time signature. The tempo marking is *Modto*. The music consists of a single melodic line. Copyright notice: *Copyr. 1910 by Chappell & Co*

77 (Title) THEY'RE TERRIBLY SMALL CINDERELLA THEME: The Swan (St. Saens) 1 Min.

Musical notation for item 77, including a treble clef, key signature of one sharp, and a 4/4 time signature. The tempo marking is *Adagio*. The music consists of a single melodic line. Copyright notice: *Copyr. 1906 by Carl Fischer.*

NOTE: Play "FF" for close.

THE END

Country of Origin. U. S. A.

Complete Orchestration and single parts of all compositions contained herein can be purchased from CAMEO MUSIC SERVICE CORPORATION, 112-118 West 44th Street, New York City