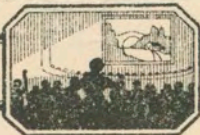


Thematic Music



Cue Sheet

M. J. MINTZ (PATENT)
JULY 31, 1923

Joseph M. Schenck

PRESENTS

Constance Talmadge

IN

“Learning To Love”

A FIRST NATIONAL PICTURE

MUSIC COMPILED BY

EDWARD KILENYI

MUSICAL DIRECTOR, COLONY THEATRE, N. Y. CITY

Complete Orchestrations and single parts of all compositions contained herein can be purchased from CAMEO
MUSIC SERVICE CORPORATION, 112-118 West 44th Street, New York City

MADE IN U. S. A.



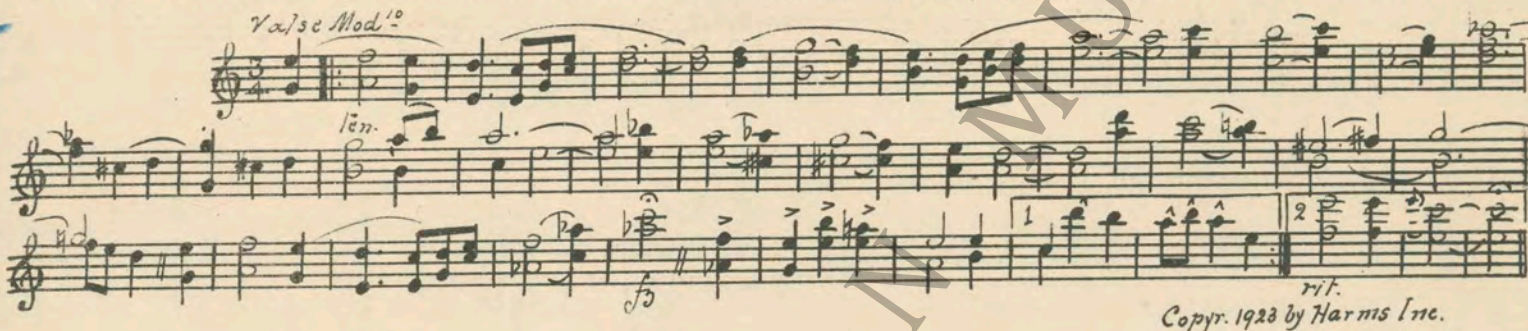
M. J. MINTZ (PATENT)
JULY 31, 1923.

"LEARNING TO LOVE"

Music compiled by Edward Kilenyi

- 1 AT SCREENING THEME: So This is Love (Goetz) 1¼ Min.

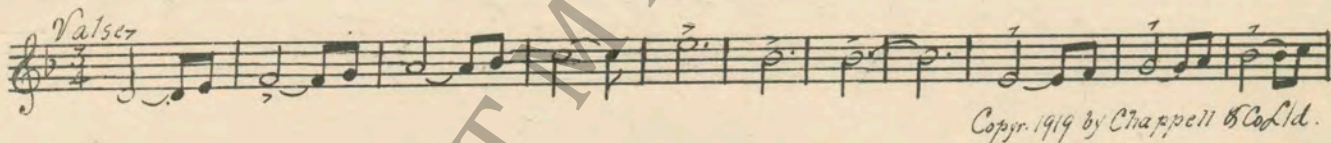
Valse Mod^o



rit.
Copr. 1923 by Harms Inc.

- 2 (Title) IN THE HEART OF ME On Miami Shore (Jacobi) 2¾ Min

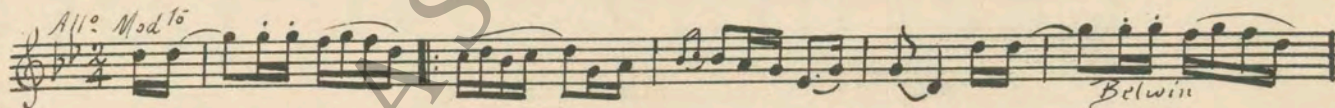
Valsez



Copr. 1919 by Chappell & Co. l.d.

- 3 (Title) BUT HOW ABOUT THIS PETTING Graceful Blondinette (Borch) 2 Min.

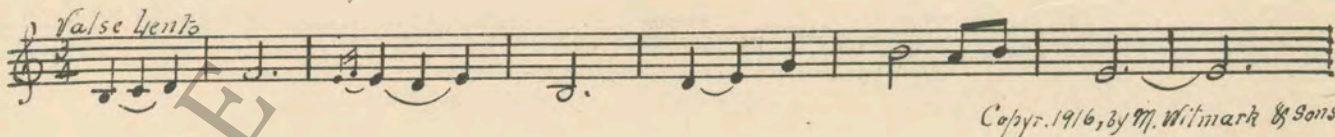
All^o Mod^{to}



Belwin

- 4 (Title) AREN'T YOU GOING TO KISS ME Kiss me Again (Herbert) ½ Min.

Valse lente

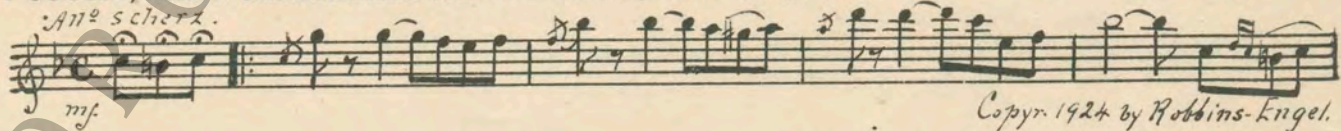


Copr. 1916, by M. Witmark & Sons

NOTE: Play grotesquely.

- 5 (Title) MY COUSIN, BILLY CARMICHAEL Butterfly Dance (Frey) 1¼ Min.

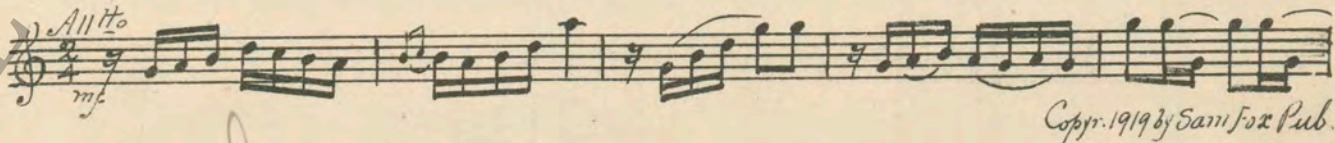
All^o scherz.



mf.
Copr. 1924 by Robbins-Kugel.

- 6 (Title) PAT'S FINANCIAL AFFAIRS Spirit of Youth (Dahlquist) 1¾ Min.

All^{to}



mf.
Copr. 1919 by Sam Fox Pub.

D = At Railroad Station

2

7 (Action) AT RAILROAD STATIONRustic Allegro (Savino)3 Min.

All^o Mod^{to}

Copyright 1923 by G. Schirmer

NOTE: Use train effects.

8 (Action) AUTO ARRIVES BEFORE HOUSEFrolics and Fancies (Adams)1 1/4 Min.

All^o

Copyright 1923 by G. Schirmer

9 (Title) THURSDAY AT TENJealous (Little)1 3/4 Min.

Mod^{to}

Copyright 1924 by Henry Waterson, Inc.

10 (Title) YOU CERTAINLY HAVE CHANGEDBlushing Coquette (Schendel)5/4 Min

All^o grazioso

Copyright 1921 by Belwin Inc.

Segue

SEGUE: Loves Chatter (Mendoza)

All^o

Copyright 1924 by Robbins-Engel

11 (Title) FIVE O'CLOCK AT ANY DAYSmiles (Somerville)1 1/4 Min

All^o Mod^{to}

Copyright 1924 by Harniss & Son.

12 (Title) I'VE GOT THE GRANDEST MANOh Lady Be Good (Gershwin)1 Min.

Mod^{to}

Copyright 1924 by Harniss Inc.

13 (Title) DO IT AGAINDo It Again (Gershwin)2 Min.

Fox Trot

Copyright 1922 by Harniss Inc.

D = Sitting Before Mirror

3

14 (Action) THE SITTING BEFORE MIRROR Whims of Love (Baron) 2 1/4 Min



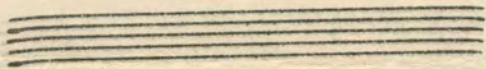
15 (Title) I DON'T SUPPOSE YOU CARE Cupid's Surprise (Gross) 2 Min



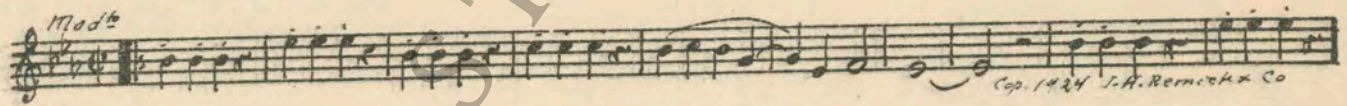
16 (Title) WHEN A GIRL WHO HAS EVERYTHING In Love With Love (Kern) 3/4 Min



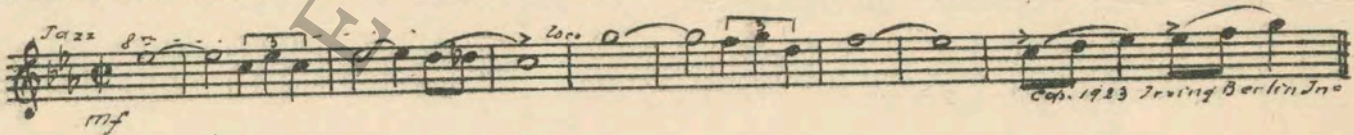
17 (Title) SOMEONE IS STEPPING BETWEEN US Repeat No. 9 "Jealous" 1 Min.



18 (Title) NOW WE WILL HAVE A DANCE Follow the Swallow (Henderson) 1 1/4 Min.



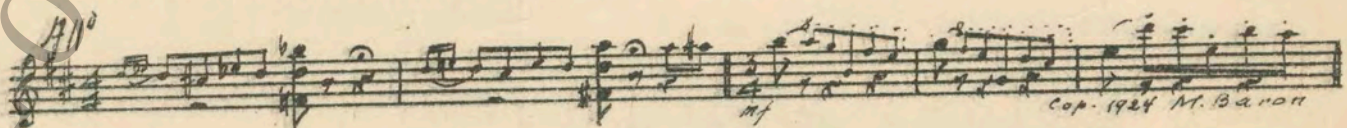
19 (Title) SOMEBODY IS TAKING YOU AWAY Love (Young) 1 3/4 Min.



20 (Title) DON'T YOU THINK IT'S TIME Little Coquette (Reiser) 2 1/2 Min



21 (Action) YOUNG MAN SEEN AT TABLE, SLEEPING ... Enchanted April (Tyson) 2 1/4 Min



NOTE: Start at beginning.

D = Taxi Seen Outside

GEORGE EASTMAN MUSEUM

4

22 (Action) TAXI SEEN OUTSIDE Ouch (Kaufman) 3¼ Min.

Musical notation for 'TAXI SEEN OUTSIDE' in 2/4 time, marked *mf*. The melody features eighth and sixteenth notes. Dynamic markings include *mf* and accents (^) over notes. The piece concludes with a cymbal (cymb) effect. Copyright 1924 by Robbins-Engel.

23 (Action) MAN SITTING, SMOKING Before the Footlights (Manney) 3 Min.

Musical notation for 'MAN SITTING, SMOKING' in 2/4 time, marked *pp*. The melody consists of eighth and sixteenth notes. Copyright 1921 by Carl Fischer.

24 (Action) NIGHT SCENE IN ROOM Misterioso Burlesque (Savino) 2½ Min.

Musical notation for 'NIGHT SCENE IN ROOM' in 2/4 time, marked *mf* and *Mod^{to} pizz.*. The melody features eighth and sixteenth notes. Copyright 1924 by Robbins-Engel.

25 (Action) SHE WAKES UP Moonlight Memories (Rose) 1¾ Min.

Musical notation for 'SHE WAKES UP' in 2/4 time, marked *Valve lento*. The melody features eighth and sixteenth notes. Copyright 1924 by Leo Feist.

NOTE: Play slow and "PP" with mutes.

26 (Title) BECAUSE I AM HORRIBLY IN LOVE WITH YOU Repeat Theme No. 1 2¼ Min.

Musical notation for 'BECAUSE I AM HORRIBLY IN LOVE WITH YOU' showing a single treble clef staff with a whole rest.

NOTE: Play "PP" and slow.

27 (Action) INSERT—TOWN TOPICS Perpetual Motion (Borch) 1¾ Min.

Musical notation for 'INSERT—TOWN TOPICS' in 2/4 time, marked *Agitato*. The melody features eighth and sixteenth notes. Copyright 1918 by Berg.

28 (Title) HER BRIDAL NIGHT Repeat Theme No. 1 1½ Min.

Musical notation for 'HER BRIDAL NIGHT' showing a single treble clef staff with a whole rest.

NOTE: Play "PP" and slow.

29 (Title) YOU DON'T THINK I CAN TAKE YOU SERIOUSLY Film Theme No. 38 (Kilenyi) 1½ Min.

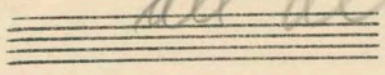
Musical notation for 'YOU DON'T THINK I CAN TAKE YOU SERIOUSLY' in 2/4 time, marked *Mod^{to} mf*. The melody features eighth and sixteenth notes, including triplet markings (3). Copyright 1924 by Carl Fischer.

D. left alone

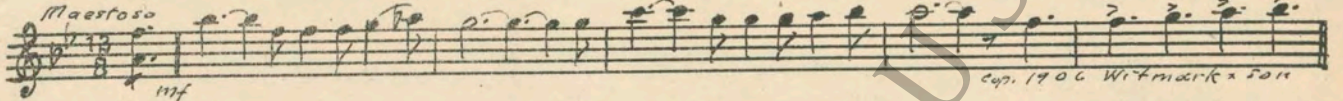
5

30 (Action) LEFT ALONE Repeat Theme No. 1 (Play "PP") 2½ Min

T
all alone



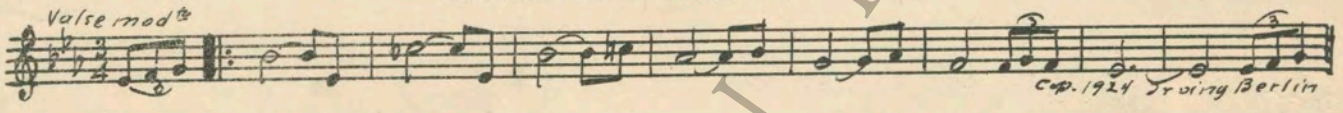
31 (Action) BOY FALLS DOWN ON DECK Love Me and the World is Mine (Ball) 3 Min



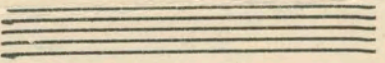
Segue

NOTE: Play grotesquely.

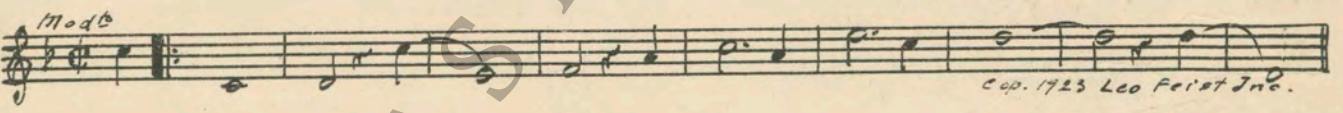
SEGUE: What'll I Do (Berlin)



32 (Title) *T* AFTER A MISERABLE UNHAPPY WEEK Repeat Theme No. 1 1¼ Min



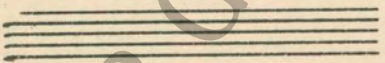
33 (Title) I'VE LOVED YOU FROM THE BEGINNING... I Love You (Archer) 1¾ Min



34 (Action) INSERT—TELL'S Words (Spencer) 2¼ Min.



35 (Title) *T* BREAKFAST FOR TWO Repeat Theme No. 1 2 Min.



NOTE: Play to action.

THE END

Complete Orchestrations and single parts of all compositions contained herein can be purchased from CAMEO MUSIC SERVICE CORPORATION, 112-114 West 44th Street, New York City

GEORGE EASTMAN MUSEUM