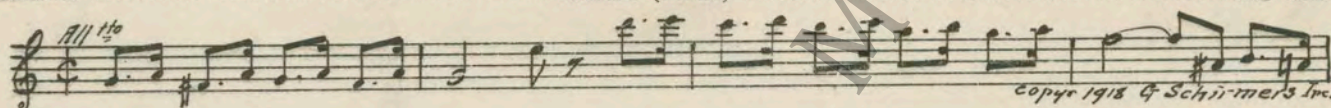


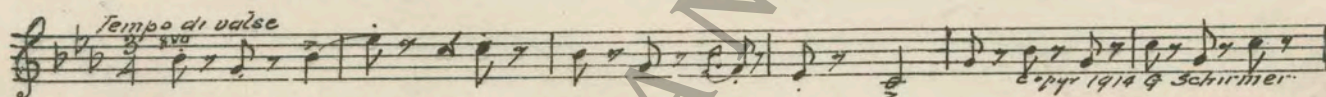
M. J. MINTZ (PATENT)  
JULY 31, 1923.

Richard A. Rowland  
presents  
**BILLIE DOVE**  
in  
**"AMERICAN BEAUTY"**  
with  
**Lloyd Hughes**  
Compiled by James C. Bradford  
A First National Picture

- 1 AT SCREENING ..... Chianti (Friml) ..... 2¼ Min.



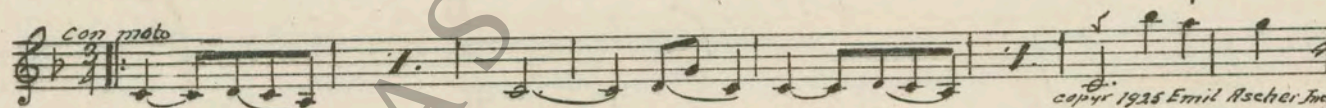
- 2 (Title) OF ALL THE FIFTH AVENUE SHOPS ..... The Baker's Boy and the Chimney Sweep (Herbert) ..... 1 Min.



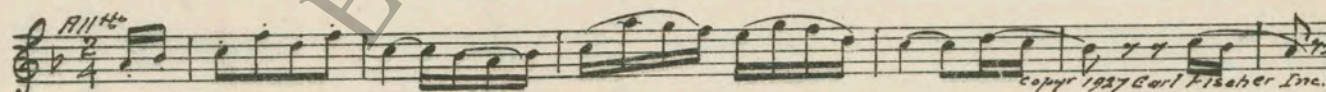
- 3 (Title) MR. FONTAIN GILLESPIE ..... A Lesson In Flirtation (Roberts) ..... 2 Min.



- 4 (Action) MRS. GILLESPIE AND MILLIE MEET ..... Blossoms (Butler) ..... ¾ Min.



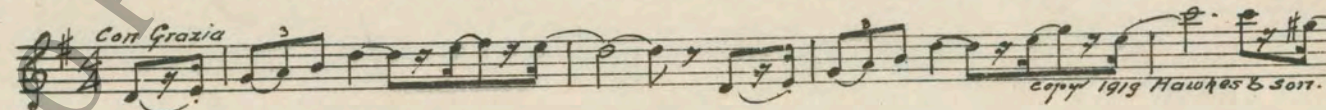
- 5 (Title) FIFTH AVENUE'S SMARTEST HOTEL ..... Playful Rondo (Greene) ..... 1¾ Min.



- 6 (Title) WHY ARCHIE ..... Debutante (Rapee-Axt) ..... 1¾ Min.



- 7 (Action) MILLIE ENTERS DINING ROOM ..... Cinderella's Wedding (Ancliffe) ..... 2 Min.



- 8 (Action) ARCHIE ENTERS TELEPHONE BOOTH ..... Polly (Zamecnik) ..... 2¾ Min.



NOTE: Produce effect of clattering dishes, etc.



9 (Title) MADAM O'REILLY .....A Bit O'Blarney (Helf) .....1¾ Min.

Musical notation for item 9, featuring a treble clef, a key signature of one flat, and a 3/8 time signature. The melody is written on a single staff with various rhythmic values and accidentals. Copyright notice: Copyright 1904 Emil Hischer Inc.

10 (Title) AFTER THREE YEARS OF CHAPERONING..Rural Flirts (Bradford) .....1½ Min.  
NOTE: Produce hammering with stick on banister effect ad lib.

Musical notation for item 10, featuring a treble clef, a key signature of two sharps, and a 2/4 time signature. The melody is written on a single staff. Copyright notice: Copyright 1905 Edwin J. ...

11 (Title) WHAT DO YOU THINK I AM .....Characteristic Allegro (Moskowsky) .....1 Min.  
NOTE: Produce noise of stone grinding machine ad lib.

Musical notation for item 11, featuring a treble clef, a key signature of one flat, and a 2/4 time signature. The melody is written on a single staff. Copyright notice: Copyright 1905 Robbins Music Corp.

12 (Action) MRS. O'REILLY ENTERS WITH GOWN.....The Breath of An Irish Smile (Bowers) .....¾ Min.

Musical notation for item 12, featuring a treble clef, a key signature of one flat, and a 3/4 time signature. The melody is written on a single staff with the instruction "Mod<sup>to</sup> 207 moto." Copyright notice: Copyright 1903 Robbins Music Corp.

13 (Title) MILLIE'S SOCIETY CAREER .....He Will Understand (Friml) .....1¼ Min.  
NOTE: Watch carefully for continuation of grinding machine.

Musical notation for item 13, featuring a treble clef, a key signature of two sharps, and a 2/4 time signature. The melody is written on a single staff with the instruction "Mod<sup>to</sup> 3va." and "Loco." Copyright notice: Copyright 1915 G. Schirmer.

14 (Action) JERRY OPENS DOOR—SNEAKS INTO ROOM. THEME: Just Like a Butterfly (Woods) .....2¼ Min.

Musical notation for item 14, featuring a treble clef, a key signature of one flat, and a 2/4 time signature. The melody is written on a single staff with the instruction "Espress." Copyright notice: Copyright 1927 F. H. Remick & Co.

Musical notation for item 14, featuring a treble clef, a key signature of one flat, and a 2/4 time signature. The melody is written on a single staff.

Musical notation for item 14, featuring a treble clef, a key signature of one flat, and a 2/4 time signature. The melody is written on a single staff.

Musical notation for item 14, featuring a treble clef, a key signature of one flat, and a 2/4 time signature. The melody is written on a single staff.

Musical notation for item 14, featuring a treble clef, a key signature of one flat, and a 2/4 time signature. The melody is written on a single staff. Copyright notice: Copyright 1927 F. H. Remick & Co.

15 (Title) SAY YOUR MILLIONAIRE IS WAITING.....Pastime (Clutsam) .....1¾ Min.

Musical notation for item 15, featuring a treble clef, a key signature of two sharps, and a 2/4 time signature. The melody is written on a single staff. Copyright notice: Copyright 1926 Hawkes & Son.

16 (Title) SO YOU'RE "PUTTING ON THE DOG".....Miss Dolly Dollars (Herbert) .....1¾ Min.

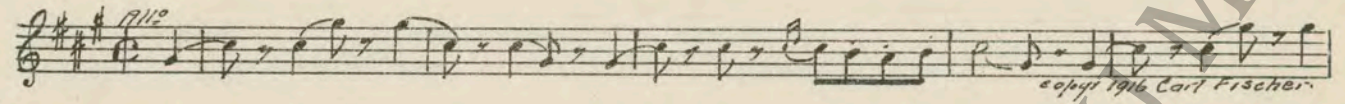
Musical notation for item 16, featuring a treble clef, a key signature of two sharps, and a 3/4 time signature. The melody is written on a single staff with the instruction "Valse Lento." Copyright notice: Copyright 1906 M. Witmark & Sons.



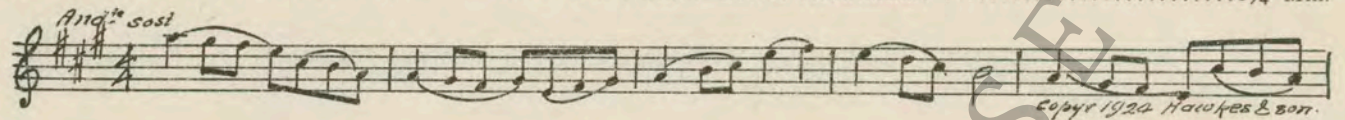
17 (Title) THE SILVER MINING CORPORATION.....Autumn Gold (Kaprey) .....1¾ Min.



18 (Action) HOTEL ENTRANCE .....Passepied (Delibes) .....2¾ Min.



19 (Action) MILLIE ALONE IN ROOM .....In a Kentish Garden (Rawlinson) .....1¾ Min.



20 (Title) WHAT'S JERRY BUYING A TRUNK FOR?....Adventure d'Amour (Bradford) .....3¼ Min.



21 (Title) I'M GOING TO TACKLE A HARD JOB.....Aubade Printaniere (Lacombe) .....1½ Min.



22 (Title) ALL MY LIFE I WANTED A BOAT RIDE.....The Chatterbox (Sanders) .....1¼ Min.



23 (Action) MILLIE OPENS BOX .....The Primrose Path (Clarke) .....¾ Min.



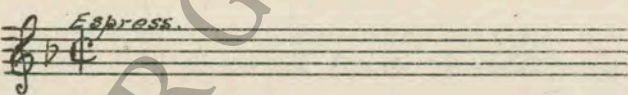
24 (Action) MRS. GILLESPIE TELEPHONING .....Scherzando Hurry (Frey) .....1¾ Min.



25 (Action) JERRY PACKING .....Love Romance (Bruhns) .....4¼ Min.



26 (Title) I'M AFRAID YOU'RE RIGHT, JERRY .....Repeat Theme No. 14 .....2¼ Min.



27 (Title) THE CLAVERHOUSE PARTY .....Douce Fievre (Y'Éner) .....1¼ Min.



28 (Action) MR. AND MRS. GILLESPIE ENTER .....Prelude (Jarnfelt) .....1½ Min.





- 29 (Title) IT WAS STOLEN FROM THE CLEANERS.....Impression Dramatique (Bradford) .....4¼ Min.  
*All.<sup>o</sup> Agitato*  
copyr 1927 Hobbs music corp.
- 30 (Title) I CERTAINLY ADMIRE YOUR GOWN.....Whimsical Charms (Fresco) .....1 Min.  
*Valse lenta*  
copyr 1925 Belwin Inc.
- 31 (Action) JERRY RECEIVES TRANSPORTATION .....Elopement (Carrozzini) .....1½ Min.  
*Vivace*  
copyr 1926 Sonnemann music co.
- 32 (Title) A CANARY NEVER .....Powder and Patches (Fletcher) .....1 Min.  
*Gavotte*  
copyr 1926 Hawkes & son.
- 33 (Title) MILLICENT, YOU PROMISED TO GIVE ME.Repeat Theme No. 14 .....½ Min.  
*Espress.*
- 34 (Action) NOTE: Play very sweetly and plaintive, no brass.  
TWO DETECTIVES APPEAR AT ENTRANCE.Keep It Dark (Luders) .....1¾ Min.  
*Schollisch.*  
copyr 1903 W. Wilmark Esens.
- 35 (Action) GILLESPIE SNEAKS INTO ROOM .....Repeat No. 28 "Prelude" .....2½ Min.  
*All.<sup>o</sup>*
- 36 (Action) FLASH-BACK TO ENTRANCE .....Emotional Andante (Axt) .....3¾ Min  
*And.<sup>te</sup>*  
copyr 1925 Hobbs music corp.
- 37 (Title) NO MATTER WHO YOU ARE .....What Does It Matter? (Berlin) .....1 Min.  
*Espress*  
copyr 1927 Irving Berlin Inc.
- 38 (Title) THE PARTY ISN'T OVER .....I'm On My Way Home (Berlin) .....1 Min.  
*All.<sup>o</sup> Mod.<sup>to</sup>*  
copyr 1925 Irving Berlin Inc.
- 39 (Title) WELL PRINCESS .....Effervescence (Wolf) .....3 Min  
*All.<sup>o</sup> vivo*  
copyr 1923 Geo H. Sanders Co
- 40 (Title) TAKE ME ALONG .....Repeat Theme No. 14 .....½ Min.  
*Espress.*

THE END

Printed in U. S. A.

Complete orchestrations and single piano parts of each separate number contained hereon, can be purchased from CAMEO MUSIC SERVICE CORPORATION, 315-317 WEST 47th STREET, NEW YORK CITY.