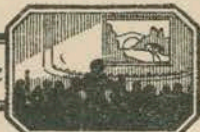


Thematic Music  Cue Sheet

M. J. MINTZ (PATENT)
JULY 31, 1923.

ADOLPH ZUKOR and JESSE L. LASKY

present

GEORGE BANCROFT

in

"THE DOCKS OF NEW YORK"

with

Betty Compton and Baclanova

A Josef von Sternberg Production

Story and screen play by Jules Furthman

Suggested by John Monk Saunders' "The Dockwalloper"

B. P. Schulberg, General Manager, West Coast Productions

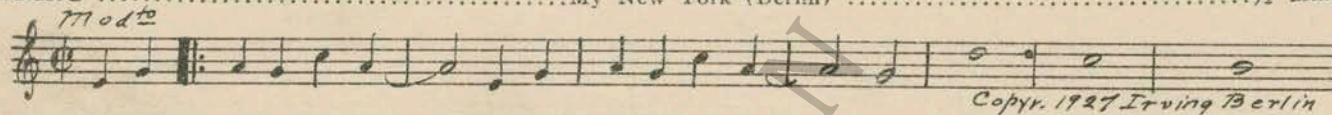
Compiled by James C. Bradford

Footage 7202 feet



A Paramount Picture

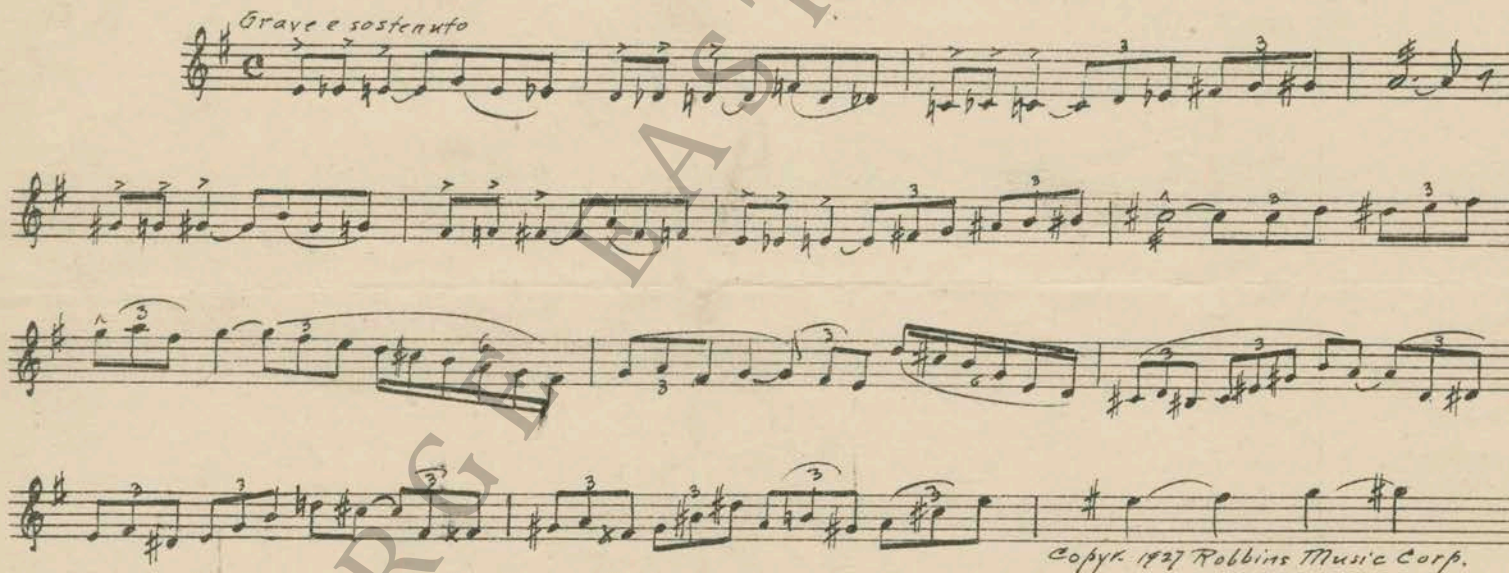
- 1 AT SCREENING My New York (Berlin) 1/2 Min.



- 2 (Action) STROKE HOLE OF SHIP In the Moonlight (Ketelbey) 2 3/4 Min.



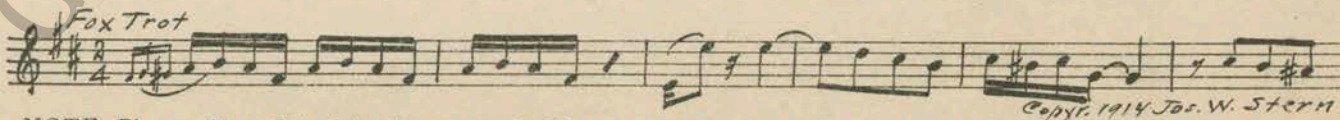
- 3 (Title) PICK UP THAT WASTE CHIEF THEME: The Captive (Savino) 3/4 Min.



- 4 (Title) HE'S THE MOST EVEN TEMPERED GUY.... The Jovial Rogue (Bradford) 1 1/2 Min.



- 5 (Title) THE SANDBAR Castle Perfect Trot (Europe) 3 Min.



NOTE: Play as Piano Solo imitating automatic Piano.

6 (Title) NIGHT AND FOGBoola-Boo (Friml)1 Min.

Modto

 Copyr. 1917 G. Schirmer

7 (Action) NOTE: Play very quietly and "P". GIRL JUMPS INTO RIVERAppassionata (Clutsam)1½ Min.

Allo con ario

 Copyr. 1926 Hawkes & Son

8 (Action) CHIEF AND BLONDERepeat Chief Theme No. 3½ Min.

Grave e sostenuto

9 (Action) BILL APPEARS AT BAR-ROOM WITH GIRL IN HIS ARMSDramatic Appassionato (Ciganeri)2¾ Min.

Andte con moto

 Copyr. 1925 Belwin Inc

10 (Action) BILL ENTERS BAR-ROOM ALONEDizzy Fingers (Confrey)1¼ Min.

Presto

 Copyr. 1924 Jack Mills

11 (Action) NOTE: Play as Piano Solo imitating automatic Piano. FLASH TO MAE SITTING UP IN BEDAir de Ballet (Massenet)1¼ Min.

Lento myst.

 Copyr. 1901 Carl Fischer

12 (Action) NOTE: Play first part only. BILL IN FRONT OF CLOTHES SHOPSerenata (Tarenghi)3¾ Min.

Allo modto

 Copyr. 1914 G. Schirmer

13 (Action) BILL LEAVES ROOMSusie (De Sylva)1¼ Min.

Fox Trot

 Copyr. 1925 Shapiro, Bernstein & Co

14 (Action) NOTE: Play as Piano Solo imitating automatic Piano. MAE ENTERSRufenreddy (Bargy)2¼ Min.

Fox Trot

 Copyr. 1923 Sam Fox

15 (Title) NOTE: Continue as automatic Piano Solo. YOU MAY BEWarriors Bold (Joels)2½ Min.

Agitato con moto

 Copyr. 1927 Sonnemann Mus. Co

16 (Title) GEE, YOU'RE STRONGSam Fox Trot (Howard)1¼ Min.

Modto

 Copyr. 1925 Sam Fox

NOTE: Play as Piano Solo imitating automatic Piano "PP".

17 (Action) BILL TAKES SEAT AGAIN LOVE THEME: Valse Triste (Vecsey) 1¼ Min

All^o

Copyright 1927 Robbins Music Corp.

18 (Title) AND COME TO THINK That Bran' New Gal O' Mine (Akst) 1 Min.

Fox Trot

Copyright 1923 M. Witmark & Sons

19 (Title) I'M GOING TO DO RIGHT BY OUR NELL..... Cheer Up (Kaufman) 2¾ Min.

One Step

Copyright 1927 Irving Berlin

20 (Title) ARE YOU GOING TO QUEER OUR FUN?..... Elopement (Carrozzini) ¾ Min.

Vivace

Copyright 1926 Sonnemann Music Co

21 (Title) LET THE OLD FUSS GO Wedding Blues (Friml) 1 Min.

T^o giusto

Copyright 1919 G. Schirmer

22 (Title) DEARLY BELOVED Pangs of Love (Carrozzini) 2¾ Min.

And^{ino}

Copyright 1926 Sonnemann Music Co

23 (Action) BILL EMBRACES MAE The Awakening (Zamecnik) 1¼ Min.

Appassionato

Copyright 1924 Sam Fox

24 (Action) MAE AND BLONDE EMBRACE Repeat Love Theme No. 17 1¼ Min.

25 (Title) WHO SAYS I WANT TO GET RID OF HER... Repeat No. 12 "Serenata" 1¼ Min.

26 (Action) MAE AND BILL STANDING ON PLATFORM... Repeat Love Theme No. 17 ¾ Min.

27 (Title) MORNING Misterioso-Patetico (Brunelli) 2 Min.

Molto

Copyright 1928 Robbins Music Corp.

28 (Action) CHIEF SITTING AT TABLE Repeat Chief Theme No. 3 1¼ Min.

29 (Action) MAE GETS OUT OF BED Agitato Lamentoso (Pasternack) 2 Min.

Molto All^o

Copyright 1928 Irving Berlin

30 (Action) AFTER BLONDE IS SEEN AT DOOR Unfinished Symphony (Schubert) 3¾ Min.

All^o mod^{to}

Copyr. Carl Fischer

31 (Action) PATROL WAGON DOORS CLOSE Amorous Adventure (Bradford) 3¾ Min.

Tranquillo

Copyr. 1928 Sonnemann Mus. Co

32 (Title) GET A MOVE ON, TIME'S UP Shannon River (Friml) 2 Min.

And^{te}

Copyr. 1928 E. F. Kalmus

33 (Action) MAE STARTS TO THREAD NEEDLE Trees (Rasbach) 2¾ Min.

And^{te}

Copyr. 1925 G. Schirmer

34 (Action) MAE TURNS ANGRILY ON BILL Andante from "Pathetique Symphony No. 6" (Tschaikowsky) .. 1½ Min.

And^{te}

Copyr. Hawkes & Son

35 (Action) HULL OF SHIP APPEARS Burlesco Pomposo (Lowitz) 1½ Min.

Pesante

Copyr. 1927 Irving Berlin

36 (Action) CHIEF ENTERS HOLD Repeat Chief Theme No. 3 1 Min.

Grave e sostenuto

37 (Action) BILL WALKS FROM HOLD The Spectre (Engleman) 1 Min.

And^{te} mosso

Copyr. 1927 Bosworth & Co

38 (Action) NIGHT COURT Berceuse (Jarnefelt) 1¾ Min.

Largo

Copyr. 1910 Carl Fischer

39 (Action) BILL ENTERS COURT Day of Doom (Joels) 1¼ Min.

And^{te}

Copyr. 1927 Sonnemann Mus. Co

40 (Title) SIXTY DAYS WON'T BE A LONG CRUISE.... Repeat Love Theme No. 17 ½ Min.

All^o

THE END

Country of Origin, U. S. A.

Complete orchestrations and single piano parts of each separate number contained herein, can be purchased from CAMEO MUSIC SERVICE CORPORATION, 315-317 WEST 47TH STREET, NEW YORK CITY.