

Joseph M. Schenck

 presents

NORMA TALMADGE

 in

“THE DOVE”

 with

NOAH BEERY and GILBERT ROLAND

 Compiled by Ernst Luz

United Artists Picture

Length of film 9 reels (8285 feet) Maximum projection time 1 hour, 35 minutes

- 1 AT SCREENING Magic Sunbeams (Drumm) 2 Min.

Copyright 1925 Music Buyers Corp.

NOTE: Play first 16 bars for screening only, then segue.
 SEGUE: Spanish Love Theme (Marquardt) (WHITE)

Copyright 1927 Photo Play Music Co.

- 2 (Title) A PALM BLESSED LAND Symphonic Incidentals No. 2 (Marquardt) 1 Min.

Copyright 1927 Music Buyers Corp.

- 3 (Action) WOMAN WALKS OUT OF STORE Facing Death (Bece) (BLACK) ¾ Min.

Copyright 1926 Schlesinger.

- 4 (Title) ACROSS THE DESERT La Gitana (Kreisler) 1¼ Min.

Copyright 1925 Carl Fischer Inc.

- 5 (Action) PEOPLE SHOW ON SCREEN AFTER MOVING SCENES Diabolical Allegro (Bergunker) (RED) 1¼ Min.

Copyright 1927 G. Schirmer, Inc.

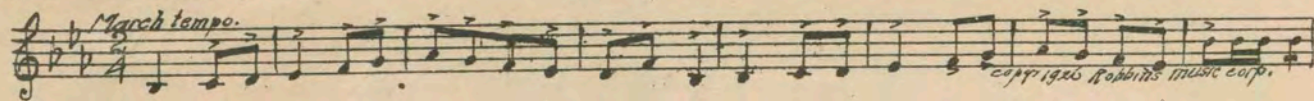
- 6 (Title) VERY WELL, LET HIM TALK Eroticon (Mikulicz) 2¼ Min.

Copyright 1927 Edw. B. Marks Music Co.

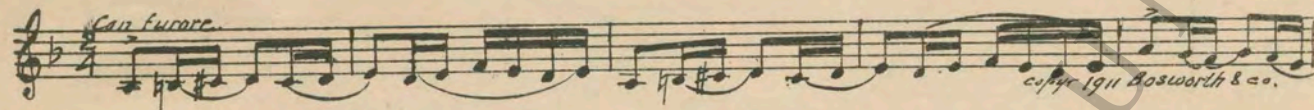
NOTE: Stop short with shot and accent, then segue.
 SEGUE: Santanna (Bryan)

Copyright 1926 G. Schirmer, Inc.

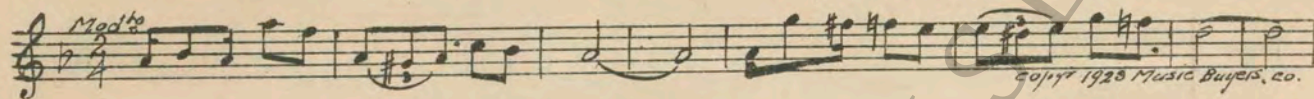
7 (Title) THE DANCE HALL IS CALLED Pepita (Motzan) ¾ Min.



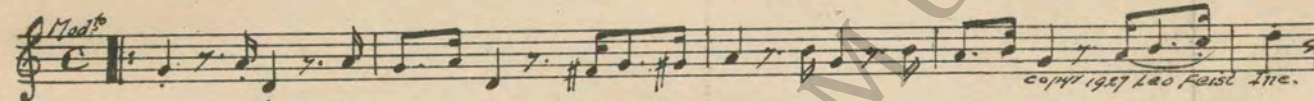
8 (Title) DON SANDOVAL HAS Trumpet Call by Trumpeter ¼ Min.
9 (Action) ONE SCENE Matador (Marchisio) 1 Min.



10 (Action) MAN STOPS BAND PLAYING La Clavel (Kempinski) 1½ Min.



11 (Title) ENOUGH OF THIS The Kinkajou (Tierney) 1¼ Min.



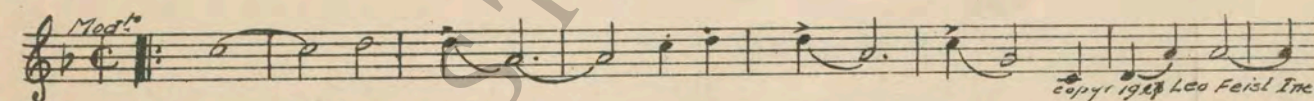
12 (Action) DON SANDOVAL KISSING GIRL Jurame (Grever) 1 Min.



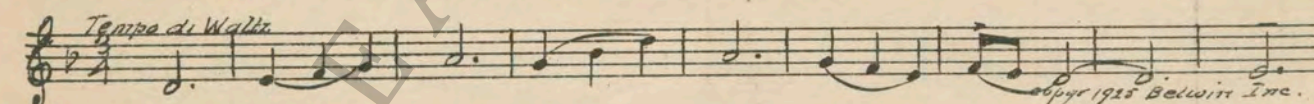
13 (Action) AFTER TOAST—PARTY DRINKS Yearning (Crist) 1½ Min.



14 (Action) SECOND TIME "THE DOVE" DOOR SHOWS Rio Rita (Tierney) 1¼ Min.



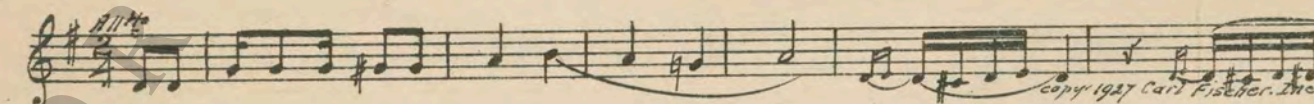
15 (Action) LIGHTS GO OUT WHILE DON SANDOVAL IS DANCING ON TABLE Charrita (Santos) 1 Min.



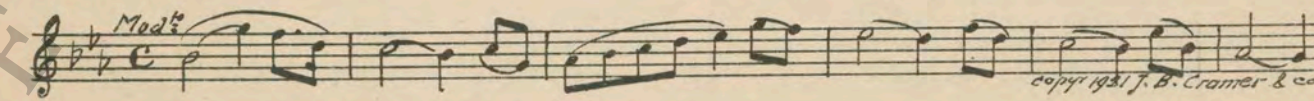
16 (Action) END OF DANCE—NORMA'S BACK TO CAMERA Fandango (Hosmer) 2 Min.



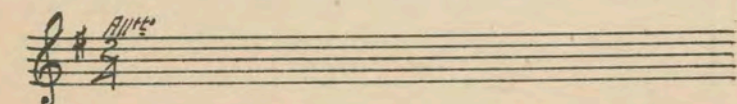
17 (Title) HOT SPORT Melida (Elie) (LT. GREEN) 2¼ Min.



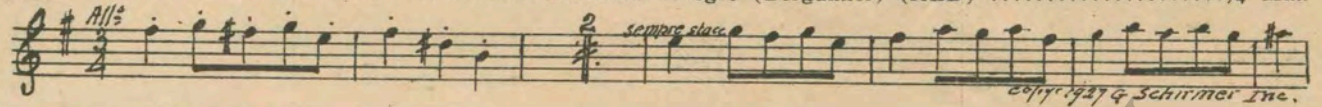
18 (Title) I CANNOT GO ON Echo of Spring (Cunningham) 1 Min.



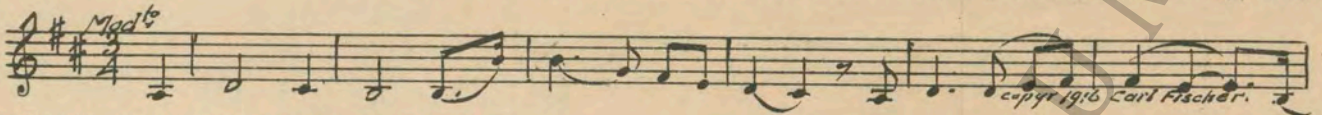
19 (Action) NORMA TALMADGE GETS UP FROM CHAIR. Repeat No. 17 (LT. GREEN) 1 Min.



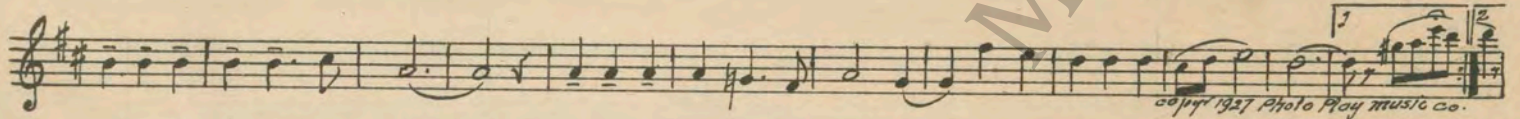
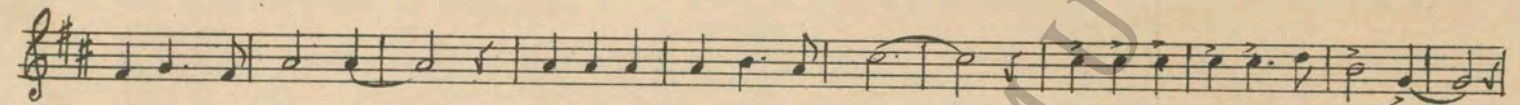
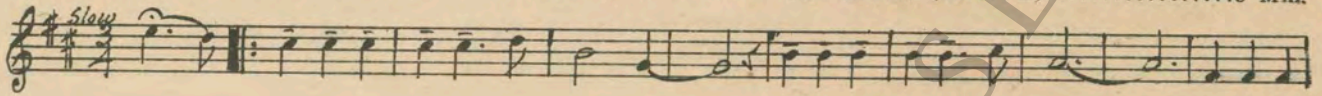
20 (Action) DON SANDOVAL CLOSES GATES Diabolical Allegro (Bergunker) (RED) ¼ Min.



21 (Action) MESSENGER AT DOOR SPEAKS TO DON SANDOVAL Cavatina (Bohm) 2¼ Min.

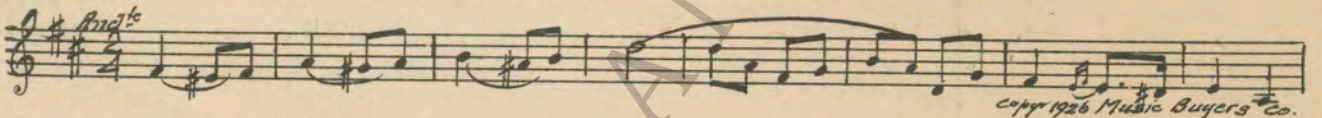


22 (Action) MAN WALKS OUT OF ROOM FROM NORMA TALMADGE Spanish Love Theme (Marquardt) (WHITE) 3 Min.

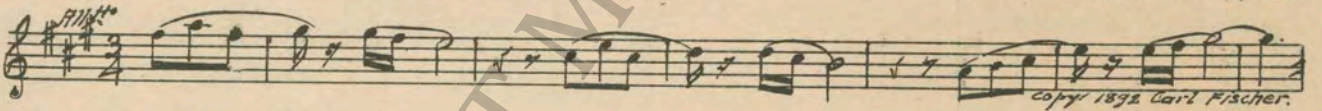


NOTE: Play once and segue.

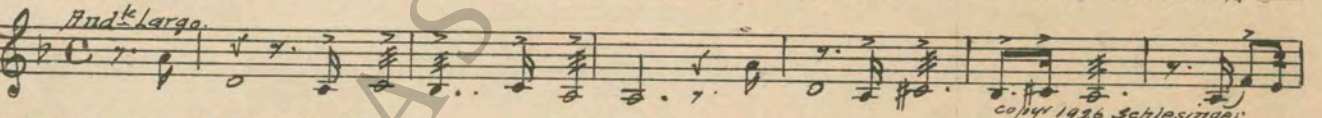
SEGUE: Memories Eternal (Torke)



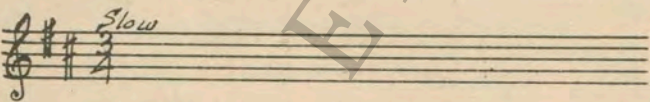
23 (Title) I'VE GOT NO SWEETHEART Serenade (Pierne) ¾ Min.



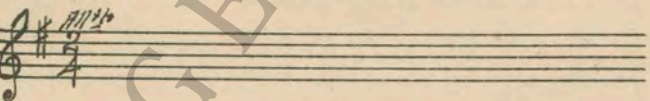
24 (Action) FADE-OUT AS BOY WALKS FROM LOVERS IN HOUSE Facing Death (Bece) (BLACK) ¾ Min.



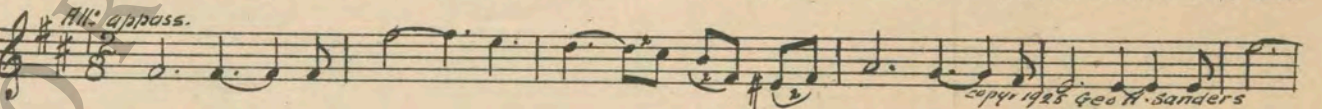
25 (Action) FADE-OUT OF DON SANDOVAL Repeat No. 22 (WHITE) 1½ Min.



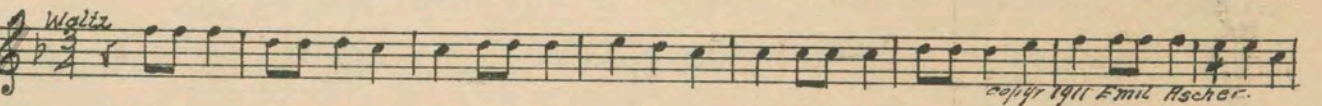
26 (Action) CLOSE-UP OF NORMA TALMADGE AT DOOR AFTER LOVER LEAVES Repeat No. 17 (LT. GREEN) 1¼ Min.



27 (Action) PROPRIETOR WALKS INTO ROOM Defiant Love (Schad) (LT. BLUE) 1½ Min.



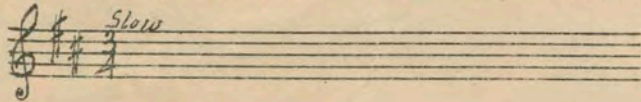
28 (Action) DOOR OPENS Espana Waltz (Waldteufel) ¾ Min.



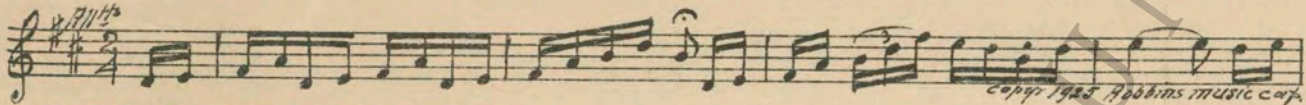
29 (Title) NEXT MORNING Manzanillo (Robyn) ¾ Min.



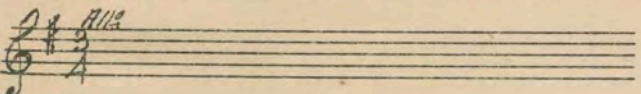
30 (Action) NORMA TALMADGE THROWS DICE Repeat No. 22 (WHITE) 3¼ Min.



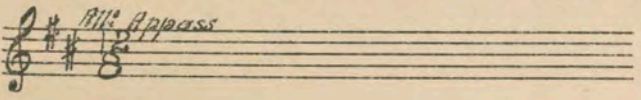
31 (Title) SHANGHAI CHARLEY'S Moon Madness (Lodge) 2½ Min.



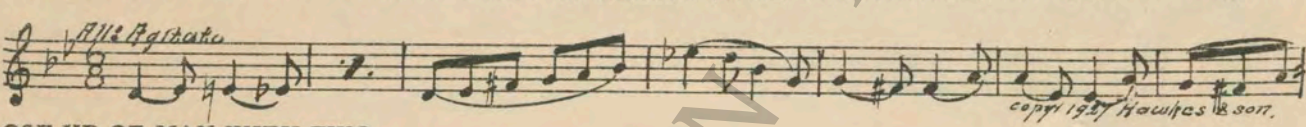
32 (Action) GIRL AT GAMBLING TABLE WINNING CHIPS Repeat No. 20 (RED) 2 Min.



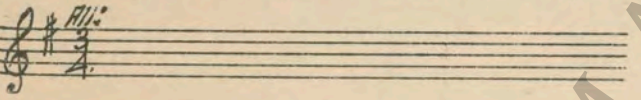
33 (Action) DON SANDOVAL WALKS OUT OF GAMBLING HOUSE Repeat No. 27 (LT. BLUE) 1 Min.



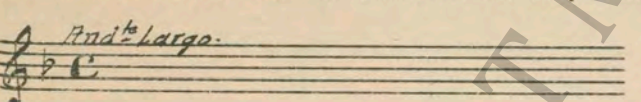
34 (Title) WILL YOU STOP The Rebellion (Patou) ½ Min.



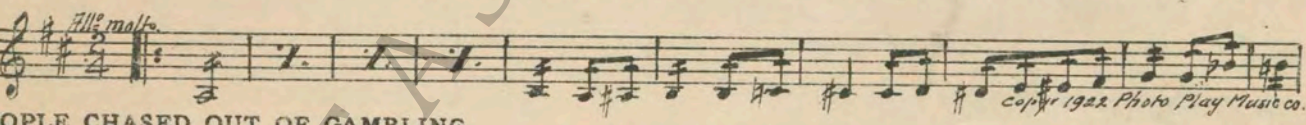
35 (Action) CLOSE-UP OF MAN WITH TWO REVOLVERS Repeat No. 20 (RED) 2¼ Min.



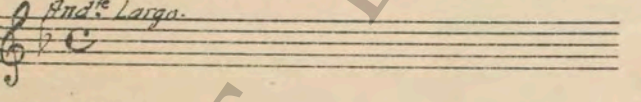
36 (Action) DEALER CHANGES DICE Repeat No. 24 (BLACK) 1½ Min.



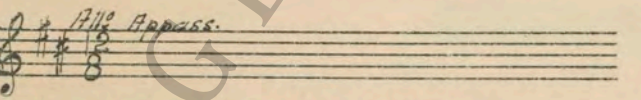
37 (Action) BOY SHOWS DICE TO PEOPLE IN ROOM Incid. Symphony No. 13 (Casini) ¾ Min.



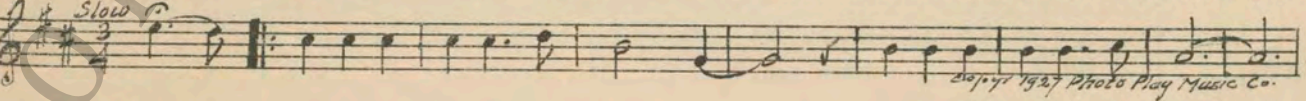
38 (Action) PEOPLE CHASED OUT OF GAMBLING HOUSE Repeat No. 24 (BLACK) 1¼ Min.



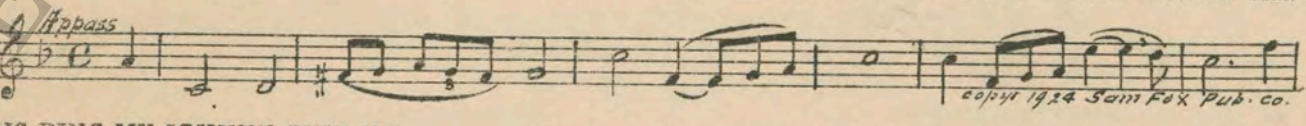
39 (Title) WORRY NOT Repeat No. 27 (LT. BLUE) 2¼ Min.



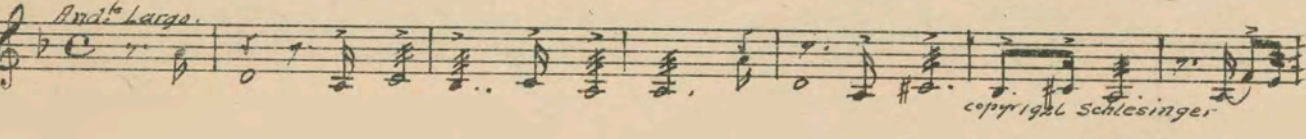
40 (Action) NORMA TALMADGE WALKS BACK TO LOVER Spanish Love Theme (Marquardt) (WHITE) 1¼ Min.



41 (Title) BUT I'M SO SCARED The Awakening (Zamecnik) 1 Min.



42 (Title) THIS RING MY JOHNNY GIVE ME Facing Death (Becca) (BLACK) 1¼ Min.



43 (Action) FADE-OUT OF COMMANDANTE WITH MONEY Reverie (Drumm) 1½ Min.

Musical notation for item 43: Treble clef, key signature of one sharp (F#), common time (C). Tempo marking: *And^{te}*. Copyright: 1919 Drumm.

44 (Action) SHADOW SHOWS ON SCREEN Diabolical Allegro (Bergunker) (RED) 1¼ Min.

Musical notation for item 44: Treble clef, key signature of one sharp (F#), 3/4 time. Tempo marking: *All^o*. Performance instruction: *2 sumpia glass*. Copyright: 1927 G. Schirmer Inc.

45 (Action) DON SANDOVAL DRINKS Misterioso Fantastico (Bece) 2 Min.

Musical notation for item 45: Treble clef, key signature of one sharp (F#), 3/4 time. Tempo marking: *And^{te}*. Copyright: 1927 Edw. B. Marks.

46 (Action) DON SANDOVAL APPLAUDS Repeat No. 44 (RED) 1½ Min.

Musical notation for item 46: Treble clef, key signature of one sharp (F#), 3/4 time. Tempo marking: *All^o*.

47 (Title) WHAT YOU WANT Descriptive Agitato No. 38 (Boehnlein) 1 Min.

Musical notation for item 47: Treble clef, key signature of two flats (Bb), 2/4 time. Tempo marking: *Agitato*. Copyright: 1923 Belwin Inc.

48 (Title) YOU WILL TELL HIM Repeat No. 42 (BLACK) ¾ Min.

Musical notation for item 48: Treble clef, key signature of two flats (Bb), common time (C). Tempo marking: *And^{te} Largo*.

49 (Action) CLOSE-UP OF LOVER WITH SOLDIERS AFTER VILLAINS HIDE Repeat No. 40 (WHITE) 1¼ Min.

Musical notation for item 49: Treble clef, key signature of one sharp (F#), 2/4 time. Tempo marking: *Slow*.

50 (Title) THIS IS GOOD-BYE Symphonic Incidentals No. 6 (Marquardt) 4/4 Min.

Musical notation for item 50: Bass clef, key signature of two flats (Bb), 2/4 time. Tempo marking: *And^{te} con gravitas*. Copyright: 1927 Music Buyers Co.

51 (Action) NOTE: Timpany taps for feet. FADE-OUT AFTER TITLE: "YOU BETCHA MY LIFE" Mysterious March (Borch) 1 Min.

Musical notation for item 51: Treble clef, key signature of two flats (Bb), 2/4 time. Tempo marking: *Marcia*. Copyright: 1926 Hawkes & Son.

52 (Action) SCENE SHOWING HOUSE Manzanillo (Robyn) ½ Min.

Musical notation for item 52: Treble clef, key signature of one sharp (F#), 2/4 time. Tempo marking: *Mod^{to}*. Copyright: 1907 Leo Feist Inc.

53 (Action) SOLDIERS RIDE INTO HOUSE Melida (Elie) (LT. GREEN) 2¼ Min.

Musical notation for item 53: Treble clef, key signature of one sharp (F#), 2/4 time. Tempo marking: *All^o*. Copyright: 1927 Carl Fischer.

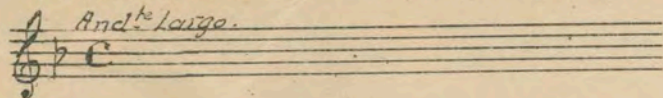
54 (Title) MAYBE I LIKE YOU VERY MUCH Misterioso Irresoluto (Langey) 1¼ Min.

Musical notation for item 54: Treble clef, key signature of one sharp (F#), 3/4 time. Tempo marking: *Mod^{to}*. Copyright: 1918 G. Schirmer Inc.

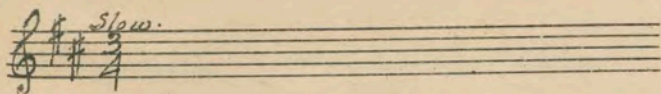
55 (Action) DON SANDOVAL KNOCKS GLASS OF WINE OUT OF NORMA TALMADGE'S HAND. Defiant Love (Schad) (LT. BLUE) 1½ Min.

Musical notation for item 55: Treble clef, key signature of one sharp (F#), 3/4 time. Tempo marking: *All^o Appass*. Copyright: 1925 Geo. H. Sanders.

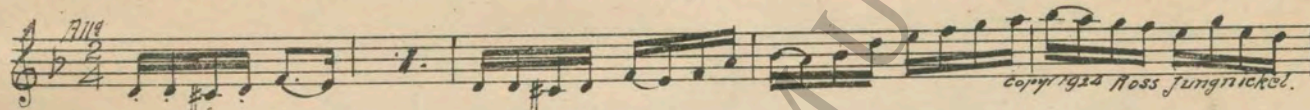
- 56 (Action) DON SANDOVAL STOPS LAUGHING AT NORMA TALMADGE Repeat No. 42 (BLACK) ½ Min.



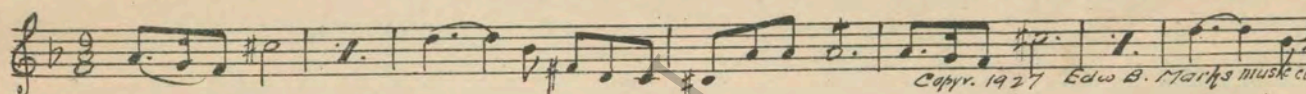
- 57 (Action) LOVER WALKS TO NORMA TALMADGE Repeat No. 40 (WHITE) 1 Min.



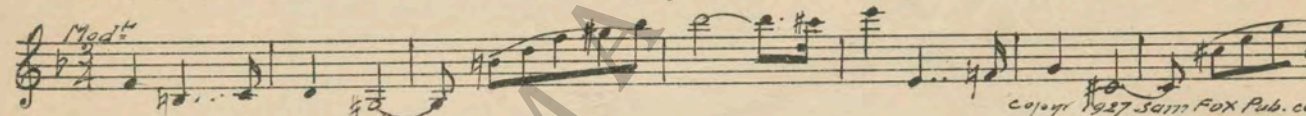
- 58 (Action) SERVANT THROWS PLANT FROM BALCONY ON LOVER Furioso No. 89 (Berge) 3 Min.



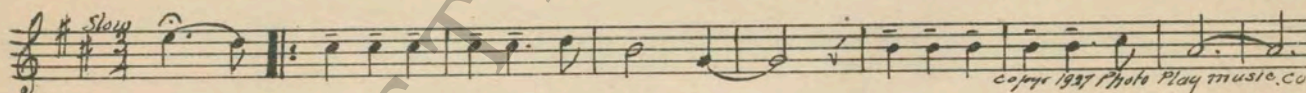
- 59 (Action) COURTYARD SCENE AFTER LOVER IS CAPTURED Grand Dramatic Scene (May) 1¾ Min.



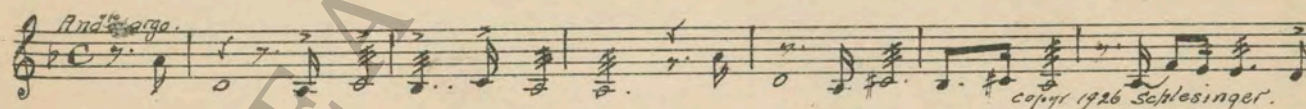
- 60 (Action) NORMA TALMADGE RUNS TO AND EMBRACES LOVER Reproach (Zamecnik) 1½ Min.



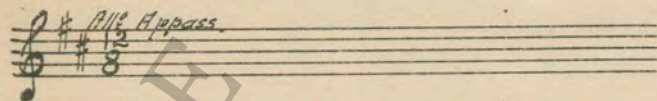
- 61 (Action) NORMA TALMADGE GOES FROM DON SANDOVAL TO LOVER Spanish Love Theme (Marquardt) (WHITE) 1¼ Min.



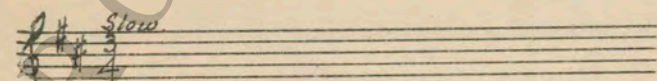
- 62 (Action) SOLDIERS RAISE RIFLES Facing Death (Bece) (BLACK) ¾ Min.



- 63 (Title) THE BEST DAMN CABALLERO Repeat No. 55 (LT. BLUE) 1¼ Min.



- 64 (Action) SERVANT WALKS ON TO DON SANDOVAL AND OFF Repeat No. 61 (WHITE) 1½ Min.



NOTE: Begin slow, then faster to screen action.
THE END

Proper rest period is Nos. 26 to 34 inclusive.

NOTE: "Diabolical Allegro" by Bergunker, Nos. 5 and 20, etc., in the score should never be played fast, and not like an Agitato. A cynical threat is desired.

The repetition of numbers in this cue sheet is simplified by the use of the "LUZ" SYMPHONIC COLOR GUIDE, sold by Music Buyers Corporation, 1520 Broadway, New York City. The color suggested for repetition of numbers designates the Mood or Emotion, and is used as a code for such repetitions.
Country of Origin, U. S. A.

Complete orchestrations and single piano parts of each separate number contained hereon, can be purchased from CAMEO MUSIC SERVICE CORPORATION, 316-317 WEST 47TH STREET, NEW YORK CITY.