

Thematic Music  Cue Sheet

M.J. MINTZ (PATENT)
JULY 31, 1923

ADOLPH ZUKOR and JESSE L. LASKY
present

CLARA BOW

in
"THE FLEET'S IN!"

with

James Hall

A Malcolm St. Clair Production

Story and screen play by Monte Brice and J. Walter Ruben

B. P. Schulberg, General Manager, West Coast Productions

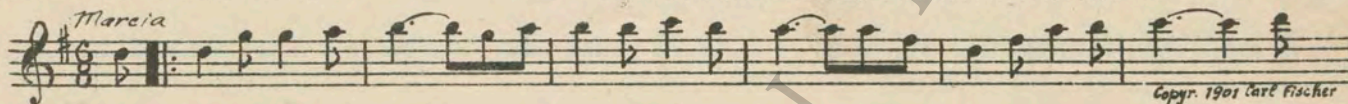
Compiled by James C. Bradford

Footage 6918 feet



A Paramount Picture

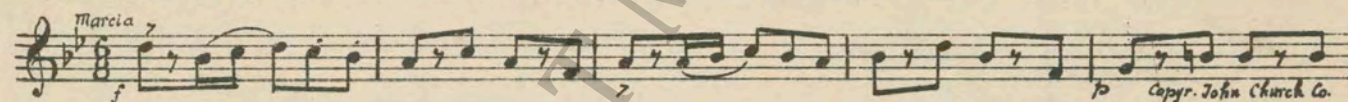
- 1 AT SCREENING Our Jackies (Lauredeau) 1 Min



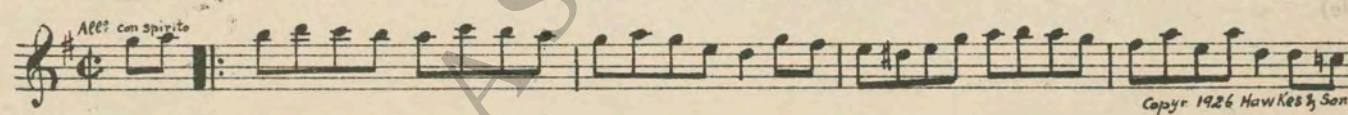
- 2 (Title) SAN FRANCISCO Enticing Beauty (Delille) 1/2 Min.



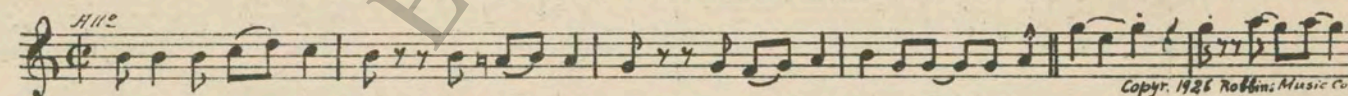
- 3 (Action) FLASH-BACK TO FLEET Jack Tar March (Sousa) 1 Min.



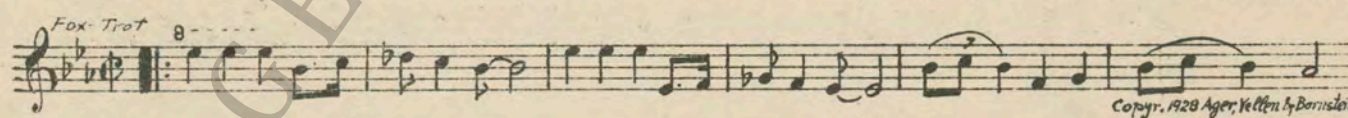
- 4 (Title) YOU'RE DISMISSED Fun On Deck (Howgill) 3/4 Min.



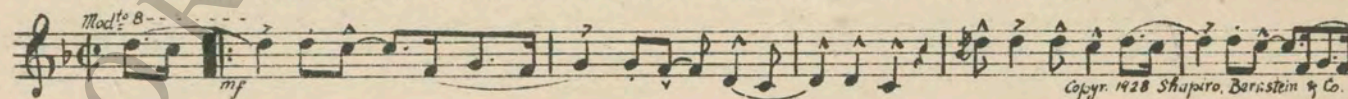
- 5 (Action) FLASH TO GIRLS WAITING ON WHARF Up and At 'Em (Pettis) 2 Min.



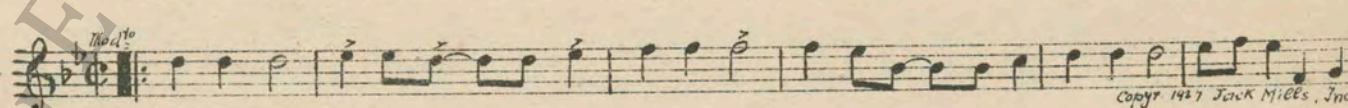
- 6 (Title) PEACHY, HERE'S A SWELL NECK PIECE.... Oh! You Have No Idea (Dougherty) 1 1/4 Min.



- 7 (Action) PEACHY STARTS OFF WITH HER
NUMEROUS PACKAGES PEACHY THEME: She's A Great, Great Girl (Woods) 3 Min.



- 8 (Title) WHAT ABOUT Following You Around (Kahu) 1 Min.



- 9 (Action) PEACHY DISAPPEARS IN DOORWAY Puppets (Bierman) 1/2 Min.



10 (Action) ROSELAND ELECTRIC LIGHT SIGN The Varsity Drag (Henderson) 2 3/4 Min.

Musical notation for 'The Varsity Drag' (Henderson), marked *Mod^{to}*. Copyright 1927, De Sylva, Brown & Henderson.

11 (Action) EDDIE SHOWS PHOTOGRAPHS OF GIRL FRIENDS That's My Weakness Now (Green) 2 Min.

Musical notation for 'That's My Weakness Now' (Green), marked *Brightly* and *mf*. Copyright 1928 Green & Stept.

12 (Action) DANCING STOPS Rustic Caprice (St. Clair) 3/4 Min.

Musical notation for 'Rustic Caprice' (St. Clair), marked *Acc^{to} mod^{to}*. Copyright 1917 Sam Fox.

13 (Action) DANCING STARTS AGAIN Rain or Shine (Ager) 1 1/4 Min.

Musical notation for 'Rain or Shine' (Ager), marked *Mod^{to}* and *mf*. Copyright 1928 Ager, Yellen & Bornstein.

14 (Action) DANCE FINISHES Flocons de Neige (Bradford) 1/4 Min.

Musical notation for 'Flocons de Neige' (Bradford), marked *Brightly* and *mf*. Copyright 1925 Robbins Music Corp.

15 (Action) MOONLIGHT WALTZ STARTS Early In the Morning (Davidson) 1/2 Min.

Musical notation for 'Early In the Morning' (Davidson), marked *Lento*. Copyright 1918 M. Witmark & Sons.

16 (Action) LIGHTS UP Repeat Peachy Theme No. 7 3/4 Min.

Musical notation for 'Repeat Peachy Theme No. 7', marked *Mod^{to}*.

17 (Action) DANCING STARTS AGAIN Here Comes the Show Boat (Rose) 1 1/2 Min.

Musical notation for 'Here Comes the Show Boat' (Rose), marked *Hot Jazz Dance*. Copyright 1927 Shapiro, Bernstein & Co.

18 (Title) WELL, I DONE IT AGAIN I'm Walkin' On Air (Dougherty) 1 1/2 Min.

Musical notation for 'I'm Walkin' On Air' (Dougherty), marked *Mod^{to}*. Copyright 1927 Ager, Yellen & Bornstein.

19 (Action) LADIES DRESSING ROOM I Just Roll Along (De Rose) 1 3/4 Min.

Musical notation for 'I Just Roll Along' (De Rose), marked *Mod^{to}*. Copyright 1927 Irving Berlin.

20 (Action) SAILOR KNOCKED DOWN Commotion (Minot) 3/4 Min.

Musical notation for 'Commotion' (Minot), marked *Acc^{to} mod^{to}*. Copyright 1927 Belwin, Inc.

21 (Action) PEACHY SLAPS "SEARCHLIGHT" Chatter (Kahn) 3/4 Min.

Musical notation for 'Chatter' (Kahn), marked *Tempo Rubato* and *p-mf*. Copyright 1926 Senneman Music Co.

22 (Title) THIS IS THE FIRST TIME LOVE THEME: Beloved (Kahn) 3 Min.

Waltz
mf
8
Copyright 1928 Irving Berlin, Inc.

23 (Title) THIS IS WHERE I LIVE Climbing Up the Ladder of Love (Greer) 3 Min.

Mod^{to}
p-p-f
8
Copyright 1926 Robbins Music Co.

24 (Title) WELL, THIS IS IT Repeat Peachy Theme No. 7 1/2 Min.
NOTE: Play very quietly throughout entire sequence.

Mod^{to}

25 (Title) I WANTED A GLASS OF WATER Funny Faces (Ring-Hager) 1/4 Min.

Mod^{to}
mf
8
Copyright 1926 Sam Fox

26 (Title) I SUPPOSE THAT WAS YOUR MOTHER Pastime (Clutsam) 3 Min.

Acc^{no}
p
8
Copyright 1926 Hawkes & Son

27 (Action) MOTHER FALLS ASLEEP Little Mother (Rapee) 1/2 Min.

Lento
p-mf
8
Copyright 1928 Sherman, Clay & Co.

28 (Action) MOTHER AWAKENS Just Like A Melody Out of the Sky (Donaldson) 2 1/2 Min.
NOTE: Play "PP" con sordini, strings only, in lazy tempo.

Mod^{to} espressivo
pp
8
Copyright 1928 Donaldson, Douglas & Sum 6 Co.

29 (Action) EDDIE KISSES PEACHY Dramatic Prelude (Schad) 1/2 Min.

And^{te} sost.
mf
8
Copyright 1925 S. Schirmer

30 (Action) EDDIE SITS ON DARK STAIRS After My Laughter Came Tears (Tobias) 1 Min.

Espressivo
p-f
8
Copyright 1928 Shapiro Bernstein & Co.

31 (Action) DECK OF SHIP So Blue (Henderson) 1/2 Min.

Espressivo
p-f
8
Copyright 1927 De Sylva, Brown & Henderson

32 (Action) EDDIE STARTS TO SIGNAL Paragraphs (Fall) 1/2 Min.
NOTE: Play very quietly throughout entire sequence.

Acc^{no}
mf
8
Copyright 1928 Emil Ascher, Inc.

33 (Action) CAPTAIN SPEAKS TO EDDIE Sesqui-Centennial Exposition March (Sousa) 1½ Min.

Musical notation for 'CAPTAIN SPEAKS TO EDDIE' in 2/4 time, marked *Marcia* and *p*. Copyright 1924 Sam Fox.

34 (Action) CAPTAIN LEAVES BRIDGE Jingles (Zamecnik) ¾ Min.

Musical notation for 'CAPTAIN LEAVES BRIDGE' in 2/4 time, marked *Allegro* and *p*. Copyright 1928 Sam Fox.

35 (Action) DANCE HALL Auf Wiederseh'n (Greenberg) 1¾ Min.

Musical notation for 'DANCE HALL' in 2/4 time, marked *Valse* and *mf*. Copyright 1928 Jerome H. Remick & Co.

36 (Action) PEACHY LEAVES DRESSING ROOM—
GREETED BY SAILOR BOYS Repeat Peachy Theme No. 7 2¼ Min.

Musical notation for 'PEACHY LEAVES DRESSING ROOM' in 2/4 time, marked *Mod^{to}*.

37 (Action) SAILOR DISCOVERS NOTE IN HIS POCKET. Shenandoah (Bendel) ½ Min.

Musical notation for 'SAILOR DISCOVERS NOTE IN HIS POCKET' in 2/4 time, marked *Mod^{to}* and *mf*. Copyright Sam Fox.

38 (Action) INSERT—NOTE Forgive Me (Ager) ½ Min.

Musical notation for 'INSERT—NOTE' in 2/4 time, marked *Espressivo* and *p-f*. Copyright 1927 Ager Yellen & Bornstein.

39 (Action) PEACHY AND EDDIE MEET Repeat Love Theme No. 22 2¼ Min.

Musical notation for 'PEACHY AND EDDIE MEET' in 2/4 time, marked *Waltz*.

40 (Action) "SEARCHLIGHT" APPEARS ON ROOF—
FIGHT STARTS Excitement (Breil) 3 Min.

Musical notation for '"SEARCHLIGHT" APPEARS ON ROOF' in 2/4 time, marked *Agitato* and *mf*. Copyright 1922 Sonneman Music Co.

41 (Title) NEXT MORNING DECKS WERE CLEARED... Marche Mignonne (Poldini) 1¾ Min.

Musical notation for 'NEXT MORNING DECKS WERE CLEARED' in 2/4 time, marked *Leggiero* and *p*. Copyright 1920 G. Schirmer.

42 (Action) PEACHY WALKS TOWARD JUDGE'S DESK... To A Wild Rose (MacDowell) 3 Min.

Musical notation for 'PEACHY WALKS TOWARD JUDGE'S DESK' in 2/4 time, marked *Semplice* and *p*. Copyright 1923 A. P. Schmidt Co.

43 (Title) I TOLD THE JUDGE I WAS Amorous Adventure (Bradford) 1¼ Min.

Musical notation for 'I TOLD THE JUDGE I WAS' in 2/4 time, marked *Tranquillo* and *p*. Copyright 1928 Sonneman Music Co.

44 (Action) MOTHER ALONE IN HALLWAY,
HEARTBROKEN Mother (Romberg) 1 Min.

Musical notation for 'MOTHER ALONE IN HALLWAY' in 2/4 time, marked *Valse Lento* and *p*. Copyright 1916 G. Schirmer.

45 (Title) THAT PEACHY KID Repeat Love Theme No. 22 1 Min.

46 (Action) WHARF Repeat Peachy Theme No. 7 1 Min.

THE END

Country of Origin, U. S. A.

Complete orchestrations and single piano parts of each separate number contained hereon, can be purchased from CAMEO MUSIC SERVICE CORPORATION, 315-317 WEST 47TH STREET, NEW YORK CITY.