



JOHN GILBERT
 in
"FOUR WALLS"

with
JOAN CRAWFORD
 Vera Gordon, Louis Natheaux, Carmel Myers
 A William Nigh Production
 Based on the play by Dana Burnet and George Abbott
 Continuity by Alice D. G. Miller
 Directed by William Nigh
 Music compiled by Ernst Luz

A METRO-GOLDWYN-MAYER PICTURE

Length of film 8 Reels, 6575 feet. Maximum projection time 1 Hour 25 Minutes

- 1 AT SCREENING Four Walls (Jolson) 1 1/4 Min.

Mod^{to}

 Copyr. 1927 Irving Berlin

- 2 (Title) **IN NEW YORK'S LOWER EAST SIDE** Symp. Incidentals No. 14 (Marquardt) RED 1 1/4 Min.

All^o mod^{to}

 Copyr. 1928 Music Buyers Corp.

- 3 (Title) **SPECIALLY SOME OTHER GUY'S** Four Walls (Jolson) Chorus only 1 Min.

mod^{to}

 Copyr. 1927 Irving Berlin

- 4 (Action) **POSTER "SINNERS COME TO ME"** Repeat No. 2 RED 1/2 Min.

All^o mod^{to}

- 5 (Title) **THERE'S DUKE ROMA** Repeat No. 3 "Four Walls" chorus only 1/2 Min.

mod^{to}

- 6 (Action) **DUKE ROMA WITH CUP COFFEE IN HANDS** Repeat No. 2 RED 2 Min.

All^o mod^{to}

- 7 (Action) **DUKE ROMA STANDS UP** The Grass Grows Greener (Dougherty) 1/2 Min.

Mod^{to}

 Copyr. 1928 Ager Yellert & Bornstein

- 8 (Action) **SEGUE QUICK AT SHOT** Incid. Sym. No. 32 (Kempinski) LT. BLUE 1/2 Min.

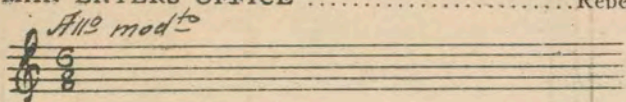
All^o

- 9 (Action) **JOHN GILBERT SITS DOWN—HAS NEWSPAPER** Superstition (Varnier) 1 Min.

Molto lento

 Copyr. 1928 Emil Ascher

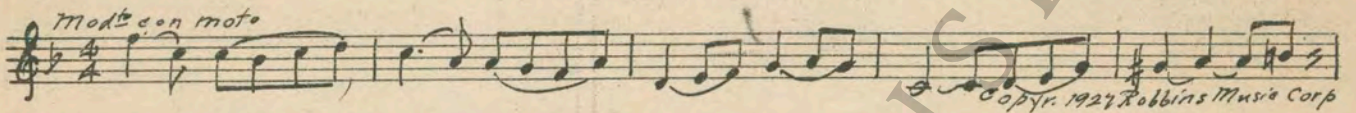
10 (Action) **MAN ENTERS OFFICE** Repeat No. 2 RED 2 Min.



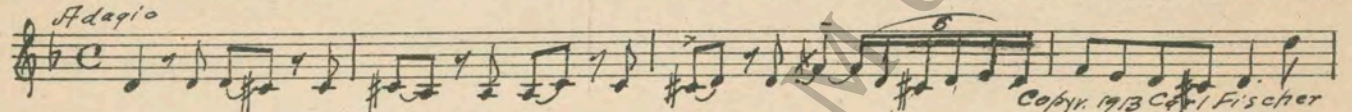
11 (Action) **STREET SCENE, GILBERT HANDCUFFED** Mysterious Tension (Axt) 1 Min.



12 (Action) **GILBERT IN JAIL CELL** Joyous Appassionato (Carbonara) 1 1/4 Min.



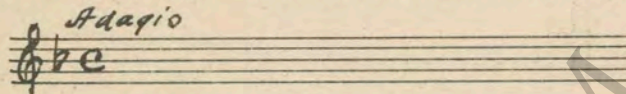
13 (Action) **LETTER ON SCREEN** Kol Nidre (Roberts) 1 1/2 Min.



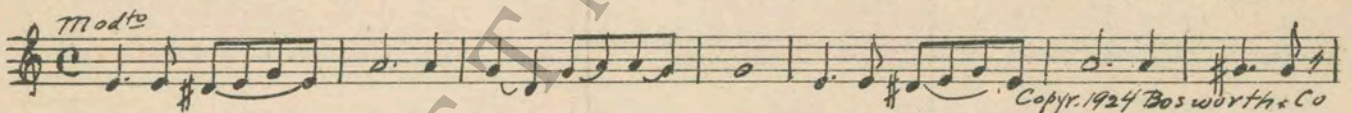
14 (Action) **FADE-OUT OF PRISON CELL** Shrine in the Wood (Carr) BROWN 2 1/2 Min.



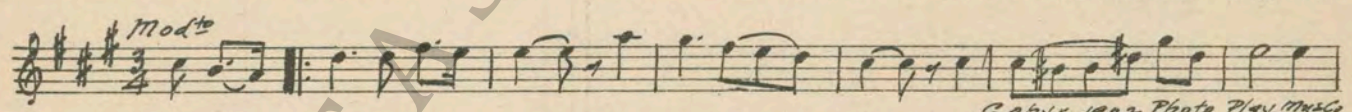
15 (Action) **FADE-OUT AFTER "AND THERE ARE NO WALLS"** Repeat No. 13 "Kol Nidre" 1 Min.



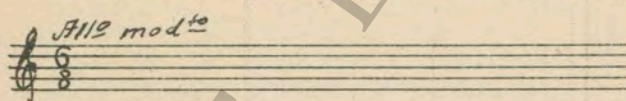
16 (Action) **MOTHER LEANING OUT WINDOW** The Wanderer's' Return (Ketelby) WHITE 2 Min.



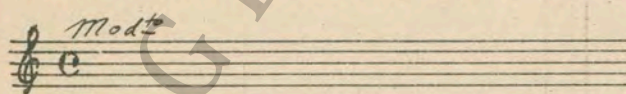
17 (Title) **BERTHA FIXED THE FLOWERS** Dear Heart (Matten) 2 1/4 Min.



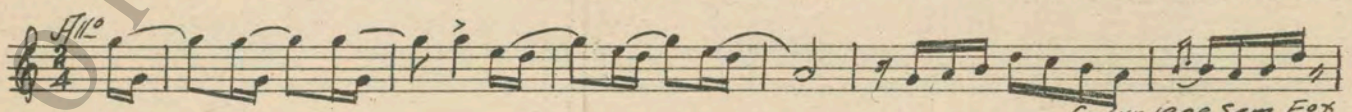
18 (Action) **DETECTIVE SHOWS ON SCREEN** Repeat No. 2 RED 2 1/4 Min.



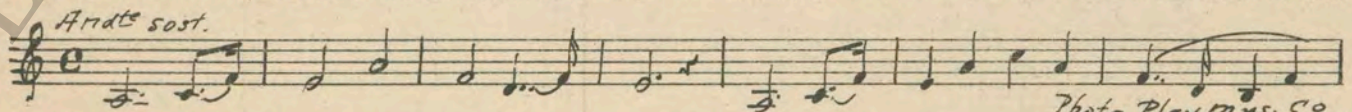
19 (Title) **I WON'T CRY OVER THAT EITHER** Repeat No. 16 WHITE 1 Min.



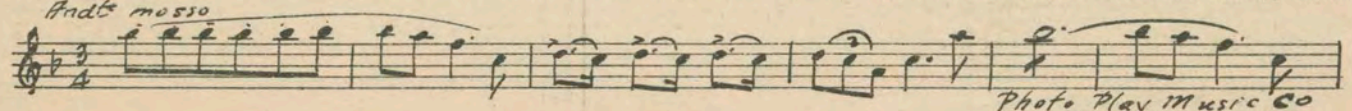
20 (Title) **GEFULTTE FISH** Spirit of Youth (Zamecnik) 1 1/4 Min.



21 (Action) **GILBERT WASHING HANDS** Heavy Char. Theme (Verdi) 2 Min.



22 (Title) **YOU'RE HUNGRY, AIN'T IT** Love Theme or Aria (Verdi) 2 1/2 Min.



23 (Title) BEAT IT. GET OUT Appassionato in A Minor (Savino) DARK BLUE..... ½ Min.

Musical notation for item 23, marked *Mosso*. Copyright 1925 Robbins Music Corp.

24 (Action) DETECTIVE SHOWS ON SCREEN Repeat No. 14 BROWN 1¾ Min.

Musical notation for item 24, marked *Modto*.

25 (Action) GILBERT WALKS TO TABLE Eili, Eili (Katz) 1 Min.

Musical notation for item 25, marked *Andte*. Copyright 1919 Carl Fischer

26 (Action) END OF MOTHER'S PRAYER Gaiety (Savino) 1¾ Min.

Musical notation for item 26, marked *Allo con spirito*. Copyright 1924 Robbins Music Corp.

27 (Action) GILBERT BUYING FLOWERS Repeat No. 21 Hy. Char. Theme 1½ Min.

Musical notation for item 27, marked *Andte sost.*

28 (Action) GILBERT ENTERS GIRL'S ROOM Repeat No. 22 "Love Theme or Aria" 3 Min.

Musical notation for item 28, marked *Andte mosso*.

29 (Action) GIRL WALKS TO PIANO The Prisoner's Song (Massey) ¾ Min

Musical notation for item 29, marked *Waltz*. Copyright 1925 Shapiro, Bernstein & Co

30 (Action) NOTE: Imitate self-player piano. GILBERT TEARS PIANO ROLL Repeat No. 23 DARK BLUE 5 Min.

Musical notation for item 30, marked *Mosso*.

31 (Action) FADE-CUT AFTER "ROTTEN, AM I" Repeat No. 17 "Dear Heart" 2½ Min.

Musical notation for item 31, marked *Modto*.

32 (Action) PLAY ONCE AND SEGUE Repeat No. 16 WHITE 2 Min.

Musical notation for item 32, marked *Modto*.

33 (Action) STREET SCENES AFTER GILBERT ON ROOF Driftwood (Lyman) 3 Min.

Musical notation for item 33, marked *Modto*. Copyright 1928 Robbins Music Corp.

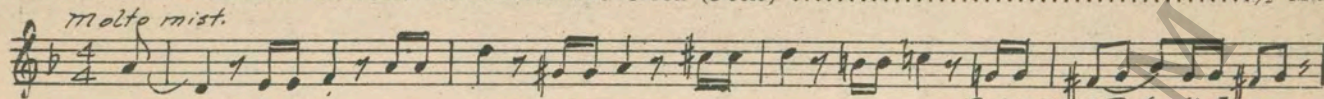
34 (Title) NOTE: "PP" at roof scenes—Watch violin. COME ON, I WANT TO GIVE Repeat No. 21 "Hy. Char. Theme" 1½ Min.

Musical notation for item 34, marked *Andte sost.*

35 (Action) VIOLINISTS BEGIN TO PLAY Who Wouldn't Be Blue (Burke) 3 Min.

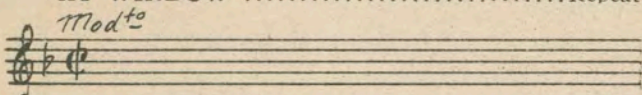
Musical notation for item 35, marked *Modto*. Copyright 1928 Waterson, Berlin & Snyder

36 (Action) STREET SCENE (SEGUE QUICK)The Crook (Peete) ½ Min.

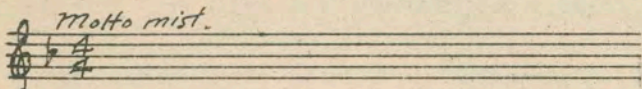


Copyr. 1927 Belwin Inc.

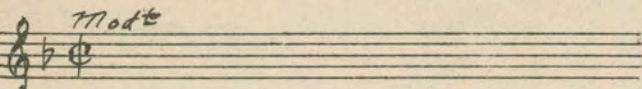
37 (Action) END OF STREET SCENE AFTER MAN AT WINDOWRepeat No. 5 "Four Walls" 1 Min.



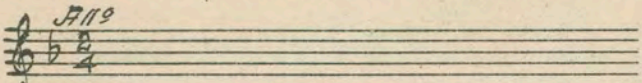
38 (Action) MEN IN ROOM UPSTAIRSRepeat No. 36 "The Crook" ¾ Min.



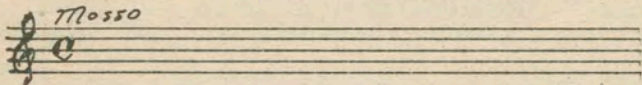
39 (Title) START THE MUSICRepeat No. 5 "Four Walls" ¾ Min.



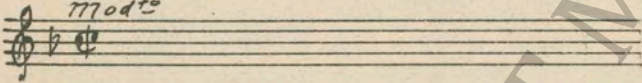
40 (Action) GILBERT KISSES GIRLRepeat No. 8 LT. BLUE ½ Min.



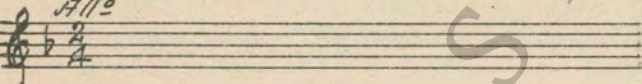
41 (Action) GILBERT CARRIES GIRL ON ROOFRepeat No. 23 DARK BLUE 1¼ Min.



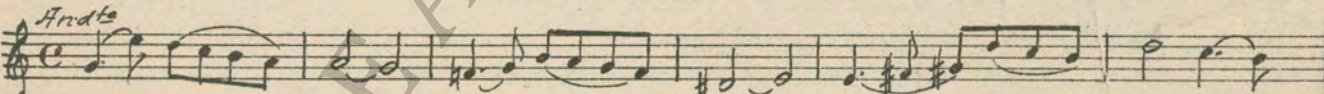
42 (Title) YOU HAD A GREAT IDEARepeat No. 5 "Four Walls" Chorus only 1 Min.



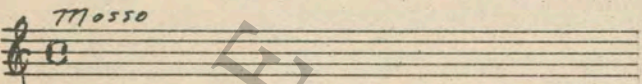
43 (Action) GIRL ABOUT TO KISS GILBERTRepeat No. 8 LT. BLUE ¾ Min.



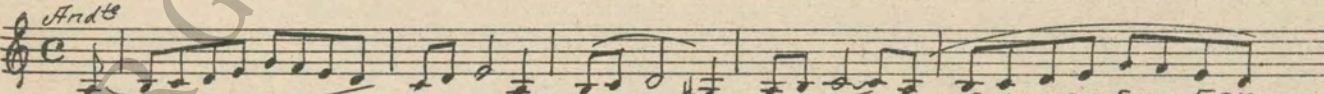
44 (Action) MAN THROWN OVER ROOFReverie D'Automne (Golden) 3½ Min.



45 (Action) MOTHER SHOWS AFTER "BECAUSE I WAS WITH HIM"Repeat No. 23 DARK BLUE 1 Min.

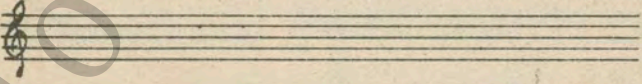


46 (Title) I TOLD YOU MONK FELL OFFDram. Tension No. 6 (Zamecnik) 2 Min.



Copyr. 1919 Sam Fox

47 (Action) GILBERT WALKS TO WINDOWRepeat No. 1 "Four Walls" Intro. Verse and Choruses.



THE END

Proper Orchestral rest period is Numbers 24 to 32 inclusive.
NOTE:—The repetition of numbers in this cue sheet is simplified by the use of the "LUZ" SYMPHONIC COLOR GUIDE, sold by Music Buyers Corporation, 1520 Broadway, New York City. The color suggested for repetition of numbers designates the Mood or Emotion and is used as a code for such repetitions.
Country of Origin, U. S. A.

Complete orchestrations and single piano parts of each separate number contained hereon, can be purchased from CAMEO MUSIC SERVICE CORPORATION, 315-317 WEST 47TH STREET, NEW YORK CITY.