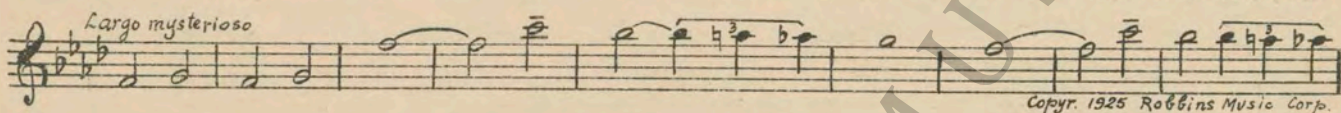


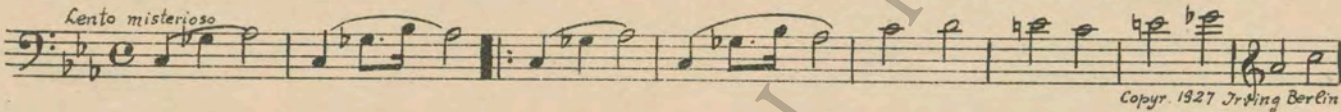
M.J. MINTZ (PATENT)  
JULY 31, 1923.

Richard A. Rowland  
presents  
"THE HAUNTED HOUSE"  
with  
CHESTER CONKLIN and THELMA TODD  
Compiled by James C. Bradford  
A FIRST NATIONAL PICTURE

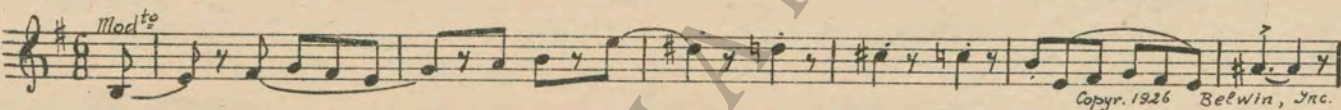
1 AT SCREENING ..... La Maison Isolee (Bradford) ..... 1 1/4 Min.



2 (Action) DIAL OF CLOCK ..... Haunted Nights (Jacquet) ..... 1 1/2 Min.



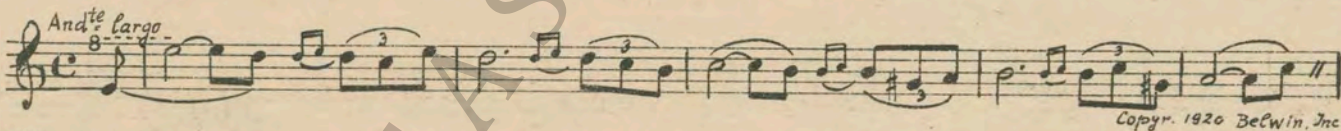
3 (Action) COUPLE TALKING ..... The Clown (Peele) ..... 1 1/4 Min.



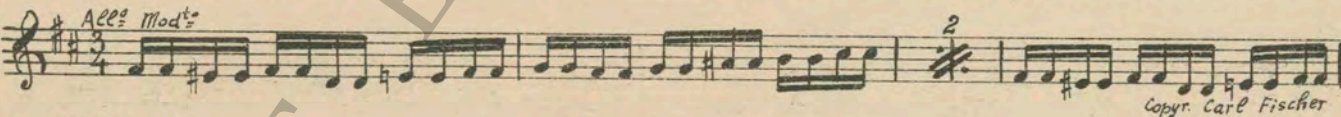
4 (Action) MAN APPEARS FROM DOOR ..... Despised (Zamecnik) ..... 4 Min.



5 (Title) SOME DAY A VEILED WOMAN ..... Patience Under Pain (Bece) ..... 1 1/2 Min.



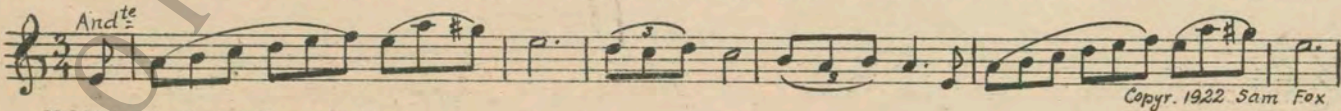
6 (Action) HOUR GLASS ..... Unfinished Symphony (Schubert) ..... 1 1/2 Min.



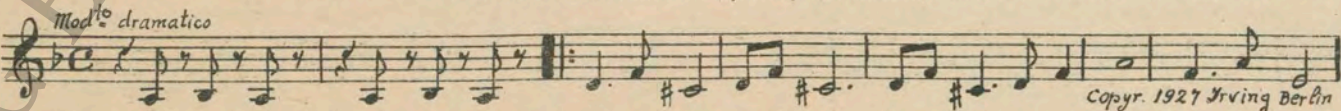
7 (Title) GET A TAXI ..... Dance of the Furies (Gluck) ..... 2 1/4 Min.



8 (Action) FIGURE OF WOMAN APPEARS IN WINDOW...A Gruesome Tale (Zamecnik) ..... 1 1/2 Min.



9 (Title) LOOK FOR AN OLD CABINET ..... Rhythmic Misterioso (Damesek) ..... 4 Min.



NOTE: Continue effects "PP"; add slamming of doors, clanking of chained feet crossing floor, etc.

10 (Title) **GOODNESS** ..... Premonition (Zamecnik) ..... 1½ Min.

*Mod<sup>to</sup>*  
A single staff of music in bass clef, 3/4 time signature. The melody consists of eighth and quarter notes with a few slurs.  
Copyr. 1925 Sam Fox

11 (Action) **HE CLOSES DOOR** ..... Silent Night (Rebikov) ..... ¾ Min.

*Targo pesante*  
A single staff of music in treble clef, 3/4 time signature. The melody is slow and features many slurs.  
Copyr. 1917 G. Schirmer

12 (Title) **JUST AS SOON AS I FIND** ..... Animated Agitato (Levy) ..... 1¼ Min.

*All<sup>o</sup> molto*  
A single staff of music in treble clef, 2/4 time signature. The melody is fast and rhythmic with many slurs.  
Copyr. 1927 Belwin Inc

13 (Action) **HAND ON DOOR KNOCKER** ..... Pizzicato Misterioso No. 30 (Minot) ..... ½ Min.

*Mod<sup>to</sup>*  
A single staff of music in treble clef, 2/4 time signature. The melody is slow and features many slurs.  
Copyr. 1916 S.M. Berg

NOTE: Produce three knocks and repeat.

14 (Title) **I MIGHT HAVE KNOWN** ..... Chatter (Kahn) ..... 1½ Min.

*All<sup>o</sup>*  
A single staff of music in treble clef, 2/4 time signature. The melody is fast and rhythmic with many slurs.  
Copyr. 1925 Sonne mann M.Co

15 (Action) **DOOR OPENS—DOCTOR APPEARS** ..... DOCTOR THEME: Tensive Misterioso (Peele) ..... 2¼ Min.

*Molto mod<sup>to</sup>*  
A single staff of music in treble clef, 4/4 time signature. The melody is slow and features many slurs and accents.  
Copyr. 1928 Belwin Inc

A single staff of music in treble clef, 4/4 time signature. The melody is slow and features many slurs and accents.

A single staff of music in treble clef, 4/4 time signature. The melody is slow and features many slurs and accents.

A single staff of music in treble clef, 4/4 time signature. The melody is slow and features many slurs and accents.  
Copyr. 1928 Belwin Inc

15 (Action) **CARETAKER APPEARS** ..... CARETAKER THEME: Misterioso Dramatico (Aborn) .. 1½ Min.

*And<sup>te</sup> misterioso*  
A single staff of music in treble clef, 3/4 time signature. The melody is slow and features many slurs.  
Copyr. 1921 Belwin Inc

A single staff of music in treble clef, 3/4 time signature. The melody is slow and features many slurs.

A single staff of music in treble clef, 3/4 time signature. The melody is slow and features many slurs.

A single staff of music in treble clef, 3/4 time signature. The melody is slow and features many slurs.  
Copyr. 1921 Belwin Inc

17 (Action) KNOCK ON DOOR AGAIN ..... Allegro Infernale (Aborn) ..... 2¼ Min.

Musical notation for item 17, featuring a treble clef, a key signature of one sharp (F#), and a 2/4 time signature. The tempo marking is *Mod<sup>to</sup>*. The music consists of a series of eighth and sixteenth notes. Copyright: 1921 Belwin Inc.

18 (Title) NOTE: Produce knocking effect. WHERE IS MY HUSBAND? ..... Omens (Schad) ..... 2¾ Min.

Musical notation for item 18, featuring a treble clef, a key signature of one sharp (F#), and a 2/4 time signature. The tempo marking is *All<sup>o</sup> mod<sup>to</sup>*. The music consists of eighth and sixteenth notes. Copyright: 1925 G. Schirmer

19 (Title) NOTE: Produce weird effects ad lib; add steamboat siren. I'M GOING TO FIND OUT ..... Repeat No. 6 "Unfinished Symphony" ..... 1¼ Min.

Musical notation for item 19, featuring a treble clef, a key signature of one sharp (F#), and a 3/4 time signature. The tempo marking is *All<sup>o</sup> mod<sup>to</sup>*. The notation is mostly blank with some initial notes. Copyright: 1925 G. Schirmer

20 (Action) DOCTORS APPEARS AGAIN ..... Repeat Doctor Theme No. 15 ..... 1½ Min.

Musical notation for item 20, featuring a treble clef, a key signature of one flat (Bb), and a 4/4 time signature. The tempo marking is *Molto mod<sup>to</sup>*. The notation is mostly blank. Copyright: 1925 G. Schirmer

21 (Action) MAN STARTS TO PLAY PIANO ..... Chop Sticks (Piano Solo) ..... ½ Min.

Musical notation for item 21, featuring a treble clef, a key signature of one flat (Bb), and a 2/4 time signature. The tempo marking is *All<sup>o</sup>*. The music consists of eighth notes. Copyright: 1925 G. Schirmer

22 (Title) DO YOU CALL THAT MUSIC? ..... Essence Grotesque (Lake) ..... 2 Min.

Musical notation for item 22, featuring a treble clef, a key signature of one flat (Bb), and a 3/8 time signature. The tempo marking is *Grotesque*. The music consists of eighth and sixteenth notes. Copyright: 1916 Carl Fischer

23 (Action) NOTE: Fake Violin bits against orchestra; catch rapping as previously. CARETAKER APPEARS ..... Repeat Caretaker Theme No. 16 ..... ½ Min.

Musical notation for item 23, featuring a treble clef, a key signature of one flat (Bb), and a common time signature (C). The tempo marking is *And<sup>te</sup> misterioso*. The notation is mostly blank. Copyright: 1925 G. Schirmer

24 (Action) KNOCKING OCCURS AGAIN ..... Tragedienne (Kay) ..... 1¼ Min.

Musical notation for item 24, featuring a treble clef, a key signature of one flat (Bb), and a 2/4 time signature. The tempo marking is *And<sup>te</sup> con moto*. The music consists of eighth and sixteenth notes. Copyright: 1925 Forster Music Co

25 (Action) GIPL APPEARS ON BALCONY ..... Love's Old Sweet Song (Molloy) ..... 1¾ Min.

Musical notation for item 25, featuring a treble clef, a key signature of one flat (Bb), and a 2/4 time signature. The tempo marking is *And<sup>te</sup>*. The music consists of eighth and sixteenth notes. Copyright: 1898 Carl Fischer

26 (Title) NOTE: Direct music for this sequence. STOP THAT ..... Repeat Caretaker Theme No. 16 ..... 1¼ Min.

Musical notation for item 26, featuring a treble clef, a key signature of one flat (Bb), and a common time signature (C). The tempo marking is *And<sup>te</sup> misterioso*. The notation is mostly blank. Copyright: 1925 G. Schirmer

27 (Action) HUSBAND PEEKS THROUGH KEYHOLE ..... Tarantella (Bohm) ..... 1¼ Min.

Musical notation for item 27, featuring a treble clef, a key signature of one flat (Bb), and a 6/8 time signature. The tempo marking is *All<sup>o</sup> vivo*. The music consists of eighth and sixteenth notes. Copyright: 1911 G. Schirmer

- 28 (Action) GIRL APPEARS ..... *Passionato* (Borch) ..... 1 3/4 Min.  
*And<sup>te</sup>*  

 Copyr. 1922 Hawkes & Son
- 29 (Action) KNOCKING ON DOOR AGAIN ..... *Weird Misterioso* (Kilenyi) ..... 1 1/4 Min.  
*Mod<sup>to</sup>*  

 Copyr. 1924 Belwin Inc
- 30 (Title) THEN I'M THROUGH ..... *Dramatic Appassionato* (Ciganeri) ..... 2 Min.  
*And<sup>te</sup> con moto*  

 Copyr. 1925 Belwin Inc.
- 31 (Title) HELP! HELP! ..... *Disturbance* (Zamecnik) ..... 3/4 Min.  
*Agitato*  

 Copyr. 1927 Sam Fox
- 32 (Action) DOCTOR APPEARS ..... *Tragic Andante* (Savino) ..... 2 1/4 Min.  
*And<sup>te</sup> tragico*  

 Copyr. 1923 G. Schirmer
- 33 (Title) WE PROMISED NOT TO COME OUT HERE... *Misterioso Furioso* (Affrunti) ..... 3/4 Min.  
*Molto*  

 Copyr. 1926 Belwin Inc
- 34 (Action) OLD MAN APPEARS ..... *Fourteen Fathoms Deep* (Lake) ..... 3/4 Min.  
*Mod<sup>to</sup>*  

 Copyr. Carl Fischer
- 35 (Title) BUT UNCLE HERBERT ..... *Serenade* (Chaminade) ..... 3/4 Min.  
*Mod<sup>to</sup>*  

 Copyr. 1911 G. Schirmer
- 36 (Title) COME AND SEE ME AT THE PALACE ..... *Pastime* (Clutsam) ..... 3/4 Min.  
*Alleg<sup>ro</sup>*  

 Copyr. 1916 Hawkes & Son
- 37 (Title) WELL, I THINK MISS MARTIN ..... *Lucky In Love* (Henderson) ..... 1 Min.  
*Mod<sup>to</sup>*  

 Copyr. 1927 De Sylva Brown & Henderson

THE END

Printed in U. S. A.

Complete orchestrations and single piano parts of each separate number contained hereon, can be purchased from CAMEO MUSIC SERVICE CORPORATION, 315-317 WEST 47TH STREET, NEW YORK CITY.