

Thematic Music Cue Sheet

M. J. MINTZ (PATENT)
JULY 31, 1923.

HONEYMOON

with
POLLY MORAN, HARRY GRIBBON
and "FLASH"

The dog extraordinary
Story by Lew Lipton
Adaptation by E. Richard Schayer
Continuity by George O'Hara
Directed by Robert A. Golden
Compiled by Ernst Luz

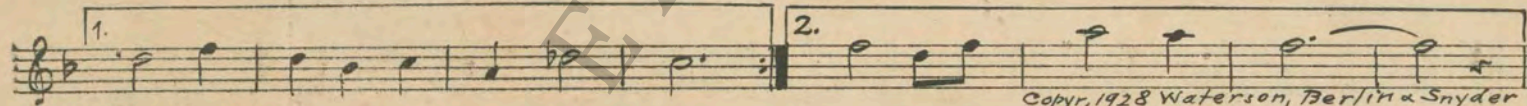
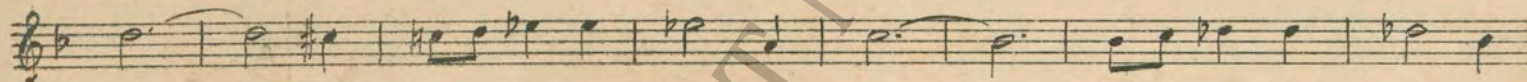
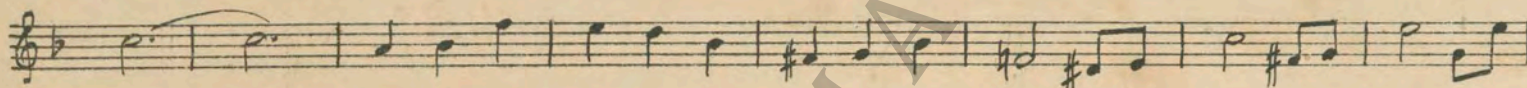
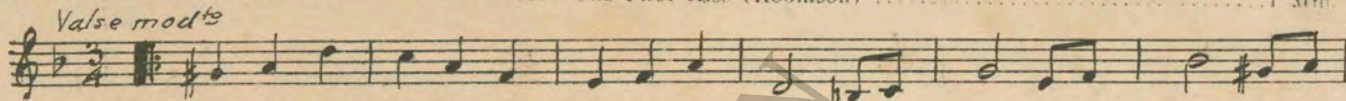


A METRO-GOLDWYN-MAYER PICTURE

Length of film 6 reels (4956 feet)

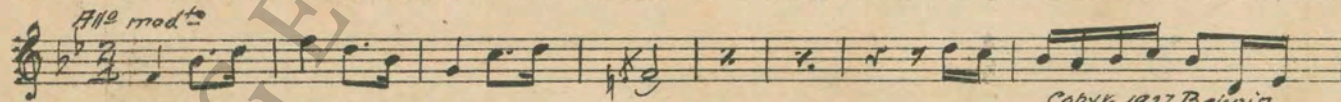
Maximum projection time 56 minutes

- 1 AT SCREENING The First Kiss (Robinson) 1 Min.



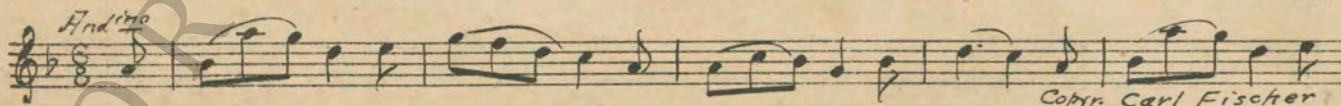
Copyr. 1928 Waterson, Berlin & Snyder

- 2 (Title) **MARRIAGE IS LIKE A TELEPHONE** Burlesque on "Wedding March" (Kempinski) 1 1/4 Min.



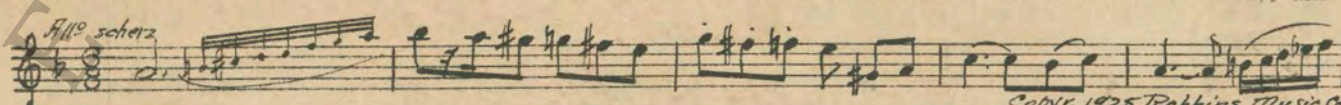
Copyr. 1927 Belwin

- 3 (Action) **POLLY MORAN (BRIDE) TURNS FACE TO CAMERA** Flower Song (Lange) 1 Min.



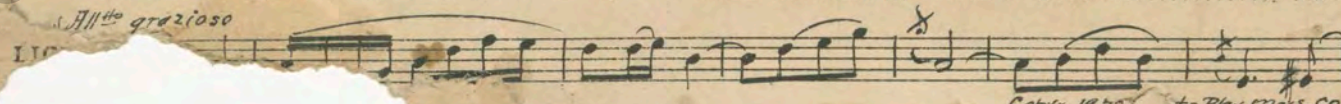
Copyr. Carl Fischer

- 4 (Title) **REMEMBER FLASH** Cynical Scherzando (Axt) (RED) 2 1/2 Min.



Copyr. 1925 Robbins Music Co

- 5 (Action) **BRIDE GOES UPSTAIRS** Pine Tree Echoes (Schoenfeld) 1 1/2 Min.



Copyr. 1925 Robbins Music Co

6 (Action) HUSBAND BRINGS DOG FROM GARAGE Joyful Hurry No. 1 (Baron) 2½ Min.

Musical notation for item 6: Treble clef, 2/4 time, *All.^o vivace*, *mf*. Copyright: 1927 M. BARON (BERLIN)

7 (Action) AUTO DRIVES FROM HOUSE Bridal Paths (Langford) 1½ Min.

Musical notation for item 7: Treble clef, 2/4 time, *All.^o ff* , *mp*. Copyright: 1923 MUSIC BUYERS CORP.

8 (Action) BLACK CAT SHOWS ON SCREEN Comic Hurry (O'Hare) 3¼ Min.

Musical notation for item 8: Treble clef, 2/4 time, *All.^o*. Copyright: OLIVER DITSON

9 (Title) I HOPE YOUR SOCKS Scherzo Silhouette (Marquardt) 2¼ Min.

Musical notation for item 9: Treble clef, 8/8 time, *All.^o*, *p*. Copyright: 1928 MUSIC BUYERS CORP.

10 (Action) DOG CATCHERS SHOW ON SCREEN Symphonic Incidentals No. 10 (Marquardt) 3 Min.

Musical notation for item 10: Treble clef, 2/4 time, *All.^o*. Copyright: 1927 MUSIC BUYERS CORP.

11 (Title) THE BILKMORE HOTEL Tender Heart (Baga) 2 Min.

Musical notation for item 11: Treble clef, 2/4 time, *All.^o*, *p*. Copyright: 1926 HAWKES & SON

12 (Title) WE DON'T ALLOW DOGS TO STOP HERE Repeat No. 4 (RED) 1½ Min.

Musical notation for item 12: Treble clef, 8/8 time, *All.^o scherz.*

13 (Action) HOTEL ELEVATOR GOES UP Witty Moments (Marquardt) 2¼ Min.

Musical notation for item 13: Treble clef, 2/4 time, *mod.^o*. Copyright: 1928 MUSIC BUYERS CORP.

14 (Title) THERE'S DIRTY WORK Repeat No. 4 (RED) 2½ Min.

Musical notation for item 14: Treble clef, 8/8 time, *All.^o scherz.*

15 (Action) DOG COMES FROM ELEVATOR Repeat No. 9 "Scherzo Silhouette" 1¼ Min.

Musical notation for item 15: Treble clef, 8/8 time, *All.^o*, *p*

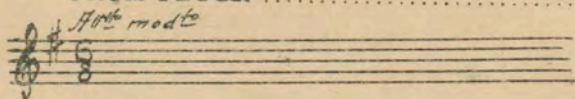
16 (Action) WIFE GETS OUT OF BED TO LET DOG IN BEDROOM Enchantment (Penn) 2¼ Min.

Musical notation for item 16: Treble clef, 8/8 time, *All.^o mod.*, *mp*. Copyright: 1928 EMIL ASCHER

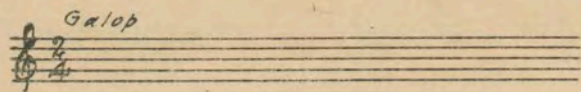
17 (Action) HUSBAND BEGINS TO PLAY WITH DOG The Swallows (Klein) ¾ Min.

Musical notation for item 17: Treble clef, 2/4 time, *Galop*, *mf*

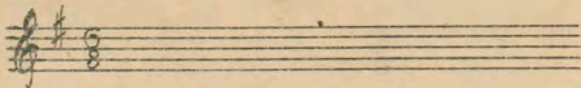
18 (Action) ACTION STOPS—HUSBAND GETS UP FROM FLOOR Repeat No. 16 "Enchantment" 1¼ Min.



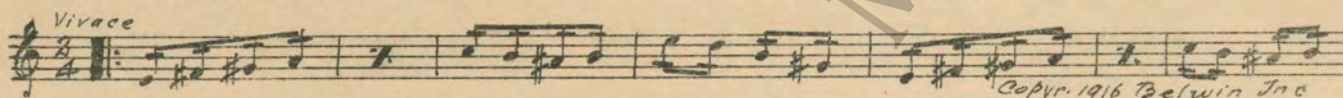
19 (Action) ACTION STARTS—DOG COMES TO BED Repeat No. 17 "Swallows" ¼ Min.



20 (Action) DOG LOCKED IN CLOSET Repeat No. 16 "Enchantment" 3 Min.



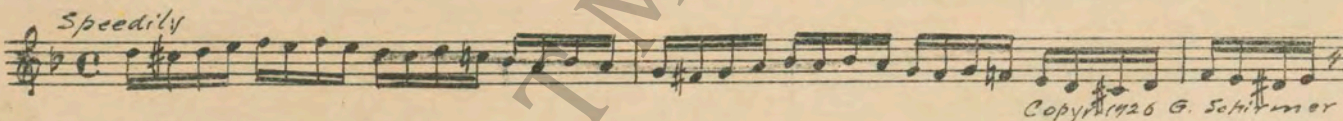
21 (Action) DOG ON FIRE-ESCAPE SEES WHITE CAT Hurry No. 33 (Minot) 2 Min.



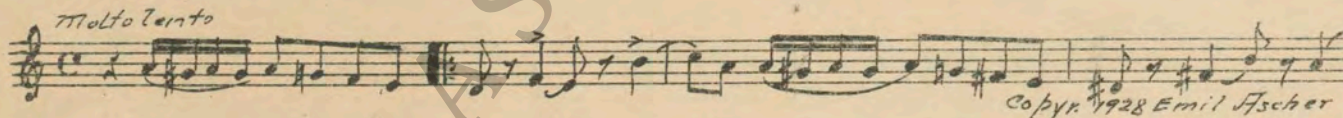
22 (Title) I'LL SUE YOU Ky-Isses (O'Hare) 2 Min.



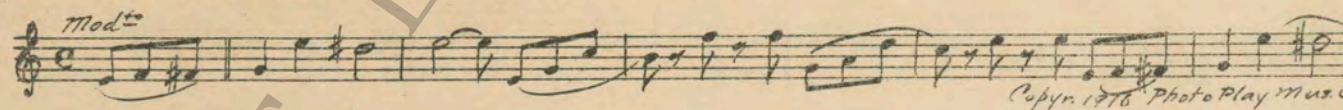
23 (Title) WE'RE GOING TO FINISH OUR HONEY-MOON IN JAIL Fugitive (Maiorana) (LT. BLUE) 2 Min.



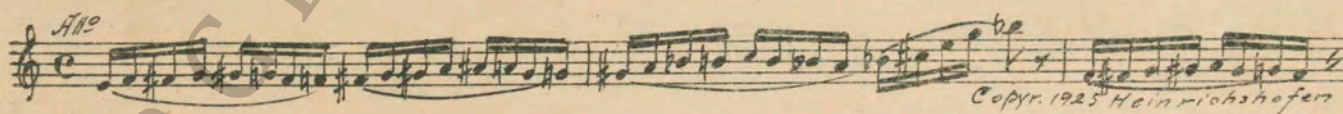
24 (Action) AUTO DRIVES OUT OF GARAGE Superstition (Varnier) 2¼ Min.



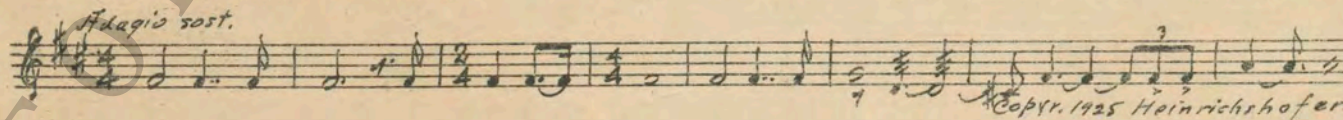
25 (Action) HUSBAND SEES DUMMY POLICEMAN Prudence (Luz) 1½ Min.



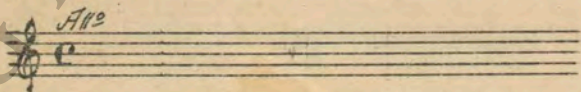
26 (Title) IT'S TOO DARK Storm-Rain (Stiller) 2¼ Min.



27 (Action) AUTO STOPS IN ROAD AND SINKS Prologue (Sommer) 1½ Min.



28 (Action) AUTO FALLS OVER CLIFF Repeat No. 26 "Storm-Rain" 2¼ Min.



29 (Action) LIP HUT Repeat No. 24 "Superstition" 2 Min.



30 (Action) **PLAY ONCE AND SEGUE** Enigma (Borch) 3/4 Min.

Mod^{to}

31 (Action) **HONEYMOONERS LEAVE HUT—
BOOTLEGGERS LAUGH** Fugitive (Maiorana) (LT. BLUE) 1/2 Min.

Speedily

32 (Title) **COME OUT OR WE'LL SHOOT** Hurry No. 87 (Berge) 2/4 Min.

All^o giusto

33 (Title) **WE'LL BLOW THEM** Repeat No. 31 (LT. BLUE) 1/4 Min.

Speedily

34 (Action) **STOP WITH EXPLOSION** The First Kiss (Robinson) 1 Min.

Valse

THE END

Proper orchestral rest period is Nos. 13 to 20 inclusive.
NOTE: The repetition of numbers in this cue sheet is simplified by the use of the "LUZ" SYMPHONIC COLOR GUIDE, sold by Music Buyers Corporation, 1520 Broadway, New York City. The color suggested for repetition of numbers designates the Mood or Emotion, and is used as a code for such repetitions.
Country of Origin, U. S. A.

Complete orchestrations and single piano parts of each separate number contained hereon, can be purchased from CAMEO MUSIC SERVICE CORPORATION, 315-317 WEST 47TH STREET, NEW YORK CITY.