

M. J. MINTZ (PATENT)
JULY 31, 1923.



METRO-GOLDWYN-MAYER
presents
THE LADY OF VICTORIES

A Technicolor Production

featuring

AGNES AYRES and OTTO MATTIESEN

Compiled by Ernst Luz

A METRO-GOLDWYN-MAYER PICTURE

Length of film 2 reels (1585 feet)

Maximum projection time, 18 minutes

- 1 AT SCREENING In Summer Fields (Brahms) ¾ Min.

Lento

Copyr. 1916 G. Schirmer

- 2 (Title) THE ISLAND OF MARTINIQUE Faithfulness (Brahms) 1 Min.

Lento

Copyr. 1916 G. Schirmer

- 3 (Title) JOSEPHINE Gavotte Celebre (Martini) 1¼ Min.

To di Gavotte

Copyr. 1921 Oliver Ditson

- 4 (Action) GARDEN SCENE Love Thoughts (Friml) (WHITE) 2¼ Min.

Moderato

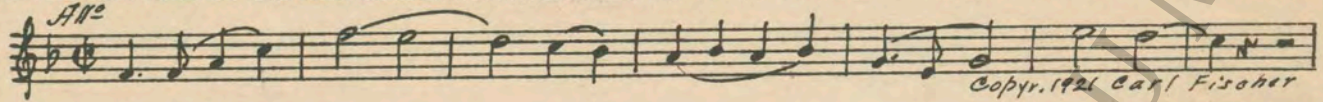
Copyr. 1927 Emil Ascher

- 5 (Title) THE SWORD Pathetique (Noyes) 1½ Min.

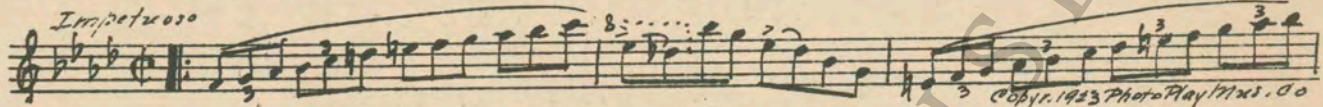
Andte

Copyr. 1925 Hawkes & Son

- 6 (Title) THE CATHEDRAL OF NOTRE DAME Sanctus from Verdi's Requiem (Roberts) 1 Min.



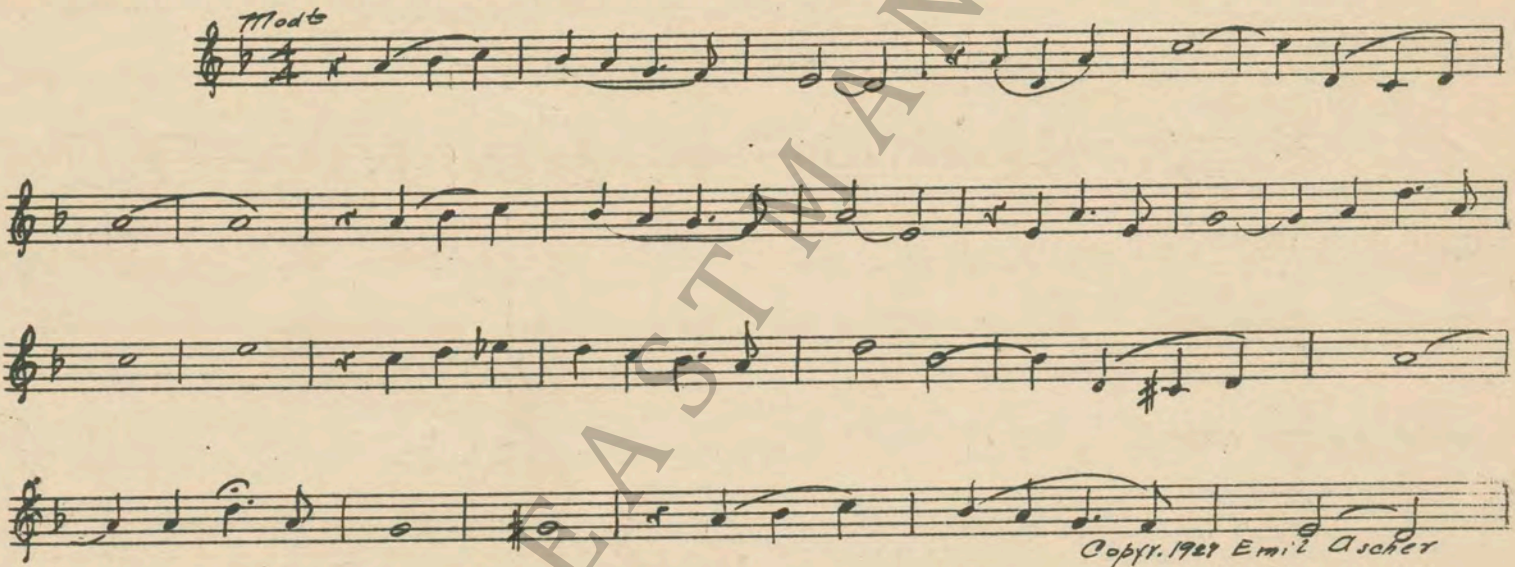
- 7 (Title) EVEN AS EMPEROR Drum Roll to Screen by Drummer 1/4 Min.
 8 (Action) DRUMMER ON SCREEN Robespierre Overture (Litolff) 1/2 Min.



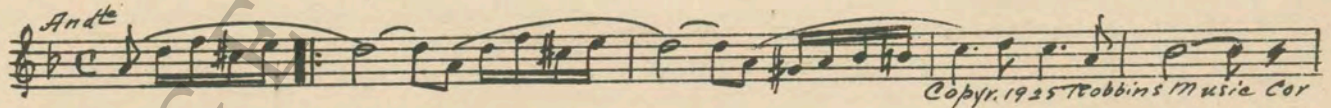
- 9 (Action) NAPOLEON WOUNDED PUT INTO CARRIAGE Elegie and Appassionato (Savino) 2 1/4 Min.



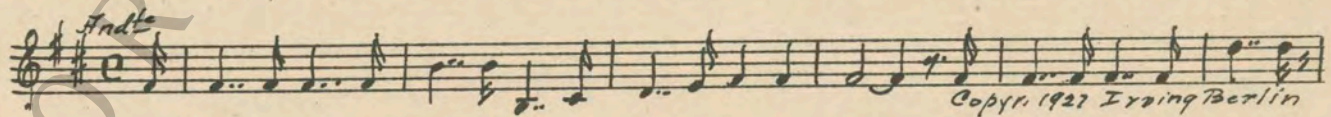
- 10 (Title) I WILL INFORM HER MYSELF Love Thoughts (Friml) (WHITE) 2 1/4 Min.



- 11 (Action) NAPOLEON AT MIRROR KISSES JOSEPHINE Recitative and Soliloquy (Savino) 2 1/4 Min.



- 12 (Title) DARK DAYS FOR THE ARMIES OF FRANCE. Footsteps on Tympany by Drummer 1/2 Min.
 13 (Action) SNOW UNDER FEET SEEN Dramatic Andante (Kempinski) 1 Min.



THE END

NOTE: The repetition of numbers in this cue sheet is simplified by the use of the "LUZ" SYMPHONIC COLOR GUIDE, sold by Music Buyers Corporation, 1520 Broadway, New York City. The color suggested for repetition of numbers designates the Mood or Emotion, and is used as a code for such repetitions.
 Country of Origin, U. S. A.

Complete orchestrations and single piano parts of each separate number contained hereon, can be purchased from CAMEO MUSIC SERVICE CORPORATION, 315-317 WEST 47TH STREET, NEW YORK CITY.