

Thematic Music

Cue Sheet

M. J. MINTZ (PATENT)
JULY 31, 1923.



LON CHANEY in LONDON AFTER MIDNIGHT

with
MARCELINE DAY and CONRAD NAGEL

A TOD BROWNING PRODUCTION

Screen Play by Waldemar Young

Written and Directed by Tod Browning

Compiled by Ernst Luz

A METRO-GOLDWYN-MAYER PICTURE

Length of film 7 reels (5670 feet)

Maximum projection time 1 hour, 10 minutes

1 AT SCREENINGSymphonic Color Classic No. 5 (Marquardt) (RED).....1 Min.

Lento

Copyright 1925 Music Buyers Corp.

2 (Title) A CLOUD SWEEP SKYReflection (Friml)4 Min.

*And^{te} cantabile
rva* *loco*

Copyright 1926 Emil Fischer Inc.

3 (Title) BUT BALFOUR'S DEATH REMAINED A MYSTERYThe Hobbling Hobo (Berge) (BROWN)1 1/2 Min.

Mod^o *loco*

8^{va} basso Copyright 1926 Robbins Music Corp.

4 (Action) WAGON STOPS—LANTERN SHOWS IN HOUSERepeat No. 1 (RED)1 Min.

Lento

5 (Action) OLD MAN AND WOMAN COME FROM HOUSERepeat No. 3 (BROWN)1 1/2 Min.

Mod^o

6 (Title) AS SOON AS YOU ARE READYRepeat No. 1 (RED)1 Min.

Lento

7 (Title) IN SPITE OF THE HAUNTED NEIGHBORHOODHumorous Escapade (Delille)1 1/4 Min.

*All^o con brio.
pizz* *arco*

Copyright 1927 Irving Berlin

8 (Action) CARD ON SCREEN—EDWARD C. BURKE.....Nightfall (Kempinski)1½ Min.

Musical notation for item 8, featuring a treble clef, a key signature of one sharp (F#), and a tempo marking of *Mod^{to}*. The notation includes a series of eighth and quarter notes. A copyright notice at the bottom right reads "copyr 1919 Photo Play music co".

9 (Title) SIR JAMES, HOW DID THEY EVER.....April Sighs (Ring-Hager)3 Min.

Musical notation for item 9, featuring a treble clef, a key signature of one sharp (F#), and a tempo marking of *Mod^{to} con moto*. The notation includes a series of eighth and quarter notes. A copyright notice at the bottom right reads "copyr 1920 Forster Music co".

10 (Action) GIRL WALKS OFF SCREEN—MAN SITS DOWNSymphonic Color Classic No. 5 (Marquardt) (RED)½ Min.

Musical notation for item 10, featuring a treble clef, a key signature of two flats (Bb, Eb), and a tempo marking of *Lento*. The notation includes a series of eighth and quarter notes. A copyright notice at the bottom right reads "copyr 1925 Music Buyers corp".

11 (Action) FADE-OUTThe Hobbling Hobo (Berge) (BROWN)1 Min.

Musical notation for item 11, featuring a treble clef, a key signature of two flats (Bb, Eb), and a tempo marking of *Mod^{to}*. The notation includes a series of eighth and quarter notes. A copyright notice at the bottom right reads "copyr 1926 Robbins Music corp".

12 (Title) THE UNDEADFarewell (Matt)1½ Min.

Musical notation for item 12, featuring a treble clef, a key signature of two flats (Bb, Eb), and a tempo marking of *And^{te}*. The notation includes a series of eighth and quarter notes. A copyright notice at the bottom right reads "copyr 1918 J. R. La Fleur & son".

13 (Title) THIS IS ALLSymphonic Color Classic No. 5 (Marquardt) (DARK BLUE) ¾ Min.

Musical notation for item 13, featuring a treble clef, a key signature of two flats (Bb, Eb), and a tempo marking of *All^o*. The notation includes a series of eighth and quarter notes. A copyright notice at the bottom right reads "copyr 1925 Music Buyers corp".

14 (Title) OH SIR! IT WAS HORRIBLEContinue No. 13¾ Min

15 (Action) EXPLOSIONRepeat No. 10 (RED)¾ Min.

Musical notation for item 15, featuring a treble clef, a key signature of two flats (Bb, Eb), and a tempo marking of *Lento*. The notation is mostly blank with a few notes.

16 (Title) AND THEN SIR, I SCREAMEDRepeat No. 13 (DARK BLUE)¾ Min.

Musical notation for item 16, featuring a treble clef, a key signature of two flats (Bb, Eb), and a tempo marking of *All^o*. The notation is mostly blank with a few notes.

17 (Action) PEOPLE RUN TO WINDOWRepeat No. 10 (RED)¾ Min.

Musical notation for item 17, featuring a treble clef, a key signature of two flats (Bb, Eb), and a tempo marking of *Lento*. The notation is mostly blank with a few notes.

18 (Action) PEOPLE LEAVE WINDOWAlone At Night (Marquardt)1 Min.

Musical notation for item 18, featuring a treble clef, a key signature of one sharp (F#), and a tempo marking of *And^{te}*. The notation includes a series of eighth and quarter notes. A copyright notice at the bottom right reads "copyr 1925 Music Buyers corp".

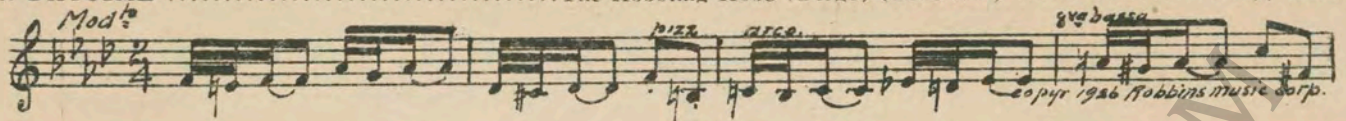
19 (Title) YOU SEE DEARSymphonic Color Classic No. 5 (Marquardt) (WHITE).....1 Min.

Musical notation for item 19, featuring a treble clef, a key signature of two flats (Bb, Eb), and a tempo marking of *And^{te}*. The notation includes a series of eighth and quarter notes. A copyright notice at the bottom right reads "copyr 1925 Music Buyers corp".

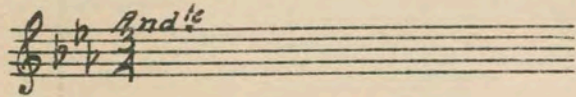
Musical notation for item 19, featuring a treble clef, a key signature of two flats (Bb, Eb), and a tempo marking of *And^{te}*. The notation includes a series of eighth and quarter notes. A copyright notice at the bottom right reads "copyr 1925 Music Buyers corp".

Musical notation for item 19, featuring a treble clef, a key signature of two flats (Bb, Eb), and a tempo marking of *And^{te}*. The notation includes a series of eighth and quarter notes. A copyright notice at the bottom right reads "copyr 1925 Music Buyers corp".

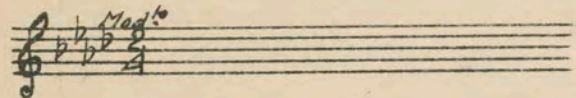
20 (Title) IN DAYTIME The Hobbling Hobo (Berge) (BROWN) 1¼ Min.



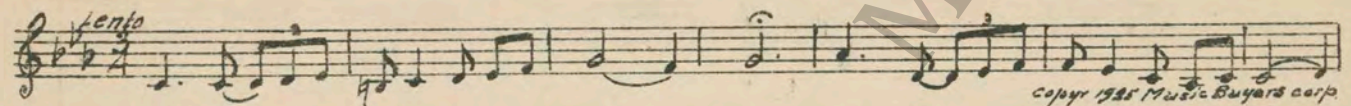
21 (Action) FADE-OUT OF HAUNTED HOUSE CELLAR... Repeat No. 19 (WHITE) 2¾ Min.



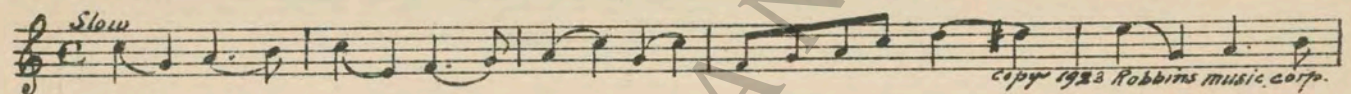
22 (Title) THAT NIGHT STRANGE LIGHTS Repeat No. 20 (BROWN) 1 Min.



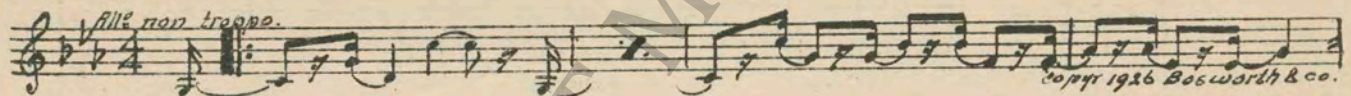
23 (Action) TWO MEN CRAWL UP LADDER Symphonic Color Classic No. 5 (Marquardt) (RED) ¾ Min.



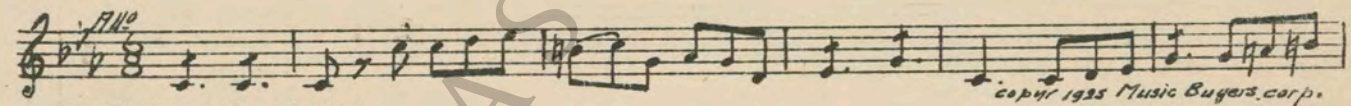
24 (Action) TWO MEN COME DOWN FROM LADDER AND WALK OFF SCREEN Hedge Roses (Frey) 3½ Min.



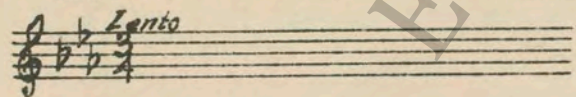
25 (Title) WATCH MY EYE AND THINK HARD A Mysterious Episode (Engleman) (BLACK) 1¼ Min.



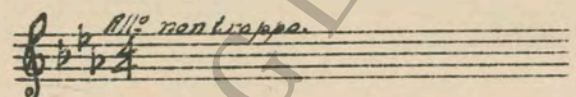
26 (Action) MAN IN BED AWAKES Symphonic Color Classic No. 5 (Marquardt) (DARK BLUE) .. 1 Min



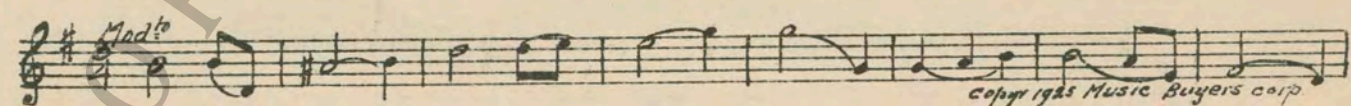
27 (Action) WOMAN IN NIGHT CLOTHES SHOWS ON SCREEN Repeat No. 23 (RED) 1¼ Min.



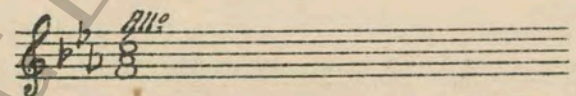
28 (Action) LON CHANEY LIGHTS LIGHT IN ROOM.... Repeat No. 25 (BLACK) 1¼ Min.



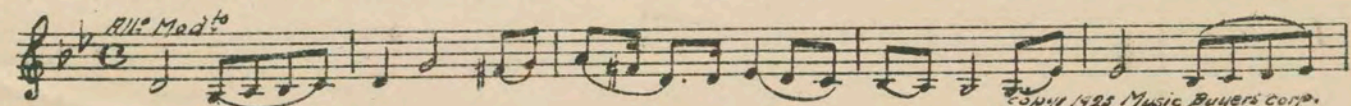
29 (Action) BOY DROPS HEAD IN SLEEP Symphonic Color Classic No. 5 (Marquardt) (DARK GREEN) .. 1¼ Min.



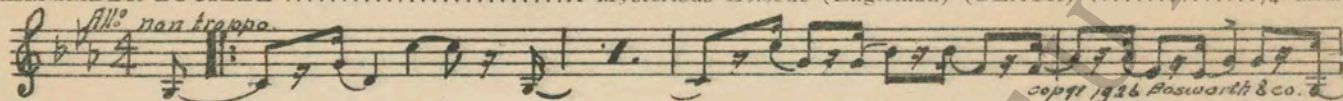
30 (Action) BOY KNOCKS ON GIRL'S DOOR Repeat No. 26 (DARK BLUE) ½ Min.



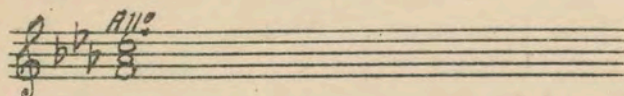
31 (Action) MEN ENTER GIRL'S ROOM The Lure of Crimson (Marquardt) 1¾ Min.



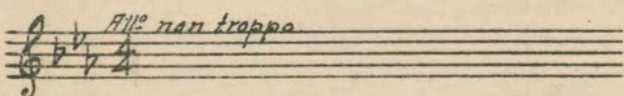
32 (Title) REMEMBER LUCILLE A Mysterious Eviscde (Engleman) (BLACK) 1¼ Min.



33 (Action) LOVER WITH AXE SHOWS ON SCREEN..... Repeat No. 26 (DARK BLUE) 1 Min.



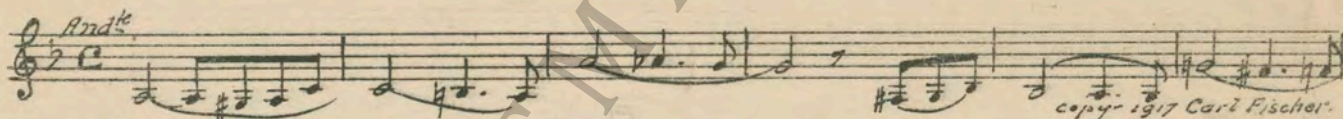
34 (Title) WE ARE GOING TO FINISH THIS TONIGHT. Repeat No. 32 (BLACK) 2½ Min.



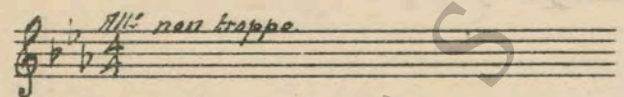
35 (Title) FIVE YEARS AGO Symphonic Color Classic No. 5 (Marquardt) (YELLOW) 1 Min.



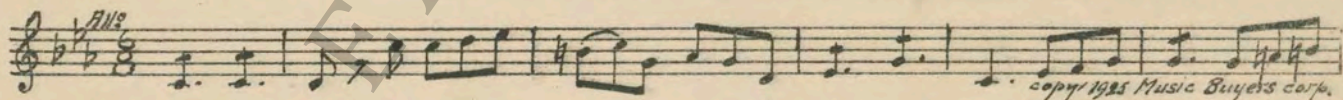
36 (Title) JAMES, I HAVE SIGNED MY WILL..... Prelude from "Kunihild" (Kistler) 1¾ Min.



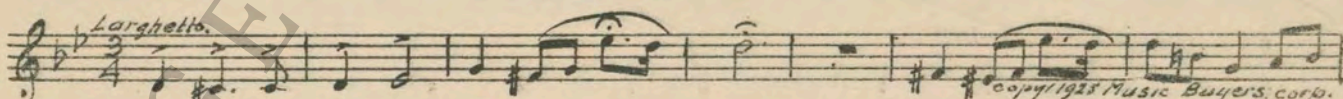
37 (Title) THAT ELIMINATES HIM Repeat No. 32 (BLACK) 1¼ Min.



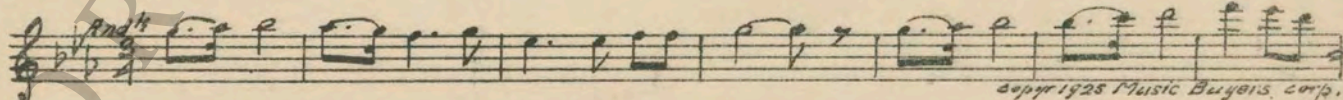
38 (Action) SHOT Symphonic Color Classic No. 5 (Marquardt) (DARK BLUE) ½ Min.



39 (Title) SIR JAMES BROUGHT OUT OF INFLUENCE. Romance of Autumn (Marquardt) 1½ Min.



40 (Action) SIR JAMES HANDCUFFED Symphonic Color Classic No. 5 (Marquardt) 1¾ Min.



THE END

Proper rest period is Nos. 20 to 29 inclusive.

NOTE: The repetition of numbers in this cue sheet is simplified by the use of the "LUZ" SYMPHONIC COLOR GUIDE, sold by Music Buyers Corporation, 1520 Broadway, New York City. The color suggested for repetition of numbers designates the Mood or Emotion, and is used as a code for such repetition.

Country of Origin, U. S. A.

Complete orchestrations and single piano parts of each separate number contained hereon, can be purchased from CAMEO MUSIC SERVICE CORPORATION, 315-317 WEST 47TH STREET, NEW YORK CITY.