

M.J. MINTZ (PATENT)
JULY 31, 1923.

Samuel Goldwyn
presents
the HENRY KING production
"THE WINNING OF BARBARA WORTH"

Adapted by Frances Marion
from the famous novel by
Harold Bell Wright

with
RONALD COLMAN and VILMA BANKY

Music compiled by Ted Henkel
Released by

UNITED ARTISTS CORPORATION

AT SCREENING

"A SONG OF THE DESERT" M. I. Praul Copyr. M. I. Praul 1926

Musical notation for "A SONG OF THE DESERT" featuring Horns and Flute.

"SOLITUDE" Ted. Henkel Copyr. T. Henkel 1926

Musical notation for "SOLITUDE" featuring English Horn and other instruments.

"SONG OF THE DESERT"

Musical notation for the second instance of "SONG OF THE DESERT".

SUNK INTO THE EARTH

Musical notation for "SUNK INTO THE EARTH" featuring Oboe and English Horn.

A TAWNY SIREN

Musical notation for "A TAWNY SIREN" featuring Bass and Horns.

THE END OF THE RAINBOW

"DESOLATION" G.E. Conterno Copyr. G & J. LIPSKIN

Musical notation for "THE END OF THE RAINBOW" and "DESOLATION".

BANKY PLACES CROSS ON GRAVE

Musical notation for "BANKY PLACES CROSS ON GRAVE" featuring Viola Solo.

AT THE LAST WATER HOLE

Musical notation for "AT THE LAST WATER HOLE" featuring strings and woodwinds.

I KNOW IT TEX

SEER ON CREST

"SOLITUDE"

Musical notation for "I KNOW IT TEX", "SEER ON CREST", and "SOLITUDE".

"PERHAPS WE WILL" S. TEX. & PAT. PIZZ. 1 arco

"ON THE FARM" E. F. Goldman Copyr. C. FISCHER 1926 Play all of first strain and repeat, then 2nd strain 30 BARS

YOU LITTLE SAND FLEA very fast

"JOYEUSE ALERTE" - V. POSSE Copyr. J. YVES. continue ten more bars - then

TEX SEES SNAKE ff VIVO SHOT Tr. mean effect PAT FALLS SLIDE pizz strid

BOY RUNS TO SEER splash Tr. mean S. BARS

BANKY LEAVES GRAVE WORTH OUTFIT LEAVE "SOLITUDE" rit cello solo pp strgs. pizz B's's'n solo. strgs Harmony pizz

BANKY LEAVES orch.

"FLIGHT OF THE BUMBLE BEE" Rimsky-Korsakov Copyr. C. FISCHER 1926 SAND STORM continued 40 more bars

"WIND STORM" Ted. Henkel Copyr. T. Henkel PLAY ONCE THROUGH

MERCILESS SCOURGING "SOLITUDE" Flute strgs pizz cont'd once through Second close up of Child RECITATIF DRAMATIQUE #7 BARON COPYR. M. BARON

cont'd 48 more bars

ETERNAL HEAT DEDICATION AND BENEDICTION Meyerbeer Copyr. C. FISCHER 1920

BEYOND BAKED FRONTIER

Musical staff with treble clef, key signature of one sharp (F#), and 4/4 time signature. The melody consists of eighth and sixteenth notes.

RONDE DE BACHI - BOUZOUCKS Gabriel-Marie Copyr. D. RAHTER Leipzig

Musical staff with treble clef, key signature of one sharp (F#), and 4/4 time signature. The melody features eighth notes and trills.

Musical staff with treble clef, key signature of one sharp (F#), and 4/4 time signature. The melody includes trills and a final measure with the instruction "cont'd 13 more bars".

After letter - BANKY - PARROT "ROMANZA" E. Granados Copyr. G. Schirmer 1924

Musical staff with treble clef, key signature of one sharp (F#), and 3/4 time signature. The melody is marked with a piano (*p*) dynamic.

BANKY KISSES WORTH

Musical staff with treble clef, key signature of one sharp (F#), and 4/4 time signature. The melody is marked with a lively tempo and includes a fermata.

"MME TOUJOURS - PRET" C.B. Hampson - Copyr. HAWKES & SON

Musical staff with treble clef, key signature of one sharp (F#), and 4/4 time signature. The melody consists of eighth and sixteenth notes.

TEX - PAT FALL

VIVE LA DANSE N°1. H. FÉLICKÉ Copyr. HAWKES & SON 1926

Musical staff with treble clef, key signature of one sharp (F#), and 2/4 time signature. The melody includes a slide effect and a piano (*p*) dynamic.

S. ABE SEES BARBARA "ROMANZA" Granados

Musical staff with treble clef, key signature of one sharp (F#), and 3/4 time signature. The melody is marked with a piano (*p*) dynamic and includes the instruction "cont'd 36 more bars".

MY SON

PREMIER RÊVE H. Mouzon Copyr. J. YVES 1924

Musical staff with treble clef, key signature of one sharp (F#), and 4/4 time signature. The melody features a fermata and a change in key signature.

S. BARBA RIDES UP

Musical staff with treble clef, key signature of one sharp (F#), and 2/4 time signature. The melody includes a fermata and a change in key signature.

HORSE BUCKS

Musical staff with treble clef, key signature of one sharp (F#), and 4/4 time signature. The melody is marked with a fortissimo (*ff*) dynamic.

BARBARA FALLS "EMOTIONAL OFF HORSE" "AGITATO"

Musical staff with treble clef, key signature of one sharp (F#), and 6/8 time signature. The melody is marked with a fortissimo (*ff*) dynamic and includes a fermata.

Savino - COPYR. ROBBINS-ENGEL 1925

Poco Meno

Musical staff with treble clef, key signature of one sharp (F#), and 12/8 time signature. The melody is marked with a rallentando (*rall*) and a poco meno tempo.

4
BARBA 2^d CLOSE-UP "ROMANZA" Granados

"CHIFFONS & LACES" Baron copyr. Belwin 1926
Play to end of strain and repeat — 26 bars —

S. BARBA RIDES AWAY "TENDER HEART" Con Baga copyr. HAWKES & SON cont'd — 9 bars —

A FESTIVAL "LA SANDUNGA" del Moral copyr.
rit. mandolin-guitar-violin

direct cue-stop

All? Grazioso "BY MOONLIGHT" de Koven copyr. G. Schirmer.
orch. viol. fl. cont' 16 bars

boco sosten. cont'd — 16 — bars

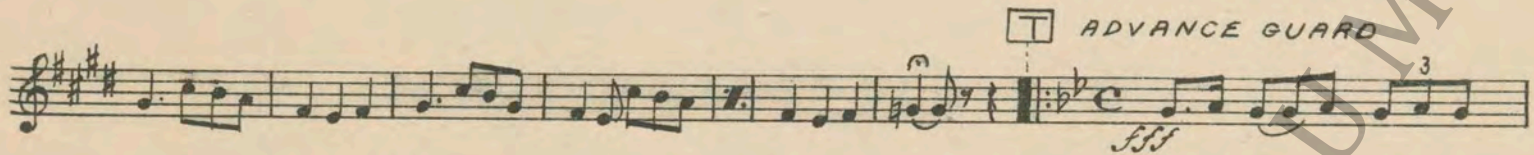
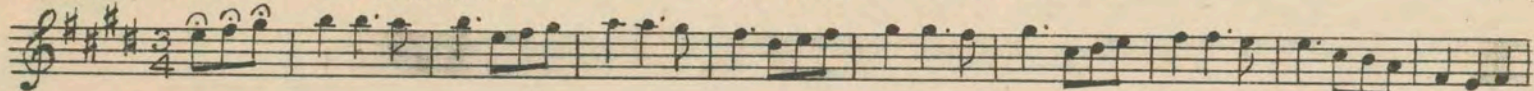
DIRECT CUE "A TENDER ET VUCTO"
mandolin-guitar-violin

REPEAT TILL COLMAN SEES MEXICANS AT GATE
play to end of strain & segue

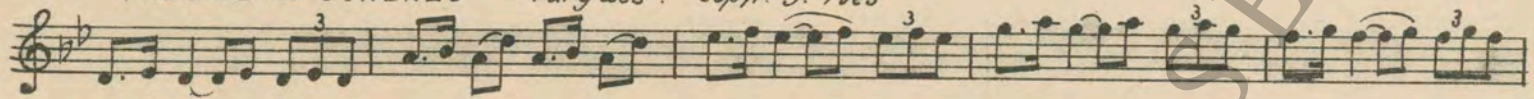
"SPIRIT OF SPRING" A. Reiser copyr. 1926 Geo. H. Sanders

After title BUT YOU DON'T STOP AT ABE
cont' — 12 — bars

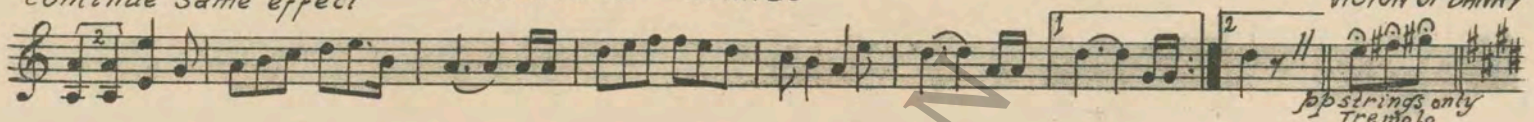
boco lento
pp cont' 20 bars



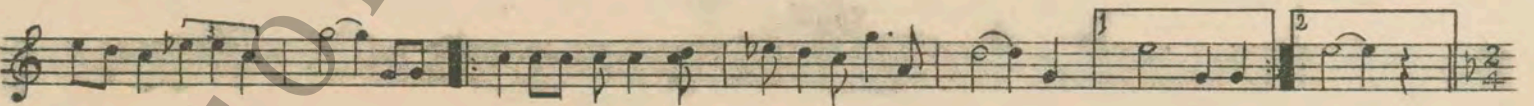
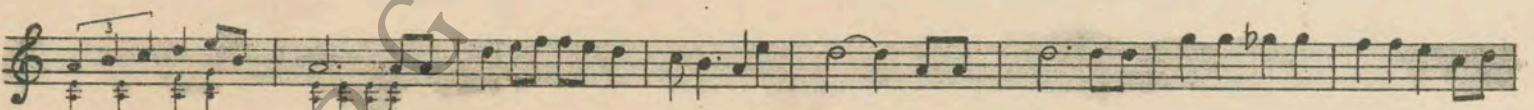
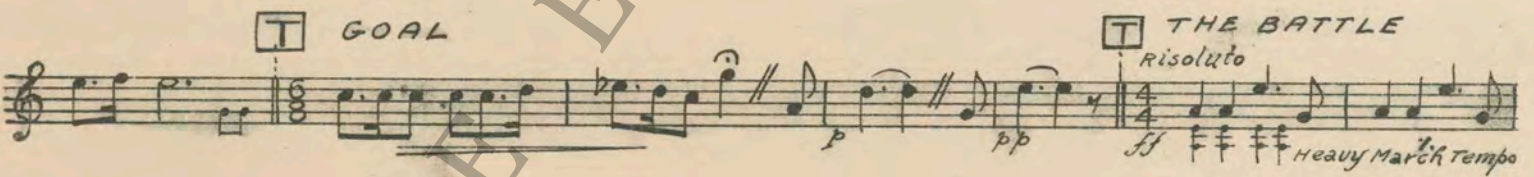
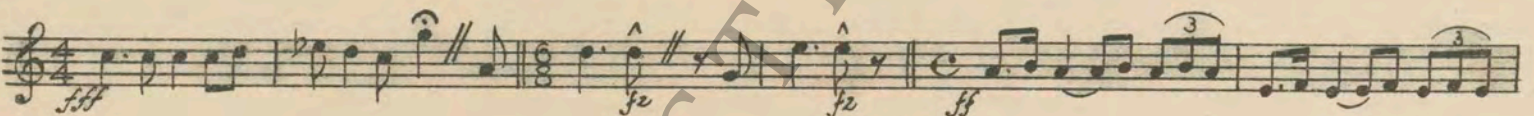
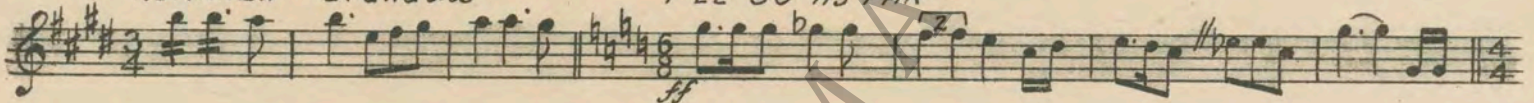
"PRELUDE & SCHERZO" Vargues. Copyr. J. Yves



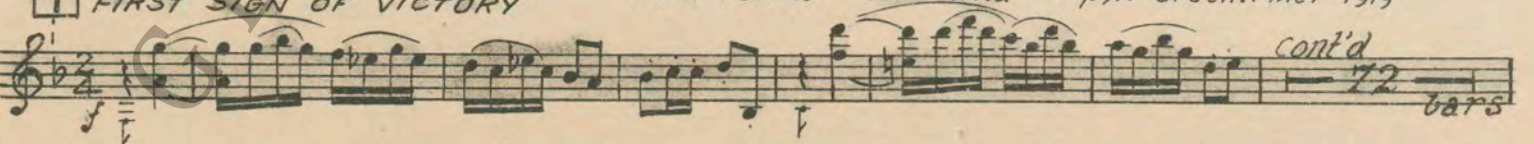
continue same effect "SOLITUDE" HENKEL



"ROMANZA" Granados I'LL GO AS FAR



FIRST SIGN OF VICTORY "ALLA POLKA" Smetana Copyr. G. Schirmer 1919



"MEETING OF THE CAMORRISTS" E. Wolf - Ferrari Copyr. G. Schirmer 1912



S. Colman & Banky "ROMANZA" "ROMANCE SANS PAROLES" H. Davidoff Copyr. G. Schirmer
Continue till fade to Greenfield

cont' till title VIOLIN - GUITAR - MOUTH HARP
JEFF WORTH'S PLEDGE Fast

cont'd till wagon close up - Seq. Pop. Melody
"MY TRENCH IS VILLAGE QUEEN"

S. CROWD FOLLOWS BANKY "AMERICAN FESTIVAL MARCH" Riesenfeld Copyr. J. W. Stern.
cont. till title PAY DAY

"DISPERAZIONE" BECCA - Copyr. Schlesinger
cont. till title WHILE AT SAN FELIPE

"ROSES HONEYMOON" Bratton Copyr. M. WITMARK & SONS
continued till fade to crowd

"MYSTIC ROMANCE" B. Sprawley Copyr. Geo. H. Sanders. "ROMANZA"
cont. till Banky at Phone

WORTH TO PHONE "SILVIO PELLICO" Becca Copyr. F. D. Marchette
cont. till Greenfield's Office "SINISTER AGITATO" by Becca - Copyr. Schlesinger

"FINGAL'S CAVE" Mendelssohn-Bartholdy Copyr. C. Fischer
cont. till fade to Horses on Desert

"UNDINE OVERTURE" Lortzing Copyr. G. FISCHER
cont. till nightfall at Barba

"IMPROVISO" Fosse. Copyr. J. Yves.
Continued till Banky opens door cont. till ABE IS DEAD

DRAM. AGITATO #7 Hough - Copyr. Cinema Music Co. "LONGING" - Wood. Copyr. HAWKES & SON
cont. till the "MORNING"

"PRELUDE IN G MINOR" Rachmaninoff Copyr. G. Schirmer
cont. till Greenfield drives up

continue till title *"ROMANZA"* *continue till man up on horse*
 SO YOU ARE IN LOVE

"SIXTH SYMPHONY" Beethoven THUNDER STORM copyr. C. FISCHER "AGITATO #5" Axt. Copyr. Robbins-Engel
 segue segue

MILITARY HURRY #1 Levy copyr. Cinema Music Co LYNCH LAW - Becca copyr. Schlesinger
 segue segue

"BATTLE & DISTURBANCE" Becca. copyr. Schlesinger "INFERNO" H. Hand. Copyr. Edw. MARKS
 segue segue

"PROLOGUE" Kilenyi. copyr. C. Fischer
 cont. till fade out cont. till Tex & Greenfield

SUITE ANCIENNE #IV Hadley copyr. C. Fischer TEX THROWS MUD SUITE ANCIENNE # III
 cont 16 bars

Risoluto "SOLITUDE" march tempo
 cont. till Colman & Men

"ROMANZA" © PLAY to END of N.º
 once thru' - 10 - bars 46 bars

T AND HOLMES WON Joyful

"ROMANZA"

THE END

Country of Origin, U. S. A.

Complete orchestrations and single piano parts of each separate number contained hereon, can be purchased from CAMEO MUSIC SERVICE CORPORATION, 315-317 WEST 9TH STREET, NEW YORK CITY.

201010294 0179