



M. J. MINTZ (PATENT)  
JULY 31, 1923.

WILLIAM FOX FILM PRODUCTION  
EDMUND LOWE  
in  
"THE WIZARD"

Compiled by Michael P. Krueger  
The timing is based on speed of 12 minutes per reel

- 1 AT SCREENING ..... Marche Mysterieuse (Schad) ..... 1¼ Min.

*Marcia*

Copyright 1925 Feature Music P.C.

- 2 (Title) THE PRESS—LIVING ..... En Visite (McDonald) ..... 1¼ Min.

*All<sup>o</sup>*

Copyright 1927 Cinemusic Service

- 3 (Action) NEWSPAPER INSERT ..... The Enchanted Castle (Marquardt) ..... ¾ Min.

*All<sup>o</sup> mod<sup>to</sup>*

Copyright 1926 Music Buyers Corp.

- 4 (Action) CHANGE OF SCENE TO STREET ..... Rush Hours (Sanders) ..... ½ Min.

*Vivo*

Copyright 1926 Geo. H. Sanders Co.

- 5 (Action) MAN KNOCKED DOWN BY AUTOMOBILE... THEME: Valse Dramatique (Rapee) ..... 1 Min.

*Valse*

Copyright 1925 Belwin Inc.

- 6 (Title) AMBULANCE ON THE WAY, MISS WEBSTER ..... Ecstatic Allegro (Sibelius) ..... ¾ Min.

*All<sup>o</sup>*

Copyright 1925 Schlesinger

- 7 (Action) CHANGE OF SCENE TO MAN IN LABORATORY ..... Misterioso Infernale (Borch) ..... 1¼ Min.

*All<sup>o</sup> con moto*

Copyright G. Schirmer

- 8 (Title) THE WEBSTER HOME ..... The Varsity Drag (Henderson) ..... 1¾ Min.

*Mod<sup>to</sup>*

Copyright 1927 De Sylva, Brown & Henderson

- 9 (Action) WIZARD ENTERS ..... Repeat No. 1 "Marche Mysterieuse" ..... 1½ Min.

*Marcia*

10 (Action) MAN BACKS INTO ROOM ..... Fleeting Shadows (Weiss) ..... 1¼ Min.

*Mysterioso a La Valse*

Copyr. 1925 G. H. Sanders Co

11 (Action) CHANGE OF SCENE TO BANQUET TABLE... Repeat No. 8 "Varsity Drag" ..... 1¼ Min.

*Modto*

12 (Action) CHANGE OF SCENE—CLOSE-UP OF HOUSE-  
TOP AND CHIMNEY ..... Gruesome Tales No. 1 (Rapee-Axt) ..... ½ Min.

*Largo mist.*

Copyr. Robbins Music Corp.

13 (Action) CANDLE LIGHTS ON BIRTHDAY CAKE  
BLOW OUT ..... Gruesome Tales No. 2 (Rapee-Axt) (Start "FF") ..... 1¼ Min.

*Maestoso*

Copyr. 1923 Robbins Music Corp.

14 (Title) WHERE IS EDWARD PAIMER ..... Gruesome Misterioso (Borch) ..... ¾ Min.

*Allo*

Copyr. 1919 Belwin Inc

15 (Action) CLOSE-UP OF DETECTIVE OFFICE DOOR... Phantom Visions (Stevenson) ..... 1½ Min.

*Allo modto*

Copyr. 1920 Belwin Inc.

16 (Action) EDMUND LOWE ENTERS DETECTIVE'S  
OFFICE ..... A Gay Lothario (Bierman) ..... 1 Min.

*Modto con grazioso*

Copyr. 1927 American Composers

17 (Action) CHANGE OF SCENE TO WEBSTER HOME... Misterioso No. 28 (Lake) ..... 1¼ Min.

*Mysterioso*

Copyr. 1916 Carl Fischer

18 (Action) CHANGE OF SCENE TO LOWE AND  
DETECTIVE ..... Intermezzo Giocoso (Egenger) ..... 2 Min.

*Scherzando*

Irving Berlin

19 (Action) CHANGE OF SCENE TO WIZARD'S HOME... Repeat No. 7 "Misterioso Infernale" ..... 2 Min.

*Allo con moto*

20 (Action) CHANGE OF SCENE TO COLORED MEN  
IN PANTRY ..... March of the Dwarfs (Grieg) ..... 1¾ Min

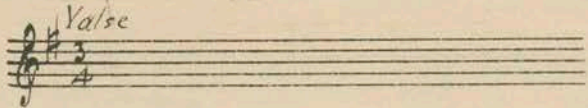
*Allo modto*

Copyr. 1910 G. Schirmer

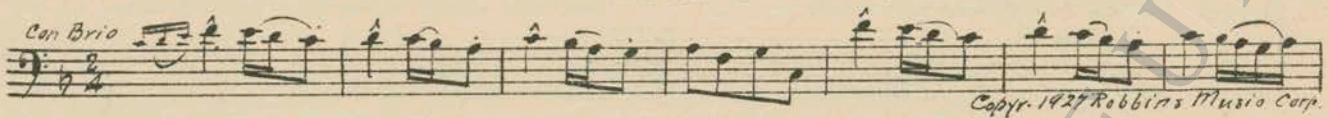
21 (Action) EDMUND LOWE ENTERS DOCTOR'S HOUSE. Repeat No. 10 "Fleeting Shadows" ..... 1 Min.

*Mysterioso a La Valse*

22 (Action) LOWE WALKS OVER TO ANN ..... Repeat Theme No. 5 ..... 1½ Min.



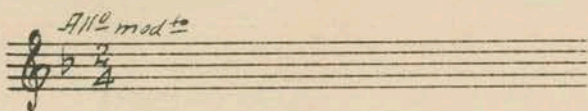
23 (Action) DETECTIVE SEEN RUNNING ..... The Jesters (Carbonara) ..... ¼ Min.



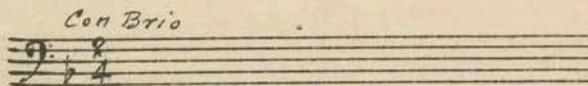
24 (Title) JUST RECOUNT ..... THEME: Valse Dramatique (Rapee) (From Verse) ..... 2¾ Min.



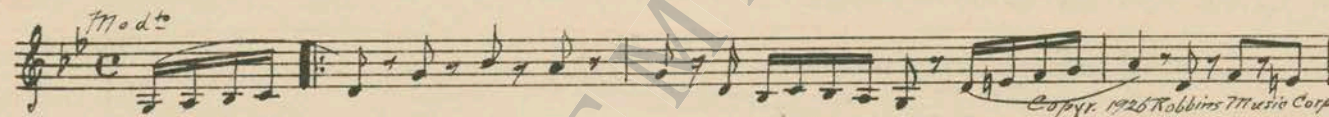
25 (Action) DETECTIVE APPROACHES TWO COLORED MEN ..... Repeat No. 20 "March of the Dwarfs" ..... 2 Min.



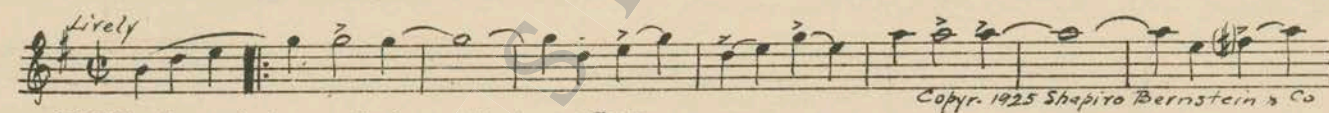
26 (Title) GET OUT BEFORE ..... Repeat No. 23 "The Jesters" ..... 1 Min.



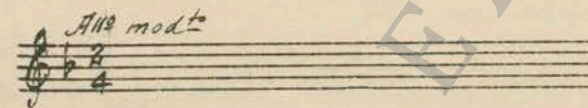
27 (Action) REPORTER LEAVES HOUSE ..... Comic Misterioso (Berge) ..... ¾ Min.



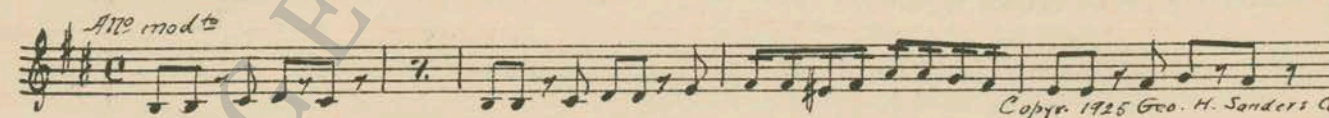
28 (Action) TWO COLORED MEN SEEN AGAIN ..... Alabamy Bound (Green) ..... ¼ Min.



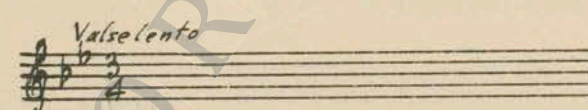
29 (Action) COLORED MEN SLIDE INTO DOCTOR'S HOUSE ..... NOTE: Play refrain very lively; catch storm effects. Repeat No. 20 "March of the Dwarfs" ..... 1½ Min.



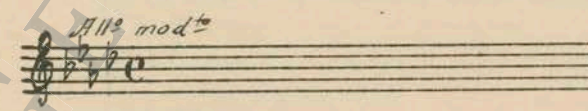
30 (Action) COLORED MEN SEE ORIENTAL SERVANT WALK DOWNSTAIRS ..... Omens (Schad) ..... 2½ Min.



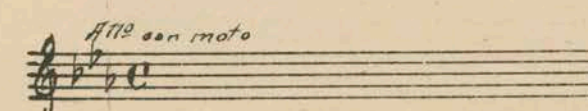
31 (Action) WIZARD LEAVES JUDGE'S ROOM ..... Repeat Theme No. 24 ..... 1¼ Min.



32 (Action) CHANGE OF SCENE TO DR. CORIOLIS RUNNING THROUGH HIS LABORATORY ..... Repeat No. 15 "Phantom Visions" (Play "PP") ..... 2¼ Min.



33 (Action) DOCTOR SEEN AGAIN IN LABORATORY ..... Repeat No. 7 "Misterioso Infernale" ..... 3¼ Min.



34 (Action) CHANGE OF SCENE TO LOWE ..... Ghost Dance (Salisbury) ..... 5 Min.

*Mod<sup>to</sup>*

*Copyr. 1911 Will Rossiter*

35 (Action) AFTER APE PICKS UP VASE ..... NOTE: Start very "PP"—then to action. Entr'acte from "Atonement of Pan" (Hadley) ..... 1 3/4 Min.

*Mod<sup>to</sup>*

*Copyr. 1916 G. Schirmer*

36 (Action) LOWE SEES PICTURE OF APE IN BOOK..... Repeat No. 7 "Misterioso Infernale" ..... 5 3/4 Min.

*All<sup>o</sup> con moto*

37 (Action) LOWE OPENS DOOR AND DEAD MAN FALLS OUT ..... Repeat No. 13 "Gruesome Tales No. 2" ..... 1 Min.

*Maestoso*

38 (Title) HOLD THE EDITION ..... Fuga (Gabriel Marie) ..... 1 1/4 Min.

*All<sup>o</sup> vivo*

*Copyr. 1918 Ricordi*

39 (Action) APE SEEN CARRYING JUDGE ..... Repeat No. 35 "Entr'acte" (Start "FF") ..... 1 3/4 Min.

*Mod<sup>to</sup>*

40 (Action) APE ENTERS ANN'S ROOM ..... Repeat No. 13 "Gruesome Tales No. 2" ..... 4 Min.

*Maestoso*

NOTE: Start "FF"; play once through.  
SEGUE: ..... Coriolan (Beethoven)

*All<sup>o</sup> con brio*

*Copyr. Carl Fischer*

41 (Action) APE GRABS DR. CORIOLIS ..... Repeat No. 13 "Gruesome Tales No. 2" (Start "FF") ..... 1 Min.

*Maestoso*

42 (Action) LOWE ENTERS ..... Protestation (Kay) ..... 2 Min.

*Agitato*

*Copyr. 1926 Forster Music Pub.*

43 (Action) ANN RUNS OVER TO LOWE ..... Repeat Theme No. 24 ..... 1 3/4 Min.

*Valse lento*

THE END

Printed in U. S. A.

Complete orchestrations and single piano parts of each separate number contained hereon, can be purchased from CAMEO MUSIC SERVICE CORPORATION, 315-317 WEST 47TH STREET, NEW YORK CITY.

201010294:0181