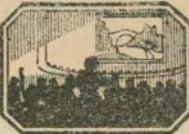


Thematic Music  Cue Sheet

M. J. MINTZ (PATENT)
JULY 31, 1923.

ADOLPH ZUKOR and JESSE L. LASKY
present

EMIL JANNINGS

in

"SINS OF THE FATHERS"

with

Ruth Chatterton and Barry Norton

A Ludvig Berger Production

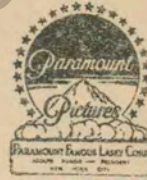
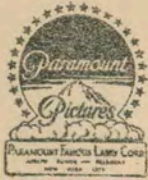
Story by Norman Burnstine

Adaptation and continuity by E. Lloyd Sheldon

B. P. Schulberg, General Manager, West Coast Productions

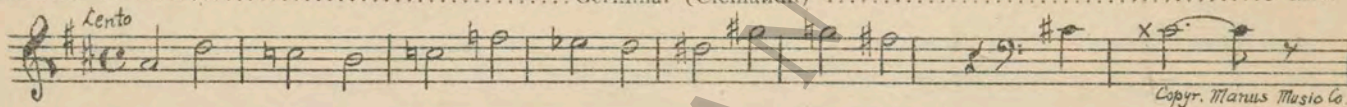
Compiled by James C. Bradford

Footage 7761 feet

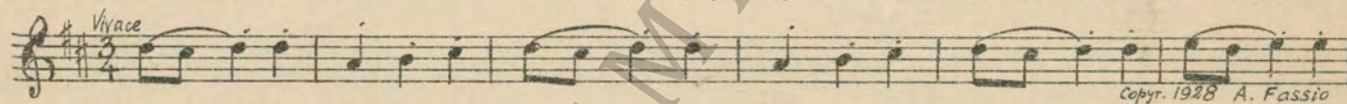


A Paramount Picture

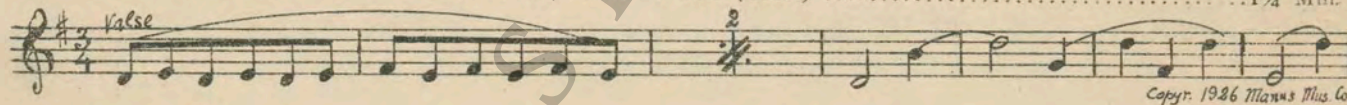
- 1 AT SCREENING Germinal (Clemendh) 1 Min.



- 2 (Action) FADE-IN HOTEL KITCHEN Scherzo (Palumbo) 1 3/4 Min.



- 3 (Action) COUPLE IN EVENING DRESS ENTER RESTAURANT Brise du Soir (Gillet) 1 1/4 Min.



- 4 (Action) LOBBY OF HOTEL Doux Murmure (Gillet) 1 Min.



- 5 (Title) YOUR LITTLE GIRL IS HERE Reproach (Zamecnik) 1/2 Min.



- 6 (Action) WIFE IN BED Amorous Adventure (Bradford) 1 1/2 Min.



- 7 (Action) WILHELM STARTS TO HURRY AROUND ROOM WITH BABY Scherzo (Palumbo) 3/4 Min.



- 8 (Title) MAMMA, GUESS WHAT OUR BOY WILL BE.. Romance sans Paroles (Davidoff) 3/4 Min.



Copyright. 1923, Sofermer

9 (Title) IN JUST A FEW YEARS..... Bierwalzer (See) 1¼ Min.

Musical notation for item 9, starting with a treble clef, a 3/4 time signature, and the tempo marking "Mod." The melody consists of eighth and sixteenth notes.

Copyr. Carl Fischer

10 (Title) MAMMA, WHERE IS TOMMY'S BREAKFAST?. BOY THEME: Tendre Aveu (Schutt) 3 Min.

Musical notation for item 10, starting with a treble clef, a 2/4 time signature, and the tempo marking "And^{te} con moto". The melody features eighth and sixteenth notes.

Second line of musical notation for item 10, continuing the melody.

Third line of musical notation for item 10, including the tempo marking "loco" and a key signature change to one sharp.

Copyr. 1913 Walter Jacobs

11 (Action) OTTO ENTERS STORE MOTHER THEME: Elegie (Lubomirsky) 1¼ Min.

Musical notation for item 11, starting with a treble clef, a 3/4 time signature, and the tempo marking "Mod." The key signature has two flats.

Second line of musical notation for item 11, including the tempo marking "loco" and a key signature change to one flat.

Third line of musical notation for item 11, featuring triplets and a key signature change to one sharp.

Fourth line of musical notation for item 11, including the tempo marking "loco" and a key signature change to one flat.

Copyr. 1918 J. Schirmer

12 (Action) OTTO FIXING TRAY OF FOOD FOR TOMMY. Celebrated Canzonetta (Mendelssohn) 1¼ Min.

Musical notation for item 12, starting with a treble clef, a 2/4 time signature, and the tempo marking "Alleg^{ro}". The key signature has two flats.

Copyr. 1926 J. Schirmer

13 (Action) INSERT—"TODAY'S MENU" Bagatelle No. 1 (Dvorak) ¾ Min.

Musical notation for item 13, starting with a treble clef, a 2/4 time signature, and the tempo marking "Alleg^{ro}". The key signature has one sharp.

Copyr. 1926 E. Ascher

14 (Action) FADE-IN STAGE—SPENGLER SINGING..... SPENGLER THEME: Young Werner's Parting Song (Nessler) 1¼ Min.

Musical notation for item 14, starting with a treble clef, a 3/4 time signature, and the tempo marking "And^{te} con moto". The key signature has two flats.

Second line of musical notation for item 14, including the tempo marking "loco" and a key signature change to one flat.

Third line of musical notation for item 14, including the tempo marking "loco" and a key signature change to one sharp.

Fourth line of musical notation for item 14, including the tempo marking "loco" and a key signature change to one flat.

Fifth line of musical notation for item 14, including the tempo marking "loco" and a key signature change to one sharp.

Copyr. Manus Music Co.

15 (Action) HE FINISHES—APPLAUSE Prattle (Lowitz) 1 Min.

Acc^o mod. Copyr. 1927 J. Schirmer

16 (Action) DANCING STARTS IN HALL Girls of Baden (Komzak) 1¼ Min.

Valse Copyr. Manus Music Co.

17 (Action) CORNET PLAYER PLAYS CALL Trumpet Call ¼ Min.

18 (Title) NOTE: Roll on side Drum accompanying call. THIS IS LADIES CHOICE Nola (Arndt) 1¾ Min.

Acc^o Copyr. 1922 Sam Fox.

19 (Action) ORCHESTRA STOPS GRETA THEME: Diabolical Allegro (Bergunker) ½ Min.

Acc^o

Copyr. 1927 J. Schirmer

20 (Action) MOTHER AND CHILDREN REACH HOME.... MOTHER THEME: Elegie (Lubomirsky) 2 Min.

Mod. Copyr. 1918 J. Schirmer

21 (Action) FLASH-BACK TO PARTY Somebody (Little) 2¼ Min.

Acc^o Copyr. 1923 Robbins Music Co.

22 (Action) PHONOGRAPH STARTS Ain't We Got Fun (Whiting) 1¼ Min.

Mod. Copyr. 1921 J. H. Remick Co.

23 (Action) NOTE: Play on phonograph. WIFE COLLAPSES MOTHER THEME: Elegie (Lubomirsky) 2½ Min.

Mod. Copyr. 1918 J. Schirmer

24 (Action) NOTE: Play very slowly—"PP" con sordini. FADE-IN BRIDE AND GROOM GRETA THEME: Diabolical Allegro (Bergunker) ¾ Min.

Acc^o Copyr. 1927 J. Schirmer

NOTE: Play slower this time.

25 (Action) CHANGE OF SCENE Appassionata (Clutsam) 3¼ Min.

Musical notation for item 25. Includes tempo marking *All.^o con brio* and copyright notice *Copyr. 1926 Hawkes & Son*.

26 (Action) INSERT—"PROHIBITION A FACT" Poeme Dramatique (Fourdrain) 2¼ Min.

Musical notation for item 26. Includes tempo marking *Sost.* and copyright notice *Copyr. Mannus Music Co.*

27 (Title) TWELVE O'CLOCK Auld Lang Syne (Catlin) 1¼ Min.

Musical notation for item 27. Includes tempo marking *Mod. Maestoso* and copyright notice *Copyr. 1912 Carl Fischer*.

28 (Action) DOOR CLOSÉS—SHADES PULLED DOWN.... SPENGLER THEME: Young Werner's Parting Song (Nessler) 1½ Min.

Musical notation for item 28. Includes tempo marking *And. con moto* and copyright notice *Copyr. Mannus Music Co.*

29 (Title) WE CAN SELL THIS La Fille du Contrebandier (Mouton) (From No. 7) ¾ Min.

Musical notation for item 29. Includes tempo marking *All.^o non troppo* and copyright notice *Copyr. 1925 Mannus Music Co.*

30 (Action) SPENGLER AND BOY IN ROOM BOY THEME: Tendre Aveu (Schutt) ½ Min.

Musical notation for item 30. Includes tempo marking *And.^{tino} con moto* and copyright notice *Copyr. 1913 Walter Jacobs*.

31 (Action) FLASH TO RUM RUNNER Ferocity (Carrozzini) 1½ Min.

Musical notation for item 31. Includes tempo marking *Agitato* and copyright notice *Copyr. 1926 Sonnemann Co.*

32 (Title) SPENGLER'S BUSINESS GREW NOTE: Produce effect of motor and firing on rum runner. Impression Dramatique (Bradford) 2½ Min.

Musical notation for item 32. Includes tempo marking *All.^o Agitato* and copyright notice *Copyr. 1927 Robbins Music Co.*

33 (Action) INSERT—TELEGRAM FROM TOMMY Passion (Borch) 2 Min.

Musical notation for item 33. Includes tempo marking *And. Appass.* and copyright notice *Copyr. 1919 Carl Fischer*.

34 (Action) FATHER SEES FLASK IN TOMMY'S POCKET BOY THEME: Tendre Aveu (Schutt) 1¼ Min.

Musical notation for item 34. Includes tempo marking *And.^{tino} con moto*.

Musical notation for item 34 (continued).

Musical notation for item 34 (continued). Includes copyright notice *Copyr. 1913 Walter Jacobs*.

35 (Title) WHY THAT'S COUNT MORETTI Scherzando Hurry (Frey) 3 Min.

Scherzando

Copyright 1925 Robbins Music Co.

36 (Title) I KNOW YOU ARE A GENTLEMAN Old Song (Borch) 3/4 Min.

All.^o mod.

Copyright 1928 E. F. Kalmus

37 (Action) SPENGLER FIXING TABLE Suite Domestica No. 1 (Riesefeld) 1 Min.

Mod.

Copyright 1928 E. F. Kalmus

38 (Action) TOM LEAVES SPENGLER THEME: Young Werner's Parting Song (Nessler) 1 1/2 Min.

And. con moto

Copyright Manus Music Corp

39 (Action) FADE-IN CAFE Sunny Skies (Gilbert) 1 1/4 Min.

Dance Tempo

Copyright 1928 E. B. Marks Co.

40 (Action) MAN TAKES DRINK FROM TOM L'Epouvante (Tremisot) 1 1/2 Min.

All.^o

Copyright Manus Music Co.

41 (Action) TOM ENTERS HOME Agitation Poignante (Gabriel Marie) 3 1/2 Min.

Vivace

Copyright Manus Music Co.

42 (Action) DOCTOR EXTINGUISHES LIGHTS Tristesse (Bradford) 2 1/2 Min.

Valse Lento

Copyright 1928 Carl Fischer

43 (Title) BUT HE WILL BE BLIND Berceuse (Jarnefeld) 1/2 Min.

And.^{te}

Copyright Carl Fischer

44 (Action) INSERT SPENGLER IN TOMBS Lamento from Eugene Onegin (Tschaikowsky) 1 3/4 Min.

And.^{te}

Copyright 1926 Manus Music Co.

45 (Action) SPENGLER AS PRISONER SPENGLER THEME: Young Werner's Parting Song (Nessler) 2 Min.

And. con moto

Copyright Manus Music Co.

46 (Action) INSERT—FAIRFIELD PARK Shenandoah (Bendel) 1 3/4 Min.

Musical notation for item 46, including a treble clef, a key signature of one flat, and a 2/4 time signature. The tempo marking is *Mod.*. The copyright notice is *Copyr. 1906 Sam Fox*.

47 (Action) SPENGLER SEES TOM SEATED AT TABLE... BOY THEME: Tendre Aveu (Schutt) 3 Min.

Musical notation for item 47, including a treble clef, a key signature of one flat, and a 2/4 time signature. The tempo marking is *And^{te} con moto*. The copyright notice is *Copyr. 1913 W. Jacobs*.

48 (Action) TOM BITES INTO ROLL Dear Little Boy of Mine (Ball) 1 1/2 Min.

Musical notation for item 48, including a treble clef, a key signature of one flat, and a 3/8 time signature. The tempo marking is *Mod. 8*. The copyright notice is *Copyr. 1918 M. Witmark & Sons*.

49 (Action) LITTLE GIRL APPEARS AT TABLE Poupee Valsante (Poldini) 1/4 Min.

Musical notation for item 49, including a treble clef, a key signature of two sharps, and a 3/4 time signature. The tempo marking is *Valse*. The copyright notice is *Copyr. 1908 Carl Fischer*.

50 (Action) SPENGLER RISES FROM TABLE SPENGLER THEME: Young Werner's Parting Song (Nessler) 2 Min.

Musical notation for item 50, including a treble clef, a key signature of one flat, and a 2/4 time signature. The tempo marking is *And^{te} con moto*. The copyright notice is *Copyr. Manus Music Co.*

THE END

Country of Origin, U. S. A.

Complete orchestrations and single piano parts of each separate number contained hereon, can be purchased from CAMEO MUSIC SERVICE CORPORATION, 315-317 WEST 47TH STREET, NEW YORK CITY.