

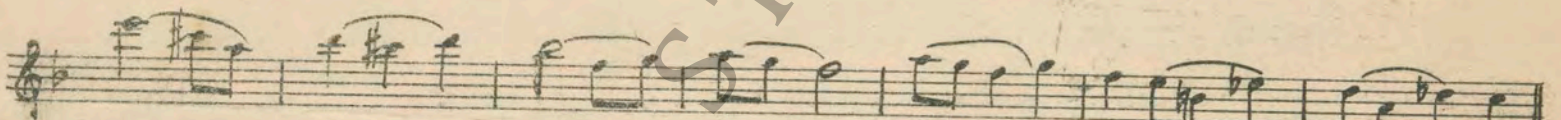
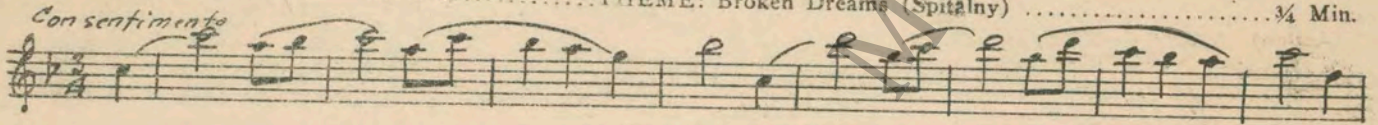
M. J. MINTZ (PATENT)
JULY 31, 1923.

WILLIAM FOX SPECIAL FILM PRODUCTION
EDMUND LOWE and LOIS MORAN

in
"MAKING THE GRADE"

Compiled by Michael P. Krueger
The timing is based on speed of 12 minutes per reel

- 1 AT SCREENING THEME: Broken Dreams (Spitalny) ¾ Min.



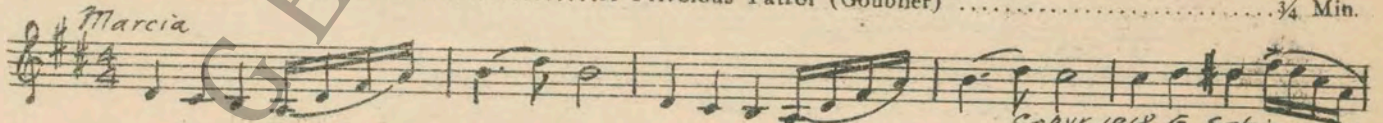
Copyright 1927 Sam Fox

- 2 (Title) THIS IS THE STORY OF HERBIE Poupee Valsante (Poldini) 1¼ Min.



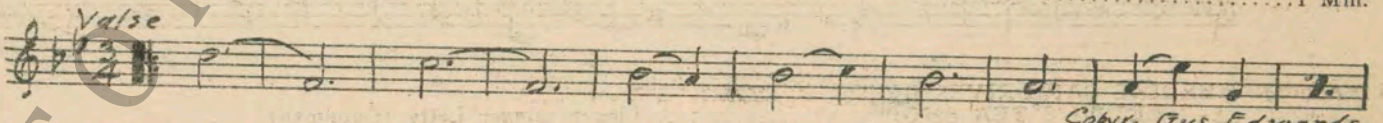
Copyright 1908 Carl Fischer

- 3 (Title) MASTER HERBERT A Frivolous Patrol (Goublier) ¾ Min.



Copyright 1918 G. Schirmer

- 4 (Title) THE DAILY TRIP TO SCHOOL School Days (Edwards) 1 Min.



Copyright Gus Edwards

- 5 (Title) NOTE: Play very quietly.
SIX YEARS LATER Sweetheart from "Maytime" (Romberg) 1¼ Min.



Copyright 1917 G. Schirmer

NOTE: Start at verse—play verse and chorus only.

6 (Title) THEN, YEARS LATER, ONE OF THOSE.....A Hot Time (Beyer)1 Min.

Musical notation for item 6, marked *Marcia*. Copyright: Carl Fischer.

7 (Title) I'M SO EXCITED I CAN SCARCELY.....Sweetheart from "Maytime" (Romberg) (Chorus).....½ Min.

Musical notation for item 7, marked *All^o*. Copyright: 1917 G. Schirmer.

8 (Action) TRAIN ARRIVES Gee, I'm Glad I'm Home (Monaco)1 Min.

Musical notation for item 8, marked *Mod^{to}*. Copyright: 1927 De Sylva Brown Henderson.

9 (Action) LADY GOES OVER TO HERBIE WITH FLOWERS Repeat No. 7 "Sweetheart" (very quietly)1¼ Min.

Musical notation for item 9, marked *All^o*.

10 (Action) FADE-IN TO HOME Zigzag (Ferber)1 Min.

Musical notation for item 10, marked *Mod^{to} assai*. Copyright: O. Ditson & Co.

11 (Title) DO YOU HAPPEN TO KNOW A GIRL..... Repeat No. 5 "Sweetheart"¾ Min.

Musical notation for item 11, marked *Mod^{to}*.

12 (Action) NOTE: Play pulsating and to action—verse and chorus. CLOSE-UP OF SIGN: "LETTIE'S TEA SHOP" Linger Longer Letty Selection (Goodman).....4¼ Min.

Musical notation for item 12, marked *All^o*. Copyright: 1920 Leo Feist.

13 (Title) LETTIE! DON'T YOU REMEMBER ME?..... Repeat No. 7 "Sweetheart"½ Min.

Musical notation for item 13, marked *All^o*.

14 (Action) AUTOMOBILE DRIVES UP Sweethearts On Parade (Lombardo)2 Min.

Musical notation for item 14, marked *Mod^{to}*.

15 (Action) HERBIE'S CAR DRIVES UP TO "LETTIE'S TEA SHOP" Linger Longer Letty (Goodman)1½ Min.

Musical notation for item 15, marked *Mod^{to}*. Copyright: 1920 Leo Feist.

16 (Title) NO DODSWORTH EVER GAVE UP THE SHIP Repeat No. 3 "Frivolous Patrol"2 Min.

Musical notation for item 16, marked *Marcia*.

17 (Action) BOARD OF DIRECTORS LEAVE You're the Cream in My Coffee (Henderson)..... 1 Min.

Mod^{to}

Copyr. 1928 De Sylva Brown Henderson

18 (Title) WHY DOES THAT FISHMONGER THUMP..... Repeat No. 15 "Linger Longer Letty"..... 3/4 Min.

Mod^{to}

19 (Title) NOW WHAT DO YOU WANT? Repeat Theme No. 1 1 Min.

Con sentimento

20 (Title) I LIKE MEN WHO CAN DO THINGS..... Repeat No. 15 "Linger Longer Letty"..... 1 1/2 Min.

Mod^{to}

21 (Title) TILL THE FIRST ROUND Jollifications (Noyes) 1 3/4 Min.

All^o con brio

Copyr. 1922 Hawkes & Son

22 (Action) HERBIE WALKS OUT ON STAGE Intermezzo Giocoso (Egener) 3/4 Min.

Scherzando

Copyr. 1927 Irving Berlin

23 (Title) THE QUEST FOR TUNA The Goofy Gob (McDonald) 2 1/4 Min.

All^o mod^{to}

Copyr. 1928 F. Fasio

24 (Action) MOTOR BOAT LEAVES Heave Ho (Copping) 4 Min.

All^o

Copyr. 1927 Irving Berlin

25 (Title) THERE MUST BE TUNA AROUND..... Rhapsodie from "Norwegian Suite" (Schytte)..... 4 1/2 Min.

All^o

Copyr. 1912 G. Schirmer

26 (Action) HERBIE GOES OVERBOARD Eccitamento (Retlaw) 2 1/4 Min.

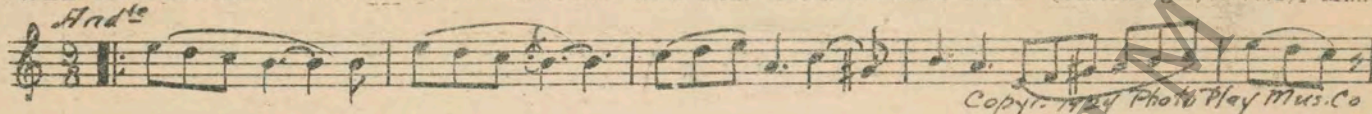
All^o agitato

Copyr. 1925 Feature Music Pub. Co

27 (Action) CHANGE OF SCENE TO "LETTIE'S TEA SHOP" Repeat Theme No. 1 2 Min.

Con sentimento

28 (Title) WELFARE WORK Pathos from "Incid. Miniature No. 2" (Schertzinger) 2½ Min.

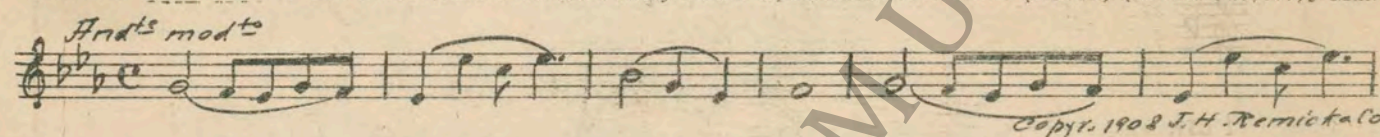
And^{te}

Copyr. 1924 Photo Play Mus. Co

29 (Action) HERBIE SEES BABY IN HIGH-CHAIR Marche Mignonne (Poldini) 1 Min.

Leggiero

Copyr. 1920 G. Schirmer

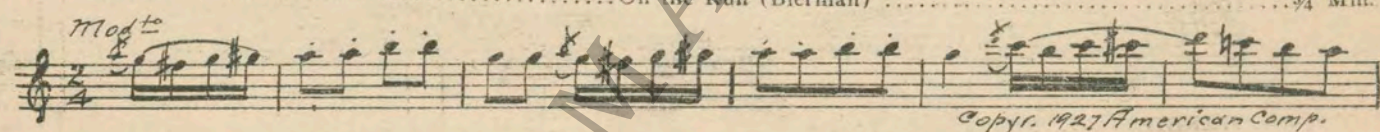
30 (Action) HERBIE STARTS TO SING Way Down Upon the Swanee River (Foster) (Direct Cue) ... ½ Min.

And^{te} mod^{to}

Copyr. 1908 J. H. Kernick & Co

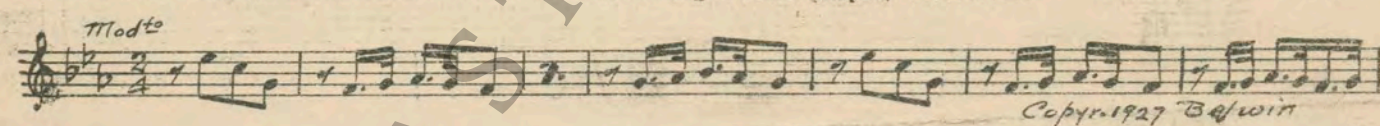
31 (Title) LADY! COME HOME AND TAKE CHARGE.... Repeat No. 29 "Marche Mignonne" ½ Min.

Leggiero

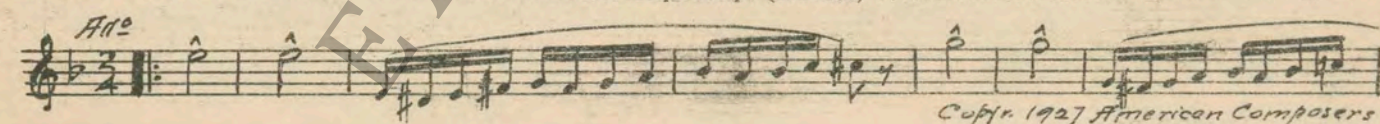

32 (Action) WOMAN COMES HOME AND FINDS HER CHILD MISSING On the Run (Bierman) ¾ Min.

Mod^{to}

Copyr. 1927 American Comp.

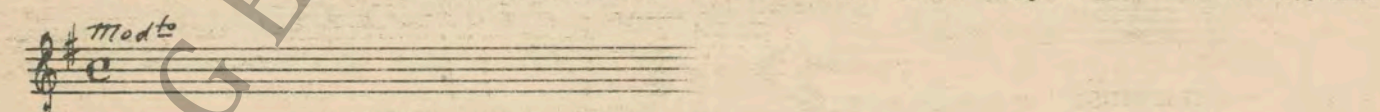
33 (Action) POLICEMAN LEAVES HERBIE Razzing Theme (Rapee) 1½ Min.

Mod^{to}

Copyr. 1927 Belwin

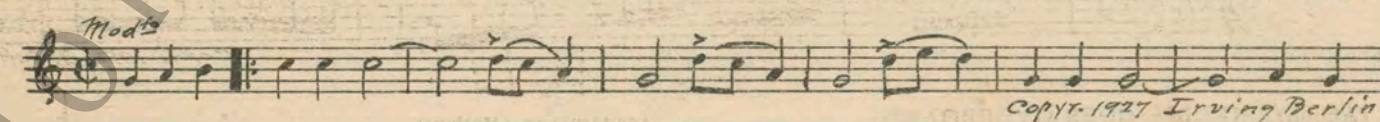
34 (Action) FIGHT STARTS Help! Help! (Kovacs) 1¾ Min.

All^o

Copyr. 1927 American Composers

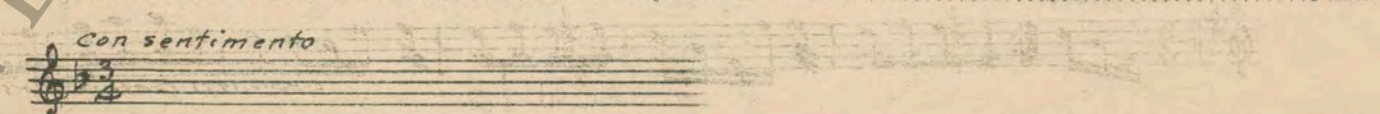
35 (Action) FADE-IN TO INTERIOR OF "LETTIE'S TEA SHOP" Repeat No. 15 "Linger Longer Letty" 1¾ Min.

Mod^{to}


36 (Action) FADE-IN TO HERBIE ON TRAIN I'll Just Roll Along (DeRose) 1 Min.

Mod^{to}

Copyr. 1927 Irving Berlin

37 (Title) LETTIE! WHAT ARE YOU DOING HERE?..... Repeat Theme No. 1 2 Min.

Con sentimento


Printed in U. S. A.

THE END

Complete orchestrations and single piano parts of each separate number contained hereon, can be purchased from CAMEO MUSIC SERVICE CORPORATION, 315-317 WEST 47TH STREET, NEW YORK CITY.