

M. J. MENTE (PATENT)
JULY 31, 1923.



JOHN GILBERT
in
MAN, WOMAN AND SIN

with
JEANNE EAGLES
A MONTA BELL PRODUCTION

Scenario by Alice D. G. Miller

Written and directed by Monta Bell

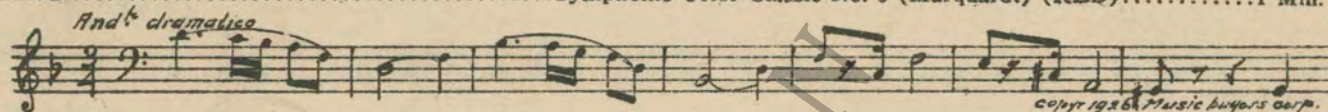
Compiled by Ernst Luz

A METRO-GOLDWYN-MAYER PICTURE

Length of film 7 reels (6230 feet)

Maximum projection time 1 hour, 5 minutes

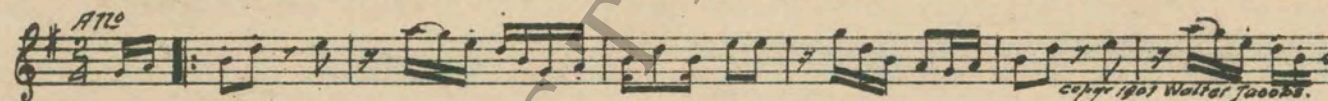
- 1 **AT SCREENING** Symphonic Color Classic No. 6 (Marquardt) (RED) 1 Min.



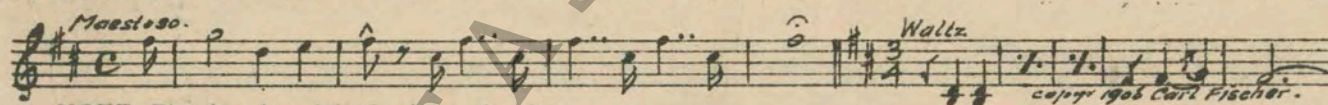
- 2 (Title) **THE STORY OF PEOPLE** Train effect by Drummer
3 (Action) **ONE SCENE** Symphonic Color Classic No. 6 (Marquardt) (DARK BLUE) ... 1 Min.



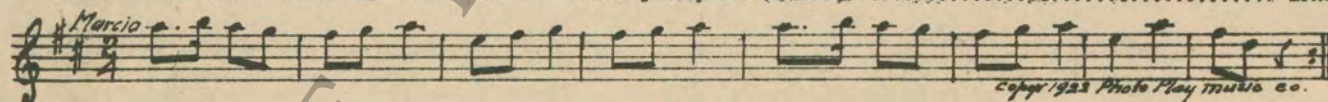
- 4 (Action) **BOY GETS UP AFTER TRAIN PASSES** Yazoo Buck (Godfrey) (Banjo) 3/4 Min.



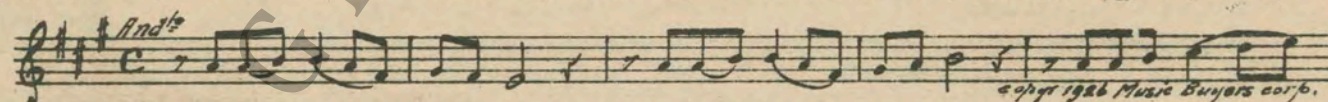
- 5 (Action) **BOY ENTERS HOME TO MOTHER** Love and Spring (Waldteufel) 1 1/2 Min.



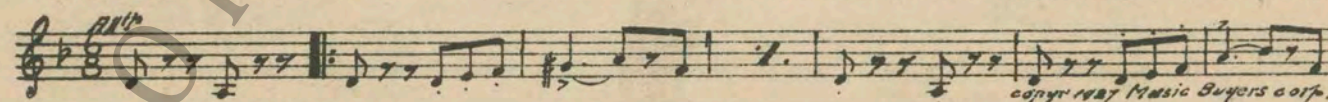
- 6 (Action) **FADE-OUT OF MOTHER AS BOY LEAVES HOUSE** Nursery Rhymes (Casini) 1/2 Min.



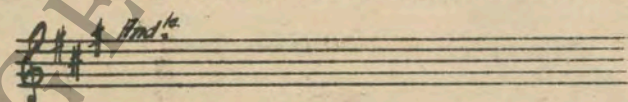
- 7 (Action) **GIRL OPENS DOOR FOR BOY** Symphonic Color Classic No. 6 (Marquardt) (WHITE) 1 1/4 Min.



- 8 (Title) **THERE WAS A HOUSE IN THE NEIGHBORHOOD** The Devil's Elixir (Marquardt) 2 Min.



- 9 (Action) **BOY COMES FROM GHOST HOUSE** Repeat No. 7 (WHITE) 1 1/4 Min.



- 10 (Action) **WOMAN TAKES GIRL AWAY FROM BOY** Hot Foot (Lake) (Banjo) 1/2 Min.



11 (Action) BOY ENTERS HOUSE TO MOTHER Afterglow (Clutsam) 1 Min.

Musical notation for item 11, featuring a treble clef, common time signature, and a melody with a *And^{te}* tempo marking. Copyright 1926 Hawkes & Son.

12 (Title) ODD JOBS, NEWSBOY Little Trifler (Barnard) 2 Min.

Musical notation for item 12, featuring a treble clef, 2/4 time signature, and a melody with a *Mod^{to}* tempo marking. Copyright 1923 Carl Fischer.

13 (Action) EDITOR'S OFFICE SCENE—TELEPHONE GIRL SHOWS Magic Shadows (Zardo) 1½ Min.

Musical notation for item 13, featuring a treble clef, 8/8 time signature, and a melody with a *And^{te}* tempo marking. Copyright 1912 Jos. W. Stern & Co.

14 (Action) MAN PULLS OUT LIGHT SWITCHES Symphonic Color Classic No. 6 (Marquardt) (DARK GREEN) .. 1 Min.

Musical notation for item 14, featuring a treble clef, common time signature, and a melody with a *Mod^{to}* tempo marking. Copyright 1926 Music Buyers Corp.

15 (Action) JOHN GILBERT KNOCKS ON DOOR I'm Gonna Dance Wif De Guv Wot Brung Me (Archer) ¾ Min.

Musical notation for item 15, featuring a treble clef, 2/4 time signature, and a melody with a *Mod^{to}* tempo marking. Copyright 1927 Leo Feist, Inc.

16 (Action) JOHN GILBERT TAKES DRINK Repeat No. 14 (DARK GREEN) ¼ Min.

Musical notation for item 16, showing a treble clef, common time signature, and a few notes with a *Mod^{to}* tempo marking.

17 (Action) GIRL KISSES JOHN GILBERT SECOND TIME Symphonic Color Classic No. 6 (Marquardt) (DARK BLUE) .. ¼ Min.

Musical notation for item 17, featuring a treble clef, 2/4 time signature, and a melody with a *Full Molt* tempo marking. Copyright 1926 Music Buyers Corp.

18 (Action) GILBERT TAKES DRUNKEN MAN INTO LUNCH ROOM Souvenir de Capri (Bece) 1½ Min.

Musical notation for item 18, featuring a treble clef, 3/4 time signature, and a melody with a *And^{te}* tempo marking. Copyright 1920 G. M. Roehr.

19 (Action) FADE-OUT OF MOTHER IN BED Tender Heart (Baga) 1½ Min.

Musical notation for item 19, featuring a treble clef, 2/4 time signature, and a melody with a *Molto* tempo marking. Copyright 1926 Hawkes & Son.

20 (Action) TELEPHONING SCENES Valse Fascinante (Kempinski) (LIGHT GREEN) 2 Min.

Musical notation for item 20, featuring a treble clef, 3/4 time signature, and a melody with a *Non troppo lento* tempo marking. Copyright 1927 Irving Berlin Inc.

21 (Title) RENT ONE Laughing Eyes (Silberberg) 1½ Min.

Musical notation for item 21, featuring a treble clef, 2/4 time signature, and a melody with an *All^{te}* tempo marking. Copyright 1923 M. Witmark & Son.

22 (Action) JOHN GILBERT ENTERS AUTO Valse Fascinante (Kempinski) (LIGHT GREEN) ½ Min.

Musical notation for item 22, featuring a treble clef, 3/4 time signature, and a melody with a *Non troppo lento* tempo marking. Copyright 1927 Irving Berlin Inc.

NOTE: Play eight bars or thirty seconds, and segue.
SEGUE: Yankee Rose (Holden) (Band—Patriotic style)

Musical notation for the segue, featuring a treble clef, common time signature, and a melody with a *Mod^{to}* tempo marking. Copyright 1926 Irving Berlin Inc.

23 (Action) GIRL LOOKS AT WRISTWATCH Symphonic Color Classic No. 6 (Marquardt) (DARK GREEN), 1½ Min.

Musical notation for item 23, featuring a treble clef, common time signature, and a melody with a *Mod^{to}* tempo marking. Copyright 1926 Music Buyers Corp.

24 (Action) GILBERT BEGINS TO TYPEWRITE Flimsy Flounces (Hersom) 2¼ Min.

Musical notation for item 24, featuring a treble clef, a key signature of one sharp (F#), and a 2/4 time signature. The tempo is marked *Mod^{to}*. The piece concludes with the instruction *Delicato con moto*. Copyright information: *copyr 1923 Walter Jacobs Inc.*

25 (Action) GILBERT SITS DOWN IN SHIPPING ROOM.. Wings of Love (Fuzy) 1¼ Min.

Musical notation for item 25, featuring a treble clef, a key signature of one sharp (F#), and a 2/4 time signature. The tempo is marked *And^{ro}*. Copyright information: *copyr 1924 Ludwig Music Pub. Co.*

26 (Action) CARD—"THIS IS THE MOST PERFECT ROSE" Repeat No. 20 (LIGHT GREEN) 2½ Min.

Musical notation for item 26, featuring a treble clef, a key signature of one sharp (F#), and a 2/4 time signature. The tempo is marked *Nen troppo lento.*

27 (Action) TELEPHONING SCENE Symphonic Color Classic No. 6 (Marquardt) (RED)..... 1 Min.

Musical notation for item 27, featuring a bass clef, a key signature of one sharp (F#), and a 2/4 time signature. The tempo is marked *And^{to} dramatico*. Copyright information: *copyr 1926 Music Buyers Corp.*

28 (Action) FADE-OUT OF HALL SCENE AFTER TITLE: "I'LL WALK" Polly (Zamecnik) 1 Min.

Musical notation for item 28, featuring a treble clef, a key signature of one sharp (F#), and a 2/4 time signature. The tempo is marked *Mod^{to} va²*. Copyright information: *copyr 1926 Sam Fox Pub. Co.*

29 (Title) DO LET'S GET OUT OF THIS AWFUL CROWD Symphonic Color Classic No. 6 (Marquardt) (WHITE)..... 1½ Min.

Musical notation for item 29, featuring a treble clef, a key signature of one sharp (F#), and a 2/4 time signature. The tempo is marked *And^{to}*. Copyright information: *copyr 1926 Music Buyers Corp.*

30 (Action) FADE-OUT AS GILBERT AND GIRL LEAVE PARK Repeat No. 27 (RED)3 1½ Min.

Musical notation for item 30, featuring a bass clef, a key signature of one sharp (F#), and a 2/4 time signature. The tempo is marked *And^{to} dramatico*.

31 (Title) NO, DON'T GO Stepping Stones (Reeves) ½ Min.

Musical notation for item 31, featuring a treble clef, a key signature of one sharp (F#), and a 2/4 time signature. The tempo is marked *Mod^{to}*. Copyright information: *copyr 1915 Harpkes Bros.*

32 (Action) ONE PARK SCENE—GILBERT SEES CARD ON BOUQUET OF FLOWERS Valse Fascinante (Kempinski) (LIGHT GREEN)..... 2½ Min.

Musical notation for item 32, featuring a treble clef, a key signature of one sharp (F#), and a 2/4 time signature. The tempo is marked *Nen troppo lento*. Copyright information: *copyr 1927 Irving Berlin Inc.*

33 (Action) GILBERT WALKS FROM ROOM WHERE GIRL IS SEEN ON COUCH Repeat No. 27 (RED) 1½ Min.

Musical notation for item 33, featuring a bass clef, a key signature of one sharp (F#), and a 2/4 time signature. The tempo is marked *And^{to} dramatico*.

34 (Action) GILBERT GIVES GIRL BIRTHDAY PRESENT. Repeat No. 29 (WHITE) 1¾ Min.

Musical notation for item 34, featuring a treble clef, a key signature of one sharp (F#), and a 2/4 time signature. The tempo is marked *And^{to}*.

35 (Action) GILBERT WALKS OUT OF ROOM AFTER KISSING GIRL..... Symphonic Color Classic No. 6 (Marquardt) (DARK BLUE).. ¾ Min.

Musical notation for item 35, featuring a treble clef, a key signature of one sharp (F#), and a 2/4 time signature. The tempo is marked *All^{to} Mod^{to}*. Copyright information: *copyr 1926 Music Buyers Corp.*

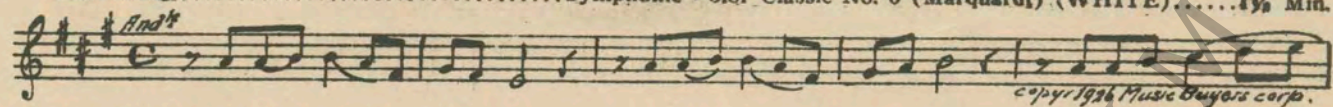
36 (Action) AFTER QUARREL IN HALL Symphonic Incidentals No. 7 (Marquardt)..... 1¼ Min.

Musical notation for item 36, featuring a treble clef, a key signature of one sharp (F#), and a 2/4 time signature. The tempo is marked *Mod^{to}*. Copyright information: *copyr 1927 Music Buyers Corp.*

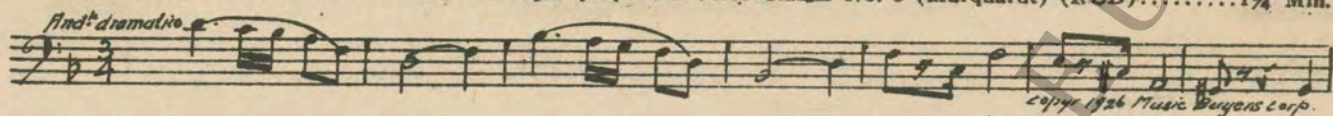
37 (Action) GILBERT IN KITCHEN WITH MOTHER..... Dram. Tension No. 2 (Ancliffe) 1¼ Min.

Musical notation for item 37, featuring a bass clef, a key signature of one sharp (F#), and a 2/4 time signature. The tempo is marked *Mod^{to}*. Copyright information: *copyr 1926 Basworth & Co.*

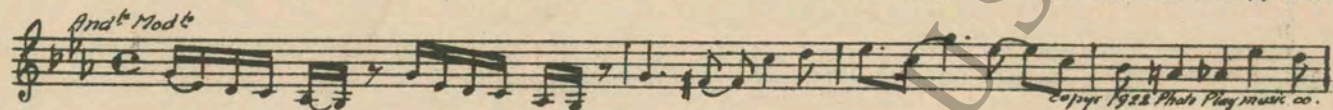
38 (Action) GILBERT WALKS OFF SCREEN FROM MOTHER Symphonic Color Classic No. 6 (Marquardt) (WHITE) 1 1/4 Min.



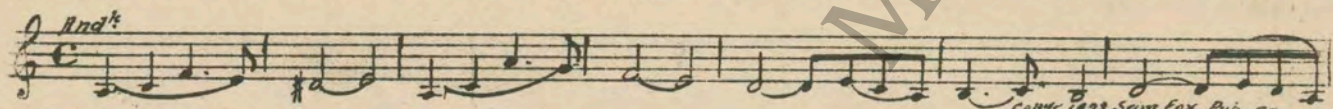
39 (Action) SOCIETY EDITOR KISSES GILBERT'S FOREHEAD Symphonic Color Classic No. 6 (Marquardt) (RED) 1 1/4 Min.



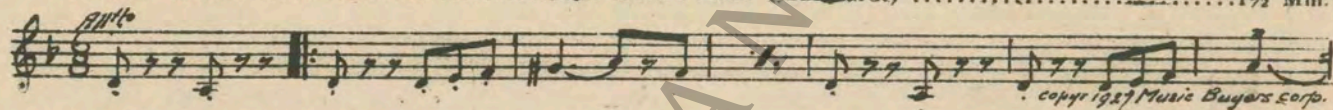
40 (Title) NOW WILL YOU GET OUT OF HERE Incid. Symphony No. 2 (Kempinski) 1/4 Min.



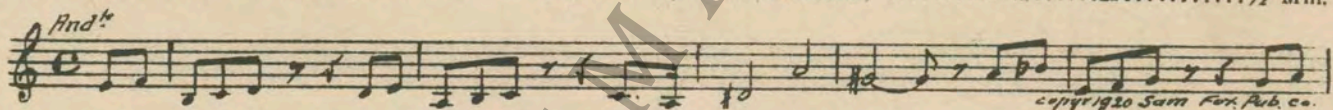
41 (Action) MAN HIT OVER HEAD—FALLS TO FLOOR.. Grief (Zamecnik) 3/4 Min.



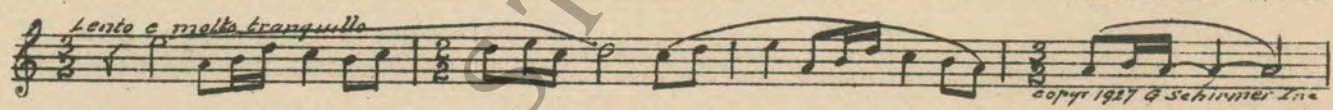
42 (Action) FADE-OUT OF MOTHER WITH FLAT IRON IN HAND The Devil's Elixir (Marquardt) 1 1/2 Min.



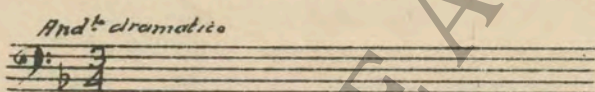
43 (Action) MOTHER WALKS FROM HQUSE..... Misterioso No. 5 (Zamecnik) 1/2 Min.



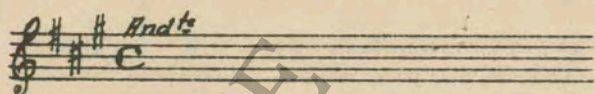
44 (Action) FADE-OUT OF MOTHER AND BOY Erom the North (Sibelius) 1 3/4 Min.



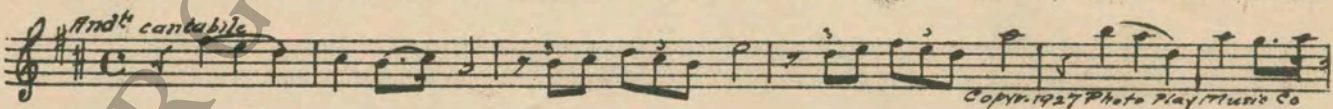
45 (Action) FADE-OUT OF GILBERT IN PRISON CELL... Repeat No. 39 (RED) 1 3/4 Min.



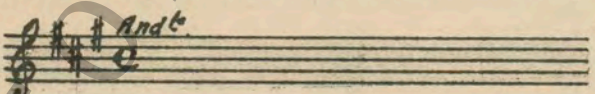
46 (Title) THE LAW MUST TAKE ITS COURSE Repeat No. 38 (WHITE) 1 Min.



47 (Action) MOTHER EMBRACES GIRL Albulblatt (Hilse) 1 Min.



48 (Action) AUTO DRIVES OFF Repeat No. 38 (WHITE) 1 Min.



THE END

NOTE: The repetition of numbers in this cue sheet is simplified by the use of the "LUZ" SYMPHONIC COLOR GUIDE, sold by Music Buyers Corporation, 1520 Broadway, New York City. The color suggested for repetition of numbers designates the Mood or Emotion and is used as a code for such repetitions.
Country of Origin, U. S. A.

Complete orchestrations and single piano parts of each separate number contained hereon, can be purchased from CAMEO MUSIC SERVICE CORPORATION, 312-317 WEST 4th STREET, NEW YORK CITY.