

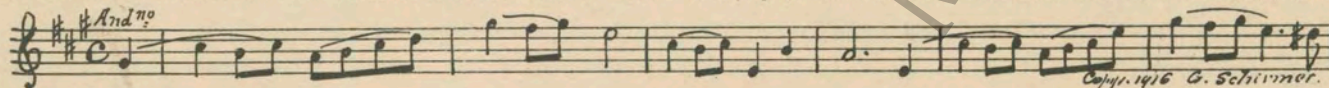
M. J. MINTZ (PATENT)
JULY 31, 1923.

Howard R. Hughes
presents
THOMAS MEIGHAN

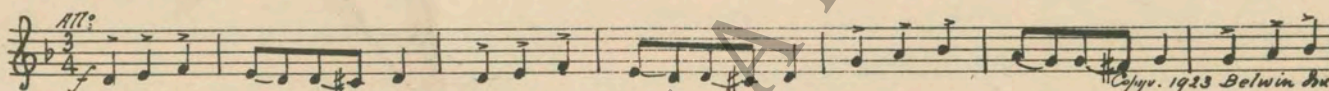
in
REX BEACH'S
"THE MATING CALL"

with
Evelyn Brent and Renee Adoree
A Caddo Production
Directed by James Cruze
Compiled by James C. Bradford
A Paramount Release

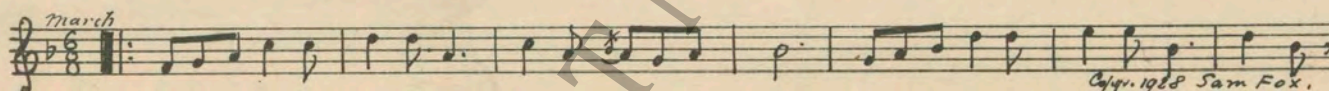
- 1 AT SCREENING An Old Love Story (Frommel) 2½ Min.



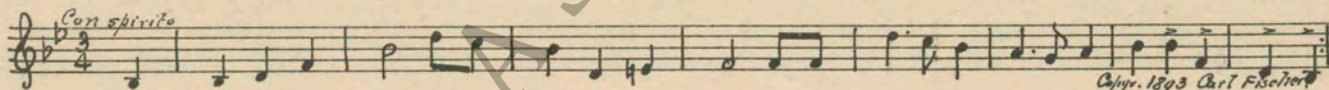
- 2 (Action) LES THROWS DOWN CARDS Rythmic Agitato (Boehnlein) ½ Min.



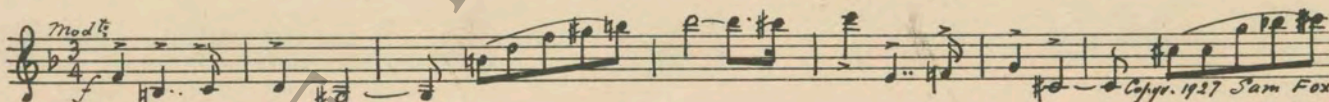
- 3 (Action) TRAIN PLATFORM The Sharpshooter (Brown) ½ Min.



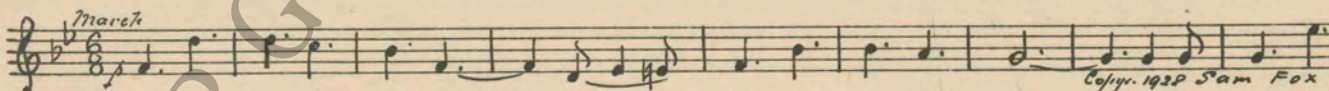
- 4 (Action) DRINK TOAST TO FLAG Star-Spangled Banner from "Nat'l. Melodies" ½ Min.



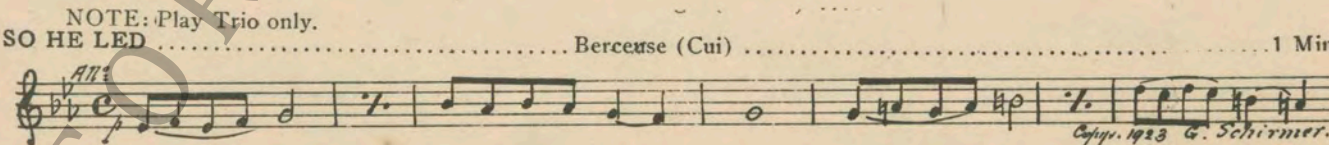
- 5 (Action) ROSE OFFERS TOAST TO LES Reproach (Zamecnik) ½ Min.



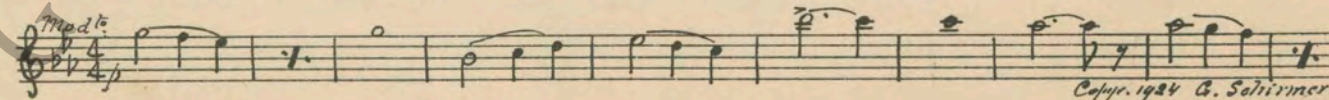
- 6 (Action) FLASH TO EMBARKING TROOPS The Ensign (Brown) ½ Min.



- 7 (Title) SO HE LED Berceuse (Cui) 1 Min.



- 8 (Title) TOMORROW Souvenir d'Amour (Conte) 2 Min.



9 (Title) WHY DIDN'T YOU LET ME KNOW Summer Skies (Loth) 1¼ Min.

Musical notation for item 9: Treble clef, key signature of two flats, common time. Tempo marking: *Molto Mod^{to}*. Copyright: *Copyr. 1927 American Composers.*

10 (Title) LET'S STOP AT YOUR PLACE Lament (Bierman) 1½ Min.

Musical notation for item 10: Treble clef, key signature of two flats, 3/4 time. Tempo marking: *And^{te} doloroso*. Copyright: *Copyr. 1927 American Composers.*

11 (Title) I THOUGHT YOU'D RATHER BE ALONE..... Lamento from "Eugene Onegin" (Tschaikowsky) 1½ Min.

Musical notation for item 11: Treble clef, key signature of one sharp, common time. Tempo marking: *And^{te}*. Copyright: *Copyr. 1926 Manus Music Co.*

12 (Action) LES PACING FLOOR ALONE Foot Steps (Bierman) 1¼ Min.

Musical notation for item 12: Treble clef, key signature of one sharp, 4/4 time. Tempo marking: *mod^{to} misterioso*. Copyright: *Copyr. 1928 American Composers*

13 (Title) HELLO ROSE ROSE THEME: Serenade (Rachmaninoff) 4¾ Min.

Musical notation for item 13: Treble clef, key signature of one sharp, 3/8 time. Tempo marking: *Tempo di Valse*, dynamic marking: *mf*. Copyright: *Copyr. 1918 Carl Fischer.*

Musical notation for item 13 (continued): Treble clef, key signature of one sharp, 3/8 time.

Musical notation for item 13 (continued): Treble clef, key signature of one sharp, 3/8 time.

Musical notation for item 13 (continued): Treble clef, key signature of one sharp, 3/8 time. Copyright: *Copyr. 1918 Carl Fischer.*

14 (Action) LES TAKES HOLD OF HER The Fall of Pompei (Leuschner) 1¾ Min.

Musical notation for item 14: Treble clef, key signature of two flats, common time. Tempo marking: *All^{to} molto a furioso*. Copyright: *Copyr. 1925 Albert Schaper.*

15 (Action) ROSE DRIVES UP TO HOME Third Misterioso a la Valse (Savino) 1¾ Min.

Musical notation for item 15: Treble clef, key signature of two flats, 2/4 time. Tempo marking: *All^{to} mod^{to}*. Copyright: *Copyr. 1928 Robbins Music Corp.*

16 (Title) WHERE WERE YOU? Dramatic Andante (Kempinski) 2 Min.

Musical notation for item 16: Treble clef, key signature of one sharp, common time. Tempo marking: *And^{te}*. Copyright: *Copyr. 1927 Irving Berlin.*

17 (Action) JESSE AND OLD MAN ENTER Around the Sundial (Castillo) 1¼ Min.

Musical notation for item 17: Treble clef, key signature of two sharps, 2/4 time. Tempo marking: *All^{to} mod^{to}*. Copyright: *Copyr. 1923 Walter Jacobs*

18 (Action) ROSE APPEARS AT LES' HOUSE WITH FLOWERS Air de Ballet (Herbert) ¾ Min.

Musical notation for item 18: Treble clef, key signature of two sharps, 3/4 time. Tempo marking: *mod^{to}*. Copyright: *Copyr. 1912 G. Schirmer.*

19 (Action) HOODED FIGURE APPEARS ORDER THEME: Gruesome Suspense (Beghon) 1¼ Min.

Musical notation for item 19, featuring a bass clef, 4/4 time signature, and tempo marking *Mod^{to}*. The score includes a key signature of one flat and a copyright notice: *Copyright 1927 Irving Berlin Inc.*

20 (Action) ROSE ENTERS Repeat Rose Theme No. 13 3 Min.

Musical notation for item 20, featuring a treble clef, 3/4 time signature, and tempo marking *Tempo di Valse*.

21 (Action) HE ENTERS WITH SECOND SACHEL Misterioso Dramatico No. 22 (Borch) 1¼ Min.

Musical notation for item 21, featuring a treble clef, 3/4 time signature, and tempo marking *All^o giusto*. The score includes a key signature of one flat and a copyright notice: *Copyright 1916 S. M. Berg.*

22 (Action) KNOCK ON DOOR Rhythmic Misterioso (Damesek) 3¾ Min.

Musical notation for item 22, featuring a treble clef, 3/4 time signature, and tempo marking *Mod^{to} dramatico*. The score includes a key signature of one flat and a copyright notice: *Copyright 1927 Irving Berlin.*

23 (Title) HENCEFORTH MR. HATTON Girl of My Dreams (Clapp) ¾ Min.

Musical notation for item 23, featuring a treble clef, 3/4 time signature, and tempo marking *Valse*. The score includes a key signature of one flat and a copyright notice: *Copyright 1927 Jack Mills.*

24 (Title) I SEE YOU HAD VISITORS Reverie d'Amour (D'Aquin) ¾ Min.

Musical notation for item 24, featuring a treble clef, 3/4 time signature, and tempo marking *And^{te}*. The score includes a key signature of one flat and a copyright notice: *Copyright 1925 Sonnemann Music.*

25 (Title) ELLIS ISLAND Premier Amour (Benoist) 2¾ Min.

Musical notation for item 25, featuring a treble clef, 3/4 time signature, and tempo marking *And^{te}*. The score includes a key signature of one flat and a copyright notice: *Copyright 1912 G. Schirmer.*

26 (Action) ENTER HOME Scene d'Amour (Baron) 2¼ Min.

Musical notation for item 26, featuring a treble clef, 3/4 time signature, and tempo marking *Adagio cantabile*. The score includes a key signature of one flat and a copyright notice: *Copyright 1927 Belwin Inc.*

27 (Action) GIRL IN NIGHTGOWN LOVE THEME: Magic Love (Bradford) 1¾ Min.

Musical notation for item 27, featuring a treble clef, 3/4 time signature, and tempo marking *Valse lente*. The score includes a key signature of two flats.

Musical notation for item 27, continuing the previous piece.

Musical notation for item 27, continuing the previous piece.

28 (Action) LES WITH TEAM AT RIVER BANK Butterflies (Seiler) 1 Min.

Musical notation for item 28, featuring a treble clef, 4/4 time signature, and tempo marking *Mod^{to} e grazioso*. The score includes a key signature of one flat and a copyright notice: *Copyright 1924 G. Schirmer.*

29 (Action) THROWS PAIL OF WATER ON ROSE Adventure d'Amour (Bradford) 2¼ Min.

Musical notation for item 29, featuring a treble clef, 3/8 time signature, and tempo marking *All^o*. The score includes a key signature of one flat and a copyright notice: *Copyright 1927 Robbins Music Corp.*

30 (Action) JESSE AND LON IN AUTO Appassionato No. 1 (Kempinski) 1½ Min.

Musical notation for item 30: Treble clef, key signature of one sharp (F#), 4/4 time signature. Tempo marking: *Mod^{to} con moto*. Copyright: *Copy. 1927 Irving Berlin*

31 (Title) SOMETHING'S TROUBLING YOU JESSE In a Kentish Garden (Rawlinson) 1½ Min.

Musical notation for item 31: Treble clef, key signature of one sharp (F#), 4/4 time signature. Tempo marking: *And^{te} sost.* Copyright: *Copy. 1924 Hawkes & Son.*

32 (Action) JESSE AND MARVIN Lamento from "Eugene Onegin" (Tschaikowsky) ¾ Min.

Musical notation for item 32: Treble clef, key signature of one sharp (F#), 4/4 time signature. Tempo marking: *And^{te}* Copyright: *Copy. 1926 Manus Music Co.*

33 (Action) LES SEES BODY OF JESSE IN WATER Disperazione (Gabriel Marie) 1 Min.

Musical notation for item 33: Treble clef, key signature of one sharp (F#), 4/4 time signature. Tempo marking: *And^{te} appassion.* Copyright: *Copy. 1918 G. Ricordi.*

34 (Action) LON WITH MEMBERS OF ORDER Repeat Order Theme No. 19 ½ Min.

Musical notation for item 34: Treble clef, key signature of one sharp (F#), 4/4 time signature. Tempo marking: *mod^{to}*

35 (Action) BURNING CROSS SEEN Bataille (Silver) 2¼ Min.

Musical notation for item 35: Treble clef, key signature of one sharp (F#), 4/4 time signature. Tempo marking: *Animato & mod^{to}* Copyright: *Edw. B. Marks Music Co.*

36 (Action) WIFE SCRUBBING PIG Animal Cartoonix No. 2 (Aborn) 1¼ Min.

Musical notation for item 36: Treble clef, key signature of one sharp (F#), 4/4 time signature. Tempo marking: *And^{te}* Copyright: *Copy. 1925 Edwin Inc.*

37 (Title) LESTER HATTON IS OUR NEXT March of the Phantom Hosts (Axt) 4¾ Min.

Musical notation for item 37: Treble clef, key signature of one flat (Bb), 4/4 time signature. Tempo marking: *Mod^{to} ala marcia* Copyright: *Copy. 1927 Robbins Music Corp.*

38 (Title) WHAT DO YOU WANT Repeat Order Theme No. 19 1½ Min.

Musical notation for item 38: Treble clef, key signature of one sharp (F#), 4/4 time signature. Tempo marking: *mod^{to}*

39 (Title) YOU ARE THE CAUSE OF Romantique (Gabriel Marie) 3¾ Min.

Musical notation for item 39: Treble clef, key signature of one flat (Bb), 4/4 time signature. Tempo marking: *All^o risoluto* Copyright: *Copy. Manus Music Co.*

40 (Title) WE'VE GOT TO FIX IT Repeat Order Theme No. 19 1 Min.

Musical notation for item 40: Treble clef, key signature of one sharp (F#), 4/4 time signature. Tempo marking: *mod^{to}*

41 (Action) WIFE SLEEPING—LES ENTERS Repeat Love Theme No. 27 ¾ Min.

Musical notation for item 41: Treble clef, key signature of one flat (Bb), 4/4 time signature. Tempo marking: *Valse lento*

Country of Origin, U. S. A.

THE END

Complete orchestrations and single piano parts of each separate number contained hereon, can be purchased from CAMEO MUSIC SERVICE CORPORATION, 315-317 WEST 47TH STREET, NEW YORK CITY.