

M. J. MINTZ (PATENT)  
JULY 31, 1923.



**"THE MODEL FROM MONTMARTRE"**

Produced by Leonce Perret

Compiled by James C. Bradford

*A Paramount Picture*

1. AT SCREENING ..... Nymphs Frolic (Bradford) ..... ¾ Min.

Copyright 1927 BELWIN INC

2. (Title) THE SIDEWALK CAFES OF PARIS ..... Nice-Excentric (Callemien) ..... 2¼ Min.

Copyright 1926 MANUS MUSICO

3. (Title) AN ODD THING ABOUT THE FRENCH IS... L'Amour (Christine) ..... 1 Min.

Copyright 1913 E. B. MARKS

4. (Action) DANCERS LEAVE FLOOR ..... March of the Marionettes (Savino) ..... ¾ Min.

Copyright 1927 PAUL WHITEMAN INC.

5. (Action) LOLETTA STARTS TO DANCE ..... Hop-A-Long (Herman) ..... ½ Min.

Copyright 1914 E. B. MARKS

6. (Action) PIERRE SHAVING ..... In the Latin Quarter (Axt) ..... 1 Min.

Copyright 1928 ROBBINS MUSIC CORP.

7. (Action) LOLETTA CLOSE-UP ..... LOVE THEME: Love's Festival (Axt) ..... 1¾ Min.

Copyright 1927 ROBBINS MUSIC CORP.

8. (Action) STREET SCENE ..... Passepied (Delibes) ..... 2¼ Min.

Copyright 1916 CARL FISCHER

9. (Title) I SOLD THE PAINTINGS ..... Deux Petites Danseuses (Levy) ..... 1 Min.

Copyright 1936 G. SCHIRMER

10. (Action) COLLECTOR AT DOOR ..... Remorse (Lowitz) ..... 1 Min.

Musical notation for item 10: Treble clef, C major, common time. Tempo: *Lento*. Dynamics: *p*. Includes a handwritten note "8va lower" and a copyright notice "COPYR. 1927 G. SCHIRNER".

11. (Action) LOLETTA OPENS ICE BOX ..... Escapade (Mouton) ..... 1 1/2 Min

Musical notation for item 11: Treble clef, C major, common time. Tempo: *All.<sup>o</sup> mod.*. Dynamics: *mf*. Includes a handwritten note "8va" and a copyright notice "COPYR. 1924 MANUS MUSIC CO".

12. (Action) PIERRE PAINTING MODEL ..... The Swan (St. Saens) ..... 3/4 Min.

Musical notation for item 12: Treble clef, C major, 4/4 time. Tempo: *Adagio*. Dynamics: *p*. Includes a handwritten note "8va" and a copyright notice "COPYR. 1906 CARL FISCHER".

13. (Title) EVERY YEAR THE UNKNOWN ARTISTS.... Molto Leggiero (Mouton) ..... 1/2 Min.

Musical notation for item 13: Treble clef, C major, 4/4 time. Tempo: *All.<sup>o</sup> mod.*. Dynamics: *mf*. Includes a handwritten note "8va" and a copyright notice "COPYR. 1924 MANUS MUSIC CO".

14. (Action) CAFE SCENE—AUCTION ..... Babillage (Gillet) ..... 2 3/4 Min.

Musical notation for item 14: Treble clef, C major, 4/4 time. Tempo: *All.<sup>o</sup>*. Dynamics: *f*. Includes a handwritten note "8va" and a copyright notice "COPYR. 1889 CARL FISCHER".

15. (Action) COAST SCENE ..... Repeat Love Theme No. 7 ..... 3 3/4 Min.

Musical notation for item 15: Treble clef, C major, common time. Tempo: *And.<sup>te</sup>*. Dynamics: *mf*.

16. (Title) AFTER FIVE YEARS ..... Tout en Rose (Scotto) ..... 1 1/4 Min.

Musical notation for item 16: Treble clef, C major, 4/4 time. Tempo: *Marcia*. Dynamics: *mf*. Includes a handwritten note "8va" and a copyright notice "COPYR. 1921 MARKS & CO".

17. (Action) INTERIOR OF CAFE ..... La Priere du Tzigane (Sperauza) ..... 1 M

Musical notation for item 17: Treble clef, C major, 4/4 time. Tempo: *VALSE LENTO*. Dynamics: *p*. Includes a handwritten note "8va" and a copyright notice "COPYR. E.B. MARKS".

18. (Action) THEY RETURN TO TABLE ..... PRINCESS THEME: Serenade (Rachmaninoff) ..... 1/2 Min.

Musical notation for item 18: Treble clef, C major, 3/8 time. Tempo: *VALSE*. Dynamics: *p*. Includes a handwritten note "8va" and a copyright notice "COPYR. 1918 CARL FISCHER".

19. (Action) FLASH-BACK TO CAFE ..... Carnival Revels (Egener) ..... 3/4 Min.

Musical notation for item 19: Treble clef, C major, 6/8 time. Tempo: *con spirito*. Dynamics: *mf*. Includes a handwritten note "8va" and a copyright notice "COPYR. 1928 SONNEMANN MUSIC CO".

20. (Action) LOLETTA IN BED WAITING ..... Evening (Jensen) ..... 2 Min.

Musical notation for item 20: Treble clef, C major, 4/4 time. Tempo: *And.<sup>te</sup>*. Dynamics: *p*. Includes a handwritten note "8va" and a copyright notice "COPYR. 1923 EMIL FISCHER".

21. (Action) PAGEANT—CARNIVAL ..... The Gay Party (Cafarella) ..... 2 1/4 Min.

Musical notation for item 21: Treble clef, C major, 4/4 time. Tempo: *All.<sup>o</sup> Brill.*. Dynamics: *f*. Includes a handwritten note "8va" and a copyright notice "COPYR. 1927 ROBBINS MUSIC CO".

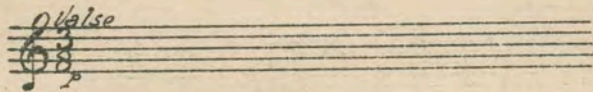
22. (Action) AUTO STOPS—BALCONY SCENE ..... Repeat Princess Theme No. 18 ..... 1/2 Min.

Musical notation for item 22: Treble clef, C major, 3/8 time. Tempo: *Walse*. Dynamics: *p*.

23. (Action) NIGHT SCENE ..... Love Song (Wright) ..... ¾ Min.



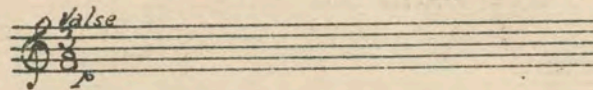
24. (Title) PIERRE'S NEW STUDIO IN PARIS ..... Repeat Princess Theme No. 18 ..... 1¾ Min.



25. (Action) CHANGE OF SCENE ..... Hindu (Zamecnik) ..... ½ Min.



26. (Action) PRINCESS ENTERS ..... Repeat Princess Theme No. 18 ..... ½ Min.



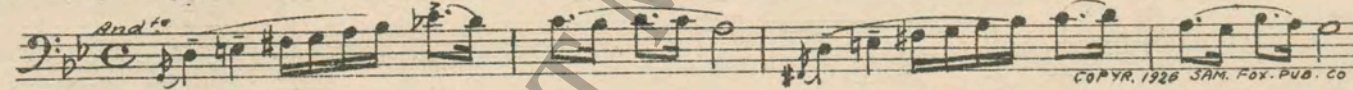
27. (Action) FLASH-BACK TO CABARET ..... Olga (Ring-Hager) ..... ¾ Min.



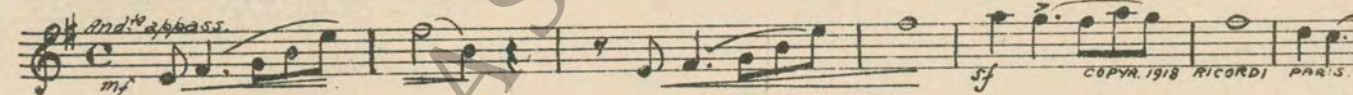
28. (Action) LOLETTA ENTERS ROOM ..... Valse Brune (Krier) ..... 1½ Min.



29. (Action) RICHARD ENTERS ..... RICHARD THEME: Chanson Algerian (Bradford) ..... ½ Min.



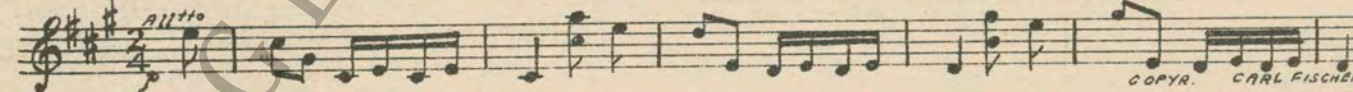
30. (Action) PIERRE KISSES PRINCESS ..... Disperazione (Gabriel Marie) ..... 2¾ Min.



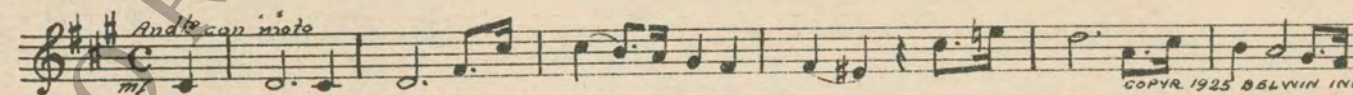
31. (Action) LOLETTA IN GARDEN ..... Chanson Melancholique (Collinge) ..... 1¾ Min.



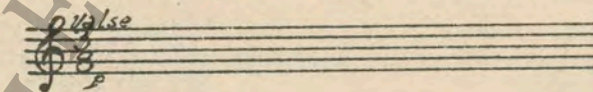
32. (Title) MY LAWYER IS HERE ..... Aubade Printaniere (Lacombe) ..... 1½ Min.



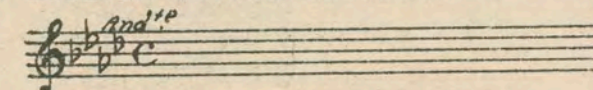
33. (Title) DON'T BE FOOLISH PIERRE ..... Dramatic Appassionato (Ciganeri) ..... 3¾ Min.



34. (Action) PRINCESS PLAYING PIANO ..... Repeat Princess Theme No. 18 ..... ½ Min.



35. (Action) LOLETTA WRITING LETTER ..... Repeat Love Theme No. 7 ..... 1¼ Min.



NOTE: Play "PP" con sordini, strings only, very plaintive.

36. (Action) FLASH TO STAGE ..... La Polichinette (Valverde) ..... 1/2 Min.

37. (Action) FLASH-BACK TO LOLETTA ..... Lamento from Eugene Onegin (Tschaikowsky) ..... 1/2 Min.

38. (Action) STREET SCENE ..... Repeat Richard Theme No. 29 ..... 2 1/2 Min.

39. (Action) FLASH TO PRINCESS AND PIERRE ..... Repeat Princess Theme No. 18 ..... 1 1/4 Min.

40. (Title) MONTHS OF UNDISTURBED REST ..... Mystic Magic (Bradford) ..... 3/4 Min.

41. (Action) LOLETTA DISAPPOINTED AT NOT RECEIVING MAIL ..... Pleureuse (Brunelli) ..... 2 Min.

42. (Action) PIERRE APPEARS ..... Homeland (Huerter) ..... 1 Min.

43. (Action) PARTY ..... Folies-Bergere (Lincke) ..... 1/2 Min.

44. (Action) PIERRE CONFRONTS PRINCESS ..... Appassionato (Borch) ..... 1 1/4 Min.

45. (Action) CHANGE OF SCENE ..... Liebestraum (Liszt) ..... 1 1/2 Min.

NOTE: Alternate between Piano and orchestra.  
46. (Action) LOLETTA STOPS PLAYING PIANO ..... Repeat Love Theme No. 7 ..... 1 Min.

Country of Origin, U. S. A. THE END

Complete orchestrations and single piano parts of each separate number contained hereon, can be purchased from CAMEO MUSIC SERVICE CORPORATION, 315-317 WEST 47TH STREET, NEW YORK CITY.