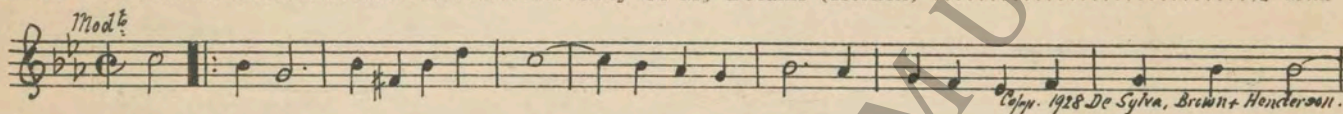


M. J. MINTZ (PATENT)
JULY 31, 1923.

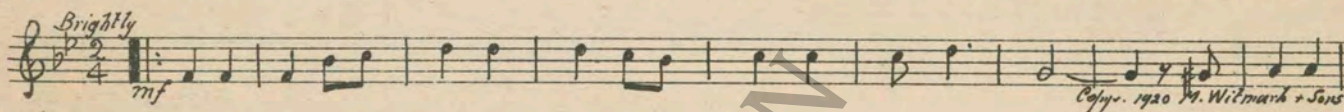
WILLIAM FOX FEATURE FILM PRODUCTION
MADGE BELLAMY
in
"MOTHER KNOWS BEST"

Compiled by Michael P. Krueger
The timing is based on speed of 12 minutes per reel

- 1 AT SCREENING Sally Of My Dreams (Kernell) ¾ Min.



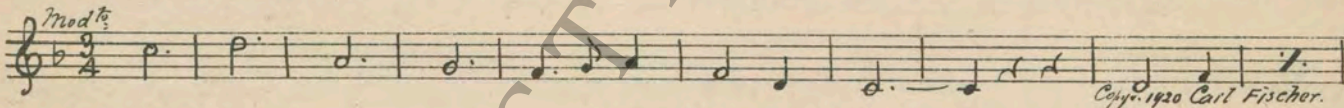
- 2 (Title) QUAIL'S DRUG STORE Mv Home Town is a One Horse Town (Silver) ½ Min.



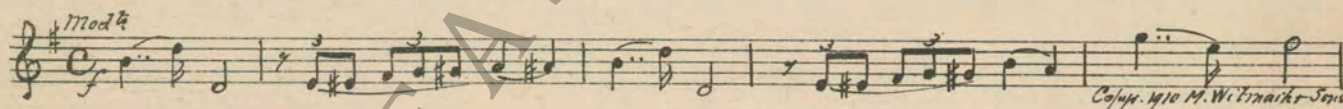
- 3 (Action) CLOSE-UP OF HAND GRABBING MONEY Réproach (Zamecnik) 1 Min.



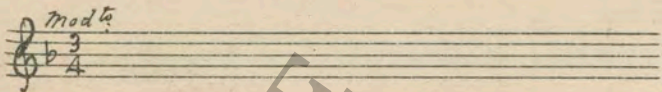
- 4 (Action) CHILD RUNS OUT OF STORE Sunshine of Paradise Alley from "Old Chestnuts" (Lake) ... ½ Min.



- 5 (Title) SALLY'S NOT GOING TO Heart to Heart (Trinkaus) ½ Min.



- 6 (Action) CHANGE TO STREET AGAIN Repeat No. 4 "Sunshine of Paradise Alley" 1 ¼ Min.



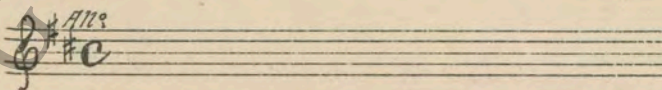
- 7 (Title) MARK MY WORDS Vanity (Jackson) 1 ¼ Min.



- 8 (Action) CHANGE TO ELECTRIC SIGN "CASINO" Happy Days (Levi) ¾ Min.



- 9 (Title) IT SHOULD HAVE Repeat No. 7 "Vanity" ½ Min.



10 (Action) TOE DANCER STARTS TO DANCENaila (Delibes)3/4 Min.

Tempo di Valse

Copr. 1913 Carl Fischer.

11 (Action) AFTER TOE DANCER IS FINISHEDRepeat No. 7 "Vanity"3/4 Min.

All:

12 (Action) LITTLE SALLY WALKS OUT ON STAGEThe Band Played On from "Old Timers" (Lake).....1 1/2 Min.

Waltz

Copr. Carl Fischer.

13 (Title) ANNOUNCE HER AGAINShe May Have Seen Better Days from "Old Timers" (Lake) 1 1/2 Min.

Valse

Copr. Carl Fischer.

14 (Title) YOU SHOULDN'T DISAPPOINTDespondency (Williams)1/2 Min.

And^{te} mod^{to}

Copr. 1927 Irving Berlin.

15 (Title) WITH THE DEATH OF ANBy-Gone Days (Pintel)2 3/4 Min.

And^{te}

Copr. 1922 Belwin Inc.

16 (Action) CHANGE OF SCENE TO EXTERIORExtase (Ganne)2 1/4 Min.

And^{te} Mod^{to}

Copr. 1917 Carl Fischer.

17 (Title) ON THE THRESHOLD OFPlay "If You Were the Only Girl" (Chappell).....1 3/4 Min.

18 (Action) SHADOW OF WOMAN IN PRIVATE OFFICE SEENChatter (Kahn)3/4 Min.

All:

Copr. 1926 Sonnemann Music Co

19 (Title) ISN'T SHE A NICE LITTLERepeat No. 17 "If You Were the Only Girl".....1 3/4 Min.

20 (Action) SECRETARY SEEN DURING DRAWING UP OF CONTRACTEn Visite (McDonald)3/4 Min.

All:

Copr. 1927 Cinemusic Service

21 (Action) CLOSE-UP OF GIRL AND BOYRepeat No. 17 "If You Were the Only Girl".....1 1/4 Min.

22 (Action) CLOSE-UP OF MAGAZINEAh! Sweet Mystery of Life (Herbert)1 1/4 Min.

And^{to}

Copr. M. Witmark & Sons.

23 (Action) SECOND TIME PIANIST IS SEENRepeat No. 1 "Sally of My Dreams"1 1/4 Min.

Mod^{to}

24 (Action) YOUNG MAN RUNS AWAY FROM PIANO.....Repeat No. 1 "Sally of My Dreams"—with orchestra.....1 3/4 Min.

Mod^{to}

25 (Action) YOUNG MAN SITS DOWN AT PIANO.....Repeat No. 1 "Sally of My Dreams" (Piano Solo)—Last 8 Bars of Chorus3/4 Min.

Mod^{to}

Copr. 1928 De Sylva, Brown & Henderson.

SEGUE: Sally of My Dreams (Kernell) (played by orchestra),

Musical notation for the Segue, starting with a treble clef, a key signature of one flat, and a common time signature. The tempo marking is *Mod^{to}*. The copyright notice is *Copyr. 1928 De Sylva, Brown & Henderson.*

26 (Action) MOTHER WALKS UP AFTER SALLY Love's Impulse (Jacquet) 1/4 Min.

Musical notation for item 26, starting with a treble clef, a key signature of one flat, and a common time signature. The tempo marking is *Agitato*. The copyright notice is *Copyr. 1927 Irving Berlin.*

27 (Action) YOUNG MAN RETURNS TO HIS ROOM..... Repeat No. 1 "Sally of My Dreams" 1/4 Min.

Musical notation for item 27, starting with a treble clef, a key signature of one flat, and a common time signature. The tempo marking is *Mod^{to}*.

28 (Action) "SALLY QUAIL" SEEN IN ELECTRIC LIGHTS Repeat No. 1 "Sally of My Dreams" in a different key..... 3/4 Min.

Musical notation for item 28, starting with a treble clef, a key signature of one flat, and a common time signature. The tempo marking is *mod^{to}*.

29 (Action) SALLY GOES OUT ON STAGE TO DO HER ACT For She's Ma Daisy (Lauder) 1 Min.

Musical notation for item 29, starting with a treble clef, a key signature of one flat, and a 2/4 time signature. The tempo marking is *All^{to}*. The copyright notice is *Copyr. Emil Ascher.*

30 (Action) SALLY FINISHES LAUDER IMPERSONATION Repeat No. 1 "Sally of My Dreams" 1 Min.

Musical notation for item 30, starting with a treble clef, a key signature of one flat, and a common time signature. The tempo marking is *mod^{to}*.

31 (Action) SALLY GOES ON STAGE TO DO JOLSON IMPERSONATION My Mammy (Donaldson) 3/4 Min.

Musical notation for item 31, starting with a treble clef, a key signature of one flat, and a common time signature. The tempo marking is *mod^{to}*. The copyright notice is *Copyr. 1921 Irving Berlin.*

32 (Action) SALLY FINISHES JOLSON IMPERSONATION. Repeat No. 1 "Sally of My Dreams"..... 1/2 Min.

Musical notation for item 32, starting with a treble clef, a key signature of one flat, and a common time signature. The tempo marking is *mod^{to}*.

33 (Action) SALLY GOES ON STAGE TO DO ANNA HELD IMPERSONATION I Just Can't Make My Eyes Behave (Edwards)..... 2 1/2 Min.

Musical notation for item 33, starting with a treble clef, a key signature of one flat, and a 4/4 time signature. The tempo marking is *mod^{to}*. The copyright notice is *Copyr. 1918 Gus Edwards*

34 (Action) SALLY FINISHES ANNA HELD IMPERSONATION Sally of My Dreams (Kernell) (Verse) 1 1/4 Min.

Musical notation for item 34, starting with a treble clef, a key signature of one flat, and a common time signature. The tempo marking is *mod^{to}*. The copyright notice is *Copyr. 1928 De Sylva, Brown & Henderson*

35 (Action) MOTHER AND SALLY RETURN TO DRESSING ROOM Enthusiasm (Schad) 1 1/4 Min.

Musical notation for item 35, starting with a treble clef, a key signature of two sharps, and a common time signature. The tempo marking is *Ecstatically*. The copyright notice is *Copyr. 1926 G. Schirmer.*

36 (Title) BESSIE AND BEN Gee, But It's Great to Meet a Friend (McGavisk)..... 2 1/4 Min.

Musical notation for item 36, starting with a treble clef, a key signature of one flat, and a 2/4 time signature. The tempo marking is *mod^{to}*. The copyright notice is *Copyr. 1912 J. Fred Helf Co.*

37 (Action) BESSIE AND BEN LEAVE Repeat No. 1 "Sally of My Dreams" 1 Min.

Musical notation for item 37, starting with a treble clef, a key signature of one flat, and a common time signature. The tempo marking is *mod^{to}*.

38 (Action) MOTHER SEES SALLY AND BERT Love Tragedy (Savino) 1 3/4 Min

And^{te}
 Musical notation for 'MOTHER SEES SALLY AND BERT' in G major, 2/4 time, starting with a forte dynamic. The melody is written on a single staff.
Copyright 1924 Robbins Music Corp.

39 (Action) MANAGER ENTERS SALLY'S DRESSING ROOM Repeat No. 18 "Chatter" 3/4 Min.

All^o
 Musical notation for 'MANAGER ENTERS SALLY'S DRESSING ROOM' in G major, 2/4 time, starting with an all-o tempo marking. The melody is written on a single staff.

40 (Action) CHANGE OF SCENE TO MOTHER IN BED.... Mother Croons a Tune (Copping) 1 Min.

And^{te} con Sentimento
 Musical notation for 'CHANGE OF SCENE TO MOTHER IN BED' in G major, 2/4 time, starting with an 'And^{te} con Sentimento' tempo marking. The melody is written on a single staff.
Copyright 1927 G. Schirmer.

41 (Action) SODA FOUNTAIN SEEN Repeat No. 1 "Sally of My Dreams" 1/2 Min.

mod^{to}
 Musical notation for 'SODA FOUNTAIN SEEN' in G major, 2/4 time, starting with a 'mod^{to}' tempo marking. The melody is written on a single staff.

42 (Action) MOTHER SEEN IN BED AGAIN Dilemma (Savino) 1 Min.

And^{te} assai mod^{to}
 Musical notation for 'MOTHER SEEN IN BED AGAIN' in G major, 2/4 time, starting with an 'And^{te} assai mod^{to}' tempo marking. The melody is written on a single staff.
Copyright 1925 Robbins Music Corp.

43 (Action) CHANGE OF SCENE BACK TO SODA FOUNTAIN Repeat No. 1 "Sally of My Dreams" 1 Min.

mod^{to}
 Musical notation for 'CHANGE OF SCENE BACK TO SODA FOUNTAIN' in G major, 2/4 time, starting with a 'mod^{to}' tempo marking. The melody is written on a single staff.

44 (Action) MOTHER SEEN IN BED AGAIN Repeat No. 42 "Dilemma" 1 Min.

And^{te} assai mod^{to}
 Musical notation for 'MOTHER SEEN IN BED AGAIN' in G major, 2/4 time, starting with an 'And^{te} assai mod^{to}' tempo marking. The melody is written on a single staff.

45 (Action) SALLY ENTERS DRESSING ROOM Repeat No. 34 "Sally of My Dreams" (Verse) 2 1/4 Min.

mod^{to}
 Musical notation for 'SALLY ENTERS DRESSING ROOM' in G major, 2/4 time, starting with a 'mod^{to}' tempo marking. The melody is written on a single staff.

46 (Action) MOTHER ENTERS SALLY'S DRESSING ROOM. Dramatic Finale (Noyes) 1 Min.

Maestoso
ff
 Musical notation for 'MOTHER ENTERS SALLY'S DRESSING ROOM. Dramatic Finale' in G major, 2/4 time, starting with a 'Maestoso' tempo marking and a fortissimo dynamic. The melody is written on a single staff.
Copyright 1923 Hawkes & Son

47 (Title) YOU HAD TO WAIT UNTIL Tears (Zamecnik) 3 3/4 Min.

mod^{to}
mf
 Musical notation for 'YOU HAD TO WAIT UNTIL' in G major, 2/4 time, starting with a 'mod^{to}' tempo marking and a mezzo-forte dynamic. The melody is written on a single staff.
Copyright 1917 Sam Fox

48 (Action) OCEAN LINER SEEN Repeat No. 1 "Sally of My Dreams" 1 Min.

mod^{to}
 Musical notation for 'OCEAN LINER SEEN' in G major, 2/4 time, starting with a 'mod^{to}' tempo marking. The melody is written on a single staff.

49 (Title) PARIS—AFTER A TRIUMPHAL Princess Enchanting (Hadley) 1 1/2 Min.

Very slow + Stately
 Musical notation for 'PARIS—AFTER A TRIUMPHAL' in G major, 2/4 time, starting with a 'Very slow + Stately' tempo marking. The melody is written on a single staff.
Copyright 1928 Edwin F. Kalmus.

50 (Title) TELL THE STAGE-DOOR L'Amour (Christine) 1/4 Min.

Two Step
ff
 Musical notation for 'TELL THE STAGE-DOOR' in G major, 2/4 time, starting with a 'Two Step' tempo marking and a fortissimo dynamic. The melody is written on a single staff.
Copyright 1913 E. B. Marks

51 (Action) SALLY ENTERS DRESSING ROOM Amorous Adventure (Bradford) 1 Min.

Musical notation for item 51: Treble clef, 2/4 time, key of B-flat major. Tempo marking: *Tranquillo*. Copyright: 1928 Sonnemann Music Co.

52 (Action) SALLY TAKES RING OFF HER FINGER..... Repeat No. 1 "Sally of My Dreams" 3/4 Min.

Musical notation for item 52: Treble clef, 3/4 time, key of B-flat major. Tempo marking: *Mod^{to}*.

53 (Action) CLOSE-UP OF MOBILIZATION ANNOUNCEMENT Robespierre Overture (Litolff) 1 Min.

Musical notation for item 53: Treble clef, 2/4 time, key of B-flat major. Tempo marking: *Tempo un poco ritato*. Copyright: 1919 Carl Fischer.

54 (Title) A WORLD AT WAR When Yankee Doodle Learns to Parlez Vous (Nelson)..... 3/4 Min.

Musical notation for item 54: Treble clef, 2/4 time, key of G major. Tempo marking: *Gratop*. Copyright: 1917 A. J. Stasny.

55 (Title) AMONG OTHER FAMOUS STAGE Play "Who Will Buy My Violets" (Harms) 3/4 Min.

NOTE: Play a la burlesque.

56 (Title) DO LAUDER—HARRY LAUDER Repeat No. 29 "For She's Ma Daisy" 3/4 Min.

NOTE: Play with Piano predominating—orchestra quietly.

57 (Action) GROUP OF SOLDIERS SEEN ON WAGON..... Repeat No. 54 "When Yankee Doodle Learns to Parlez Vous" 1/2 Min.

58 (Action) AFTER COLORED FELLOW SMOKES CIGARETTE Repeat No. 29 "For She's Ma Daisy" 1/4 Min.

59 (Action) SALLY LEAVES SOLDIERS AFTER IMPERSONATION Repeat No. 34 "Sally of My Dreams" (Verse)..... 2 1/4 Min.

60 (Action) CHANGE TO VIOLIN SOLO Repeat No. 1 "Sally of My Dreams" 1 1/4 Min.

NOTE: Start as Violin Solo in a different key, then orchestra continue on second half.

61 (Title) HERE COMES THE CHIEF OF POLICE! Hinky Dinky Parlav Voo (McHugh) 1/2 Min.

Musical notation for item 61: Treble clef, 6/8 time, key of G major. Tempo marking: *Mod^{to}*. Copyright: 1924 Jack McHugh.

62 (Action) CLOSE-UP OF LOVERS Repeat No. 1 "Sally of My Dreams" 1/2 Min.

Musical notation for item 62: Treble clef, 3/4 time, key of B-flat major. Tempo marking: *Mod^{to}*.

63 (Action) MOTHER WALKS OVER TO SALLY AND BERT Hell Hath No Fury (Carr) 1 1/4 Min.

Musical notation for item 63: Treble clef, 2/4 time, key of B-flat major. Tempo marking: *And^{te} con moto*. Copyright: E. B. Marks.

64 (Title) SHE'S RIGHT, SALLY Repeat No. 1 "Sally of My Dreams" 1/2 Min.

Musical notation for item 64: Treble clef, 3/4 time, key of B-flat major. Tempo marking: *Mod^{to}*.

65 (Action) CHANGE TO EXTERIOR—OFFICERS WAITING IN AUTOMOBILE FOR SALLY Yankee Rose (Frankl) 1 1/2 Min.

Musical notation for item 65: Treble clef, 2/4 time, key of G major. Tempo marking: *Mod^{to}*. Copyright: 1926 Irving Berlin.

66 (Action) SALLY PUTS COAT ON Second Love Tragedy (Savino) 2 3/4 Min.

Musical notation for item 66: Treble clef, 2/4 time, key of G major. Tempo marking: *Assai sostenuto*. Copyright: 1918 Robbins Music Corp.

67 (Action) FADE-OUT OF MOTHER Anelante (Gabriel Marie) 2 1/4 Min.

Musical notation for item 67: Treble clef, 2/4 time, key of G major. Tempo marking: *Agitato*. Copyright: 1918 Ricordi + Co.

NOTE: Drummer watch marching soldiers—drum beat.

68 (Action) CLOSE-UP OF BERT MARCHING WITH TROOPS Appassionato Patetico (Bradford) ¾ Min.

And^{te} con moto

Copyright 1924 Belwin Inc.

69 (Title) MORNING—AFTER A Recitativo Patetico (Peele) 1¼ Min.

And^{te} quasi recit

Copyright 1927 Belwin Inc.

70 (Title) ARMISTICE! Broadway Blues (Morgan) 1¼ Min.

Slow

Copyright 1920 Irving Berlin.

71 (Action) LITTLE GIRL SEEN Dainty Miss (Barnes) 1½ Min.

Mod^{to}

NOTE: Play syncopated.

Copyright 1927 Sherman, Clay Co.

72 (Action) SALLY EMBRACES BABY Mother's Lullaby (Rosenblatt) 1¼ Min.

And^{te} mod^{to}

Copyright 1928 Irving Berlin.

73 (Title) YOU'LL HAVE TO EXCUSE Repeat No. 71 "Dainty Miss" 1 Min.

Mod^{to}

74 (Action) BESSIE, BEN AND CHILDREN LEAVE Requitted Love (Rollinson) 1½ Min.

And^{te}

Copyright Oliver Ditson Co.

75 (Title) — AND MOTHER KNOWS BEST Afflizione (Gabriel Marie) 1½ Min.

Larghetto

Copyright 1918 G. Ricordi.

76 (Action) FADE-OUT OF SALLY AND MOTHER Nocturne (Krzyzanowski) 4¾ Min.

Molto lento

Copyright 1910 G. Schirmer.

77 (Action) MOTHER KNEELS AT SALLY'S BEDSIDE Sobbing (Baron) 2¼ Min.

All^o mod^{to}

Copyright 1927 Irving Berlin.

78 (Action) BERT APPEARS Midsummer Night's Serenade (Albeniz) 1¾ Min.

And^{no}

Copyright 1917 G. Schirmer.

79 (Action) SALLY SEES BERT Repeat No. 1 "Sally of My Dreams" 1 Min.

Mod^{to}

Printed in U. S. A.

THE END

Complete orchestrations and single piano parts of each separate number contained hereon, can be purchased from CAMEO MUSIC SERVICE CORPORATION, 315-317 WEST 47TH STREET, NEW YORK CITY.