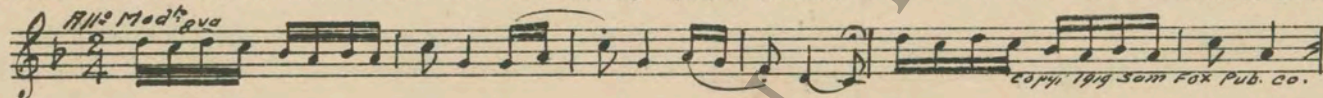


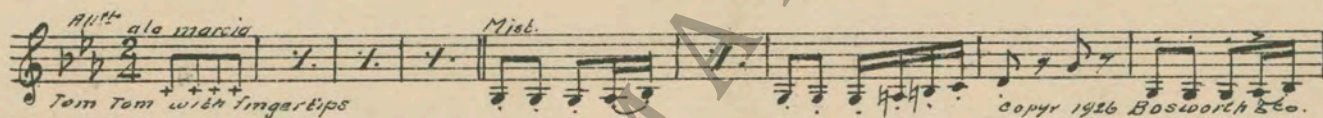
M. J. MINTZ (PATENT)
JULY 31, 1923.

First National Pictures, Inc.
presents
"NO PLACE TO GO"
with
MARY ASTOR and LLOYD HUGHES
From the Story "Isles of Romance"
by Richard Connell
Compiled by James C. Bradford
A First National Picture

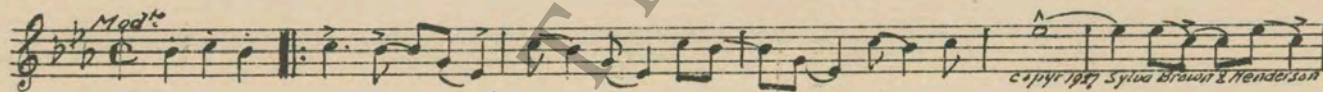
1 AT SCREENING Dancing Nymphs (Braine) 1 Min.



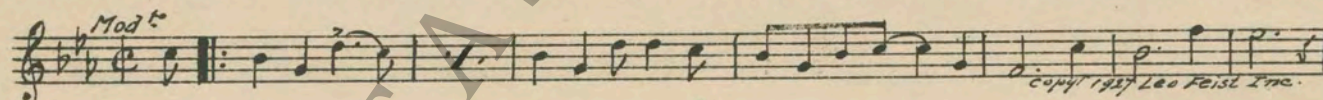
2 (Title) NIGHT IN THE JUNGLE Jungle Drums (Ketelbey) 1 1/4 Min.



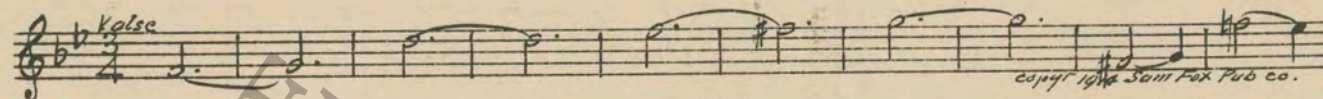
3 (Action) GIRL STARTS TO DANCE Nigger Heaven Blues (Oppenheimer) 3 1/4 Min.



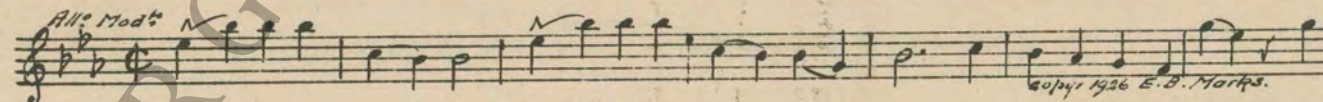
4 (Action) CURTAINS CLOSE IN Someday You'll Say 'O. K.' (Donaldson) 1 1/4 Min.



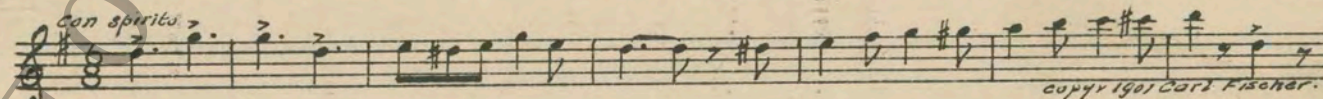
5 (Action) DANCERS STOP ON DANCE FLOOR Mon Plaisir (Roberts) 1 1/4 Min.



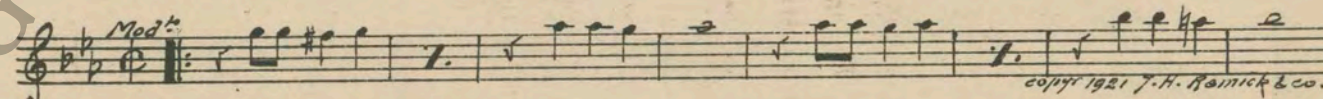
6 (Action) AMBROSE PLAYING BASS VIOLIN He Knows His Groceries (Breau) 3/4 Min.



7 (Title) IN DUE TIME Our Jackies (Laurendeau) 2 1/2 Min.



8 (Title) THE SOUTH SEA Ain't We Got Fun (Whiting) 1 1/4 Min.



NOTE: Play on Bass or imitate on Cello.

9 (Title) IT'S AFTER TWELVE Goodnight Ladies (Adams) ¾ Min.
Valse
 copyright 1914 Volkwein Bros.

10 (Action) AMBROSE STARTS TO PLAY BASS AGAIN... Sweet Adeline (Lake) ¾ Min.
Mod^{to}
 copyright 1920 Carl Fischer

NOTE: Play on Bass or imitate on Cello.
 11 (Action) HE STOPS PLAYING BASS Mosquito Parade (Cortelyou) 1 Min.
All^{to} grazioso
 copyright 1927 G. Schirmer & Co.

12 (Title) ONE O'CLOCK Second Misterioso a la Valse (Savino) ½ Min.
All^{to} Mod^{to}
 copyright 1925 Robbins music corp.

13 (Action) FLASH-BACK TO AMBROSE The Hobbledehoy (Olsen) 2¾ Min.
All^{to}
 copyright 1915 Hawkes & Son.

14 (Action) FLASH-BACK TO SALLY AND HAYDEN Repeat No. 12 "Second Misterioso a la Valse" ¾ Min.
All^{to} Mod^{to}

15 (Action) AMBROSE SMOKING Elopement (Carrozzini) 3½ Min.
Vivace
 copyright 1926 Sonnetmann music co.

16 (Title) I HOPE THERE'LL BE AN OSTEOPATH Impression Dramatique (Bradford) 2 Min.
All^{to} Agitato
 copyright Robbins music corp.

17 (Title) THE NEXT MORNING Love In Arcady (Wood) 1½ Min.
All^{to}
 copyright 1913 Hawkes & Son.

18 (Action) SALLY STARTS PHONOGRAPH Sa-Lu-Ta (Donaldson) 2½ Min.
All^{to} Mod^{to}
 copyright 1927 Leo Feist, Inc.

19 (Title) HAYDEN, DON'T YOU FEEL ROMANTIC? ... Repeat No. 5 "Mon Plaisir" 1 Min.
Valse

20 (Action) FLASH TO YACHT Scherzando Hurry (Frey) 1¼ Min.
Scherzando
 copyright 1915 Robbins music corp.

21 (Title) BREAKFAST THE ZERO HOUR Chatter (Kahn) 1¼ Min.
All^{to}
 copyright 1926 Sonnetmann music co.

22 (Action) IT STARTS TO RAIN Oh, Didn't It Rain (Leonard) 1½ Min.

Musical notation for "Oh, Didn't It Rain" in G major, 2/4 time, marked *Mod^{to}*. Copyright 1924 Edw. B. Marks, Co.

23 (Title) THE ONLY THING MORE CAPRICIOUS..... Repeat No. 5 "Mon Plaisir" 1 Min.

Musical notation for "Mon Plaisir" in G major, 3/4 time, marked *Valse*.

24 (Action) UNCLE AND MOTHER Gossip (Borch) ½ Min.

Musical notation for "Gossip" in G major, 2/4 time, marked *All^o*. Copyright 1920 Belwin Inc.

25 (Action) FLASH-BACK TO SALLY AND HAYDEN..... Repeat No. 5 "Mon Plaisir" ½ Min.

Musical notation for "Mon Plaisir" in G major, 3/4 time, marked *Valse*.

26 (Title) YOU NEVER KNOW WHAT'S OVER THE HILL Repeat No. 2 "Jungle Drums" 4 Min.

Musical notation for "Jungle Drums" in G major, 2/4 time, marked *All^o a la marcia*.

27 (Action) TWO CANNIBALS APPEAR AT SALLY'S SIDE A Cannibal Carnival (Levy) 3¼ Min.

Musical notation for "A Cannibal Carnival" in G major, 2/4 time, marked *All^o Mod^{to}*. Copyright 1920 Belwin Inc.

28 (Title) SO SORRY WE MUST BE GOING Fourteen Fathoms Deep (Lake) ¾ Min.

Musical notation for "Fourteen Fathoms Deep" in G major, 2/4 time, marked *Mod^{to}*. Copyright Carl Fischer.

29 (Action) VISION OF DANCE Repeat No. 3 "Nigger Heaven Blues" 2¼ Min.

Musical notation for "Nigger Heaven Blues" in G major, 2/4 time, marked *Mod^{to}*.

30 (Action) THEY ESCAPE FROM DANCING NATIVES... Dramatic Hurry No. 1 (Baron) 1¼ Min.

Musical notation for "Dramatic Hurry No. 1" in G major, 2/4 time, marked *All^o molto*. Copyright 1921 M. Baron.

31 (Action) YACHT APPEARS Pandora (St. Clair) 1½ Min.

Musical notation for "Pandora" in G major, 3/4 time, marked *Marcia*. Copyright 1927 Sam Fox, Pub. Co.

32 (Title) THERE'S ONLY ONE WAY Butterfly (Densmore) ¾ Min.

Musical notation for "Butterfly" in G major, 2/4 time, marked *All^o*. Copyright 1916 G. Schirmer.

33 (Title) SO MRS. MONTGOMERY Bridal Chorus (Wagner) 1 Min.

Musical notation for "Bridal Chorus" in G major, 2/4 time, marked *Mod^{to}*. Copyright 1911 Emil Fischer.

34 (Action) TWO JAPANESE SERVANTS STANDING AT ATTENTION Rendez-vous (Aletter) 3¼ Min.

Musical notation for "Rendez-vous" in G major, 2/4 time, marked *Gavotte*. Copyright 1894 Bosworth & Co.

35 (Title) THAT'S FINE, NOW SEE THAT YOU STAY... Lazy Bones (Edwards) ½ Min.

Musical notation for "THAT'S FINE, NOW SEE THAT YOU STAY... Lazy Bones (Edwards)". Tempo: *Molto Mod^o*. Copyright 1937 Robbins Music Corp.

36 (Action) HAYDEN PUTS ON RECORD—STARTS MACHINE I Wonder What's Become of Sally? (Ager) 2¼ Min.

Musical notation for "HAYDEN PUTS ON RECORD—STARTS MACHINE". Tempo: *Valse*. Copyright 1924 Ager Yellan Bernstein Inc.

37 (Title) THE NEXT MORNING Hello Baby (Whiting) 1½ Min.

Musical notation for "THE NEXT MORNING". Tempo: *Mod^o*. NOTE: Thump Piano with both hands against phonograph. Copyright 1926 J. N. Kemick & Co.

38 (Action) TELEPHONE RINGS The Woodland Flirt (Ring-Hager) 1 Min.

Musical notation for "TELEPHONE RINGS". Tempo: *Mod^o Assai*. Copyright 1922 Belwin Inc.

39 (Action) PHONE RINGS SECOND TIME—CHINAMAN ON WIRE Otaki (Bereny) 1¾ Min.

Musical notation for "PHONE RINGS SECOND TIME—CHINAMAN ON WIRE". Tempo: *Mod^o*. Copyright Jos. W. Stern

40 (Title) AT MIDNIGHT Twelve O'Clock At Night (Handman) 2¼ Min.

Musical notation for "AT MIDNIGHT". Tempo: *Mod^o*. Copyright 1923 Ager Yellan & Bernstein Inc.

41 (Action) HAYDEN GRABS SALLY BY ARM Symphonic Incidentals No. 5 (Marquardt) 1 Min.

Musical notation for "HAYDEN GRABS SALLY BY ARM". Tempo: *Presto*. Copyright 1927 Music Buyers Corp.

42 (Title) I WISH THAT WERE TRUE Broken Hearted (Henderson) 2¾ Min.

Musical notation for "I WISH THAT WERE TRUE". Tempo: *Mod^o*. Copyright 1927 De Sylva Brown & Henderson

43 (Title) SALLY'S DREAM OF ROMANCE Repeat No. 2 "Jungle Drums" 1½ Min.

Musical notation for "SALLY'S DREAM OF ROMANCE". Tempo: *All^o al la marcia*

44 (Action) SALLY RUSHES FROM BEDROOM March Burlesque (Gillet) 2 Min.

Musical notation for "SALLY RUSHES FROM BEDROOM". Tempo: *Marcia*. NOTE: Tom-Tom ad lib throughout sequence. Copyright Enoch & Co.

45 (Action) INSERT—THE ROBINSON CRUSOE ROOF.... Cute and Cunnin' (Kempinski) ¾ Min.

Musical notation for "INSERT—THE ROBINSON CRUSOE ROOF....". Tempo: *All^o*. Copyright 1927 Erving Berlin Inc.

46 (Title) SALLY, WHAT DO YOU SEE Repeat No. 5 "Mon Plaisir" 1¼ Min.

Musical notation for "SALLY, WHAT DO YOU SEE". Tempo: *Valse*

THE END

Printed in U. S. A.

Complete orchestrations and single piano parts of each separate number contained hereon, can be purchased from CAMEO MUSIC SERVICE CORPORATION, 315-317 WEST 47TH STREET, NEW YORK CITY.