

M. J. MINTZ (PATENT)  
JULY 31, 1923.

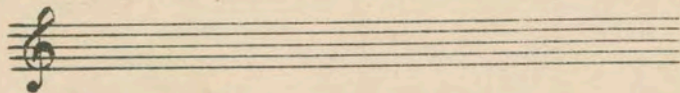
John McCormick  
presents

# COLLEEN MOORE

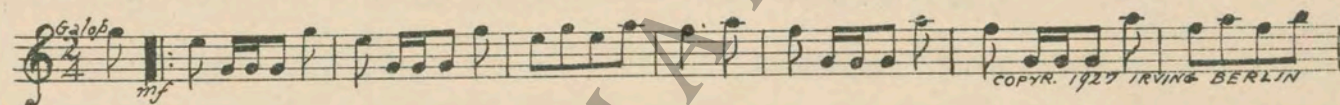
in  
"OH KAY"

with  
Laurence Gray, Alan Hale  
Ford Sterling and Claude Dillingwater  
Directed by Marvyn LeRoy  
Compiled by Eugene Conte  
A First National Picture

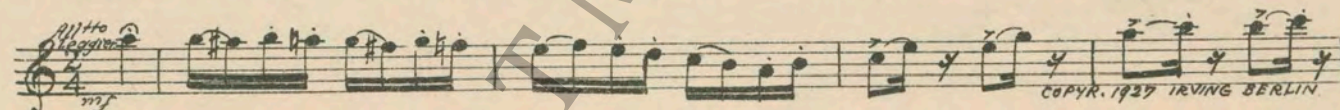
- 1 AT SCREENING ..... Play "Oh Kay" (Gershwin) (Harms)..... ¼ Min.



- 2 (Title) IT WAS TAG DAY ..... Down the Stretch (Balfmoor)..... ½ Min.



- 3 (Title) RUTFIELD HALL ..... Cute and Cunnin' (Kempinski)..... 1¼ Min.



- 4 (Title) MR. BRAGOTT WHO IS MY ..... Ripples (Lowitz) ..... 1¾ Min.



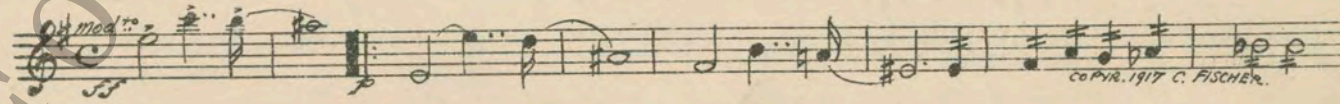
- 5 (Action) LADY KAY LEAVES HOUSE ..... En Mer (Holmes)..... ½ Min.



- 6 (Title) THE SEA HAD BEGUN ..... Storm Music (Ketelbey)..... 1¾ Min.



- 7 (Title) LUCKY FOR KAY ..... Fourteen Fathoms Deep (Lake)..... 2¼ Min.



- 8 (Title) DESTINATION ..... Heave Ho (Copping)..... 2 Min.



9 (Action) MATE LEAVES LADY KAY..... Characteristic No. 1 (Roberts).....2¼ Min.

Musical notation for item 9: Treble clef, 2/4 time, *All<sup>ro</sup>* tempo, *mf* dynamics. Copyright 1918, BELWIN, INC.

10 (Title) YOU LOOK DUMB..... Two in a Bar (Copping).....3¼ Min.

Musical notation for item 10: Treble clef, 2/8 time, *rembo di Teco* tempo, *mf* dynamics. Copyright 1928 G. SCHIRMER

11 (Title) OFF LONG ISLAND..... Third Misterioso a la Valse (Savino).....1 Min.

Musical notation for item 11: Treble clef, 3/4 time, *All<sup>ro</sup> mod<sup>to</sup>* tempo, *pp* dynamics. Copyright 1928 ROBBINS MUSIC CO

12 (Action) LADY KAY IN BATHING SUIT..... Grotesque Comedy (Zamecnik).....1¾ Min.

Musical notation for item 12: Treble clef, 8/8 time, *mod<sup>to</sup>* tempo, *mf* dynamics, *gl<sup>ow</sup>er* marking. Copyright 1928 SAM FOX PUB. CO

13 (Title) THE FIRST HOUSE ON THE RIGHT..... Hidden Perils (Varnier).....1¾ Min.

Musical notation for item 13: Treble clef, 2/4 time, *Allo Agitato* tempo, *p* dynamics, *gl<sup>ow</sup>er* marking. Copyright 1928 EMIL ASCHER

14 (Title) YOU MAY RETURN TO TOWN..... Repeat No. 12 "Grotesque Comedy".....1½ Min.

Musical notation for item 14: Treble clef, 8/8 time, *mod<sup>to</sup>* tempo.

15 (Title) KAY FOUND AMERICA..... Distress (Breil) .....1¾ Min.

Musical notation for item 15: Treble clef, 2/4 time, *molto mod<sup>to</sup>* tempo, *ff* dynamics. Copyright 1926 SONNEMANN CO

16 (Action) FADE TO INTERIOR OF HOUSE..... Prelude to "Parlor Comedy" (Baron).....1 Min.

Musical notation for item 16: Treble clef, 2/4 time, *All<sup>ro</sup> Giocoso* tempo, *mf* dynamics. Copyright 1924 IRVING BERLIN

17 (Action) EXTERIOR OF HOUSE..... Omens (Schad) .....3 Min.

Musical notation for item 17: Treble clef, 2/4 time, *All<sup>ro</sup>* tempo. Copyright 1925 G. SCHIRMER

18 (Action) REVENUE OFFICER LEAVES JIMMIE AND LADY KAY..... Cheero (Finck) .....1¼ Min.

Musical notation for item 18: Treble clef, 2/4 time, *All<sup>ro</sup>* tempo. Copyright 1915 HAWKES

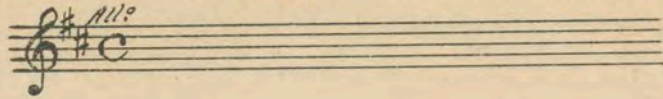
19 (Action) REVENUE OFFICER ENTERS..... Play "Fidgety Feet" from Oh Kay (Harms).....1½ Min.  
20 (Action) REVENUE OFFICER LEAVES AGAIN..... Gigue (Bradford) .....1 Min.

Musical notation for items 19 and 20: Treble clef, 6/8 time, *Vivace* tempo. Copyright 1927 ROBBINS MUSIC CO

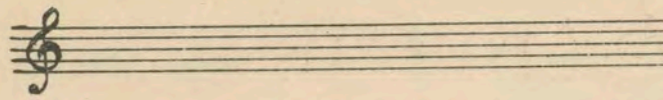
21 (Title) AFTER A HARD NIGHT..... The Mischief Makers (Carbonara).....1½ Min.

Musical notation for item 21: Treble clef, 6/8 time, *con Brio* tempo, *mf* dynamics. Copyright 1926 ROBBINS MUSIC

- 22 (Action) JIMMIE STARTS TO CALL ACROSS ROOM.... Play "Do-Do-Do" from Oh Kay (Harms).....1 Min.  
 23 (Action) REVENUE OFFICER ENTERS..... Repeat No. 17 "Omens".....1 Min.



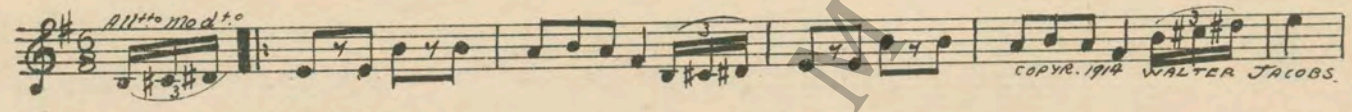
- 24 (Action) LADY KAY ENTERS..... Repeat No. 19 "Fidgety Feet".....1 1/4 Min.



- 25 (Title) WHERE DID YOU GET THAT DRESS?..... Frivolities (Carbonara) .....1 1/4 Min.



- 26 (Action) AUTO SCENE ..... Potato Bug Parade (Cobb).....2 1/2 Min.



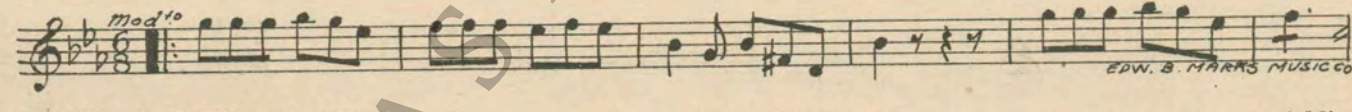
- 27 (Title) WHAT ARE YOU MANIACS..... The Jesters (Carbonara).....1 1/2 Min.



- 28 (Action) CONSTANCE ENTERS ..... Caprice (Somerville) .....1 Min

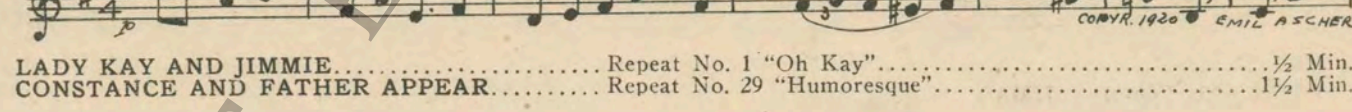


- 29 (Action) CLOSE-UP OF DOOR KNOB..... Humoresque (Mikulicz) .....3/4 Min.



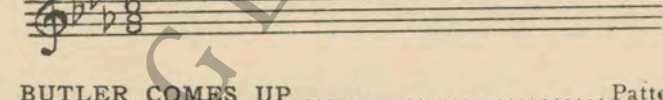
- 30 (Action) JIMMIE AND CONSTANCE LEAVE..... Repeat No. 1 "Oh Kay".....3/4 Min.

- 31 (Action) EXTERIOR SCENE ..... Tell Me Pretty Maiden (Stuart).....1 Min.



- 32 (Action) LADY KAY AND JIMMIE..... Repeat No. 1 "Oh Kay".....1/2 Min.

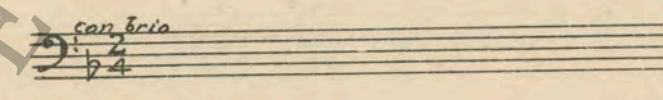
- 33 (Action) CONSTANCE AND FATHER APPEAR..... Repeat No. 29 "Humoresque".....1 1/2 Min.



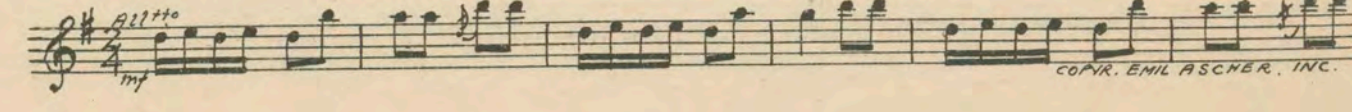
- 34 (Action) BUTLER COMES UP..... Pattering Feet (Dreier).....1 3/4 Min.



- 35 (Action) REVENUE OFFICER APPEARS..... Repeat No. 27 "The Jesters".....1 3/4 Min.



- 36 (Action) EXTERIOR SCENE ..... Paragraphs (Fall) .....1 Min.



37 (Action) JIMMIE AND LADY KAY ALONE..... A Game of Tag (Trinkaus).....2 Min.

Musical notation for 'A Game of Tag' in G major, 3/8 time. The piece is marked 'All<sup>o</sup> mf' and includes a 'rit' (ritardando) section. Copyright 1911 M. Witmark & Sons.

38 (Title) SHE'S IMPOSSIBLE ..... Repeat No. 27 "The Jesters".....1¼ Min.

Musical notation for 'The Jesters' in B-flat major, 2/4 time. The piece is marked 'con trio'.

39 (Action) CONSTANCE EATING SOUP..... Essence Grotesque (Lake).....3 Min.

Musical notation for 'Essence Grotesque' in G major, 3/8 time. The piece is marked 'And<sup>o</sup> p' and includes a 'rit' section. Copyright 1916 Carl Fischer.

SEGUE ..... A Ticklish Tale (Finck)

Musical notation for 'A Ticklish Tale' in B-flat major, 2/4 time. The piece is marked 'not too fast mf'. Copyright 1927 Hawkes & Son.

40 (Title) WE'VE HAD ENOUGH OF THIS..... Repeat No. 27 "The Jesters".....2 Min.

Musical notation for 'The Jesters' in B-flat major, 2/4 time. The piece is marked 'con trio'.

41 (Action) EXTERIOR SCENE ..... Wedding Blues (Friml).....1 Min.

Musical notation for 'Wedding Blues' in G major, 2/4 time. The piece is marked 'Tanto giusto mf-f'. Copyright 1919 G. Schirmer.

42 (Action) BRIDAL PROCESSION ..... Bridal Chorus from "Lohengrin" (Wagner).....½ Min.

Musical notation for 'Bridal Chorus from "Lohengrin"' in B-flat major, 4/4 time. The piece is marked 'con moto mod<sup>to</sup> p'. Copyright 1911 Emil Ascher.

43 (Action) INTERIOR—BUTLER AND KAY..... Carnival Grotesque (Savino).....1½ Min.

Musical notation for 'Carnival Grotesque' in G major, 12/8 time. The piece is marked 'Allo mod<sup>to</sup>'. Copyright 1928 G. Schirmer.

44 (Title) JIMMIE, YOU'VE DECEIVED US..... Repeat No. 17 "Omens".....2½ Min.

Musical notation for 'Omens' in G major, common time. The piece is marked 'Allo'.

45 (Title) RELAX FOLKS—THE PATROL..... A Gay Lothario (Bierman).....2 Min.

Musical notation for 'A Gay Lothario' in B-flat major, 2/4 time. The piece is marked 'mod<sup>to</sup> k con grazioso, tr'. Copyright 1927 American Composers Inc.

46 (Title) I'M NOT A REVENUE OFFICER..... Marche Mignone (Poldini).....2¼ Min.

Musical notation for 'Marche Mignone' in G major, 2/4 time. The piece is marked 'Leggiero'. Copyright 1920 G. Schirmer.

47 (Title) MAY I USE YOUR TELEPHONE?..... Repeat No. 1 "Oh Kay".....¾ Min.

THE END

Printed in U. S. A.

Complete orchestrations and single piano parts of each separate number contained hereon, can be purchased from CAMEO MUSIC SERVICE CORPORATION, 315-317 WEST 47TH STREET, NEW YORK CITY.