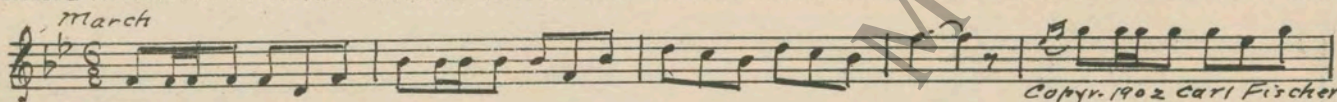


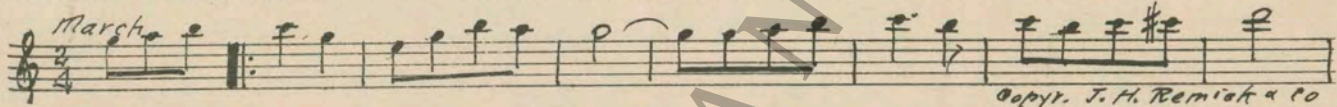
M. J. MINTZ (PATENT)  
JULY 31, 1923.

RICHARD A. ROWLAND  
presents  
**RICHARD BARTHELMESS**  
in  
**"OUT OF THE RUINS"**  
A JOHN FRANCIS DILLON PRODUCTION  
Compiled by James C. Bradford  
**A FIRST NATIONAL PICTURE**

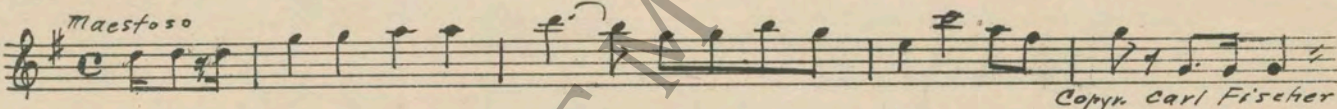
1 AT SCREENING ..... March Lorraine (Ganne) ..... 1 Min.



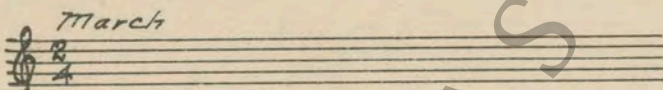
2 (Action) RAILROAD PLATFORM ..... Madelon (Robert) ..... ¾ Min.



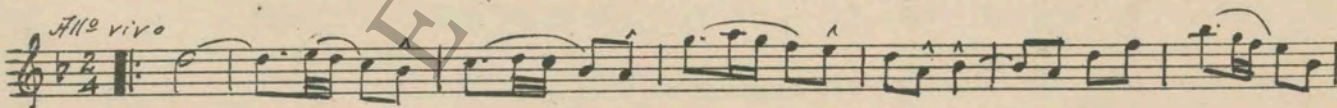
3 (Title) I AM GOING TO ..... La Marsellaise (French) ..... ¾ Min.



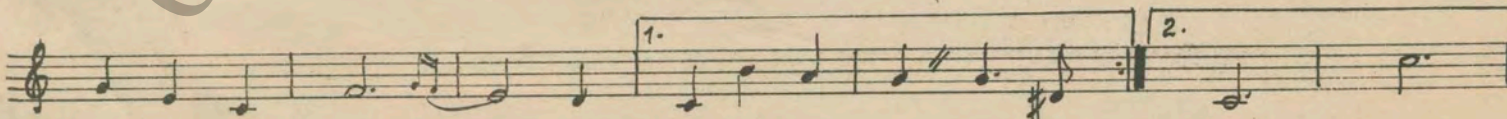
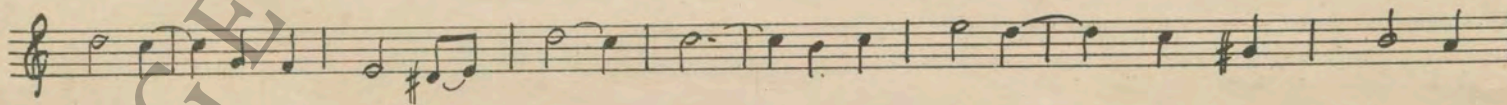
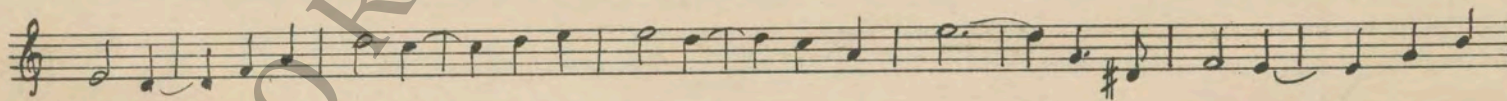
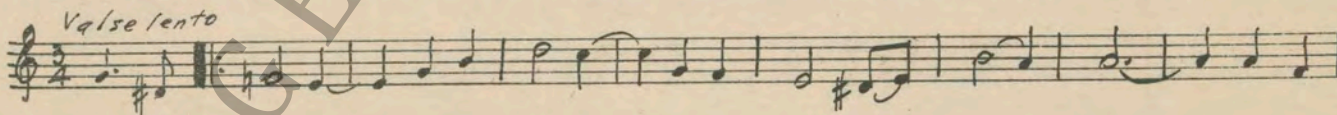
4 (Title) YOU MUST HAVE A SWEETHEART ..... Repeat No. 2 "Madelon" ..... ½ Min.



5 (Title) HOSPITALS—BANDAGES ..... La Guapa (Buisson) ..... 1¼ Min.



6 (Action) PIERRE ENTERS CAFE ..... THEMÈ: Douce Fievre (Y'ener) ..... ½ Min.



7 (Action) PIERRE WALKS FROM DOORWAY .....Hinky Dinky (McHugh) .....1 Min.

Musical notation for item 7, featuring a treble clef, a key signature of one sharp (F#), and a 2/4 time signature. The tempo marking is *Moderato*. The melody consists of eighth and quarter notes. Copyright: 1924 Jack Mills.

8 (Title) WHO'S THAT GORGEOUS .....Madame Toujours (Hampson) .....3¼ Min.

Musical notation for item 8, featuring a treble clef, a key signature of one sharp (F#), and a 2/4 time signature. The tempo marking is *Allato*. The melody consists of quarter and eighth notes. Copyright: 1920 Hawker & Son.

9 (Title) NOW I KNOW WHAT .....Repeat Theme No. 6 .....1¼ Min.

Musical notation for item 9, featuring a treble clef, a key signature of one sharp (F#), and a 3/4 time signature. The tempo marking is *Valse lento*. The notation shows a few notes on a five-line staff.

10 (Title) IN THE HOME OF .....Lamento (Berge) .....1 Min.

Musical notation for item 10, featuring a bass clef, a key signature of one sharp (F#), and a 2/4 time signature. The tempo marking is *Adagio*. The melody consists of quarter and eighth notes. Copyright: 1928 Robbins Music Co.

11 (Action) FLASH-BACK TO YVONNE AND PIERRE ... Repeat Theme No. 6 .....1½ Min.

Musical notation for item 11, featuring a treble clef, a key signature of one sharp (F#), and a 3/4 time signature. The tempo marking is *Valse lento*. The notation shows a few notes on a five-line staff.

12 (Action) GUESTS BECOME EXCITED .....La Rixe (Andrieu) .....1¼ Min.

Musical notation for item 12, featuring a treble clef, a key signature of one sharp (F#), and a 2/4 time signature. The tempo marking is *Allo*. The melody consists of quarter and eighth notes. Copyright: 1924 Andrieu.

13 (Title) NOTE: Air-plane motor effects and explosions ad lib. GLORIOUS DAYS OF YOUTH .....Patrouille Francaise (Hosmer) .....1¾ Min.

Musical notation for item 13, featuring a treble clef, a key signature of one sharp (F#), and a 2/4 time signature. The tempo marking is *Animato*. The melody consists of quarter and eighth notes. Copyright: 1917 Cundy-Betton Co.

14 (Action) PAUL LEAVES PARENTS .....Lament (Bierman) .....¾ Min.

Musical notation for item 14, featuring a treble clef, a key signature of one sharp (F#), and a 3/4 time signature. The tempo marking is *Andte doloroso*. The melody consists of quarter and eighth notes. Copyright: 1927 American Composers.

15 (Action) HENRI ENTERS ROOM .....Chatter (Kahn) .....1 Min.

Musical notation for item 15, featuring a treble clef, a key signature of one sharp (F#), and a 2/4 time signature. The tempo marking is *Allo*. The melody consists of quarter and eighth notes. Copyright: 1926 Sonnemann Music.

16 (Action) YVONNE AND PIERRE IN DOORWAY .....Repeat Theme No. 6 .....2½ Min.

Musical notation for item 16, featuring a treble clef, a key signature of one sharp (F#), and a 3/4 time signature. The tempo marking is *Valse lento*. The notation shows a few notes on a five-line staff.

17 (Action) NOTE: Play "PP" con sordini, strings only—very plaintive. HENRI LEAVES ROOM .....An Argument (Breil) .....½ Min.

Musical notation for item 17, featuring a treble clef, a key signature of one sharp (F#), and a 2/4 time signature. The tempo marking is *Agitato*. The melody consists of quarter and eighth notes. Copyright: 1924 Sonnemann M.W.

18 (Title) MERCILESS WEEKS OF .....Prelude (Chopin) .....1 Min.

Musical notation for item 18, featuring a treble clef, a key signature of one sharp (F#), and a 2/4 time signature. The tempo marking is *Tarso*. The melody consists of quarter and eighth notes. Copyright: 1919 G. Schirmer.

NOTE: Exploding shells and whistling effects ad lib.

19 (Title) WHILE AT HOME ..... Evil Intentions (Kempinski) ..... 2½ Min.

Musical notation for 'WHILE AT HOME' in treble clef, 4/4 time, marked *Mod<sup>to</sup>*. Copyright 1927 Irving Berlin.

20 (Action) YVONNE ALONE AT TABLE ..... Patrie (Bizet) ..... 1½ Min.

Musical notation for 'YVONNE ALONE AT TABLE' in bass clef, 3/4 time, marked *And<sup>te</sup> molto*. Copyright 1919 Carl Fischer.

21 (Action) PIERRE READING LETTER ..... Reproach (Zamecnik) ..... 3 Min.

Musical notation for 'PIERRE READING LETTER' in bass clef, 3/4 time, marked *Mod<sup>to</sup>*. Copyright 1927 Sam Fox.

22 (Action) PIERRE LEAVES OFFICER ..... An Argument (Breil) ..... 2 Min.

Musical notation for 'PIERRE LEAVES OFFICER' in treble clef, 4/4 time, marked *Mod<sup>to</sup>*. Copyright 1924 Sonnemann Mus. Co.

23 (Title) WHAT'S THE DIFFERENCE ..... Repeat Theme No. 6 ..... ¾ Min.  
NOTE: Produce effect of pop shots ad lib from German trench.

Musical notation for 'WHAT'S THE DIFFERENCE' in treble clef, 3/4 time, marked *Valse lento*.

24 (Action) COMMANDER ENTERS ..... Indecision (Snoek) ..... 1 Min.

Musical notation for 'COMMANDER ENTERS' in treble clef, 4/4 time, marked *And<sup>te</sup> sost.*. Manus Music Co.

25 (Title) BUT LOVE WAS STRONGER ..... Passionato (Borch) ..... 2¼ Min.

Musical notation for 'BUT LOVE WAS STRONGER' in treble clef, 3/4 time, marked *And<sup>te</sup>*. Copyright 1922 Hawkes & Son.

26 (Action) COMMANDER TELEPHONING ..... March Scenes Pittoresque (Massenet) ..... ½ Min.

Musical notation for 'COMMANDER TELEPHONING' in treble clef, 4/4 time, marked *Allo*. Copyright 1907 Carl Fischer.

27 (Action) YVONNE AND WOMAN ..... Misterioso Patetico (Brunelli) ..... ½ Min.

Musical notation for 'YVONNE AND WOMAN' in treble clef, 4/4 time, marked *Mod<sup>to</sup>*. Copyright 1928 Robbins Music Corp.

28 (Action) YVONNE AND PIERRE MEET ..... Repeat Theme No. 6 ..... ¾ Min.

Musical notation for 'YVONNE AND PIERRE MEET' in treble clef, 3/4 time, marked *Valse lento*.

29 (Action) OFFICERS APPEAR ON STREET ..... March of the Phantom Hosts (Axt) ..... 2½ Min.

Musical notation for 'OFFICERS APPEAR ON STREET' in treble clef, 4/4 time, marked *Moroso mod<sup>to</sup>*. Copyright 1927 Robbins Music Corp.

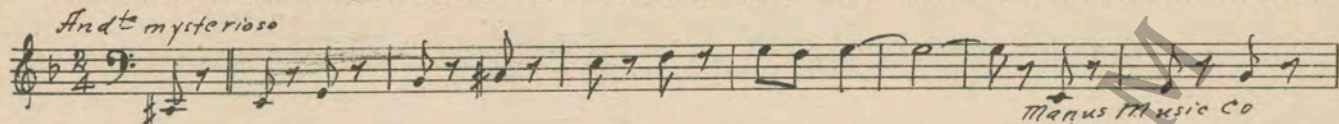
30 (Title) IT WAS THE ONLY WAY ..... Chant D'Amour (Frommel) ..... 2 Min.

Musical notation for 'IT WAS THE ONLY WAY' in treble clef, 4/4 time, marked *Appassionato*. Copyright 1921 Belwin Inc.

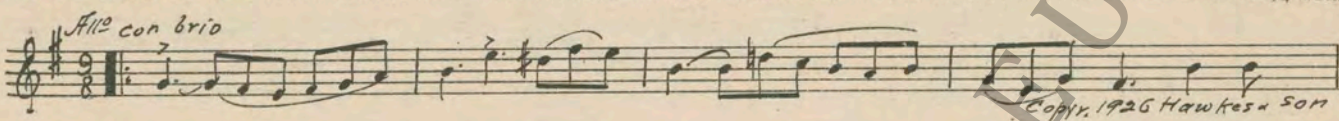
31 (Title) A FEW HAPPY HOURS ..... Repeat Theme No. 6 ..... 2¾ Min.

Musical notation for 'A FEW HAPPY HOURS' in treble clef, 3/4 time, marked *Valse lento*.

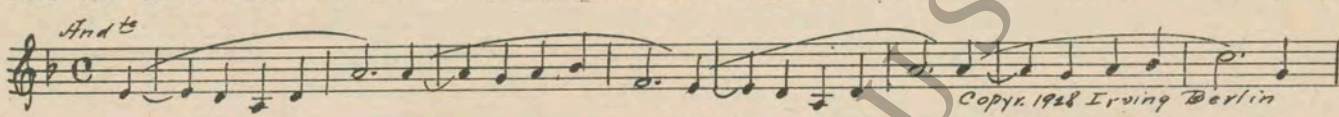
37 (Action) WOUNDED MARCHING PAST .....Tenebres (Ourdine) .....1¼ Min.

*And<sup>te</sup> misterioso*  
  
Manus Music Co

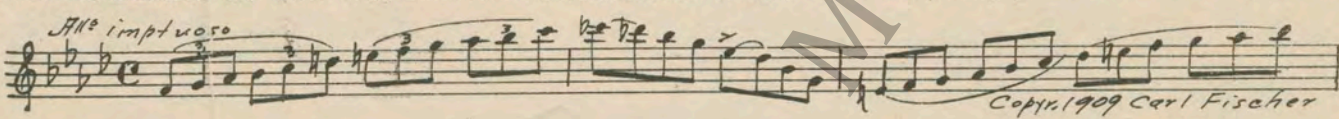
33 (Title) GOD FORGIVE ME .....Appassionato (Clutsam) .....1¾ Min.

*All<sup>o</sup> con brio*  
  
Copyr. 1926 Hawkes & Son

34 (Title) YOU CAN STAY HERE .....Heartaches (Pasternack) .....1¾ Min.

*And<sup>te</sup>*  
  
Copyr. 1928 Irving Berlin

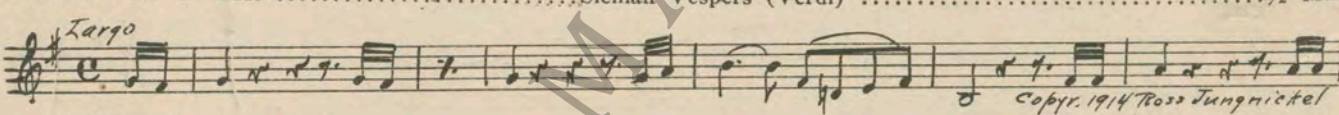
35 (Action) PIERRE STARTS TO RUN .....Robespierre (Litoff) .....3½ Min.

*All<sup>o</sup> impetuoso*  
  
Copyr. 1909 Carl Fischer

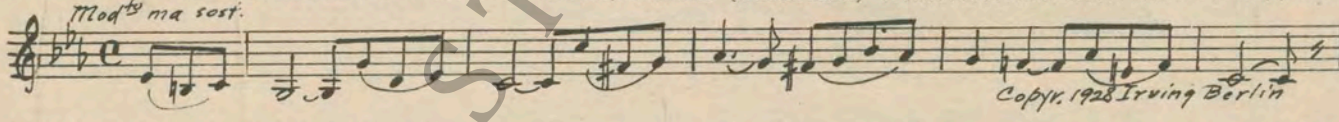
36 (Action) PIERRE MARCHING WITH SQUAD .....Lamento "Pique Dame" (Tschaikowsky) .....¾ Min.

*And<sup>te</sup>*  
  
Copyr. 1926 Manus Music Co

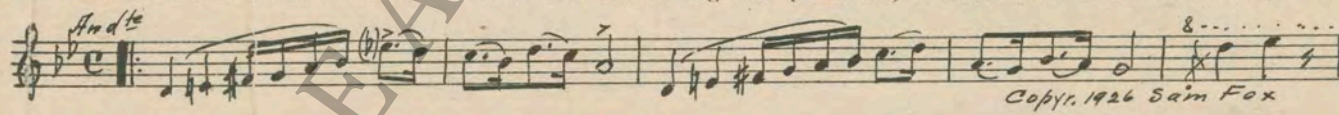
37 (Action) YVONNE IN CHAIR .....Sicilian Vespers (Verdi) .....½ Min.

*Targo*  
  
Copyr. 1914 Ross Jungnickel

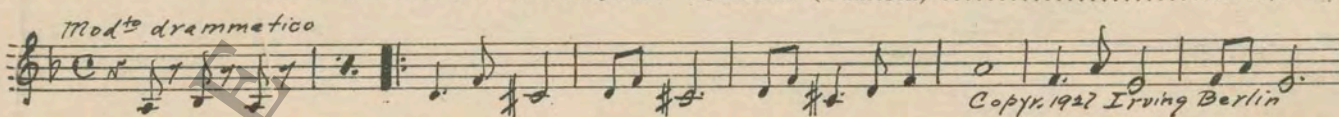
38 (Title) WITH NATIONS EXHAUSTED .....Implorations (Pasternack) .....3¾ Min.  
NOTE: Play first movement only.

*Mod<sup>to</sup> ma sost.*  
  
Copyr. 1928 Irving Berlin

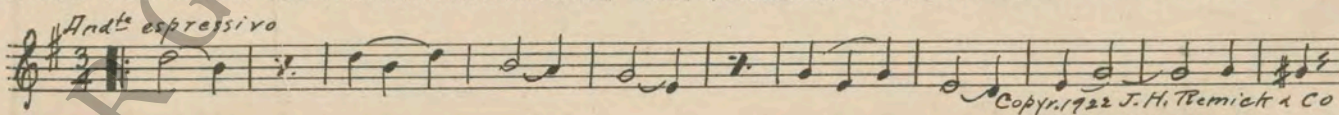
39 (Action) YVONNE LOOKS FROM WINDOW .....Chanson Algerian (Bradford) .....2½ Min.

*And<sup>te</sup>*  
  
Copyr. 1926 Sam Fox

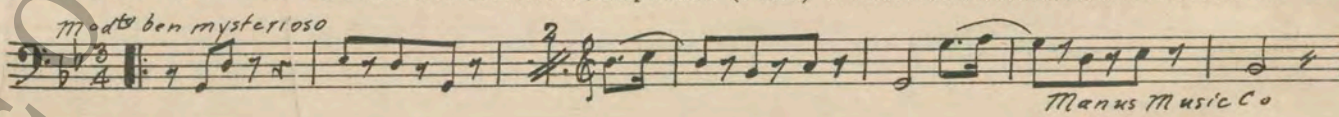
40 (Action) DARK STREET—PIERRE WALKING .....Rhythmic Mysterioso (Damesek) .....2½ Min.

*Mod<sup>to</sup> drammatico*  
  
Copyr. 1927 Irving Berlin

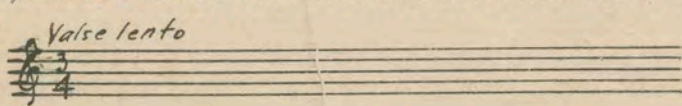
41 (Title) DON'T YOU KNOW ME .....My Buddy (Donaldson) .....3 Min.

*And<sup>te</sup> espressivo*  
  
Copyr. 1922 J. H. Remick & Co

42 (Title) THAT MUST BE YVONNE .....Conspiration (Fosse) .....1½ Min.

*Mod<sup>to</sup> ben misterioso*  
  
Manus Music Co

43 (Title) PIERRE'S ALIVE .....Repeat Theme No. 6 .....1 Min.

*Valse lento*  


Printer in U. S. A.

THE END

Complete orchestration and single piano parts of each separate number contained hereon, can be purchased from CAMEO MUSIC SERVICE CORPORATION, 315-317 WEST 47TH STREET, NEW YORK CITY.