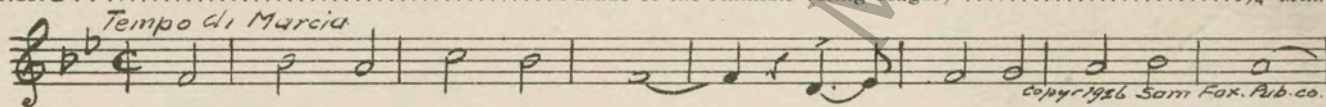


M. J. MINTZ (PATENT)  
JULY 31, 1923.

Joseph P. Kennedy  
presents  
**RED GRANGE**  
(Under the management of C. C. Pyle)  
in  
**"THE RACING ROMEO"**  
From the story by Byron Morgan  
A Sam Wood Production  
Compiled by James C. Bradford  
Distributed by  
F B O Pictures Corporation

- 1 AT SCREENING ..... Parade of the Animals (Ring-Hager) ..... 1¼ Min.

*Tempo di Marcia*



Copyright 1926 Sam Fox Pub. Co.

- 2 (Title) POUGHKEEPSIE — ITS BOAT RACES ..... Aeroplane Galop (Lamothe) ..... 1½ Min.

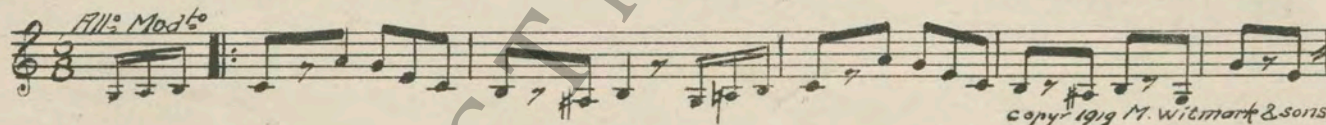
*Galop*



Copyright 1925 Howlitz & Son.

- 3 (Title) RED WALDON ..... The Mosquito's Parade (Whitney) ..... ½ Min.

*All. Mod.º*



Copyright 1919 M. Witmark & Sons.

- 4 (Action) CROWD START TO JEER ..... Tramp, Tramp, Tramp (Seredy) ..... ¾ Min.

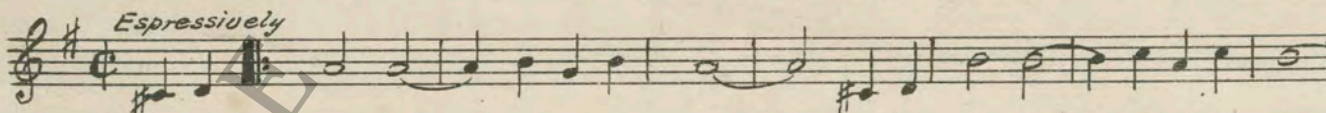
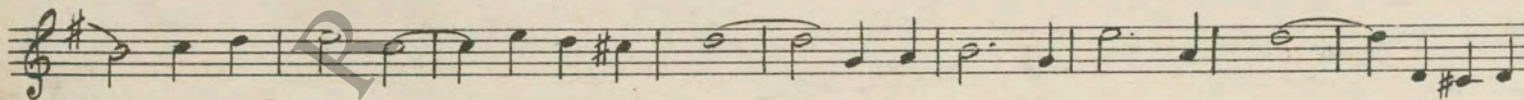
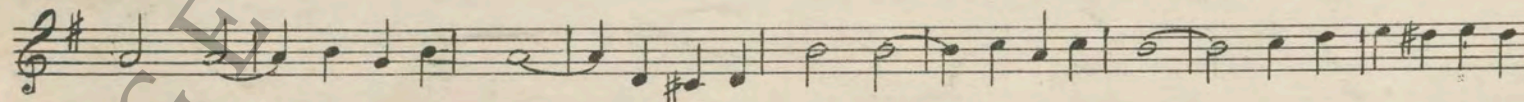
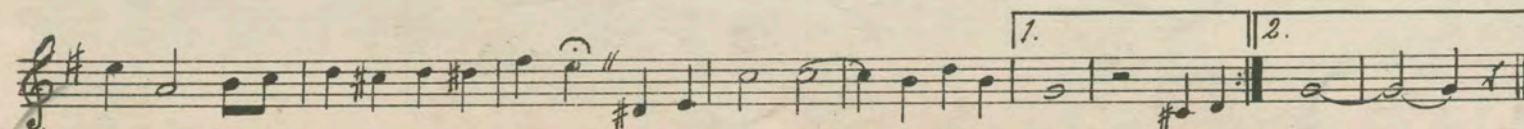
*Con Spirito*



Copyright Carl Fischer

- 5 (Title) THE SAME OLD JINX ..... LOVE THEME: Do You Love Me? (Wolf) ..... 1½ Min.

*Espressively*

35

6 (Action) SALLY DRIVES AWAY ..... RED THEME: Smile a Little Bit (Morton) ..... ¾ Min.

*Mod<sup>o</sup>*

copy 1925 Henry Waterson Inc.

This block contains the musical score for 'Sally Drives Away'. It consists of four staves of music in G major, 2/4 time. The tempo is marked 'Mod<sup>o</sup>'. The melody is simple and rhythmic, with a repeat sign at the beginning. A large diagonal watermark 'GERTRUDE EASTMAN MUSEUM' is overlaid across the page.

7 (Title) SOMETIMES LOVERS ARE TOO HAPPY TO EAT ..... When the One You Love, Loves You (Whiteman) ..... 1 Min.

*Valse*

copy 1925 Leo Feist Inc.

This block contains the musical score for 'Sometimes Lovers are Too Happy to Eat'. It consists of one staff of music in G major, 3/4 time. The tempo is marked 'Valse'. The melody is a simple waltz. A large diagonal watermark 'GERTRUDE EASTMAN MUSEUM' is overlaid across the page.

8 (Title) RED'S WEDDING DAY ARRIVED ..... Marionette (Arndt) ..... 2½ Min.

*All<sup>o</sup>*

copy 1917 Sam Fox Pub. Co.

This block contains the musical score for 'Red's Wedding Day Arrived'. It consists of one staff of music in G major, 2/4 time. The tempo is marked 'All<sup>o</sup>'. The melody is a simple march. A large diagonal watermark 'GERTRUDE EASTMAN MUSEUM' is overlaid across the page.

9 (Title) HOW DARE YOU TALK TO ME LIKE THAT. Bohemiana (Smith) ..... 1 Min.

*All<sup>o</sup> Giocoso*

copy 1909 Carl Fischer.

This block contains the musical score for 'How Dare you Talk to Me like that'. It consists of one staff of music in G major, 2/4 time. The tempo is marked 'All<sup>o</sup> Giocoso'. The melody is a simple march. A large diagonal watermark 'GERTRUDE EASTMAN MUSEUM' is overlaid across the page.

10 (Title) WHY CAN'T A FELLOW ..... Funny Faces (Ring-Hager) ..... 1½ Min.

*Mod<sup>o</sup> can bris*

copy 1926 Sam Fox Pub. Co.

This block contains the musical score for 'Why Can't a Fellow'. It consists of one staff of music in G major, 2/4 time. The tempo is marked 'Mod<sup>o</sup> can bris'. The melody is a simple march. A large diagonal watermark 'GERTRUDE EASTMAN MUSEUM' is overlaid across the page.

11 (Action) SALLY AND GIRLS DRESSING ..... Comedy Allegro (Ancliffe) ..... 1½ Min.

*All<sup>o</sup>*

copy 1926 Bosworth & Co.

This block contains the musical score for 'Sally and Girls Dressing'. It consists of one staff of music in G major, 2/4 time. The tempo is marked 'All<sup>o</sup>'. The melody is a simple march. A large diagonal watermark 'GERTRUDE EASTMAN MUSEUM' is overlaid across the page.

12 (Title) I'VE TAKEN ALL THE DUST ..... The Skyrocket (Frey) ..... 1½ Min.

*Galop*

copy 1924 Robbins music corp.

This block contains the musical score for 'I've Taken All the Dust'. It consists of one staff of music in G major, 2/4 time. The tempo is marked 'Galop'. The melody is a simple march. A large diagonal watermark 'GERTRUDE EASTMAN MUSEUM' is overlaid across the page.

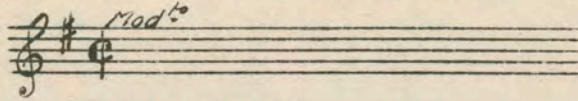
13 (Title) WELL, HERE WE ARE ..... The Chatterbox (Sanders) ..... 2 Min.

*All<sup>o</sup>*

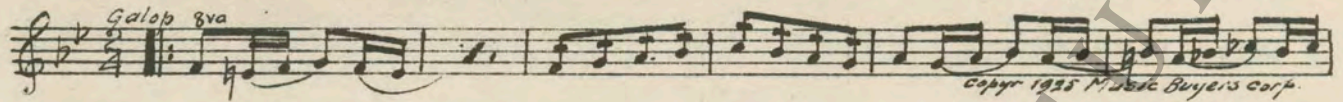
copy 1927 Geo. H. Sanders Co.

This block contains the musical score for 'Well, Here we are'. It consists of one staff of music in G major, 2/4 time. The tempo is marked 'All<sup>o</sup>'. The melody is a simple march. A large diagonal watermark 'GERTRUDE EASTMAN MUSEUM' is overlaid across the page.

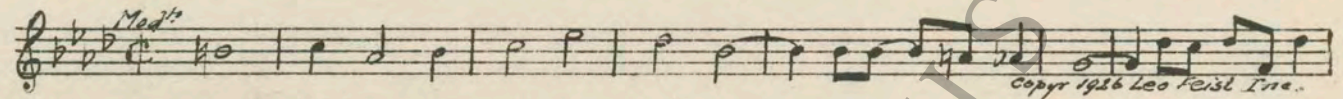
14 (Action) RED PICKS UP TWO LITTLE DOLLS ..... Repeat Red Theme No. 6 ..... 2¼ Min.



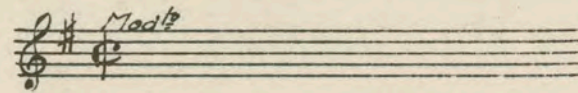
15 (Action) AUNT SEES AUTO FROM WINDOW ..... Six Furlongs (Bub) ..... 3 Min.



16 (Title) SO THIS IS YOUR NIECE ..... I'm Walking Around in Circles (Phillips) ..... 1 Min.



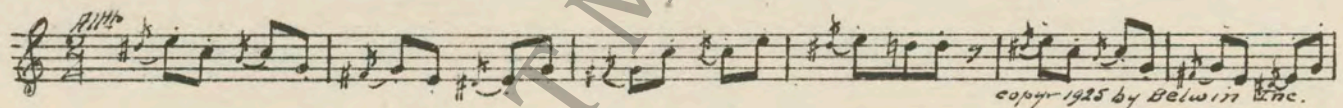
17 (Action) RED ENTERS GARAGE ..... Repeat Red Theme No. 6 ..... 1¾ Min.



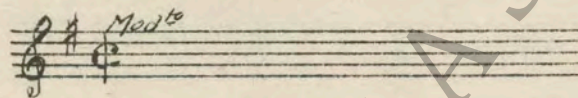
18 (Action) SALLY APPEARS IN CAR ..... Trail of Dreams (Swan) ..... 2 Min.



19 (Action) AUNT APPEARS ..... Animal Cartoonix No. 2 (Aborn) ..... ¾ Min.



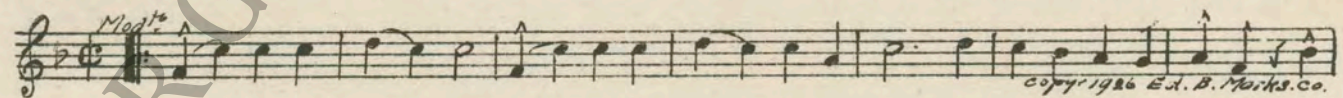
20 (Action) RED ENTERS GARAGE AGAIN ..... Repeat Red Theme No. 6 ..... ¾ Min.



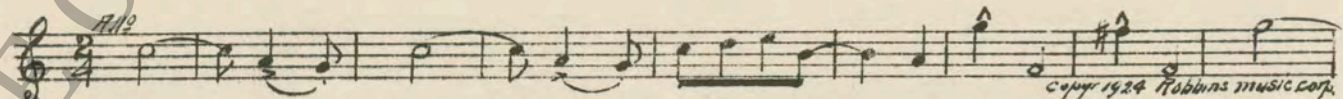
21 (Action) INSERT - POSTER ..... Flocons de Neige (Bradford) ..... 3½ Min.



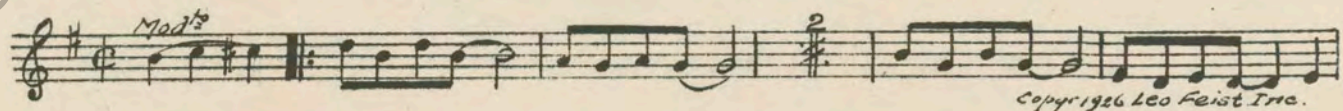
22 (Title) CAN WE USE THIS YOUNG LADY ..... He Knows His Groceries (Breau) ..... 1 Min.



23 (Action) SHOP - BOYS WORKING ON CARS ..... Ouch (Kaufman) ..... ¾ Min.



24 (Action) RED DOWNHEARTED ..... Sittin' Around (Sanders) ..... 1 Min.



25 (Title) ALL PEPPERVILLE TURNED OUT ..... Pandora (St. Clair) ..... 1 Min.

Musical notation for item 25, marked *Marcia*. Copyright 1927 Sam Fox Pub. Co.

26 (Action) CAR APPEARS DOWN TRACK ..... Breezin' Along With the Breeze (Whiting) ..... 3/4 Min.

Musical notation for item 26, marked *Mod<sup>to</sup>*. Copyright 1926 J. H. Remick & Co.

27 (Title) HURRY UP ..... Olympic (Jackson) ..... 3 1/2 Min.

Musical notation for item 27, marked *March*. Copyright 1927 Sam Fox Pub. Co.

28 (Action) RACE STARTS ..... By Wireless (Berge) ..... 3 Min.

Musical notation for item 28, marked *All<sup>o</sup>*. Copyright 1926 Robbins Music Corp.

29 (Title) IT'S COMMENCED ..... A Chase Through the Clouds (Lakay) ..... 3 1/2 Min.

Musical notation for item 29, marked *Galop*. Copyright 1927 Irving Berlin Inc.

30 (Title) NOTE: Catch crashes and racing auto effects throughout entire racing sequence. WITH ONLY TWO MORE LAPS TO GO ..... The Get-Away (Frey) ..... 3 1/2 Min.

Musical notation for item 30, marked *Tempo di Galop*. Copyright 1926 Robbins Music Corp.

31 (Title) NOTE: Effects as previously executed. HE'S TOO FRESH TO BURN ..... Mounted Police Galop (LeThiere) ..... 3 1/4 Min.

Musical notation for item 31, marked *Galop*. Copyright 1925 Hawkes & Son.

32 (Action) NOTE: Effects as previously executed. RED WINS ..... Repeat Red Theme No. 6 ..... 3/4 Min.

Musical notation for item 32, marked *Mod<sup>to</sup>*.

33 (Action) RED EMBRACES SALLY ..... Repeat Love Theme No. 5 ..... 3/4 Min.

Musical notation for item 33, marked *Express*.

Printed in U. S. A.

THE END

Complete orchestrations and single piano parts of each separate number contained hereon, can be purchased from CAMEO MUSIC SERVICE CORPORATION, 315-317 WEST 47TH STREET, NEW YORK CITY.