

M. J. MINTZ (PATENT)  
JULY 31, 1923.

William LeBaron  
presents

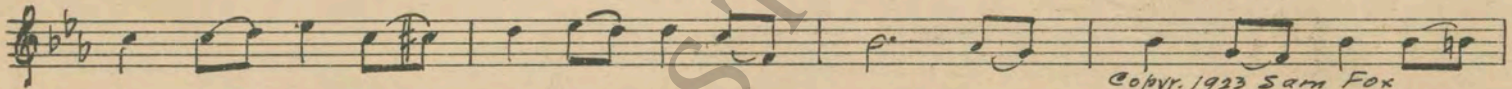
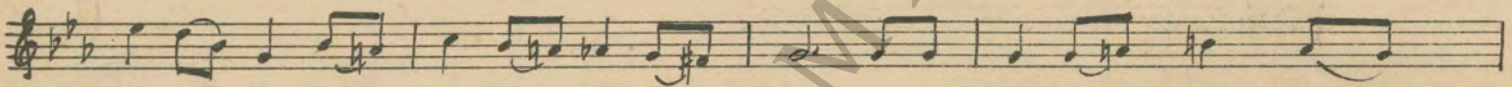
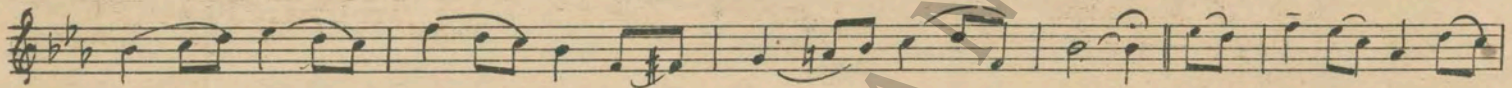
**TOM MIX**  
and "TONY"

in  
**"SON OF THE GOLDEN WEST"**

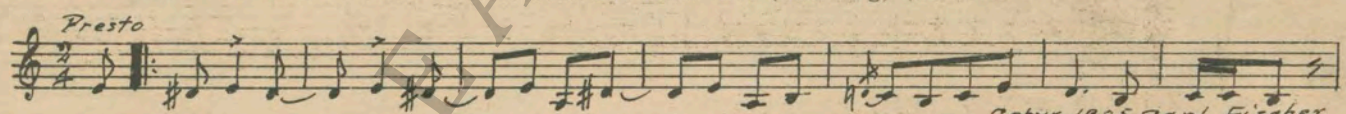
Compiled by Howard T. Wood

Distributed by  
F B O Pictures Corporation

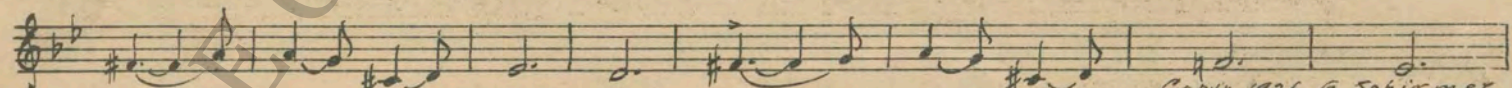
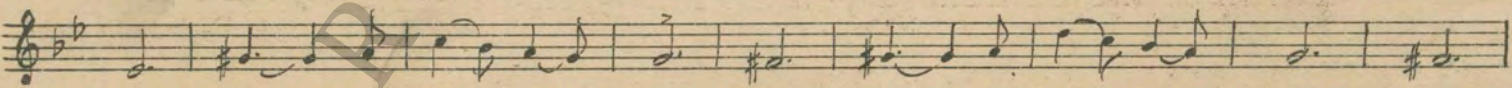
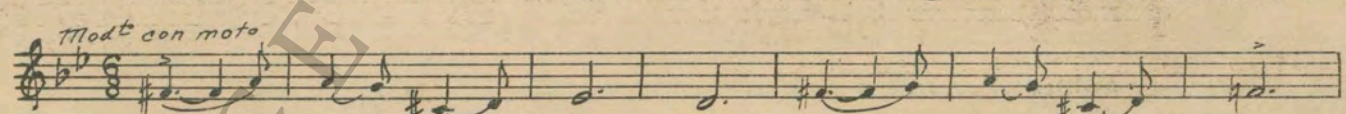
1 AT SCREENING ..... LOVE THEME: Maid of the West (Smith)..... 1 Min.



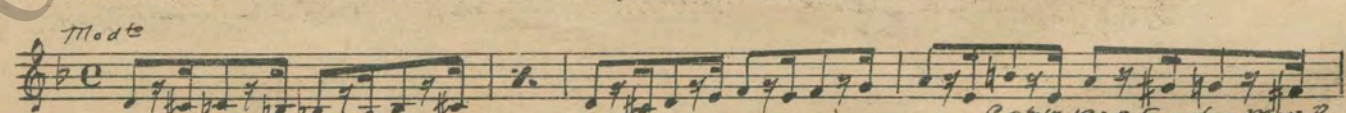
2 (Title) A RUGGED SECTION OF THE OVERLAND TRAIL ..... The Ridin' Kid (Stahlberg) (Shots)..... 2 Min.



3 (Title) A FEW MILES FROM WASATCH..... KANE THEME: Threatening Elements (Schad)..... 2 Min.



4 (Title) TRIGGER SLADE ..... Mysterious Stranger (Kav)..... 2 Min.



5 (Title) LONE BUTTE ..... Tex (Stahlberg) ..... 1¼ Min.

*All: con brio*  
 Musical notation for Lone Butte, featuring a treble clef, 2/4 time signature, and a key signature of one flat. The melody is written on a single staff with various rhythmic values and rests.  
Copr. 1925 Carl Fischer

6 (Action) CHANGE TO OUTLAW BAND..... Mystery Hurry (Berge) (Shots)..... 2¼ Min.

*All: molto*  
 Musical notation for Change to Outlaw Band, featuring a treble clef, 2/4 time signature, and a key signature of one flat. The melody is written on a single staff with various rhythmic values and rests.  
Copr. 1925 Robbins Music Corp.

7 (Action) SIGN—COLD SPRINGS ..... Repeat Love Theme No. 1..... ¾ Min.

*And: mod<sup>o</sup>*  
 Musical notation for Sign—Cold Springs, featuring a treble clef, 2/4 time signature, and a key signature of one flat. The melody is written on a single staff with various rhythmic values and rests.  
Copr. 1925 Robbins Music Corp.

8 (Action) CLOSE-UP OF GUNSHOT ..... Dram. Agitato No. 38 (Minot) (Shots)..... 1½ Min.

*Mod: con agitazione*  
 Musical notation for Close-up of Gunshot, featuring a treble clef, 2/4 time signature, and a key signature of one flat. The melody is written on a single staff with various rhythmic values and rests.  
Copr. S. M. Berg.

9 (Action) STAGE COACH HORSES RUN AWAY..... Hurry No. 21 (Langev)..... 1¼ Min.

*All: vivace*  
 Musical notation for Stage Coach Horses Run Away, featuring a treble clef, 2/4 time signature, and a key signature of one flat. The melody is written on a single staff with various rhythmic values and rests.  
Copr. 1919 Oliver Ditson.

10 (Action) AFTER RESCUE ..... Repeat Love Theme No. 1..... 1¼ Min.

*And: mod<sup>o</sup>*  
 Musical notation for After Rescue, featuring a treble clef, 2/4 time signature, and a key signature of one flat. The melody is written on a single staff with various rhythmic values and rests.  
Copr. 1925 Robbins Music Corp.

11 (Action) CHANGE TO OUTLAWS..... Repeat No. 8 "Dram. Agitato No. 38" ..... ½ Min.

*Mod: con agitazione*  
 Musical notation for Change to Outlaws, featuring a treble clef, 2/4 time signature, and a key signature of one flat. The melody is written on a single staff with various rhythmic values and rests.  
Copr. 1925 Robbins Music Corp.

12 (Action) TOM AND MARY JANE AT STAGE COACH.... Western Allegro (Riesefeld)..... ½ Min.

*All:*  
 Musical notation for Tom and Mary Jane at Stage Coach, featuring a treble clef, 2/4 time signature, and a key signature of one flat. The melody is written on a single staff with various rhythmic values and rests.  
Copr. 1918 G. Schirmer.

13 (Title) THE LITTLE SETTLEMENT OF WASATCH.... Burma Maid (Ancliffe)..... 1½ Min.

*All: grando*  
*mf*  
 Musical notation for The Little Settlement of Wasatch, featuring a treble clef, 2/4 time signature, and a key signature of one flat. The melody is written on a single staff with various rhythmic values and rests.  
Copr. 1915 G. Schirmer.

14 (Title) JAKE KELLAR—OVERLAND STAGE AGENT ..... Mysterious No. 6 (Ketelbev)..... 1½ Min.

*Mysterioso*  
 Musical notation for Jake Kellar—Overland Stage Agent, featuring a treble clef, 2/4 time signature, and a key signature of one flat. The melody is written on a single staff with various rhythmic values and rests.  
Copr. 1924 Brunswick Co.

15 (Action) CHANGE TO MAN PLAYING CONCERTINA... Sheep and Goat (Guion)..... 1½ Min.

*All: giocoso*  
 Musical notation for Change to Man Playing Concertina, featuring a treble clef, 2/4 time signature, and a key signature of one flat. The melody is written on a single staff with various rhythmic values and rests.  
Copr. 1927 G. Schirmer.

15 (Action) NOTE: Concertina imitation twice. CHANGE TO EXTERIOR..... Western Allegro (Ranee-Axt)..... 2 Min.

*All:*  
 Musical notation for Change to Exterior, featuring a treble clef, 2/4 time signature, and a key signature of one flat. The melody is written on a single staff with various rhythmic values and rests.  
Copr. 1923 Robbins Music Corp.

17 (Action) INSERT—LETTER ..... Agitato Misterioso (Langev)..... 1 Min.

*All: mist.*  
 Musical notation for Insert—Letter, featuring a treble clef, 2/4 time signature, and a key signature of one flat. The melody is written on a single staff with various rhythmic values and rests.  
Copr. 1918 G. Schirmer.

18 (Action) AFTER TITLE: "I'VE DONE ALL I CAN".....Allegretto Burlesco (Drigo's Cinema Classics).....1 Min

Musical notation for item 18, featuring a treble clef, a key signature of one sharp (F#), and a 2/4 time signature. The tempo marking is *All<sup>o</sup>*. The music consists of a single melodic line with various rhythmic values and rests. Copyright information at the bottom right reads "Copyr. 1926 Carl Fischer".

19 (Action) KANE SPEAKS TO CALHOUN.....Repeat Kane Theme No. 3.....1 1/2 Min.

Musical notation for item 19, consisting of a single treble clef staff with a key signature of one flat (Bb) and a common time signature (C). The tempo marking is *Mod<sup>o</sup> con moto*. The staff is mostly empty, indicating a repeat of a previously defined theme.

20 (Action) KANE WALKS AWAY AFTER ARGUMENT....Rural Flirts (Bradford).....2 Min.

Musical notation for item 20, featuring a treble clef, a key signature of one sharp (F#), and a 2/4 time signature. The tempo marking is *All<sup>o</sup>*. The music is a single melodic line. Copyright information at the bottom right reads "Copyr. 1925 Belwin Inc.".

21 (Title) WHAT ARE THE GLAD RAGS FOR?.....A Gay Lothario (Bierman).....2 1/4 Min.

Musical notation for item 21, featuring a treble clef, a key signature of one flat (Bb), and a 2/4 time signature. The tempo marking is *Mod<sup>o</sup> con grazia*. The music is a single melodic line. Copyright information at the bottom right reads "Copyr. 1927 American Comp.".

22 (Action) TOM ENTERS CALHOUN'S HOUSE.....Happy Jacqueline (Mondrone).....1 3/4 Min.

Musical notation for item 22, featuring a treble clef, a key signature of one sharp (F#), and a 2/4 time signature. The tempo marking is *All<sup>o</sup> mod<sup>o</sup>*. The music is a single melodic line. Copyright information at the bottom right reads "Copyr. 1927 G. Schirmer".

23 (Action) MAN PLAYS CONCERTINA.....Repeat No. 15 "Sheep and Goat".....1 1/2 Min.

Musical notation for item 23, consisting of a single treble clef staff with a key signature of one sharp (F#) and a 2/4 time signature. The tempo marking is *All<sup>o</sup> giocoso*. The staff is mostly empty, indicating a repeat of a previously defined theme.

24 (Action) TOM AND MARY LEAVE HOUSE.....Repeat Love Theme No. 1.....1 Min.  
NOTE: Concertina imitation.

Musical notation for item 24, consisting of a single treble clef staff with a key signature of one flat (Bb) and a common time signature (C). The tempo marking is *And<sup>te</sup> mod<sup>o</sup>*. The staff is mostly empty, indicating a repeat of a previously defined theme.

25 (Title) WITH THE BANDIT RAIDS INCREASING....Misterioso Irresoluto (Langey).....2 1/2 Min.

Musical notation for item 25, featuring a treble clef, a key signature of one sharp (F#), and a 6/8 time signature. The tempo marking is *Mod<sup>o</sup>*. The music is a single melodic line. Copyright information at the bottom right reads "Copyr. 1918 G. Schirmer".

26 (Action) CHANGE TO TOM AND MARY.....Fleeting Shadows (Weiss).....1 1/2 Min.

Musical notation for item 26, featuring a treble clef, a key signature of one flat (Bb), and a 3/4 time signature. The tempo marking is *Temp<sup>o</sup> alla Valse*. The music is a single melodic line. Copyright information at the bottom right reads "Copyr. 1925 G. Schirmer".

27 (Title) I WOULDN'T TAKE HARDY TOO SERIOUSLY.....Repeat Kane Theme No. 3.....1 Min.

Musical notation for item 27, consisting of a single treble clef staff with a key signature of one flat (Bb) and a common time signature (C). The tempo marking is *Mod<sup>o</sup> con moto*. The staff is mostly empty, indicating a repeat of a previously defined theme.

28 (Action) CHANGE TO TOM AND RITA.....Second Misterioso a la Valse (Savino).....1 Min.

Musical notation for item 28, featuring a treble clef, a key signature of one sharp (F#), and a 2/4 time signature. The tempo marking is *All<sup>o</sup> mod<sup>o</sup>*. The music is a single melodic line. Copyright information at the bottom right reads "Copyr. 1925 Robbins Music Cor.".

29 (Title) I'M CONVINCED NOW.....Villain (Kay) (Shot).....2 Min.

Musical notation for item 29, featuring a treble clef, a key signature of one sharp (F#), and a common time signature (C). The tempo marking is *All<sup>o</sup> mod<sup>o</sup>*. The music is a single melodic line. Copyright information at the bottom right reads "Copyr. 1925 Forster Music Co.".

30 (Action) PONY EXPRESS RIDER ARRIVES.....Western Allegro (Falck).....1 1/2 Min.

Musical notation for item 30, featuring a treble clef, a key signature of one sharp (F#), and a 2/4 time signature. The tempo marking is *All<sup>o</sup>*. The music is a single melodic line. Copyright information at the bottom right reads "Copyr. 1918 G. Schirmer".

31 (Title) **LATER THAT DAY AT SUMMIT**..... Huetamo (Ancliffe) ..... 1½ Min.

Musical notation for 'Later That Day at Summit' in 2/4 time, marked *All.<sup>o</sup> mf*. Copyright 1914 Hawkes & Son.

32 (Action) **CHANGE TO KANE AND OUTLAWS**..... Repeat Kane Theme No. 3..... 1 Min.

Musical notation for 'Change to Kane and Outlaws' in 6/8 time, marked *Mod<sup>o</sup> con moto*.

33 (Action) **OUTLAW BAND RIDES AWAY**..... Hurry No. 1 (Zamecnik) (Shots)..... 2 Min.

Musical notation for 'Outlaw Band Rides Away' in 2/4 time, marked *All.<sup>o</sup> mf*. Copyright 1919 Sam Fox.

34 (Action) **CHANGE TO VILLAGE STREET—NIGHT**..... Agitato No. 6 (Kiefert)..... 2 Min.

Musical notation for 'Change to Village Street—Night' in 2/4 time, marked *Agitato*. Copyright 1919 S. M. Berg.

35 (Action) **INTERIOR—OUTLAW PICKS UP CONCERTINA**..... Tumultuoso (Gabriel Marie)..... 2 Min.

Musical notation for 'Interior—Outlaw Picks up Concertina' in 2/4 time, marked *Vivace ff*. Copyright 1918 G. Ricordi & Co.

36 (Action) **TOM ARRIVES AT VILLAGE**..... Poursuite Dramatique (Drigo's Cinema Classics)..... 2 Min.

Musical notation for 'Tom Arrives at Village' in 6/8 time, marked *All.<sup>o</sup> conitato*. Copyright 1925 Carl Fischer.

37 (Title) **WE'LL SPLIT THIS SURVEY GOLD**..... Repeat Kane Theme No. 3..... 2 Min.

Musical notation for 'We'll Split This Survey Gold' in 6/8 time, marked *mod<sup>o</sup> con moto*.

38 (Action) **TOM COMES DOWN STAIRS**..... Dram. Agitato No. 1 (Ketelbey)..... 2 Min.

Musical notation for 'Tom Comes Down Stairs' in 4/4 time, marked *Vivace*. Copyright 1924 Bosworth Co.

39 (Action) **SOLDIERS OPEN FIRE AS OUTLAWS TRY TO LEAVE HOUSE**..... The Ambush (Patou)..... 2¼ Min.

Musical notation for 'Soldiers Open Fire as Outlaws Try to Leave House' in 4/4 time, marked *All.<sup>o</sup> agitato* and *lento*. Copyright 1925 Hawkes & Son.

40 (Action) **HOUSE CRASHES—SURRENDER**..... Finale from "Symphonette" (Berge)..... 1¼ Min.

Musical notation for 'House Crashes—Surrender' in 2/4 time, marked *Vivo* and *lento*. Copyright 1917 S. M. Berg.

41 (Action) **TOM JOINS MARY**..... Repeat Love Theme No. 1..... 1 Min.

Musical notation for 'Tom Joins Mary' in 6/8 time, marked *And<sup>te</sup> mod<sup>te</sup>*.

THE END

Printed in U. S. A.

Complete orchestrations and single piano parts of each separate number contained hereon, can be purchased from CAMEO MUSIC SERVICE CORPORATION, 315-317 WEST 47TH STREET, NEW YORK CITY.