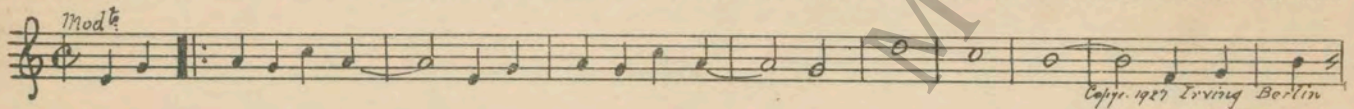


M. J. MINTZ (PATENT)
JULY 31, 1923.

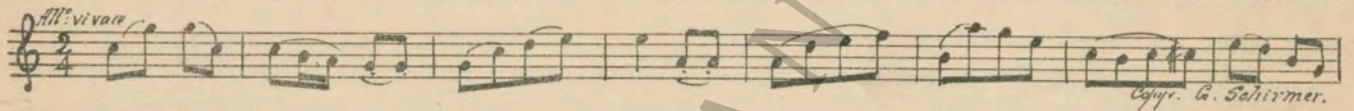
JOSEPH P. KENNEDY
presents
"STOCKS AND BLONDES"

with
JACQUELINE LOGAN
Gertrude Astor and Richard Skeets Gallagher
Written and Directed by Dudley Murphy
Compiled by James C. Bradford
Distributed by
F B O PICTURES CORPORATION

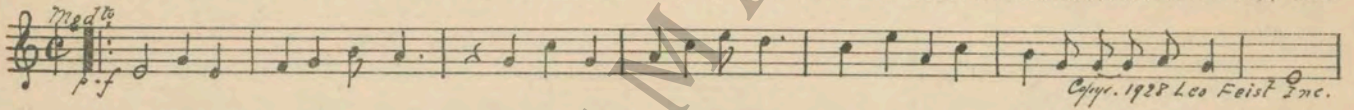
1. AT SCREENING Mv New York (Berlin) 1½ Min.



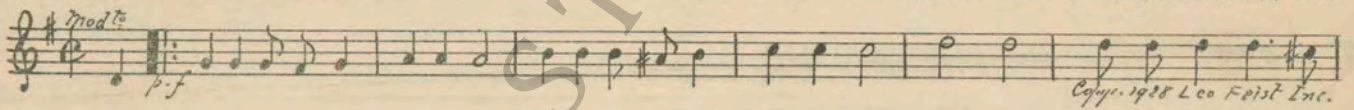
2. (Title) AT THE END OF BROADWAY Le Retour (Bizet) 3¾ Min.



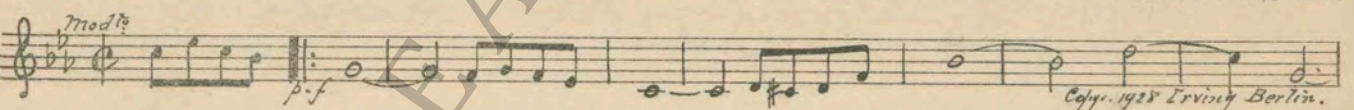
3. (Title) AT THE OTHER END OF BROADWAY Too Busy (Cohn) 1¾ Min.



4. (Title) IF HE'S SUCH A HOT NUMBER There Ought To Be a Law Against That (Friend) ¾ Min.



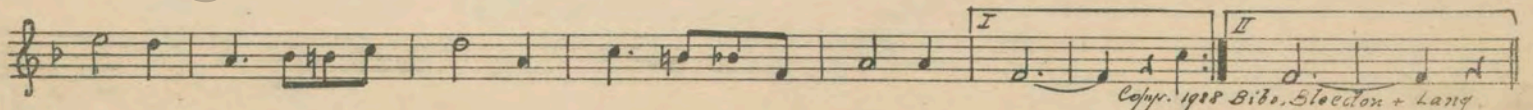
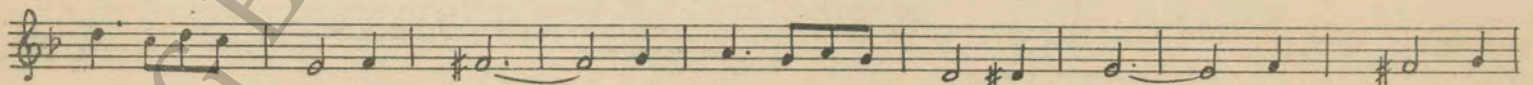
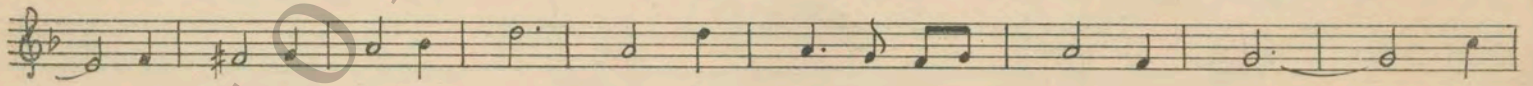
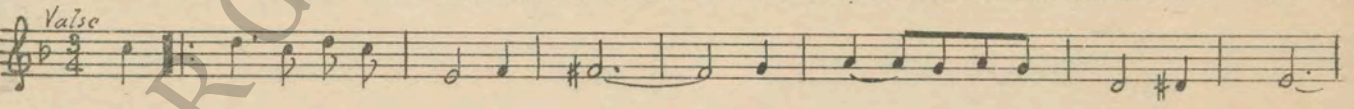
5. (Action) ORCHESTRA STARTS Sunshine (Little) ½ Min.



6. (Title) PATSY AND GOLDIE Melodie d'Amour (Clements) ¾ Min.



7. (Title) COME ON PATSY THEME: There'll Never Be Another You (Bergner) 2¾ Min.



8. (Title) EVER SINCE HIS AUNT Pastime (Clutsam) 1 Min.

Musical notation for 'Ever Since His Aunt' in treble clef, key of D major, 2/4 time. The piece is marked 'Allegro' and 'Copy. 1926 Hawkes + Son'.

9. (Title) TOM'S FAVORITE MORNING EXERCISE..... Polly (Zamecnik) 1¼ Min.

Musical notation for 'Tom's Favorite Morning Exercise' in treble clef, key of D major, 2/4 time. The piece is marked 'Brightly 8va' and 'Copy. 1926 Sam Fox. Pub.'.

10. (Action) PATSY READING MAGAZINE Repeat Theme No. 7 ½ Min.

Musical notation for 'Patsy Reading Magazine' in treble clef, key of D major, 3/4 time. The piece is marked 'Valse'.

Continuation of musical notation for 'Patsy Reading Magazine'.

Continuation of musical notation for 'Patsy Reading Magazine'.

Continuation of musical notation for 'Patsy Reading Magazine' with first and second endings.

11. (Title) WHAT BRINGS YOU HOME? Flapperette (Greer) 1¼ Min.

Musical notation for 'What Brings You Home?' in treble clef, key of D major, 2/4 time. The piece is marked 'mf' and 'Copy. 1926 Jack Mills Inc.'.

12. (Title) SIT DOWN DEAR AND TELL ME Reverie d'Amour (D'Aquin) 2¼ Min.

Musical notation for 'Sit Down Dear and Tell Me' in treble clef, key of D major, 2/4 time. The piece is marked 'And^{te}' and 'Copy. 1925 Sonnemann Music Co.'.

13. (Title) WELL, ARE YOU THROUGH WITH THAT?.. Chatter (Kahn) 1¾ Min.

Musical notation for 'Well, Are You Through with That?' in treble clef, key of D major, 2/4 time. The piece is marked 'Tempo rubato' and '8va Lower' and 'Copy. 1926 Sonnemann Music Co.'.

14. (Action) WINE GLASS SEEN ON TABLE Starlight and Tulips (Wendling) 2 Min.

Musical notation for 'Wine Glass Seen on Table' in treble clef, key of D major, 2/4 time. The piece is marked 'Moderato' and 'Copy. 1928 Sam Fox'.

15. (Title) NOTE: Play "P" in dance tempo.
FOR THE FIRST TIME Rosemary (Zamecnik) 1¾ Min.

Musical notation for 'For the First Time' in treble clef, key of D major, 2/4 time. The piece is marked 'Valse' and 'mf' and 'Copy. 1928 Sam Fox. Pub.'.

16. (Action) INSERT—"POWERS POOL IS BOOSTING".... Rural Flirts (Bradford) 4¾ Min.

Musical notation for 'Rural Flirts' in treble clef, key of D major, 2/4 time. The piece is marked 'Allegro' and 'Copy. 1925 Belwin Inc.'.

17. (Action) POWERS APPEARS FROM OFFICE Spring Cleaning (Bradford) 1/2 Min.

Musical notation for item 17: Treble clef, 6/8 time, key signature of one sharp (F#), tempo marking *All: non troppo*, dynamic *f*. Copyright: *Copy. 1928 Carl Fischer.*

18. (Action) PATSY AT MIRROR I'm Sitting On Top of the World (Henderson) 1 Min.

Musical notation for item 18: Treble clef, 2/4 time, key signature of one sharp (F#), tempo marking *Mod:to*. Copyright: *Copy. 1925 Leo Feist Inc.*

19. (Title) THANK GOODNESS Repeat Theme No. 10 3/4 Min.

Musical notation for item 19: Treble clef, 3/4 time, key signature of one flat (Bb), tempo marking *Valse*.

20. (Action) INSERT—"KIT KAT CLUB" Crazy Words—Crazy Tune (Ager) 3/4 Min.

Musical notation for item 20: Treble clef, 3/4 time, key signature of one sharp (F#), tempo marking *Mod:to*, dynamic *f*. Copyright: *Copy. 1927 Ager, Yellen & Bornstein.*

21. (Title) NOTE: Play in hot dance tempo. DO YOU MIND IF WE TALK Sweethearts (Rosey) 3 Min.

Musical notation for item 21: Treble clef, 2/4 time, key signature of one flat (Bb), tempo marking *And:to Mod:to*. Copyright: *Copy. 1928 G. M. Rosenberg.*

22. (Action) TOM AT BROKER'S OFFICE Nola (Arndt) 1 Min.

Musical notation for item 22: Treble clef, 2/4 time, key signature of one sharp (F#), tempo marking *Alto Mod:to*. Copyright: *Copy. 1916 Sam Fox Pub. Co.*

23. (Title) WALL STREET HAD FURNISHED THE HOME Repeat No. 18 "I'm Sitting On Top of the World" 1/2 Min.

Musical notation for item 23: Treble clef, 2/4 time, key signature of one flat (Bb), tempo marking *Mod:to*.

24. (Action) FLASH TO CABARET Gotta a Big Date With a Little Girl (Tobias) 1/4 Min.

Musical notation for item 24: Treble clef, 2/4 time, key signature of one flat (Bb), tempo marking *Mod:to*, dynamic *f*. Copyright: *Copy. 1928 Leo Feist.*

25. (Action) GOLDIE AND POWERS LEAVE TABLE Strawberries (Kaufman) 1 1/2 Min.

Musical notation for item 25: Treble clef, 2/4 time, key signature of one flat (Bb), tempo marking *All: Mod:to*. Copyright: *Copy. 1925 Robbins Music Co.*

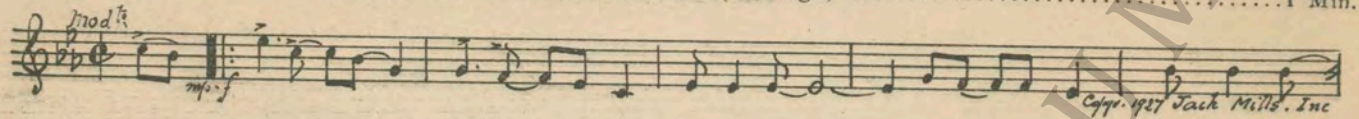
26. (Action) HE OPENS DOOR Appassionato Patetico (Bradford) 1/2 Min.

Musical notation for item 26: Treble clef, 2/4 time, key signature of one flat (Bb), tempo marking *And:to con moto*, dynamic *f*. Copyright: *Copy. 1924 Belwin Co.*

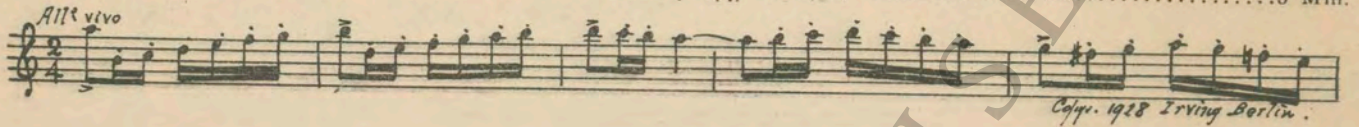
27. (Action) TOM AND GIRLS AT TABLE Appassionato Lirico (Berge) 3 1/2 Min.

Musical notation for item 27: Treble clef, 2/4 time, key signature of one flat (Bb), tempo marking *Molto Mod:to*, dynamic *mf*. Copyright: *Copy. 1925 Belwin Inc.*

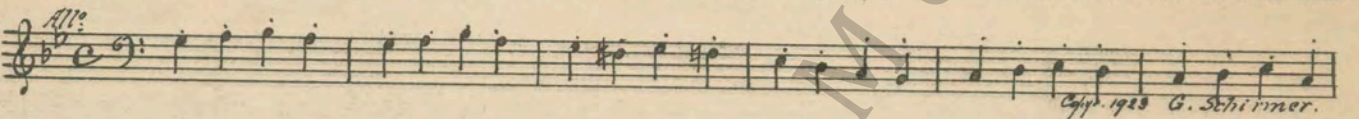
28. (Title) I'VE GOT IT Baltimore (McHugh) 1 Min.



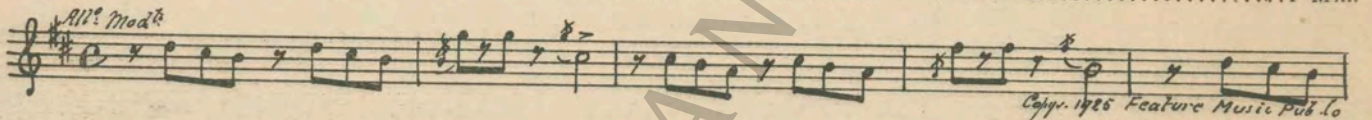
29. (Action) TOM IN BROKER'S OFFICE Hustle-Bustle (Delille) 3 Min.



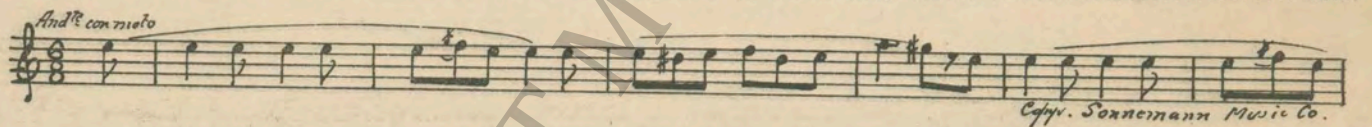
30. (Title) IF IT DROPS TO 90 Dramatic Allegro (Savino) 2 Min.



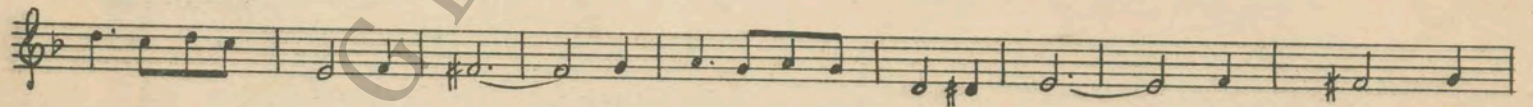
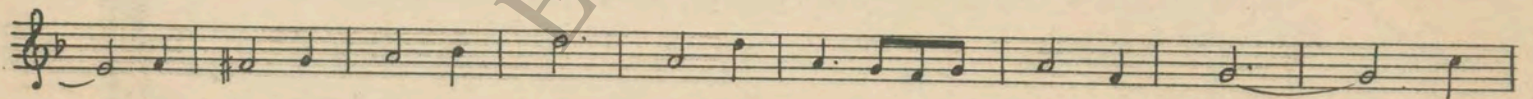
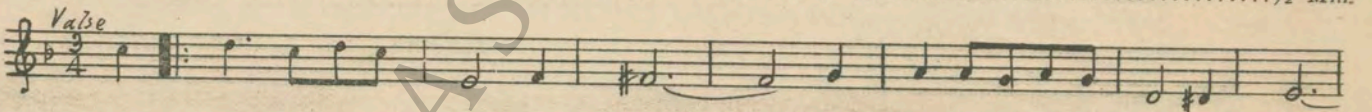
31. (Title) THE SAPS HAVE GONE Dainty Blossoms (Kahn) 1 Min.



32. (Action) POWERS ENTERS ROOM Uneasiness (Mendelssohn) 1 Min.



33. (Action) CLOSE-UP OF PATSY AND TOM Repeat Theme No. 10 1/2 Min.



Printed in U. S. A.

THE END

Complete orchestrations and single piano parts of each separate number contained hereon, can be purchased from CAMEO MUSIC SERVICE CORPORATION, 315-317 WEST 47TH STREET, NEW YORK CITY.