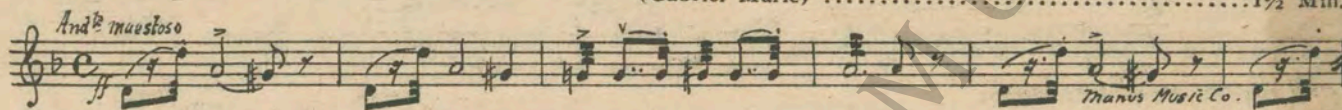
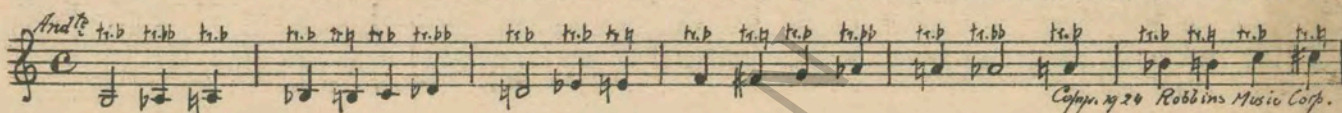


**FIRST NATIONAL PICTURES, Inc.**  
 presents  
**"THE STRANGE CASE OF CAPTAIN RAMPER"**  
 with  
**PAUL WEGENER and Mary Johnson**  
 Compiled by James C. Bradford  
 A Gefu Production

1. **AT SCREENING** ..... **RAMPER THEME: Le Seigneur de Kermor**  
 (Gabriel Marie) ..... 1½ Min.



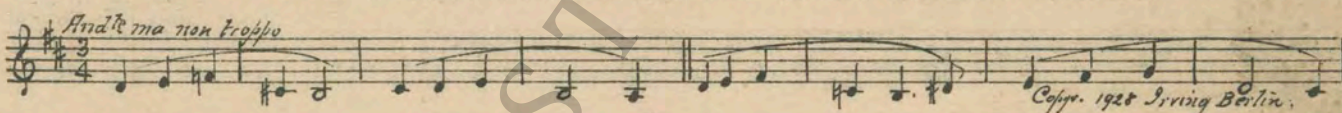
2. (Action) **MECHANIC SPINS PROPELLER** ..... **In the Clouds (Rapee-Axt)** ..... ½ Min.



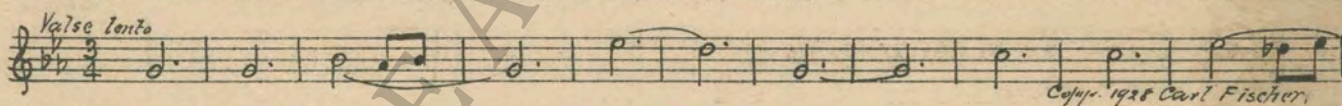
3. (Action) **INSERT—NEWSPAPER** ..... **Lamento from Pique Dame (Tschaikowsky)** ..... ¼ Min.



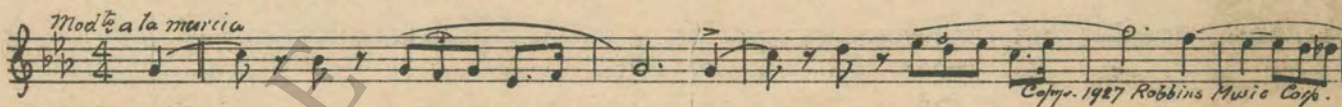
4. (Action) **INSERT—"HOPE OF ETC."** ..... **Passion's Slave (Jacquet)** ..... ¾ Min.



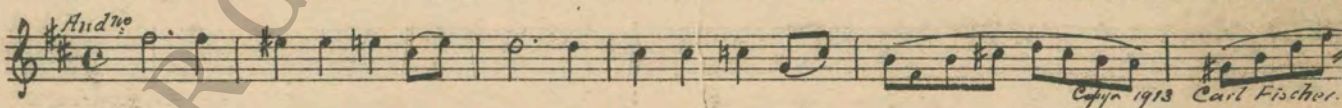
5. (Action) **AFTER PISTOL REPORT** ..... **Tristesse (Bradford)** ..... 1 Min.



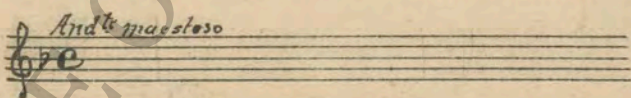
6. (Title) **IN THE LONG NIGHT** ..... **March of the Phantom Hosts (Axt)** ..... 2½ Min.



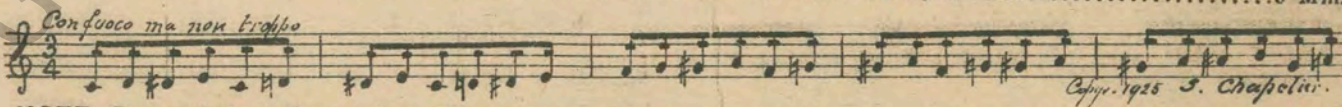
7. (Action) **FIGURE APPEARS ON DECK OF WHALER—DESCENDS STAIRWAY** ..... **Intermezzo from "Sigurd Jorsolfar" (Grieg)** ..... ½ Min.



8. (Action) **WEIRD CALL SOUNDS** ..... **Repeat Ramper Theme No. 1** ..... 1½ Min.



9. (Action) **CAPTAIN LEAVES WHALER ON QUEST** ..... **Bientot Libre (Gabriel Marie)** ..... 3 Min.



NOTE: Start quietly until uneasiness of crew starts, then work up until close-up of Ramper.

10. (Title) **QUICK, IT'S IN THE SHIP** ..... Scene Dramatique (Benoit) ..... 1 Min.  

*All<sup>o</sup> agitato*  
*mf*  
 Manus Music Co.
11. (Action) **CLOSE-UP OF RAMPER** ..... Repeat Ramper Theme No. 1 ..... 2 Min.  

*And<sup>te</sup> maestoso*
12. (Title) **WHEN SPRING OPENED UP WATER WAYS**..Morning On the Zuider Zee from "In Holland" (Kriens)..1½ Min.  

NOTE: Produce weird call as in cue (8) when bear appears.

*All<sup>o</sup>*  
 Copyr. 1911 Carl Fischer.
13. (Title) **BACK TO THE WORLD OF MEN** ..... Monkey-Hop (Rapee) ..... 1½ Min.  

*All<sup>o</sup> giocoso*  
 Copyr. 1927 Belwin Inc.
14. (Action) **JIM AND GIRL** ..... GIRL THEME: Amorous Adventure (Bradford)..... 1 Min.  

*Tranquillo*  
 Copyr. 1928 Sonnemann Music Co.
15. (Action) **EXTERIOR-AMUSEMENT PARK** ..... Over the Waves (Rosas) ..... 2 Min.  

*Valse*  
 Copyr. Emil Ascher.
16. (Action) **SAILOR AT TABLE TELING OF EXPERIENCE WITH STRANGE CREATURE** ..... Banquos Ghost (Leuschner) ..... 1 Min.  

*Mod<sup>to</sup>*  
 Copyr. 1925 Albert Schaper.
17. (Action) **DECK OF WHALER** ..... The Captive (Savino) ..... 1½ Min.  

*Gravo e sost.*  
 Copyr. 1927 Robbins Music Corp.
18. (Action) **GIRL STROKES RAMPER'S HEAD** ..... Repeat Girl Theme No. 14 ..... 1 Min.  

*Tranquillo*
19. (Title) **THAT'S NOT A MONKEY, IT'S A MAN**..... Dante's Inferno (Borch) ..... 1¼ Min.  

*All<sup>o</sup>*  
 Copyr. 1925 Belwin Inc.
20. (Action) **JIM ON PLATFORM OF SIDE SHOW**..... Beat It (Kaufman) ..... 1½ Min.  

*Ona Step*  
 Copyr. 1928 Irving Berlin.
21. (Title) **IS TONY IN?** ..... At Dawn (Deije) ..... 1½ Min.  

*Mod<sup>to</sup>*  
 Copyr. 1924 Feature Music Co.
22. (Action) **SHE OPENS BOX** ..... Repeat Girl Theme No. 14 ..... 1 Min.  

*Tranquillo*

23. (Action) PIANO PLAYING OUTSIDE ..... Dolly Dimples (Alter) ..... 1/2 Min.

Musical notation for "PIANO PLAYING OUTSIDE" in 2/4 time, marked *Mod<sup>to</sup>*. Copyright 1927 Paul Wineman Pub.

24. (Action) RAMPER APPEARS IN CAGE ..... Repeat Ramper Theme No. 1 ..... 1 Min.

Musical notation for "RAMPER APPEARS IN CAGE" in 2/4 time, marked *And<sup>te</sup> maestoso*.

25. (Action) GIRL ENTERS CAGE ..... Repeat Girl Theme No. 14 ..... 1/2 Min.

Musical notation for "GIRL ENTERS CAGE" in 3/4 time, marked *Tranquillo*.

26. (Action) DRESSING ROOM ..... Rhythmic Misterioso (Damesek) ..... 2 Min.

Musical notation for "DRESSING ROOM" in 2/4 time, marked *Mod<sup>to</sup> dramatis*. Copyright Irving Berlin.

27. (Title) GOOD-NIGHT TEDDY ..... LOVERS THEME: Rosemary (Zamecnik) ..... 3/4 Min.

Musical notation for "GOOD-NIGHT TEDDY" in 3/4 time, marked *Valse Mod<sup>to</sup>*. Copyright 1928 Sam Fox.

28. (Action) GUARD APPEARS WITH DOGS ..... Repeat Ramper Theme No. 1 ..... 1/2 Min.

Musical notation for "GUARD APPEARS WITH DOGS" in 2/4 time, marked *And<sup>te</sup> Maestoso*.

29. (Title) THE SANITARIUM OF ..... NOTE: Produce weird call as bears are seen similar to one as in cue Nos. 8 and 11, also dogs barking. Prelude from "Cyrano" (Damrosch) ..... 1 1/4 Min.

Musical notation for "THE SANITARIUM OF" in 3/4 time, marked *Mod<sup>to</sup>*. Copyright 1913 G. Schirmer.

30. (Action) FLASH-BACK TO FAIR GROUNDS ..... Warming Up (Kaufman) ..... 1/2 Min.

Musical notation for "FLASH-BACK TO FAIR GROUNDS" in 2/4 time, marked *One step*. Copyright 1928 Irving Berlin.

31. (Action) RAMPER AND GIRL IN CAGE ..... Repeat Girl Theme No. 14 ..... 1 1/4 Min.

Musical notation for "RAMPER AND GIRL IN CAGE" in 3/4 time, marked *Tranquillo*.

32. (Action) STRANGE MAN CREEPS TOWARDS GIRL ..... Agitato Lamentoso (Pasternack) ..... 2 Min.

Musical notation for "STRANGE MAN CREEPS TOWARDS GIRL" in 2/4 time, marked *Molto All<sup>o</sup> ed agitato*. Copyright 1928 Irving Berlin.

33. (Action) RAMPER PICKS GIRL UP IN HIS ARMS ..... The Swan (St. Saens) ..... 1 1/4 Min.

Musical notation for "RAMPER PICKS GIRL UP IN HIS ARMS" in 3/4 time, marked *Adagio*. Copyright Carl Fischer.

34. (Action) JIM AND PROFESSOR ..... Lamento from Eugene Onegin (Tschaikowsky) ..... 2 1/4 Min.

Musical notation for "JIM AND PROFESSOR" in 2/4 time, marked *And<sup>te</sup>*. Copyright 1926 Manus Mills.

35. (Title) GET THE STRAIT-JACKET ..... Implorations (Pasternack) ..... 3 Min.

Musical notation for "GET THE STRAIT-JACKET" in 2/4 time, marked *Mod<sup>to</sup> ma sob.*. Copyright 1928 Irving Berlin.

36. (Action) **LABORATORY OF PROFESSOR** ..... Fantasia from "Siegfried" (Wagner) ..... 4¼ Min.

*All: Mod<sup>to</sup>*

Copy. 1923 G. Schirmer.

37. (Action) **RAMPER SLEEPING IN LOCKED ROOM**..... Repeat Girl Theme No. 14 ..... ½ Min.

*Tranquillo*

38. (Action) **HE RISES FROM BED—POUNDS ON DOOR**... Dramatic Allegro (Savino) ..... 2¾ Min.

*All:*

Copy. 1923 G. Schirmer.

39. (Action) **IN FRONT OF OLD HOME**..... A Keltic Lament (Foulds) ..... 1¼ Min.

*Lento*  
*mf*

Copy. 1916 Hawkes & Son.

40. (Action) **LEAVES SCENE WITH TWO STRANGERS**... Poeme Dramatique (Fourdrain) ..... 5 Min.

*Sostenuto*

Manus Music Co.

41. (Action) **PROFESSOR TELEPHONING** ..... Uneasiness (Mendelssohn) ..... 1½ Min.

*And<sup>te</sup> con moto*

Copy. 1926 Sonnemann Music Co.

42. (Action) **PROFESSOR IN OFFICE—RAMPER ENTERS**... Adagio Pathetique (Godard) ..... 2 Min.

*Adagio*  
*mf*

Copy. 1910 G. Schirmer.

43. (Action) **GIRL IN OUTER OFFICE** ..... Repeat Girl Theme No. 14 ..... 2¾ Min.

*Tranquillo*

44. (Title) **THE WORLD HAS NOT FORGOTTEN YOU**... Melody of Peace (Martin) ..... 1½ Min.

*And<sup>te</sup>*

Copy. 1920 Carl Fischer.

45. (Action) **FREDDY AND GIRL** ..... Repeat Lovers Theme No. 27 ..... 1¾ Min.

*Valse mod<sup>to</sup>*

46. (Action) **JIM AT DESK—FREDDY AND GIRL ENTER**... Into the Dawn With You (Lee) ..... 1 Min.

*Mod<sup>to</sup> con espr.*

Copy. 1928 Sam Fox.

47. (Action) **STEAMER** ..... Largo from New World's Symphony (Dvorak) ..... ½ Min.

*Largo*

Copy. 1912 Carl Fischer.

Printed in U. S. A.

THE END

Complete orchestrations and single piano parts of each separate number contained hereon, can be purchased from **CAMEO MUSIC SERVICE CORPORATION**, 315-317 WEST 47TH STREET, NEW YORK CITY.