

Thematic Music  **Cue Sheet**

M. J. MINTZ (PATENT)
JULY 31, 1925.



Edward Sedgwick's Production

TIN HATS

with

**CONRAD NAGEL, CLAIRE WINDSOR, GEORGE COOPER
BERT ROACH and TOM O'BRIEN**

Adapted by

Lew Lipton and Donald Lee

From the story by Edward Sedgwick

Continuity by Albert Lewin

Directed by Edward Sedgwick

Compiled by Ernst Luz

A METRO-GOLDWYN-MAYER PICTURE

Length of film 7 reels (6560 feet)

Maximum projection time 1 hour, 15 minutes

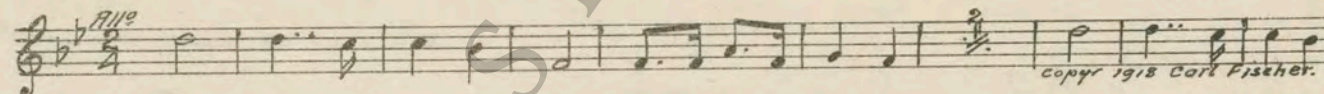
- 1...AT SCREENINGIn A Critical Situation (Becca) ¼ Min.



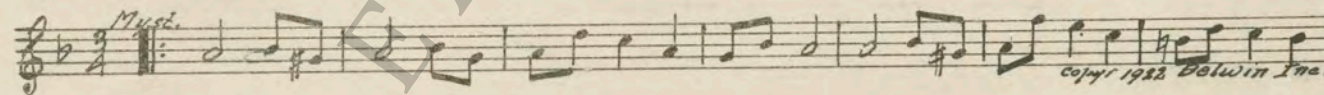
- 2 (Title) BACK IN 1918American Patrol (Meacham) 3½ Min.



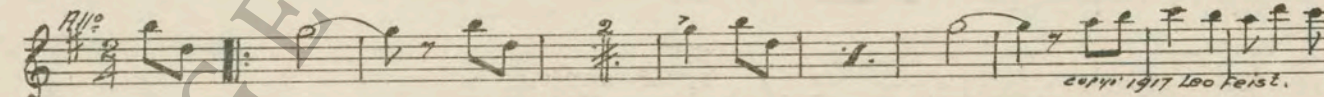
- 3 (Title) IN THE VERDANT FIELDS OF SUNNY FRANCEHail, Hail, the Gang's All Here (Lake) 1½ Min.



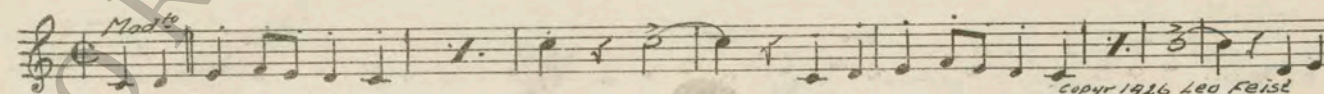
- 4 (Title) FRONT LINE TRENCHESCreepy Creeps (Borch) 1½ Min.



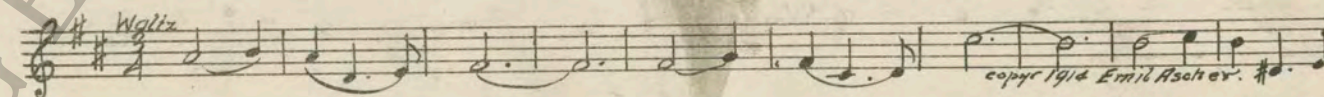
- 5 (Action) MAN IN TRENCH BLOWS WHISTLEOver There (Cohan) ¼ Min.



- 6 (Title) PEACEMoving Picture Actors on Parade (Rose)..... 2¼ Min.



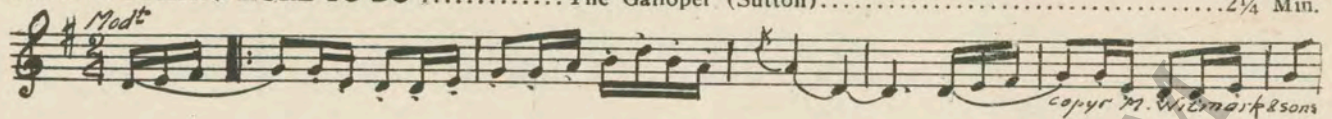
- 7 (Title) CUT PRICE GLORYTo Thee (Waldteufel) 4½ Min.



- 8 (Title) NOT YETThe Rocking Horse Parade (Ring-Hager)..... 3½ Min.



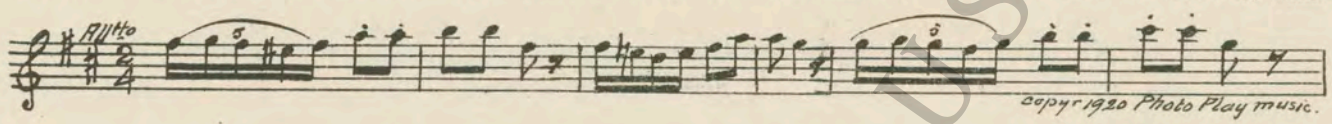
9 (Title) **HAVING NOTHING MORE TO DO** The Galloper (Sutton).....2¼ Min.



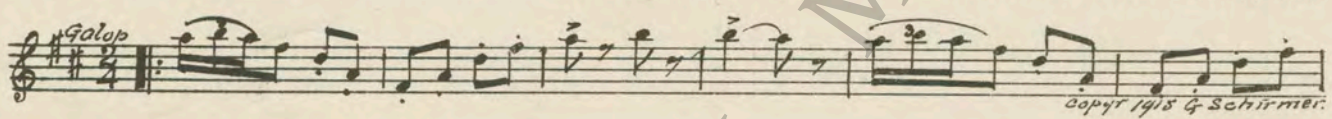
10 (Title) **WE JUST PASSED A BARBER SHOP** Tales From Vienna Woods (Strauss).....2¼ Min.



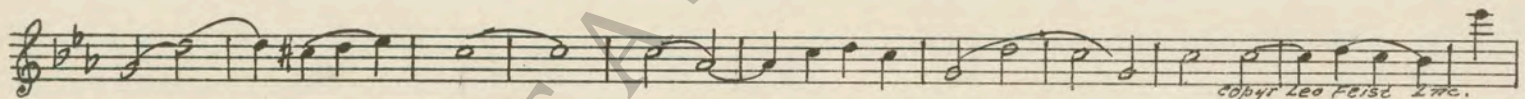
11 (Action) **GIRL IN CAR SPEAKS GERMAN** Frivolous Cupids (Schoenfeld).....4½ Min.



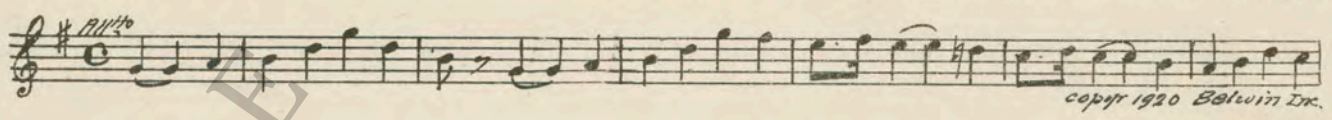
12 (Action) **AUTO DRIVES OFF** Hurry No. 3 (Langey)¼ Min.



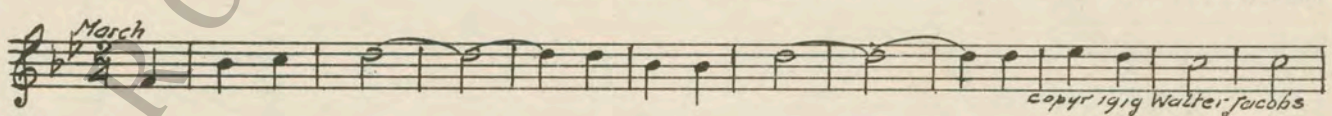
13 (Action) **AUTO STOPS AFTER TITLE: "GEH SCHNELL"** I Still Believe In You (Rich).....2¼ Min.



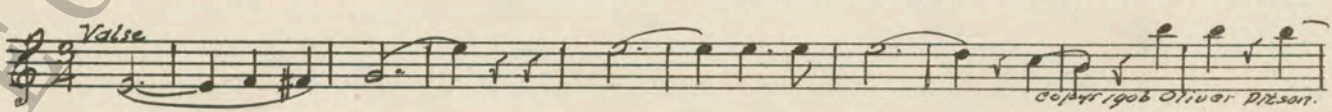
14 (Title) **SAY, IF ALL GERMANS** Spring Blossoms (Castillo)1½ Min.



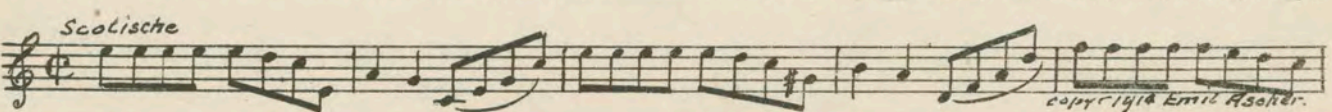
15 (Title) **WE SHALL PLAY** Near-Beer (Castillo)1½ Min.



16 (Action) **SECOND TIME BAND PLAYS** Kaufmann's Casino Tanze (Gung'l)4½ Min.



17 (Title) **WE WILL SING** Immer Noch Ein Tropfchen (Hinsch)1½ Min.



18 (Action) AFTER TOAST—GUESTS DRINKA Fairy Flirtation (Wheeler)3½ Min.

Musical notation for 'A Fairy Flirtation' in 2/4 time, marked *Mod^{te}* and *mf*. Copyright 1924 Edwin.

19 (Action) GIRL HITS SOLDIERThe Get-Away (Frey)1½ Min.

Musical notation for 'The Get-Away' in 2/4 time, marked *Galop*. Copyright 1925 Robbins Music Corp.

20 (Action) WOMAN COMING DOWNSTAIRSHeart of Mine (Smith)2¼ Min.

Musical notation for 'Heart of Mine' in 3/4 time, marked *Mod^{te}* and *mf*. Copyright 1917 Sam Fox.

21 (Title) AUCH, NOT MINNAThe Hohenfriedberger (Grosse)1½ Min.

Musical notation for 'The Hohenfriedberger' in 6/8 time, marked *Marcia*. Copyright G. Ascher.

22 (Action) FAT BOY WIPES MOUTH AND NECK WITH NAPKINI Still Believe In You (Rich)1½ Min.

Musical notation for 'I Still Believe In You' in 2/4 time, marked *Mod^{te}*. Copyright 1926 Leo Feist.

NOTE: Play once and segue.

SEGUETender Kisses (Waldteufel).....¼ Min.

Musical notation for 'Tender Kisses' in 2/4 time, marked *All^{te} mod^{te} con*. Copyright Oliver Ditson.

23 (Action) SOLDIER WALKS INTO GARDENRepeat No. 13 "I Still Believe In You".....2¼ Min.

Musical notation for 'Repeat No. 13' in 2/4 time, marked *mod^{te}*.

24 (Title) I'M SORRYTender Kisses (Waldteufel).....¼ Min.

Musical notation for 'Tender Kisses' in 3/4 time, marked *Valse*. Copyright 1907 Oliver Ditson.

NOTE: Play one strain lively.

25 (Title) THAT NIGHTSpooky Spooks (Dalton).....3½ Min.

Musical notation for 'Spooky Spooks' in 6/8 time, marked *Misterioso*. Copyright 1922 M. Witmark.

26 (Action) DOOR OPENS AND GIRL SHOWS.....Repeat No. 22 "I Still Believe In You".....1½ Min.

Musical notation for 'Repeat No. 22' in 2/4 time, marked *Mod^{te}*.

27 (Title) NEVERCrafty Spy (Borch).....1½ Min.

Musical notation for 'Crafty Spy' in 2/4 time, marked *All^{te} mod^{te}*. Copyright 1918 S. M. Berg.

28 (Title) I DON'T LIKE..... Mysterious Blues (Zamecnik).....4½ Min.

Fox-Trot

Copyright 1931 Sam Fox.

29 (Action) FADE-OUT AS SOLDIERS DRINKING WINE..... Battle Cry of Freedom from "Songs of America" (O'Hare). 1½ Min.

Mod^{to} marcato

Copyright 1913 M. Witmark.

30 (Action) AFTER WORDS AND MUSIC ON SCREEN..... Characteristic No. 1 (Roberts).....1½ Min.

All^{to} mod^{to}

Copyright 1918 Belwin Inc.

31 (Action) GIRL IN WHITE SHOWS ON SCREEN..... Repeat No. 22 "I Still Believe In You".....1½ Min.

mod^{to}

32 (Action) STONE FALLS ON BALCONY..... Hurry No. 21 (Langey).....2¼ Min.

All^{to} vivace

Copyright 1919 O. Ditson.

33 (Action) END OF FIGHT—SOLDIERS SHAKE HANDS..... The Interrupted Rendezvous (Goublier).....2¼ Min.

Mod^{to} marcia

Copyright 1911 C. Fischer.

34 (Action) SOLDIERS MARCH OUT OF ROOM..... Dramatic Tension No. 52 (Noyes).....1½ Min.

Molto mod^{to}

Copyright 1925 Hawkes.

35 (Title) IF THESE CHARGES ARE..... Repeat No. 22 "I Still Believe In You".....1½ Min.

mod^{to}

36 (Title) I JUST SAID..... Descriptive Agitato No. 18 (Schoenfeld).....1½ Min.

mod^{to}
mf

Copyright 1919 Photo Play

37 (Title) NO ONE CAN TALK..... Sons of Britain March (McNichol) (Trio Only)1½ Min.

March

Copyright 1915 C. Fischer.

THE END

Proper rest period is numbers 18 to 25 inclusive.

Country of Origin, U. S. A.

Complete orchestrations and single piano parts of each separate number contained hereon, can be purchased from CAMEO MUSIC SERVICE CORPORATION, 315-317 WEST 47TH STREET, NEW YORK CITY.