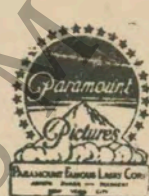


M. J. MENTZ (PATENT)
JULY 31, 1923.



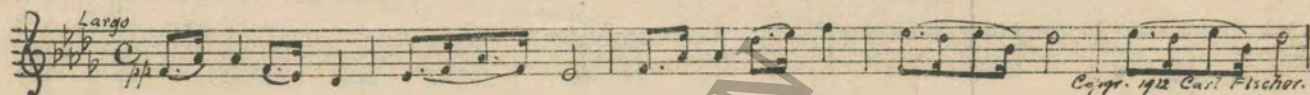
ADOLPH ZUKOR and JESSE L. LASKY
present

Zane Grey's
"UNDER THE TONTO RIM"

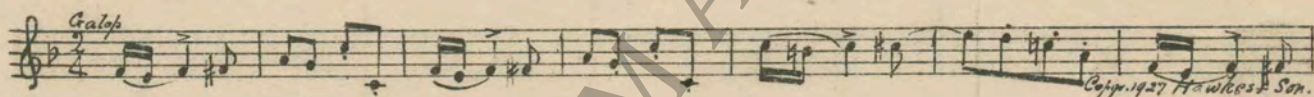
with
Richard Arlen and Mary Brian
Directed by Herman C. Raymaker
From a novel by Zane Grey
Screen play by J. Walter Ruben
B. P. Schulberg, Associate Producer
Compiled by James C. Bradford
Footage 5991 feet

A Paramount Picture

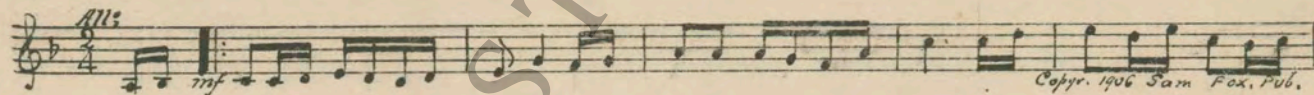
- 1 AT SCREENING Largo from New World's Symphony (Dvorak) 1 Min.



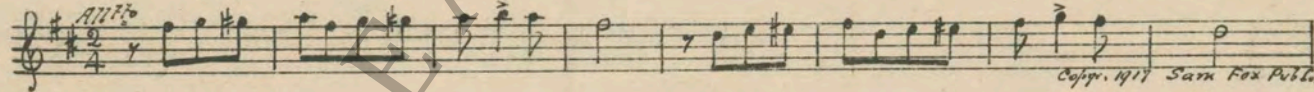
- 2 (Title) TONTO FLATS Jocosco (Finck) 3/4 Min.



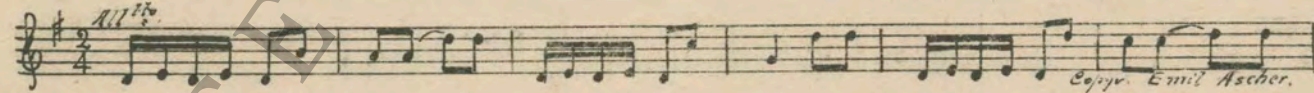
- 3 (Title) GOLD UNDER THE TONTO RIM Shenandoah (Bendel) 1/2 Min.



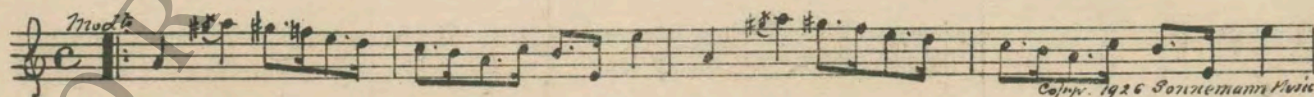
- 4 (Title) AND ALMOST OVER NIGHT Siss-Boom-Ah (Smith) 2 Min.



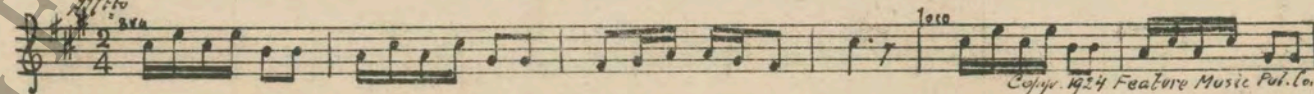
- 5 (Action) STAGE DRIVES IN Paragraphs (Fall) 1 1/2 Min.



- 6 (Title) ROPE AND BRANDING IRON The Village Cut-Up (Egener) 1 3/4 Min.



- 7 (Title) COME ON ED Rodeo Love (Raymond) 1 3/4 Min.



8 (Title) I'LL TEACH YOU TO GET IN MY WAY..... Dramatic Hurry No. 1 (Baron) 3/4 Min.

Musical notation for track 8, starting with *All.^o molto*. Copyright 1927 Irving Berlin.

9 (Action) ED DISMOUNTS AND FOLLOWS LUCY..... Polly (Zamecnik) 1 3/4 Min.

Musical notation for track 9, starting with *Mod^{to} vivo* and *Lento*. Copyright 1926 Sam Fox Pub. Co.

10 (Action) LUCY'S PARASOL CATCHES IN TREE..... THEME: Rolling Down the Rto (Ring Hager) 2 Min.

Musical notation for track 10, starting with *Valse mod^{to}*. Copyright 1926 Sam Fox Pub. Co.

11 (Action) FLASH-BACK TO BAR ROOM..... Rural Flirts (Bradford) 3/4 Min.

Musical notation for track 11, starting with *All.^o*. Copyright 1925 Belwin Inc.

12 (Title) YOU WEREN'T THINKING OF A LITTLE GAME..... The Crook (Peele) 2 1/2 Min.

Musical notation for track 12, starting with *Molto mod^{to} e misterioso*. Copyright 1927 Belwin Inc.

13 (Action) FLASH-BACK TO LUCY AND ED..... Repeat Theme No. 10 1 Min.

Musical notation for track 13, starting with *Valse mod^{to}*.

14 (Action) POKER GAME..... Rhythmic Misterioso (Damesek) 2 1/4 Min.

Musical notation for track 14, starting with *Mod^{to} dram^{atico}*. Irving Berlin Inc.

15 (Title) WELL STRANGER..... Silent Night (Rebikov) 1 Min.

Musical notation for track 15, starting with *Largo*. Copyright 1927 G. Schirmer.

16 (Action) SPRALL PULLS CARD FROM HIS VEST..... Destruction (Lowitz) 3 1/2 Min.

Musical notation for track 16, starting with *All.^o con fuoco*. Copyright 1927 G. Schirmer.

17 (Action) WOUNDED MAN REGAINS CONSCIOUSNESSLamento from Pique Dame (Tschaikowsky)2¼ Min.

And^{te} non tanto

18 (Title) GAMBLER—SHUFFLE CARDS—ONE FINGERUnfinished Symphony (Schubert)2 Min.

All^o mod^{to}

19 (Action) STREET SCENE—WILD SHOOTING BY HORSEMENA Rustic Race (Finck)1¼ Min.

All^o vivace

20 (Action) SPRALL AND GANG ENTER BACK ROOM....The Spectre (Engleman)1¾ Min.

And^{te} mosso

21 (Action) LUCY AND EDRepeat Theme No. 101¼ Min.

Valse mod^{te}

22 (Title) SPRALL'S SCHEME WAS A SIMPLE ONE....Ferocity (Carrozzini)3 Min.

All^o agitato

23 (Action) U. S. OFFICEThe Rebellion (Patou)1½ Min.

All^o agitato

24 (Title) TERRORIZED BYAgitated Appassionato (Kilenyi)1½ Min.

Appassionato

25 (Title) ROUND UP THE MINERSDramatic Allegro (Savino)2¾ Min.

All^o

26 (Action) LUCY ENTERS ROOMAdventure d'Amour (Bradford)1¾ Min.

All^o agitato

27 (Title) ED DENMEADE HAS BEEN LOOKING FOR YOUBanquos Ghost (Leuschner)2½ Min.

Mod^{to}

28 (Action) CHARACTER POKES GUNS THROUGH WINDOW L'Amour Redempteur (Gabriel Marie) 2¾ Min.

Largo

Copyright 1921 Phillips

29 (Title) IT WAS SPRALL L'Orage (Gounod) 2½ Min.

F110

Copyright 1926 Ed. B. Marko

30 (Title) SHUFFLE THOSE CARDS AGAIN Indecision (Snoek) 1¾ Min.

Andte sost.

Manus Music Co

NOTE: Catch shots ad lib.
31 (Action) ED ESCAPES FROM ROOM Mystery Hurry (Berge) 1¾ Min.

Allo molto

Copyright 1925 Robbins Music Co.

32 (Action) ED MOUNTS HORSE—RIDES OFF Galloping Furies (Rapee) 2 Min.

Presto furioso

Copyright 1926 Belwin Inc

33 (Action) WOMAN SWINGING CLUB—BUMPS RIDERS FROM HORSES Agitated Hurry (Berge) 3½ Min.

F112

Copyright 1925 Robbins Music Co.

NOTE: Shooting ad lib throughout entire sequence.
34 (Title) YOU CAN THANK ED Pandora (St. Clair) ½ Min.

Marcia

Copyright 1927 Sam Fox

35 (Action) LUCY AND ED ALONE THEME: Rolling Down the Rio (Ring-Hager) ½ Min.

Valse modto

Copyright 1926 Sam Fox Pub. Co

THE END

Country of Origin, U. S. A.

Complete orchestrations and single piano parts of each separate number contained hereon, can be purchased from CAMEO MUSIC SERVICE CORPORATION, 315-317 WEST 47TH STREET, NEW YORK CITY.