

Thematic Music  Cue Sheet

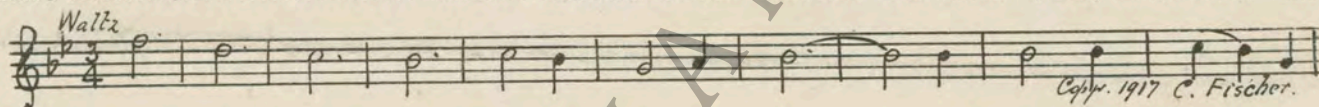
M. J. MINTZ (PATENT)
JULY 31, 1923.



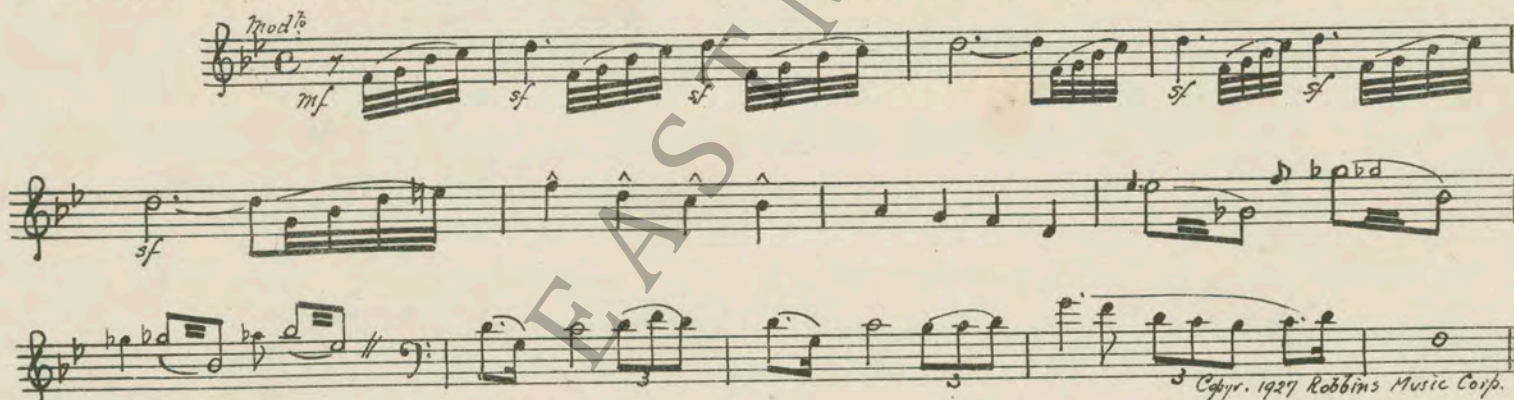
ADOLPH ZUKOR and JESSE L. LASKY
present
THOMAS MEIGHAN
in
“WE’RE ALL GAMBLERS”
with
MARIETTA MILLNER
A James Cruze Production
Production supervision by Lucien Hubbard
Based on the play “Lucky Sam McCarver”
by Sidney Howard
Screen play by Hope Loring
B. P. Schulberg, Associate Producer
Compiled by James C. Bradford
Footage 5935 feet

A Paramount Picture

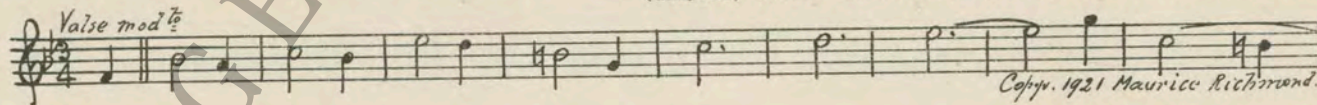
- 1 AT SCREENING Sidewalks of New York from “Old Timers” (Lake) 1½ Min.



- 2 (Action) FADE-IN PICTURE SAM THEME: Picturesque Agitato (Carbonara) ¾ Min.



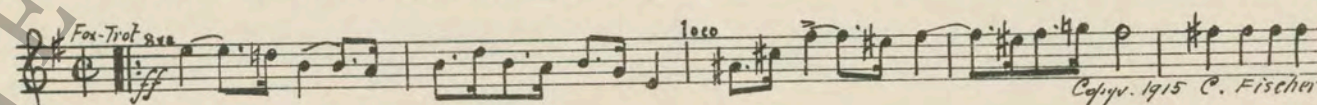
- 3 (Title) A 1907 FILLING STATION I Can't Tell Why I Love You, But I Do from “Old Timers”
(Kaplan) 1 Min.



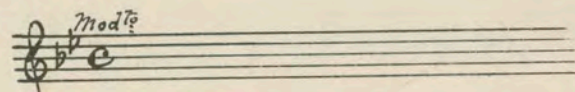
- 4 (Action) CHILD BROUGHT IN BY OFFICER Little Man (Ball) 1½ Min.



- 5 (Title) THE LUCK WHICH HAD FOLLOWED Princess Pat Fox-Trot (Herbert) ¾ Min.



- 6 (Action) SAM SITS AT PIANO Repeat Sam Theme No. 2 ½ Min.



NOTE: Play as Piano Solo.

7 (Action) STREET SCENE Jollity (Zamecnik) 2½ Min.

Musical notation for 'STREET SCENE' in G major, 2/4 time, *All^o* *mf*. Copyright 1925 Sam Fox.

8 (Action) CARLOTTA CLIMBS ON PLATFORM Repeat Sam Theme No. 2 1½ Min.

Musical notation for 'CARLOTTA CLIMBS ON PLATFORM' in G major, 2/4 time, *mod^{to}*.

9 (Action) SAM STOPS PLAYING—CLIMBS FROM PLATFORM Rural Flirts (Bradford) 1½ Min.

Musical notation for 'SAM STOPS PLAYING—CLIMBS FROM PLATFORM' in G major, 2/4 time, *All^o* *mf*. Copyright 1925 Belwin Inc.

10 (Title) AS THE CROWD Furioso No. 4 (Bergunker) 1½ Min.

Musical notation for 'AS THE CROWD' in G major, 2/4 time, *Presto*. Copyright 1927 G. Schirmer.

11 (Title) WEEKS WHEN JUST TO LIVE Poeme Symphonique (Borch) 1¾ Min.

Musical notation for 'WEEKS WHEN JUST TO LIVE' in G major, 2/4 time, *And^{te}* *pp*. Copyright 1918 Belwin, Inc.

12 (Title) MISS CARLOTTA ASHE IS HERE Melody (Franck) 2¾ Min.

Musical notation for 'MISS CARLOTTA ASHE IS HERE' in G major, 2/4 time, *And^{te}*. Copyright 1927 Emil Ascher.

13 (Action) GEORGE ENTERS Flocons de Neige (Bradford) 1 Min.

Musical notation for 'GEORGE ENTERS' in G major, 2/4 time, *Brightly*. Copyright 1925 Robbins Music Corp.

14 (Action) CLOSE-UP OF FLOWERS Heart Throbs (Herbert) ½ Min.

Musical notation for 'CLOSE-UP OF FLOWERS' in G major, 2/4 time, *Lento espress.* *mf*. Copyright 1925 C. Fischer.

15 (Title) THEY NEVER COME BACK Symphonic Incidentals No. 5 (Marquardt) 1 Min.

Musical notation for 'THEY NEVER COME BACK' in G major, 2/4 time, *Presto*. Copyright 1927 Music Buy-Bis-Cop.

16 (Title) IT'S NO USE SAM Élegie (Baron) 1¾ Min.

Musical notation for 'IT'S NO USE SAM' in G major, 2/4 time, *Lento*. Copyright 1921 Belwin.

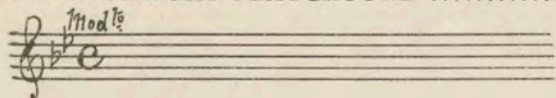
17 (Action) SAM AT DESK You're the Best Little Mother (Ball) 1¼ Min.

Musical notation for 'SAM AT DESK' in G major, 2/4 time, *Tenderly*. Copyright 1916 M. Witmark & Son.

18 (Title) SAM'S MIND TRAVELED BACK Memories (Van Alstyne) ½ Min.

Musical notation for 'SAM'S MIND TRAVELED BACK' in G major, 2/4 time, *mod^{to}*. Copyright 1915 Jerome H. Remick.

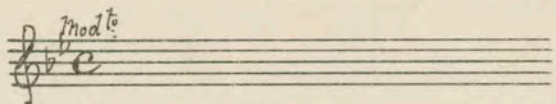
19 (Title) A NEW MIGNIGHT PLAYGROUND Repeat Sam Theme No. 2 ¾ Min.



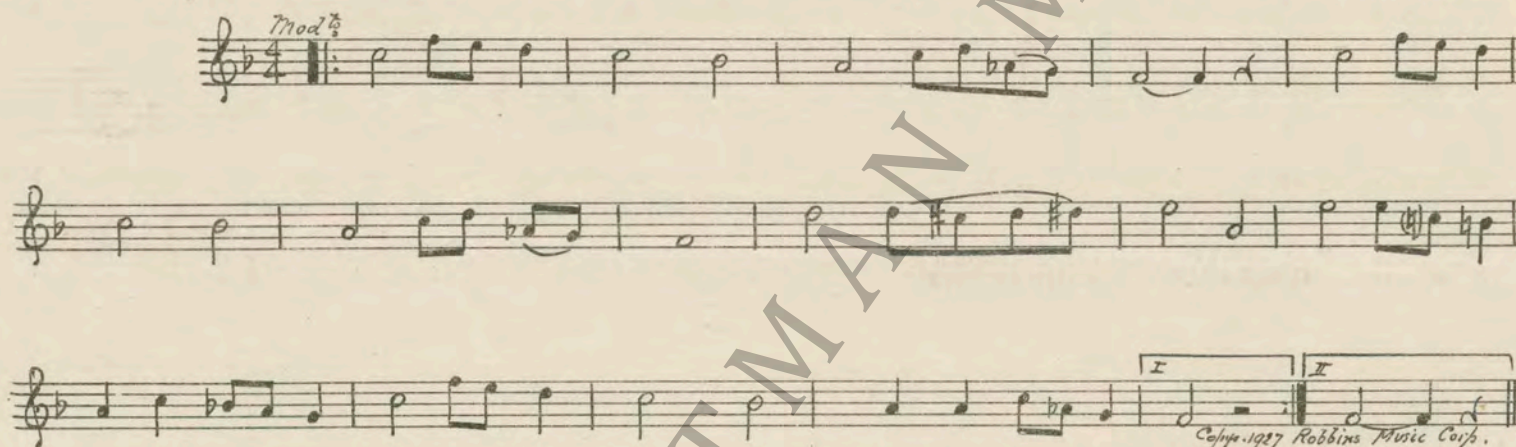
20 (Action) SAM FINISHES PLAYING NOTE: Play as Piano Solo. Stepping On the Ivories (McLaughlin) 1 Min.



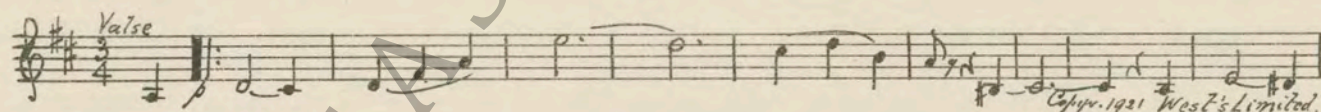
21 (Action) SAM STARTS TO PLAY PIANO AGAIN Repeat Sam Theme No. 2 1 Min.



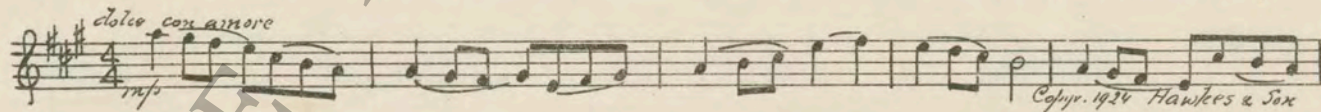
22 (Action) SAM LEAVES TABLE—ENTERS OFFICE..... NOTE: Play as Piano Solo—Orchestra pick up. CARLOTTA THEME: Smile (Heywood) 2 Min.



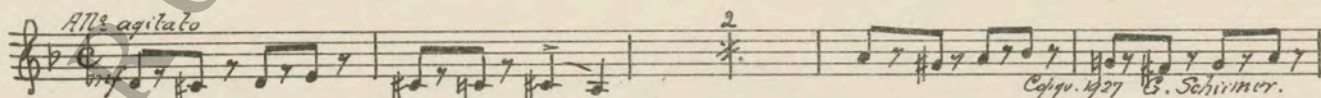
23 (Action) FLASH TO DANCE FLOOR Three o'clock In the Morning (Robledo) 1½ Min.



24 (Title) THIS JOINT HAS SURE CAUGHT ON In a Kentish Garden (Rawlinson) 1½ Min.



25 (Title) FROM THE FIRST Agitato Misterioso (Demangate) 2 Min.



26 (Title) WHAT HAVE I DONE NOW Reprcach (Zamecnik) 1½ Min.



27 (Title) THEN CAME THE NIGHT Crazy Words—Crazy Tune (Ager) 2½ Min.



23 (Action) CARLOTTA ENTERS SAM'S OFFICE I'll Always Remember You (Greer) 4¼ Min.

Espressivo

Copyright 1927 Robbins Music Corp.

29 (Title) CARLOTTA. HAVE YOU GONE MAD Recitativè Heroique (Rapee) 2¾ Min.

Masstoso

Copyright 1926 Belwin Inc.

30 (Action) INSERT-CHECKS Silent Night (Rebikov) 1½ Min.

Largo

Copyright 1917 G. Schirmer.

31 (Action) SAM JOINS FRIENDS AT TABLE Under the Moon (Snyder) ¾ Min.

Mod^{to}

Copyright 1927 Waterson, Berlin, Snyder.

32 (Action) CLOCK AT MIDNIGHT Roll on Side Drum ½ Min.

33 (Action) LIGHTS EXTINGUISHED Auld Lang Syne "from the Highlands" (Langey) ¾ Min.

Mod^{to}

Copyright 1915 G. Schirmer.

34 (Action) SAM BENDING OVER BODY OF MAN La Foret Perfide (Gabriel Marie) 3½ Min.

NOTE: Catch pistol shot as shadow appears on wall.
All^{to} misterioso

Copyright 1919 Rouart Lerolle

35 (Action) POLICE ENTER Ashes of the Past (Leroux) 2¾ Min.

Mod^{to} app.

Copyright Choudens.

36 (Title) I WAS GOING TO Remorse (Lowitz) 2 Min.

Lento

Copyright 1927 G. Schirmer.

37 (Title) THIS IS TOO DEEP FOR ME March of the Phantoms Hosts (Axt) 1 Min.

Mod^{to} ala marcia

Copyright 1927 Robbins Music Corp.

38 (Action) HAND STROKING SHIRT Repeat Carlotta Theme No. 22 ¾ Min.

Mod^{to}

THE END

Country of Origin, U. S. A.

Complete orchestrations and single piano parts of each separate number contained hereon, can be purchased from CAMEO MUSIC SERVICE CORPORATION, 315-317 WEST 47th STREET, NEW YORK CITY.