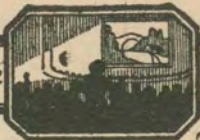


Thematic Music



Cue Sheet

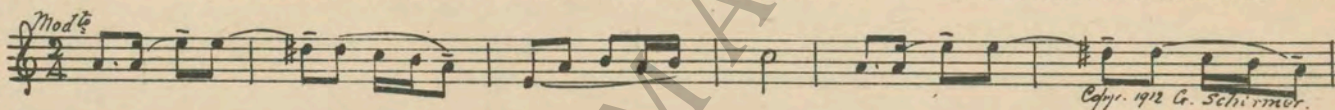
M. J. MINTZ (PATENT)  
JULY 31, 1923.

Richard A. Rowland  
presents  
**RICHARD BARTHELMESS**  
in  
An Alfred Santell Production  
**“WHEEL OF CHANCE”**  
Compiled by James C. Bradford  
A First National Picture

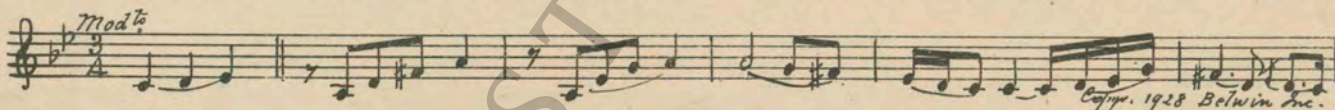
1 AT SCREENING ..... Czardas from “Ballet Russe” (Luigini) ..... 1 Min.



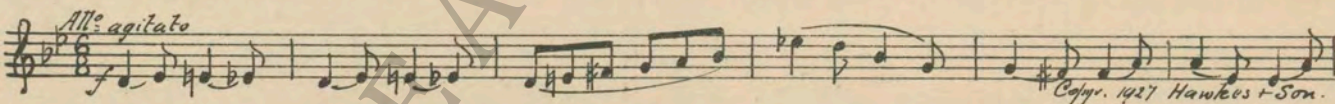
2 (Action) FADE-IN STREET SCENE ..... Cossack Lullaby (Jiranek) ..... 1½ Min.



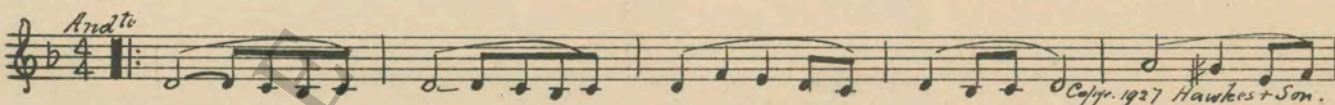
3 (Title) MOSHER ..... Hebrew Grand Fantasia (Levenson) ..... 1¼ Min.



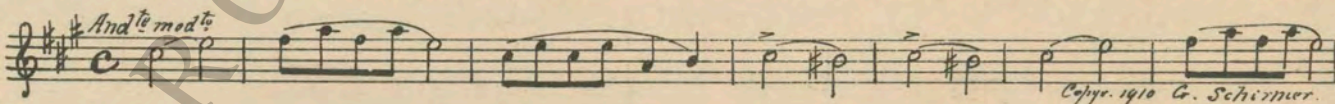
4 (Title) ANOTHER MASSACRE ..... The Rebellion (Patou) ..... 3¾ Min.



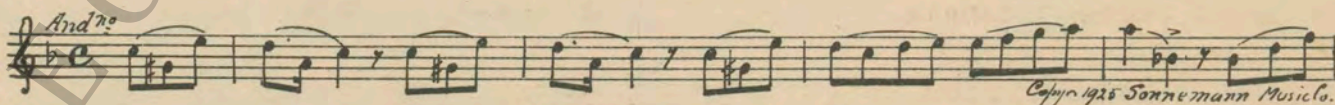
5 (Title) HANSCHKA ..... The Tragic Discovery (Patou) ..... 1¼ Min.



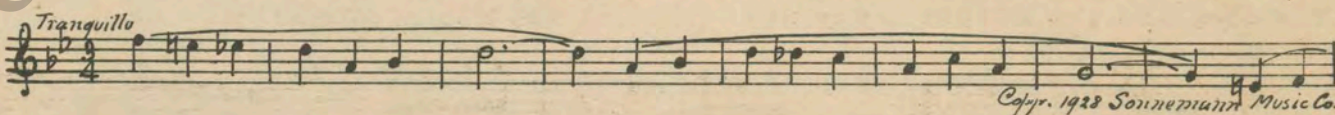
6 (Title) A CRIMSON TRAIL ..... Russian Romance (Friml) ..... 1¾ Min.



7 (Title) ADA ..... Reverie d'Amour (D'Aquin) ..... 1¾ Min.



8 (Action) NICKY ENTERS ROOM ..... Amorous Adventure (Bradford) ..... 2¼ Min.



JUDGE SWAIN ..... JOSIE THEME: Intermezzo (Granados) ..... 2 Min.

Musical notation for Judge Swain, marked *Lento*. Copyright 1916 G. Schirmer.

10 (Action) KEY PLACED IN LOCK ..... Mysterious Tension (Axt) ..... 1½ Min.

Musical notation for Key Placed in Lock, marked *All<sup>o</sup>*. Copyright 1927 Robbins Music Corp.

11 (Title) WHO ARE YOU? ..... Appassionato In A Minor (Savino) ..... 2¼ Min.

Musical notation for Who Are You?, marked *Mosso*. Copyright 1925 Robbins Music Corp.

12 (Action) NICKY LEAVES ..... Recitative and Soliloquy (Savino) ..... ¾ Min.

Musical notation for Nicky Leaves, marked *Largamente*. Copyright 1925 Robbins Music Corp.

13 (Title) NOTE: Start at second movement. SUNDAY, AND AS USUAL ..... Repeat No. 2 "Cossack Lullaby" ..... 1½ Min.

Musical notation for Sunday, And As Usual, marked *Mod<sup>to</sup>*.

14 (Action) DOORBELL RINGS—MOTHER RECEIVES TELEGRAM ..... MOTHER THEME: Little Mother (Rapee) ..... 3 Min.

Musical notation for Doorbell Rings—Mother Receives Telegram, marked *Mod<sup>to</sup>* and *p-mf*.

Musical notation for Mother Theme: Little Mother (Rapee).

Musical notation for Mother Theme: Little Mother (Rapee).

Musical notation for Mother Theme: Little Mother (Rapee). Copyright 1923 Sternman, Clay & Co.

15 (Title) IT'S ADA ..... Whimsical Charms (Fresco) ..... ½ Min.

Musical notation for It's Ada, marked *Valse Lento*. Copyright 1925 Belwin Inc.

16 (Action) INSERT—TELEGRAM ..... Repeat Josie Theme No. 9 ..... ½ Min.

Musical notation for Insert—Telegram, marked *Lento*.

17 (Action) ADA AND MOTHER IN KITCHEN ..... A Fairy Flirtation (Wheeler) ..... 2½ Min.

Musical notation for Ada and Mother in Kitchen, marked *Mod<sup>to</sup>* and *mf*. Copyright 1924 Belwin Inc.

18 (Title) **WHAT ARE YOU MAKING, MOMMA?**..... Polly (Zamecnik) .....  
*Brightly*

Musical notation for 'WHAT ARE YOU MAKING, MOMMA?' in G major, 2/4 time. The piece is marked 'Brightly' and '8...'. It features a melody with eighth and sixteenth notes, including triplets and a 'loco' section. Copyright: 1926 Sam Fox.

19 (Title) **ONLY SET THREE PLACES** ..... Repeat Josie Theme No. 9 ..... ¾ Min.

Musical notation for 'ONLY SET THREE PLACES' in G major, 4/4 time. The piece is marked 'Lento'. It consists of a single measure with a whole note chord. Copyright: 1926 Sam Fox.

20 (Title) **A FEW YEARS LATER** ..... The Captive (Savino) ..... 3¾ Min.

Musical notation for 'A FEW YEARS LATER' in G major, 2/4 time. The piece is marked 'Grave e sostenuto'. It features a slow, somber melody with eighth and sixteenth notes. Copyright: 1927 Robbins Music Corp.

21 (Action) **JASON WALKS DOWN STREET** ..... Dramatic Allegro (Savino) ..... ¾ Min.

Musical notation for 'JASON WALKS DOWN STREET' in G major, 2/4 time. The piece is marked 'Allegro'. It features a rhythmic melody with eighth and sixteenth notes. Copyright: 1923 G. Schirmer.

22 (Action) **HE ENTERS DIVE** ..... Old Timers (Lake) ..... 2½ Min.

Musical notation for 'HE ENTERS DIVE' in G major, 3/4 time. The piece is marked 'Waltz'. It features a waltz-style melody with eighth and sixteenth notes. Copyright: Carl Fischer.

23 (Action) **JASON SITS DOWN AT JOSIE'S TABLE** ..... Lonesome (Bergman) ..... 2½ Min.  
NOTE: Play as Piano Solo throughout—"P".

Musical notation for 'JASON SITS DOWN AT JOSIE'S TABLE' in G major, 2/4 time. The piece is marked 'Plaintive'. It features a slow, melancholic melody with eighth and sixteenth notes. Copyright: 1925 Robbins Music Corp.

24 (Action) **THEY LEAVE DIVE** ..... Mystere Oppressant (Gabriel Marie) ..... 4¼ Min.

Musical notation for 'THEY LEAVE DIVE' in G major, 3/4 time. The piece is marked 'Andte'. It features a slow, dramatic melody with eighth and sixteenth notes. Copyright: Manus Music Co.

25 (Title) **THEN A HAPPIER HARDER ROAD** ..... L'Amour Valsant (Kirk) ..... 1 Min.

Musical notation for 'THEN A HAPPIER HARDER ROAD' in G major, 3/4 time. The piece is marked 'Valse'. It features a waltz-style melody with eighth and sixteenth notes. Copyright: 1924 Feature Music Co.

26 (Title) **THIS AND MORE** ..... Flapperette (Greer) ..... 2½ Min.

Musical notation for 'THIS AND MORE' in G major, 2/4 time. The piece is marked 'Fox-Trot'. It features a rhythmic melody with eighth and sixteenth notes, including triplets. Copyright: 1926 Jack Mills Inc.

27 (Action) **JOSIE HEARS JASON APPROACHING** ..... Scene Pastorale (Tours) ..... 1¾ Min.

Musical notation for 'JOSIE HEARS JASON APPROACHING' in G major, 3/4 time. The piece is marked 'Andte'. It features a slow, pastoral melody with eighth and sixteenth notes. Copyright: 1927 Sam Fox.

28 (Action) **HE SEES CIGAR BUTT** ..... Dramatic Andante No. 3 (Axt) ..... 2 Min.

Musical notation for 'HE SEES CIGAR BUTT' in G major, 2/4 time. The piece is marked 'Allegro drammatico'. It features a rhythmic melody with eighth and sixteenth notes, including triplets and an '8...' section. Copyright: 1926 Robbins Music Corp.

29 (Action) **HE PLACES HAND ON JOSIE'S SHOULDER  
—SHE FALLS OVER** ..... Sicilian Vespers (Verdi) ..... ¾ Min.

Musical notation for 'HE PLACES HAND ON JOSIE'S SHOULDER' in G major, 2/4 time. The piece is marked 'Largo'. It features a slow, dramatic melody with eighth and sixteenth notes. Copyright: 1914 Ross Jungrickel.

NOTE: Play first movement only "PP" and slowly.

(Title) **WHEN THE RED LOSES, THE BLACK WINS.** Little Bluebird of My Heart (Grey) ..... 1½ Min.  
*And<sup>te</sup>*  

 Copyright 1925 Sam Fox Pub.

31 (Title) **HER NAME WAS JOSIE DREW** ..... Reproach (Zamecnik) ..... ¾ Min.  
*Mod<sup>te</sup>*  

 Copyright 1927 Sam Fox.

32 (Title) **FOR THE MURDER OF JOSIE DREW** ..... Third Misterioso a la Valse (Savino) ..... ¾ Min.  
*All<sup>te</sup> mod<sup>te</sup>*  

 Copyright 1928 Robbins Music Co.

33 (Action) **GAVEL STRIKES THREE TIMES** ..... Two Preludes—No. 1 (Chopin) ..... 1¾ Min.  
*Lento assai*

34 (Title) **THE NIGHT BEFORE** ..... Repeat Mother Theme No. 14 ..... 3 Min.  
*mod<sup>te</sup>*

35 (Title) **THIS MIGHT HAVE BEEN YOU** ..... Scenes Infernales (A) (Lake) ..... ½ Min.  
 NOTE: Play "PP" con sordini, strings only, very sweetly.  
*And<sup>te</sup>*  

 Copyright 1928 Carl Fischer.

36 (Title) **THE FINAL DAY IN COURT** ..... Elegie (Arensky) ..... 3 Min.  
*Adagio*  

 Copyright 1923 G. Schirmer.

37 (Action) **JASON LEAVES WITNESS STAND** ..... Berceuse (Jarnefelt) ..... 3 Min.  
*And<sup>te</sup>*  

 Copyright 1915 Carl Fischer.

38 (Title) **WE SUBMIT CASE WITHOUT ARGUMENT** ... Dramatic Appeal (Jores) ..... 2¼ Min.  
 NOTE: Play "PP" con sordini, strings only, very slowly.  
*And<sup>te</sup>*  

 Copyright 1926 Sonnemann Music Co.

39 (Title) **WE, THE DEFENDANT, NOT GUILTY** ..... Melody of Peace (Martin) ..... 1½ Min.  
*And<sup>te</sup>*  

 Copyright 1920 Carl Fischer.

40 (Action) **JASON THANKS NICKY** ..... Repeat Mother Theme No. 14 ..... ¾ Min.  
*mod<sup>te</sup>*

THE END

Printed in U. S. A.

Complete orchestrations and single piano parts of each separate number contained hereon, can be purchased from CAMEO MUSIC SERVICE CORPORATION, 315-317 WEST 9TH STREET, NEW YORK CITY.