

M. J. MINTZ (PATENT)
JULY 31, 1923.



THE WHITE SISTER



Starring
LILLIAN GISH
A HENRY KING PRODUCTION

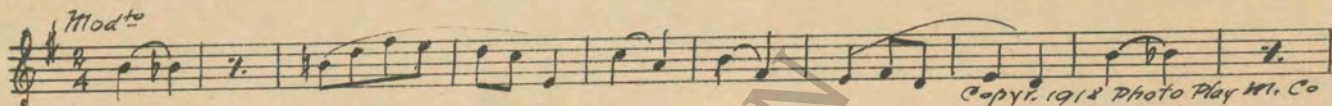
With
RONALD COLMAN
Based on the novel by F. Marion Crawford

Directed by Henry King
Produced by Inspiration Pictures, Inc.

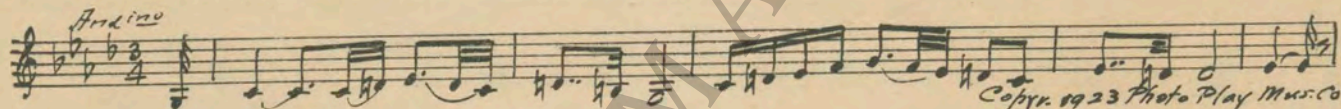
Compiled by Ernst Luz
A METRO-GOLDWYN-MAYER PICTURE

Length of film 11 reels (9950 feet)

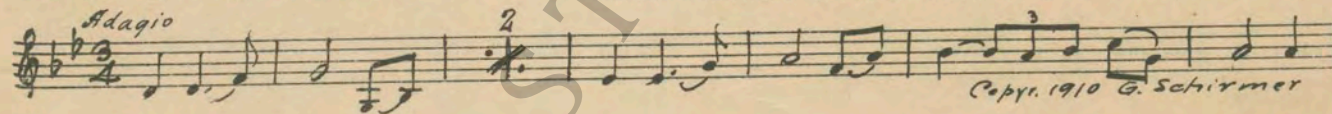
1. AT SCREENING Six Strokes on Chimes, then At Twilight (Golden).....1 Min.



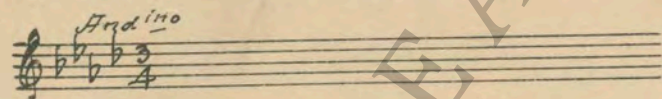
2. (Title) ITALY Incid. Symphony No. 15 (Thomas)1¼ Min.



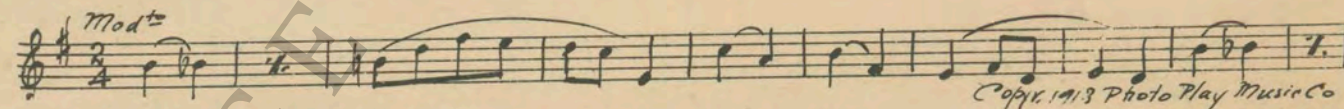
3. (Action) PALACE INTERIOR SCENE Adagio Pathetique (Godard) 1 Min.



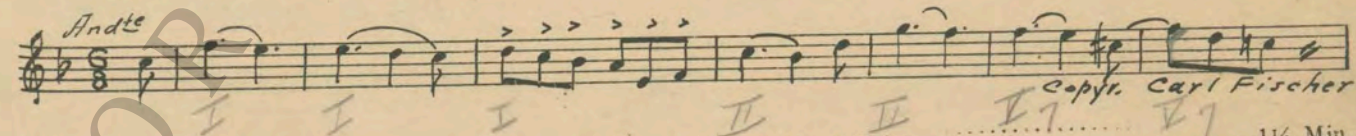
4. (Action) END OF MAN'S PRAYER Repeat No. 2 "Incid. Symphony No. 15"..... 2 Min.



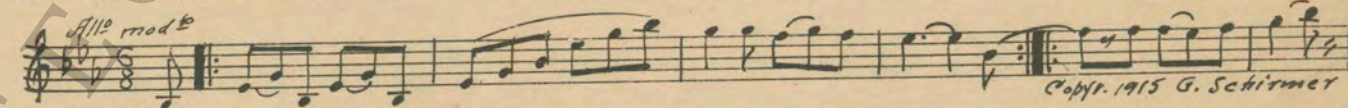
5. (Action) TWO LADIES COME DOWN PALACE STAIRS. At Twilight (Golden)2 Min.



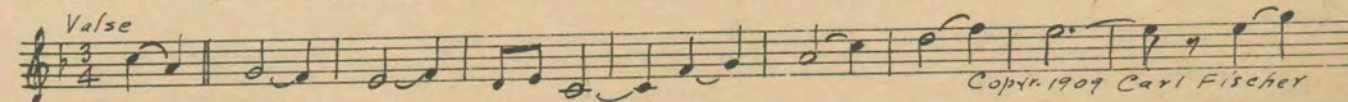
6. (Action) LOVERS DISTURBED WHEN MAN SLAMS DOOR Angel's Serenade (Braga)3 Min.



7. (Title) RIDING TO HOUNDS Allegro Vivace No. 1 (Langey)1¼ Min.



8. (Title) ANGELA MYSTERIOUSLY LEAD Ciribiribin (Pestalozza)1¼ Min.



9. (Action) END OF DANCE—MUSICIANS STOP PLAYING Margarita "From Italy" (Langev) 1¼ Min.

All^o

Copyr. 1911 G. Schirmer

10. (Action) END OF BOY'S SONG Repeat No. 7 "Allegro Vivace No. 1" ½ Min.

All^o mod^{to}

11. (Action) FADE-BACK TO LOVERS IN GARDEN O Sole Mio! (de Curtis) (Accordeon-Organ) ¾ Min.

Valse

Copyr. 1921 Carl Fischer

12. (Action) LOVERS WITH BACKS TO CAMERA AT LAKE Allegro Vivace No. 1 (Langev) 1 Min.

All^o mod^{to}

Copyr. 1915 G. Schirmer

13. (Action) STOP ABRUPT AT ACCIDENT Adagio Pathetique (Godard) 3 Min.

Adagio

Copyr. 1910 G. Schirmer

14. (Action) WOMAN IN RIDING HABIT CLOSES PORTIERES BACK SCREEN Dram. Andante No. 32 (Berge) 2 Min.

Mod^{to}

Copyr. 1916 S.M. Berg

15. (Action) WOMAN IN RIDING CLOTHES BURNS PAPERS Novelette (Glazounow) ¾ Min.

All^o

Copyr. 1922 Carl Fischer

16. (Title) WHAT DOES HE MEAN Pensees d'Amour (Bucalossi) ¾ Min.

Mod^{to}

Copyr. 1907 Boosey & Co

17. (Title) IN A SECTION OF THE CITY Bridal Paths (Langford) 1 Min.

All^o

Copyr. 1923 Music Buyers Co

18. (Action) AFTER MAN'S HAND KNOCKS ON DOOR...At Twilight (Golden)2 Min.

Musical notation for item 18, marked *Mod^{to}*. Copyright 1918 Photo Play Music Co.

19. (Action) PLAY ONCE AND SEGUEO Sole Mio!-(de Curtis)2¼ Min.

Musical notation for item 19, marked *Valse*. Copyright 1921 Carl Fischer.

20. (Title) DAWN AND EACH PRECIOUS MOMENT.....Dramatic Andante No. 32 (Berge)1¼ Min.

Musical notation for item 20, marked *Mod^{to}*. Copyright 1916 S. M. Berg.

21. (Action) CARRIAGE TURNS AROUND IN STREET....Repeat No. 18 "At Twilight"1 Min.

Musical notation for item 21, marked *Mod^{to}*.

22. (Action) CARRIAGE STOPS—WOMAN GETS OUT.....Incid. Symphony No. 15 (Thomas)1¼ Min.

Musical notation for item 22, marked *And^{te}*. Copyright 1923 Photo Play Music Co.

23. (Title) PROFESSOR SERERIIn Flowerland (Golden)1 Min.

Musical notation for item 23, marked *Valse mod^{to}*. Copyright 1919 Photo Play Music Co.

24. (Title) PEACEFULLY SLEEPINGItalians In Algeria (Rossini)1½ Min.

Musical notation for item 24, marked *And^{te}*. Copyright 1913 Carl Fischer.

25. (Title) NOTE: Play introduction and Allegro. AND ANGELA EVER DREAMINGRepeat No. 23 "In Flowerland".....3½ Min.

Musical notation for item 25, marked *Valse mod^{to}*.

26. (Action) AFTER BOY IS SPANKEDO Sole Mio! (de Curtis) (Wire-Strings)2 Min.

Musical notation for item 26, marked *Valse*. Copyright 1921 Carl Fischer.

27. (Action) LILLIAN GISH LEAVES WINDOWRepentance (Kempinski)1½ Min.

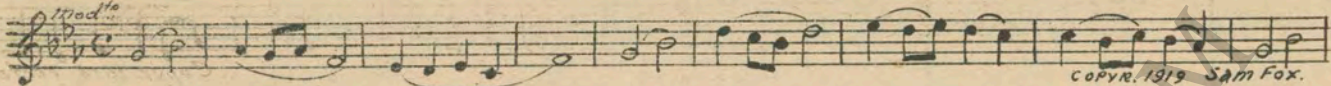
Musical notation for item 27, marked *Adagio*.

Two staves of musical notation, likely a continuation of item 27.

Third staff of musical notation, likely a continuation of item 27. Copyright 1923 Music Buyers Co.

Handwritten note: *faint stop*

28. (Action) STOP SHORT AS LILLIAN GISH FAINTS,....Dead Silence¼ Min.
 29. (Title) THE HOSPITAL OFScented Violets (Reynard)3 Min.

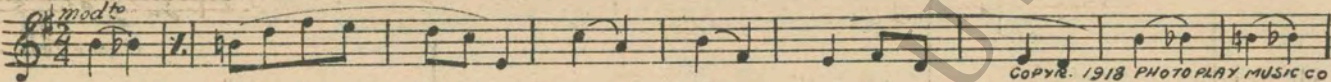
mod^{to}

 COPYR. 1919 SAM FOX.

30. (Title) MEANWHILE THE TREMENDOUS TASK....Incid. Symphony No. 15 (Thomas)¾ Min.

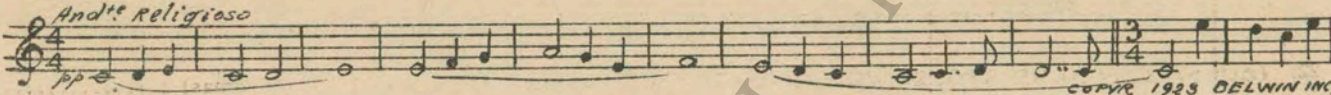
Andantino

 COPYR. 1923 PHOTOPLAY MUSIC CO


31. (Action) LILLIAN GISH SITS UP IN BEDAt Twilight (Golden)2¼ Min.

mod^{to}

 COPYR. 1918 PHOTOPLAY MUSIC CO

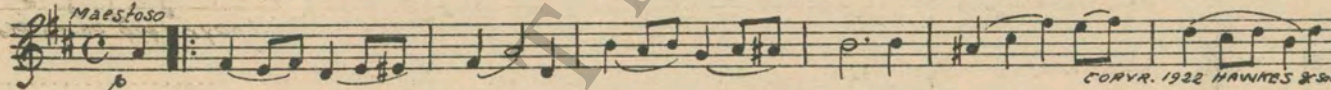
32. (Title) THE FLOOD OF TEARSA Cloister Episode (Baron)1½ Min

And^{te} Religioso

 COPYR. 1925 BELWIN INC.

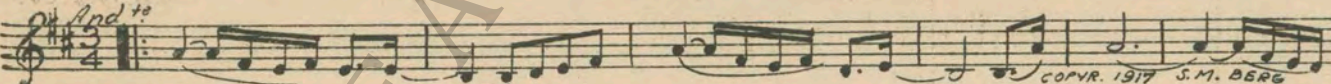
33. (Title) TWO YEARS OF DILIGENT SEARCH.....Danse Oriental (Lubomirsky)¾ Min

All^{to} 8^{va} lower

 COPYR. 1912 SCHIRMER

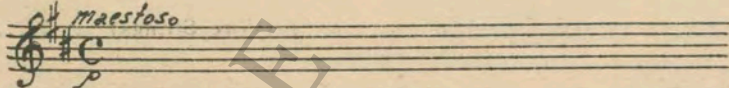
34. (Title) MEANWHILE ANGELA SERVEDThe Immortal Choir (Lotter)½ Min.

Maestoso

 COPYR. 1922 HAWKES & SON

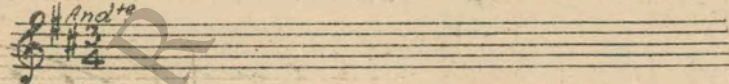
35. (Action) FADE-OUT OF LILLIAN GISH AT WINDOW..Rest (Borch)1 Min.

And^{to}

 COPYR. 1917 S.M. BERG

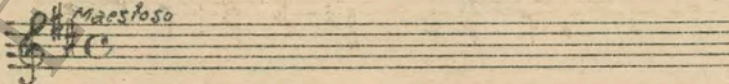
36. (Title) BEFORE TAKING HER-FINAL VOWS.....Repeat No. 34 "Immortal Choir"1 Min.

Maestoso


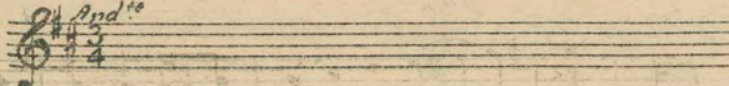
37. (Action) FADE-OUT OF LONG SHOT OF CONVENT GARDENSRepeat No. 35 "Rest"1½ Min.

And^{te}


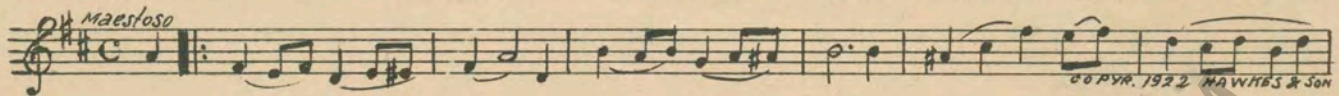
38. (Title) WHILE GIOVANNI STRUGGLED FORRepeat No. 34 "Immortal Choir"1¼ Min.

Maestoso


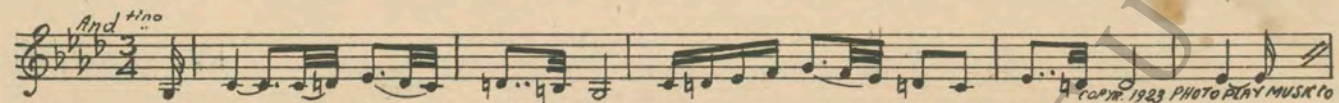
39. (Title) AT THE END OF THE DESERT TRAILRepeat No. 35 "Rest".....¼ Min.

And^{te}


40. (Title) CLOTHED IN BRIDALThe Immortal Choir (Lotter)1 Min.

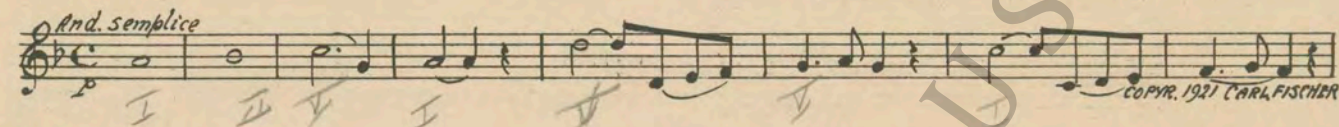


41. (Action) SHIP DECK SCENEIncid. Symphony No. 15 (Thomas)¼ Min.

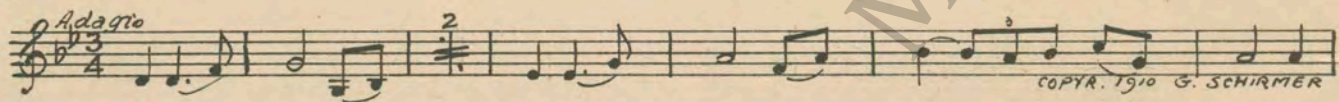


42. (Title) WEDDING BELLSChurch Bells by Organ or Drummer¼ Min.

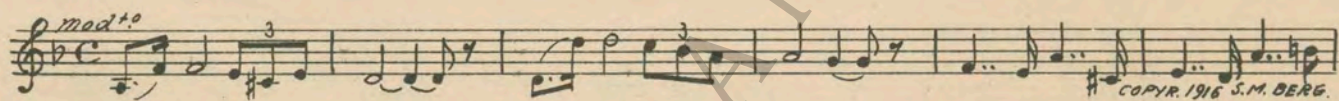
43. (Action) ONE SCENEAve Maria (Gounod)¾ Min.



44. (Action) PLAY ONCE AND SEGUEAdagio Pathetique (Godard)3 Min.

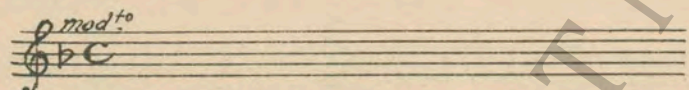


45. (Action) BATTLESHIP ON SCREEN SECOND TIME..Dramatic Andante No. 32 (Berge)3 Min.

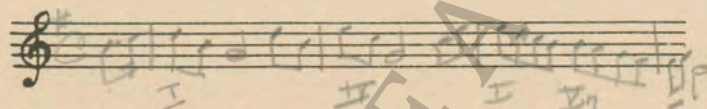


46. (Title) MOTHER, I CAMEPlay "Serenade Eternal"—Schroeder (Harms).....1¼ Min.

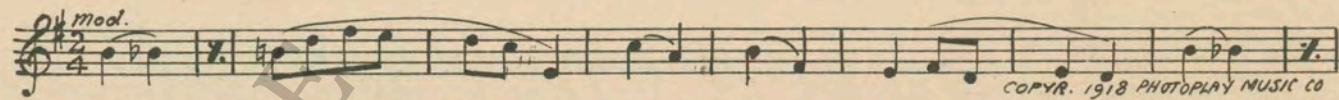
47. (Action) CARRIAGE SEEN ON SCREENRepeat No. 45 "Dram. Andante No. 32"½ Min.



48. (Action) INTERIOR SCENES AFTER CARRIAGE DRIVES OFFRepeat No. 46 "Serenade Eternal"1½ Min

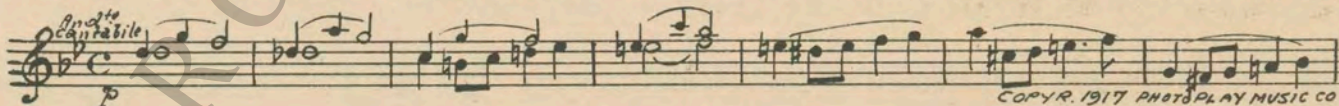


49. (Action) LILLIAN GISH ON SCREEN RECOGNIZED BY SEVERIAt Twilight (Golden)1 Min.

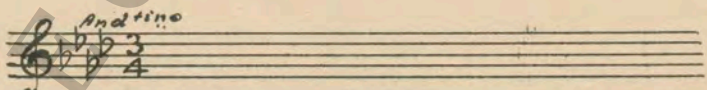


50. (Action) INTERRUPT WITH TYMPANY ROLL AT KISSTympany Roll¼ Min.

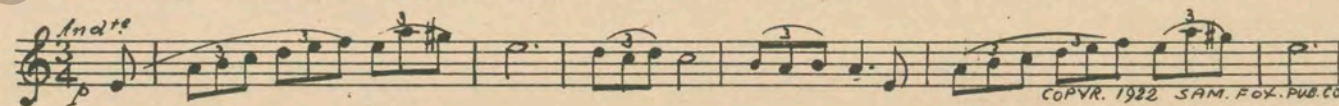
51. (Action) LILLIAN GISH IN HALL—ENTERS ROOM..Pathetique Suite (Luz)5¼ Min.



52. (Title) FOLLOWING A LULLRepeat No. 41 "Incid. Symphony No. 15"2½ Min.

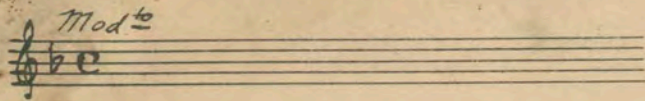


53. (Action) CAPTAIN SEVERI LOCKS DOORA Gruesome Tale (Zamecnik)4 Min.

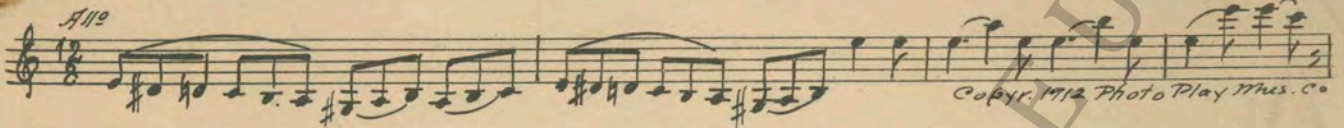


54 - Do you think it costs me - 45 I came only to warn you

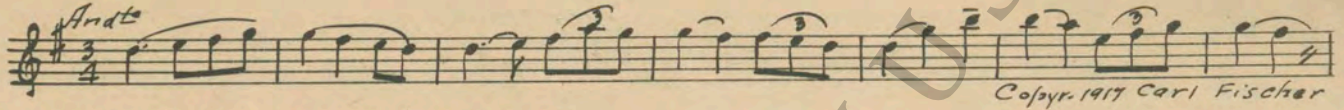
54. (Title) DO YOU THINK IT COSTS ME NOTHING... Repeat No. 45 "Dram. Andante No. 32"1¼ Min



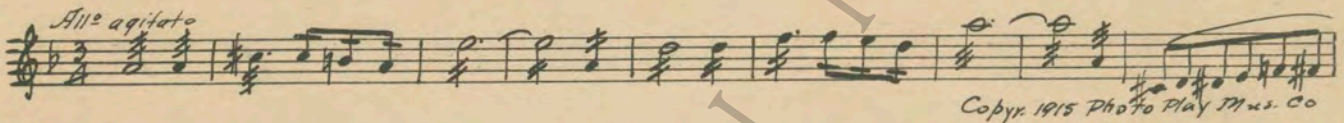
55. (Title) I CAME ONLY TO WARN YOU Incid. Symphony No. 8 (Kempinski)1½ Min



56. (Action) PRIEST SEEN IN STREET SCENE Andante Religioso (Goltermann)3 Min.



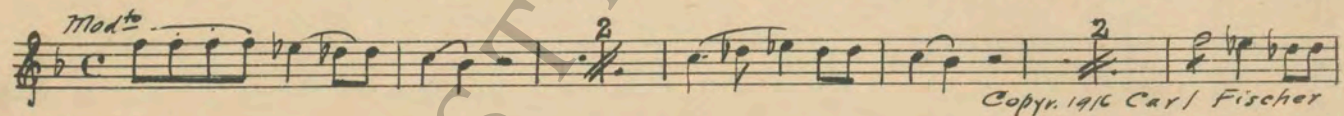
57. (Action) LILLIAN GISH LEAVING OBSERVATORY
MAKES SIGN OF THE CROSS..... A. B. C. Dram. Set No. 9—A1 (Luz)1 Min.



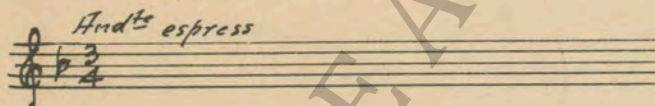
58. (Action) STOP AS CARRIAGE FALLS OVER BANK..... A. B. C. Dram. Set No. 9—C3 (Luz)3 Min.



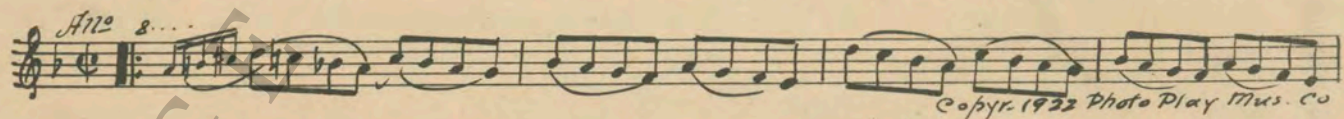
59. (Action) LILLIAN GISH AND PRIEST SEEN ON
SCREEN Finale from "Symphony in F Minor" (Tschaikowsky)3 Min.



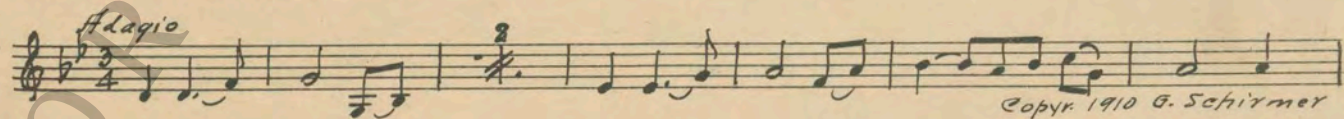
60. (Action) CLOSE-UP OF LILLIAN GISH KNEELING
AT ALTER Repeat No. 58 "A. B. C. Dram. Set No. 9—C3"1½ Min.



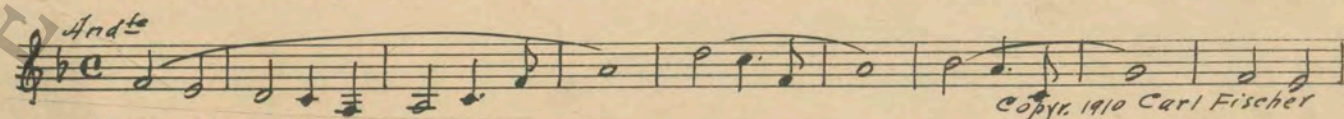
61. (Action) LILLIAN GISH RESTS SISTER'S HEAD IN
HER LAP Incid. Symphony No. 3 (Kempinski)2¾ Min.



62. (Action) CAPTAN SEVERI LYING IN WATER Adagio Pathetique (Godard)1½ Min.



63. (Title) DAWN FOUND VESUVIUS Reve Angelique (Rubenstem)1¾ Min.



NOTE: Church Bells at end.

THE END

Country of Origin, U. S. A.

Complete orchestrations and single piano parts of each separate number contained hereon, can be purchased from CAMEO MUSIC SERVICE CORPORATION, 315-317 WEST 47TH STREET, NEW YORK CITY.