

M. J. MINTZ (PATENT)  
JULY 31, 1923.

C. C. BURR  
presents  
**JOHNNY HINES**  
in  
**“THE WRIGHT IDEA”**  
Story by Jack Townley  
Directed by Charles Hines  
Compiled by James C. Bradford  
**A FIRST NATIONAL PICTURE**

1. AT SCREENING ..... Aurora (Von der Mehden) ..... 1½ Min.

*All.<sup>o</sup> scherzando*  
 *mf*  
COPYR. 1910 CARL FISCHER

2. (Action) INSERT—“WRIGHT’S MAGIC INK” ..... JOHNNY THEME: Somebody (Little) ..... ¾ Min.

*All.<sup>o</sup>*  
 *mf*  
COPYR. 1923 Robbins Music Co.

3. (Action) SCENE BETWEEN TWO MEN IN ALLEY..... Sarabande Perpetuelle (Bradford) ..... ¾ Min.

*All.<sup>o</sup>*  
 *mf*  
COPYR. 1928 CARL FISCHER

4. (Title) ESCORT ME TO MY CAR ..... Valse Elise (Friml) ..... 1 Min.

*Valse*  
 *mf*  
COPYR. 1928 EMIL FISCHER

5. (Action) START OFF IN HIGH POWERED AUTO..... Rural Flirts (Bradford) ..... 2¼ Min.

*All.<sup>o</sup>*  
 *mf*  
COPYR. 1925. BELWIN IM

6. (Title) AS A REWARD ..... Pastime (Clutsam) ..... 2 Min.

Musical notation for item 6: Treble clef, key signature of one sharp (F#), 2/4 time signature. Tempo marking: *All<sup>to</sup>*. Copyright: 1928 HAWKES & SON.

7. (Action) STARTS OFF IN CAR AGAIN ..... I'm Sitting On Top of the World (Henderson) ..... 1/2 Min.

Musical notation for item 7: Treble clef, key signature of one flat (Bb), 2/4 time signature. Tempo marking: *loco*. Copyright: 1925 LEO FBIST.

8. (Action) HE SEES GIRL ..... The Butterflies' Coquetry (Voelker) ..... 1 Min.

Musical notation for item 8: Treble clef, key signature of one sharp (F#), 2/4 time signature. Tempo marking: *All<sup>o</sup> Graz*. Copyright: 1903 JOHN CHURCH.

9. (Action) OFFICER APPEARS ..... Repeat Johnny Theme No. 2 ..... 3 1/2 Min.

Musical notation for item 9: Treble clef, key signature of one flat (Bb), 2/4 time signature. Tempo marking: *All<sup>o</sup>*.

10. (Action) HELEN MISSES BONDS ..... Intermezzo (Arensky) ..... 3 1/2 Min.

Musical notation for item 10: Treble clef, key signature of one flat (Bb), 2/4 time signature. Tempo marking: *Presto*. Copyright: 1916 C. FISCHER.

11. (Action) HELEN ENTERS DETECTIVE'S OFFICE ..... DETECTIVE THEME: Funny Faces (Ring-Hager) ..... 3/4 Min.

Musical notation for item 11: Treble clef, key signature of one flat (Bb), 2/4 time signature. Tempo marking: *mod.*. Copyright: 1926 SAM FOX PUB.

12. (Action) JOHNNY ENTERS OFFICE ..... Repeat Johnny Theme No. 2 ..... 2 Min.

Musical notation for item 12: Treble clef, key signature of one flat (Bb), 2/4 time signature. Tempo marking: *All<sup>o</sup>*.

13. (Action) BOSS OPENS DOOR ..... Spring Cleaning (Bradford) ..... 1 1/2 Min.

Musical notation for item 13: Treble clef, key signature of one sharp (F#), 2/4 time signature. Tempo marking: *All<sup>o</sup> non troppo*. Copyright: 1928 CARL FISCHER.

14. (Action) JOHNNY LEAVES OFFICE ..... Repeat Johnny Theme No. 2 ..... 3 Min.

Musical notation for item 14: Treble clef, key signature of one flat (Bb), 2/4 time signature. Tempo marking: *All<sup>o</sup>*.

15. (Title) GEE! I'M GLAD I RUN INTO YOU ..... HELEN THEME: Two Imps (Warren) ..... 1 Min.

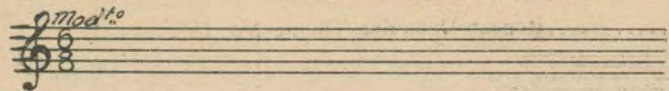
Musical notation for item 15: Treble clef, key signature of one flat (Bb), 2/4 time signature. Tempo marking: *Mod<sup>to</sup>*.

Musical notation for item 15 (continued): Treble clef, key signature of one flat (Bb), 2/4 time signature. Tempo marking: *8va*.

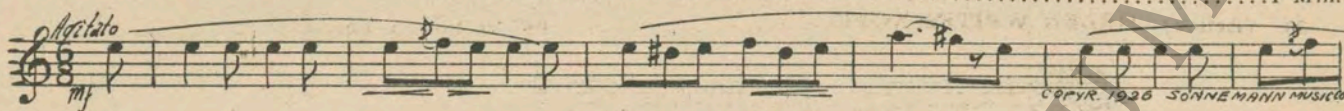
Musical notation for item 15 (continued): Treble clef, key signature of one flat (Bb), 2/4 time signature. Tempo marking: *8va*.

Musical notation for item 15 (continued): Treble clef, key signature of one flat (Bb), 2/4 time signature. Tempo marking: *8va*. Copyright: 1928 RENICK CORP.

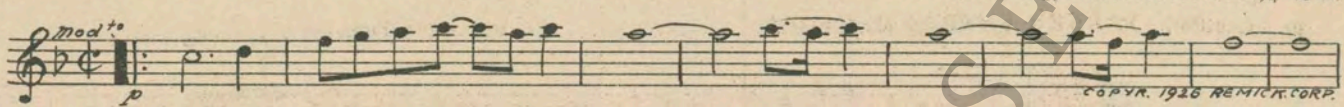
16. (Title) HE'S GOT A SATCHEL FULL OF INK ..... Repeat Detective Theme No. 11 ..... 1/2 Min.



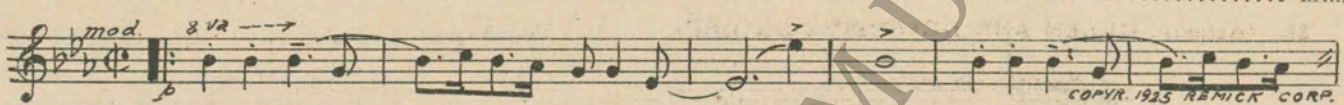
17. (Title) FOUR O'CLOCK ..... Uneasiness (Mendelssohn) ..... 1 Min.



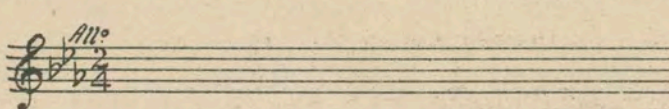
18. (Action) JOHNNY ENTERS OFFICE ..... Breezin' Along With the Breeze (Whiting) ..... 2 3/4 Min.



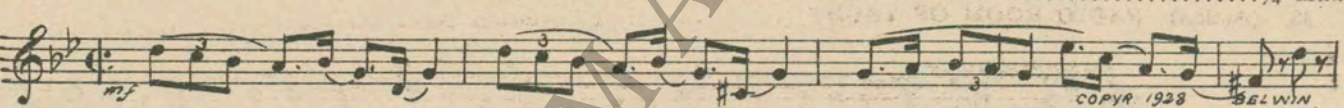
19. (Action) TWO MEN ENTER ..... Got No Time (Kahn) ..... 1 Min.



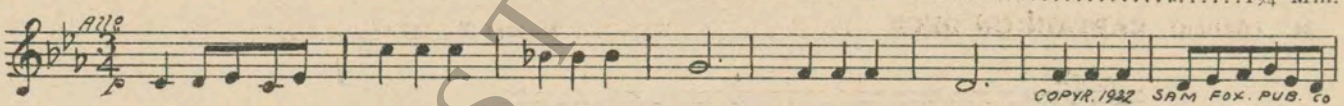
20. (Action) THEY ENTER PRIVATE OFFICE ..... Repeat Johnny Theme No. 2 ..... 3 1/2 Min.



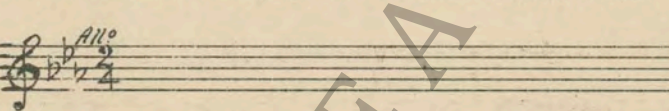
21. (Action) THEY ALL LEAVE OFFICE ..... A Rube Festival (Peele) ..... 3/4 Min.



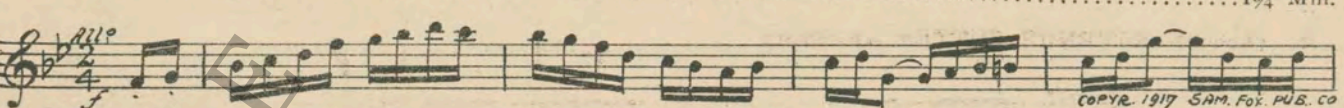
22. (Action) WATER FRONT SCENE ..... Conspiracy (Zamecnik) ..... 1 3/4 Min.



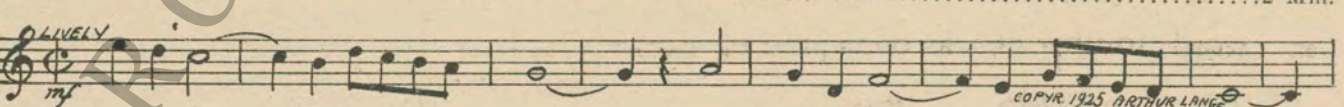
23. (Title) ONCE I GET THESE BLOTTER MEN ..... Repeat Johnny Theme No. 2 ..... 1/2 Min.



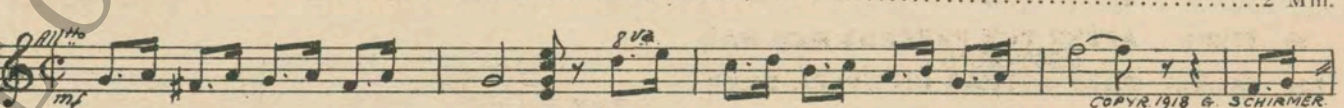
24. (Title) THE YACHTING PART WAS ..... Marionette (Arndt) ..... 1 3/4 Min.



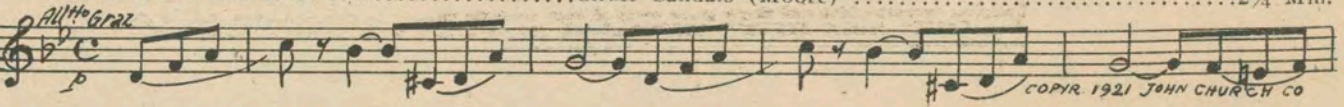
25. (Title) ONE OF THE MYSTERIES OF THE SEA ..... Mal de Mer (Lange) ..... 2 Min.



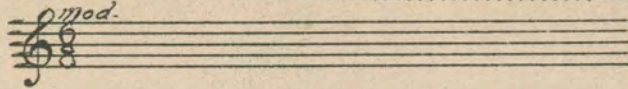
26. (Action) JOHNNY JOINS HELEN AND MAN ..... Chianti (Friml) ..... 2 Min.



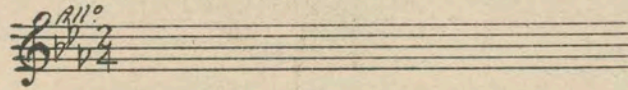
27. (Action) TWO BUSINESS MEN DISCUSSING PURCHASE OF INK ..... Silver Sandals (Moore) ..... 2 1/4 Min.



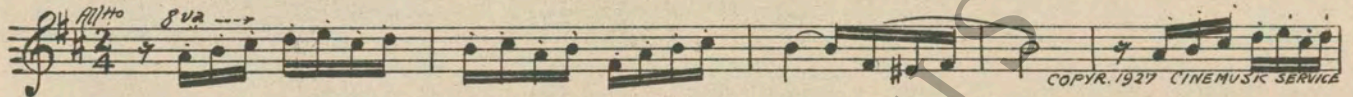
28. (Action) **DETECTIVE APPEARS** ..... Repeat Detective Theme No. 11 ..... 1¼ Min.



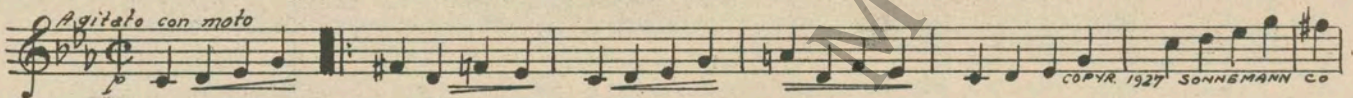
29. (Action) **HELEN WRITES NOTE** ..... Repeat Johnny Theme No. 2 ..... 2 Min.



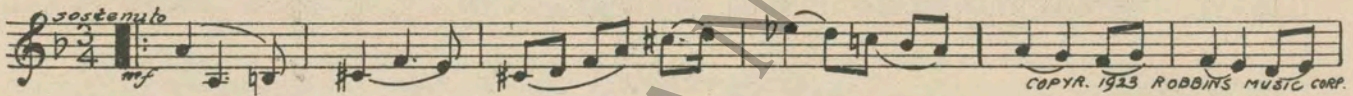
30. (Action) **PARKER ENTERS MEETING** ..... En Visite (McDonald) ..... 2½ Min.



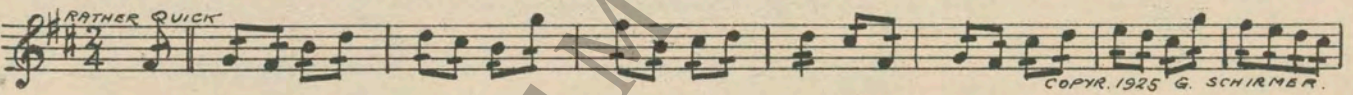
31. (Action) **HELEN AND DETECTIVE ON DECK** ..... Warriors Bold (Joels) ..... 1 Min.



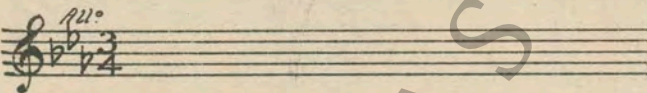
32. (Action) **HELEN ENTERS ROOM** ..... Dramatic Andante No. 1 (Rapee-Axt) ..... 1 Min.



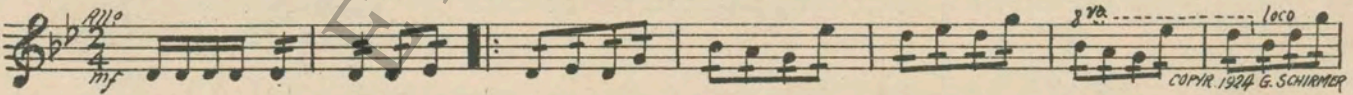
33. (Action) **RADIO ROOM OF YACHT** ..... Restless Bows (Srawley) ..... 1½ Min.



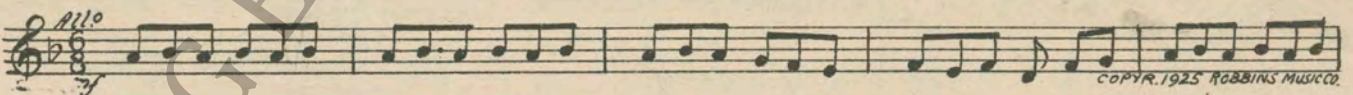
34. (Action) **CAPTAIN ON DECK** ..... Repeat No. 22 "Conspiracy" ..... 1½ Min.



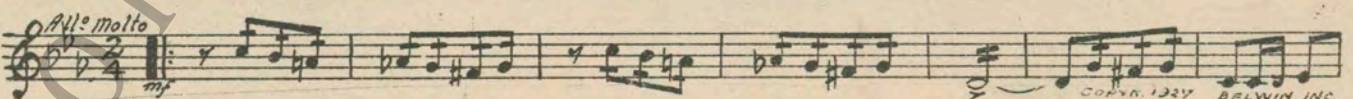
35. (Action) **FLASH-BACK TO CABIN** ..... Moto Perpetuo (Weiss) ..... 2 Min.



36. (Action) **REVENUE CUTTER APPEARS** ..... Emotional Agitato (Savino) ..... 3 Min.



37. (Action) **JOHNNY CLIMBS OVER SIDE OF YACHT** ..... Animated Agitato (Levy) ..... 1½ Min.



38. (Title) **AFTER THE REVENUE MEN HAD RESTORED** ..... Repeat Johnny Theme No. 2 ..... 1¼ Min.

39. (Action) **THEY APPEAR ON UPPER DECK** ..... Repeat Helen Theme No. 15 ..... ½ Min.

THE END

Printed in U. S. A.

Complete orchestrations and single piano parts of each separate number contained hereon, can be purchased from CAMEO MUSIC SERVICE CORPORATION, 315-317 WEST 47TH STREET, NEW YORK CITY.