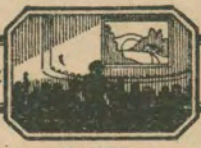


Thematic Music  Cue Sheet

M. J. MINTZ (PATENT)
JULY 31, 1923.



JOHN GILBERT
and
GRETA GARBO
in
LOVE

AN EDMUND GOULDING PRODUCTION

From the novel "Anna Karenina"

By Lyof. N. Tolstoi

Continuity by Frances Marion

Directed by Edmund Goulding

Compiled by Ernst Luz

A METRO-GOLDWYN-MAYER PICTURE

Length of film 8 reels (7300 feet)

Maximum projection time 1 hour, 20 minutes

- 1 AT SCREENING That Melody of Love (Donaldson) 1 Min.

Moderato

Copyright 1927 Leo Feist

- 2 (Title) IMPERIAL RUSSIA The Sleigh Ride "From a Russian Village" (Marsden) 1½ Min.

Copyright 1926 J. H. Larway

- 3 (Action) SECOND SLEIGH STOPS ON SCREEN Incid. Symphony No. 7 (Kempinski) 1¼ Min.

Agitato vivace

Copyright 1923 Photo Play Music Co

- 4 (Action) FADE-OUT AS SLEIGH DRIVES OFF AND INTO SECOND SCENE Albumblatt (Hilse) ½ Min.

Andte cantabile

Copyright 1922 Photo Play Music Co

- 5 (Action) GILBERT AND GIRL ENTER INN—GILBERT TAKES OFF COAT Chant Russe (Lalo) 1½ Min.

Chento

Copyright 1927 Photo Play Music Co

NOTE: Play introduction and 1st strain.

- 6 (Action) FADE-OUT TO EXTERIOR AFTER GIRL TAKES HAND FROM SCARF AROUND NECK Wind Effect by Drummer ¼ Min.
- 7 (Action) ONE EXTERIOR SCENE Chant Russe (Lalo) ½ Min.

Musical notation for Chant Russe (Lalo) in G major, 3/4 time, marked *Lento*. The melody is written on a single staff.

Copyr. 1927 Photo Play Music Co

- 8 (Action) GILBERT TELLS MAID PLAYING GUITAR AND SINGING TO LEAVE Repeat No. 4 "Albumblatt" 1 Min.

Musical notation for Albumblatt in G major, common time, marked *And^{te} cantabile*. The notation shows a few notes on a single staff.

- 9 (Action) GILBERT AND GIRL COME FROM DINING ROOM—STAND AT FOOT OF STAIRS... That Melody of Love (Donaldson) ¾ Min.

Musical notation for That Melody of Love (Donaldson) in G major, 3/4 time, marked *Valse lento*. The notation consists of three staves with various musical markings like triplets and first/second endings.

Copyr. 1927 Leo Feist

- 10 (Title) NOW, MARFA Repeat No. 5 "Chant Russe" 2¼ Min.

Musical notation for Chant Russe in G major, 3/4 time, marked *Lento*. The notation shows a few notes on a single staff.

- 11 (Action) GILBERT EMBRACES GIRL Nature's Awakening (Kempinski) 1 Min.

Musical notation for Nature's Awakening (Kempinski) in G major, common time, marked *Adagio*. The notation is written on a single staff.

Copyr. 1922 Photo Play Music Co

- 12 (Title) ON PARADE The Cossack Battalion (Schoenfeld) 1¼ Min.

Musical notation for The Cossack Battalion (Schoenfeld) in G major, common time, marked *Marziale*. The notation is written on a single staff.

Copyr. 1925 Music Buyer's Corp

- 13 (Title) EASTER NIGHT Chimes—Key of A ¼ Min.
- 14 (Action) ONE EXTERIOR CHURCH BELL SCENE Russian Rural Scape (Friml) ¾ Min.

Musical notation for Russian Rural Scape (Friml) in G major, common time, marked *And^{te} religioso*. The notation is written on a single staff.

Copyr. 1918 G. Schirmer

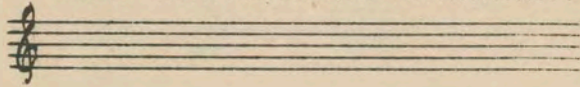
- 15 (Action) GILBERT SEES ANNA KARENINA IN CHURCH Repeat No. 7 "Chant Russe" (Violin Solo) 1 Min.

Musical notation for Chant Russe (Violin Solo) in G major, 3/4 time, marked *Lento*. The notation shows a few notes on a single staff.

- 16 (Action) PRIEST MAKES SIGN OF THE CROSS Repeat No. 14 "Russian Rural Scene" 1 Min.

Musical notation for Russian Rural Scene in G major, common time, marked *And^{te} religioso*. The notation shows a few notes on a single staff.

17 (Action) CHURCH BELLS AFTER TITLE: "IF YOU KNEW" Chimes—Key of A ¼ Min.



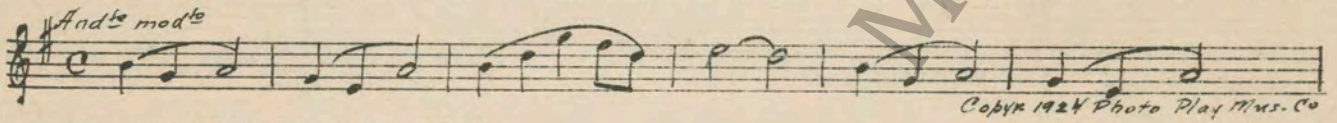
18 (Title) CHRIST HAS RISEN Spring Fancies (Marquardt) 2½ Min.



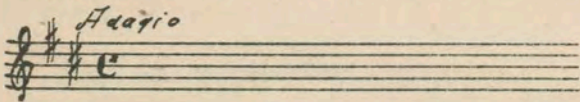
19 (Action) GILBERT IN CLOSE-UP STOPS IN DOOR BEFORE KARENINA GOES THROUGH DOOR Chant Russe (Lalo) ¼ Min.



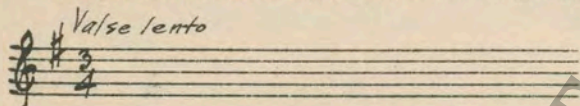
20 (Action) GILBERT TURNS FROM DOOR Baby from "Love Tales" (Schertzinger) 2 Min.



21 (Action) KARENINA OPENS DOOR AND CANDLE GOES OUT Repeat No. 11 "Nature's Awakening" ¾ Min.



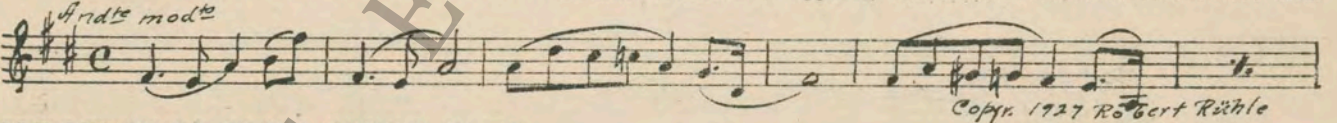
22 (Action) ANNA KARENINA COMES FROM ROOM AFTER LIGHTING CANDLE Repeat No. 9 "Melody of Love" ¾ Min.



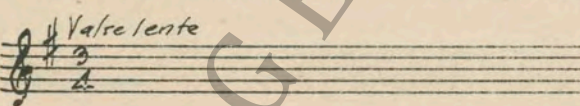
23 (Action) GILBERT KISSES KARENINA'S HAND AFTER TITLE: "WE SHALL BE FRIENDS" Russian Nights (Tobani) (From No. 1) 1½ Min.



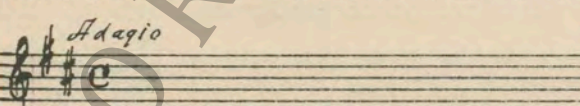
24 (Action) DANCERS STOP IN LONG SHOT AFTER HUSBAND TALKS TO BUTLER Andante Amoroso (Huppertz) 1 Min.



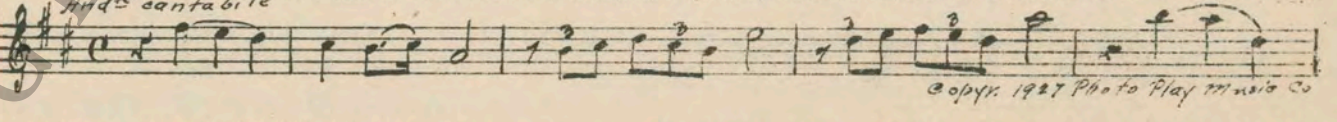
25 (Action) FADE-OUT AS KARENINA DRINKS GLASS OF WINE Repeat No. 9 "Melody of Love" ½ Min.



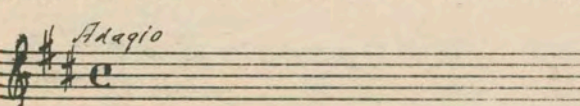
26 (Action) KARENINA OPENS DOOR Repeat No. 11 "Nature's Awakening" 1 Min.



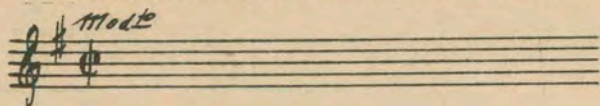
27 (Action) KARENINA WALKS OUT OF BEDROOM AFTER TITLE: "WHY DID YOU DISTURB ME" Albumblatt (Hilse) 1 Min.



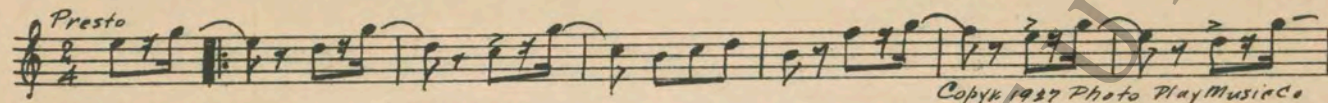
28 (Action) KARENINA OPENS BEDROOM DOOR Repeat No. 11 "Nature's Awakening" ½ Min.



29 (Action) KARENINA WALKS FROM BEDROOM TO TABLE Repeat No. 1 "Melody of Love" (Last 4 bars)..... 1/4 Min.

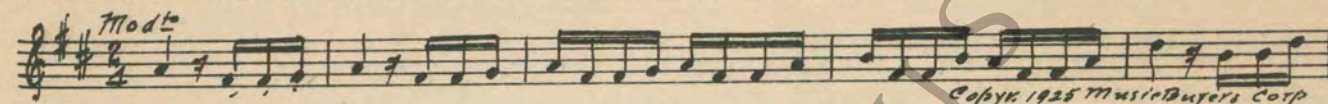


30 (Action) KARENINA TEARS LETTER Incid. Symphony No. 37 (Hintz) 1 1/4 Min.

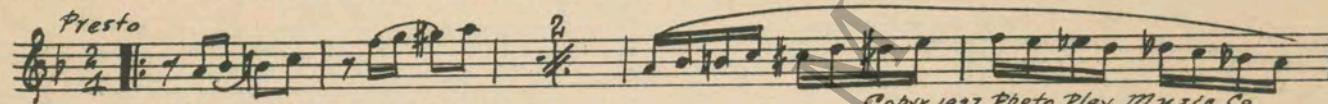


31 (Action) GILBERT AND KARENINA STOP UNDER TREE Short Horn Call—2 bars 1/4 Min.

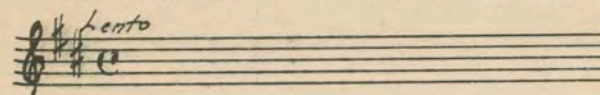
32 (Action) ONE SCENE TO SCREEN Spring Fancies (Marquardt) 3/4 Min.



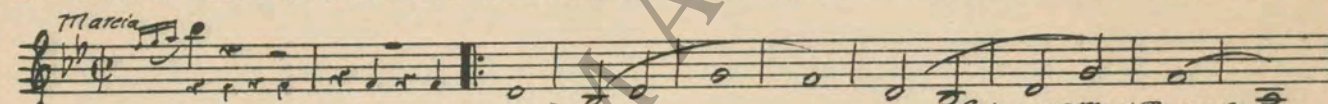
33 (Action) GILBERT DISMOUNTS Incid. Symphony No. 37 (Hintz) (Trio) 1/2 Min.



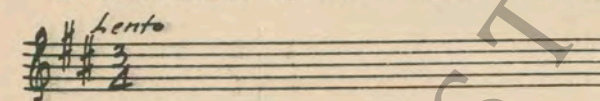
34 (Action) GILBERT AND KARENINA SHOW UNDER TREE Repeat No. 5 "Chant Russe" 1/4 Min.



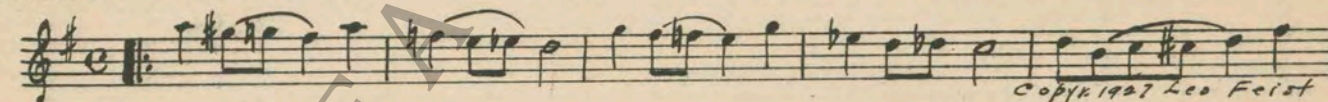
35 (Action) FADE-OUT OF GILBERT AND KARENINA... The Cossack Batallion (Schoenfeld) (Trio) 1 Min.



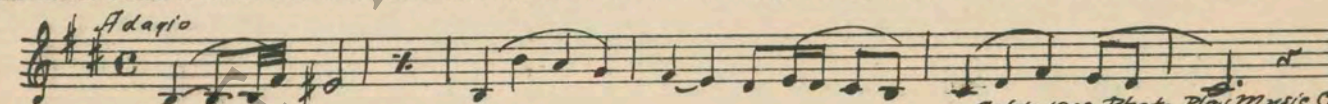
36 (Action) FLASH-BACK TO GILBERT AND KARENINA AFTER TITLE: "CURIOUS" Repeat No. 7 "Chant Russe" 1/4 Min.



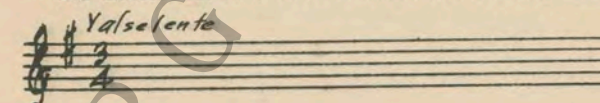
37 (Action) MOON SCENE That Melody of Love (Donaldson) 1/4 Min.



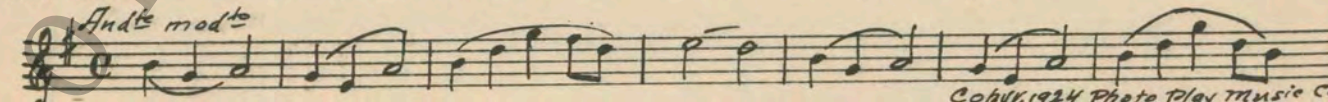
38 (Action) LOVERS KISS NOTE: Play letter (A) once—(B) 8 bars. Nature's Awakening (Kempinski) 1/2 Min.



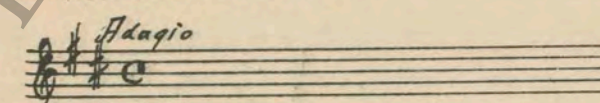
39 (Action) DOOR OPENS AFTER KARENINA IS SEEN AT MIRROR Repeat No. 9 "Melody of Love" 1/4 Min.



40 (Title) YOU HAVEN'T HEARD ONE THING I SAID..Baby from "Love Tales" (Schertzinger) 1/2 Min.



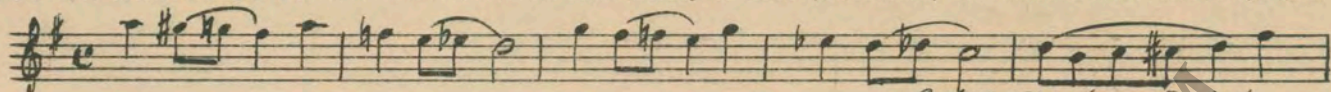
41 (Action) CHILD WALKS FROM MOTHER Repeat No. 38 "Nature's Awakening" 1/2 Min.



42 (Action) FADE-OUT OF LETTER ON SCREEN Chant Russe (Lalo) 1 Min.

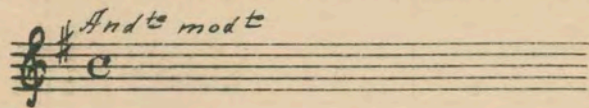


43 (Title) BUT WE CANNOT GO ON That Melody of Love (Donaldson) 1/2 Min.

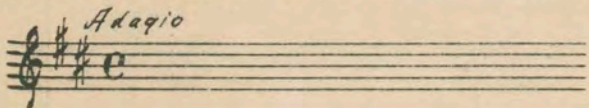


Copyr. 1927 Leo Feist

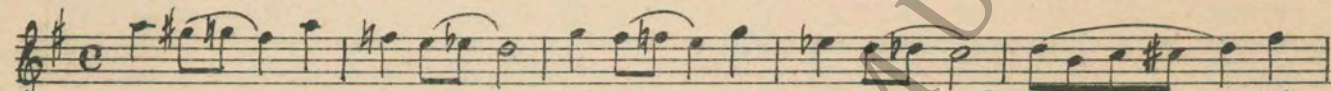
44 (Action) LOVERS IN EMBRACE Repeat No. 40 "Baby" 1/4 Min.



45 (Action) CHILD WALKS FROM WINDOW Repeat No. 38 "Nature's Awakening" 1/2 Min.

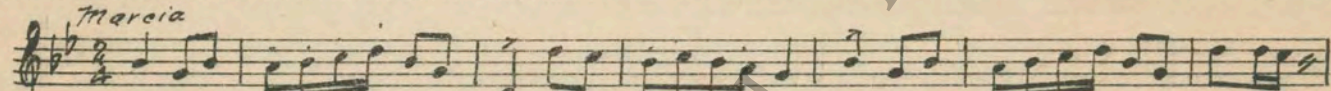


46 (Action) KARENINA SITS DOWN ON ARM OF SOFA... That Melody of Love (Donaldson) 1 Min.

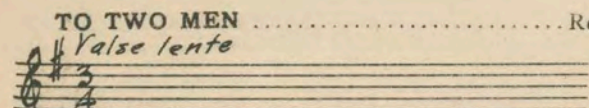


Copyr. 1927 Leo Feist

47 (Title) IN ST. PETERSBURG Russianna (Schubert) 1 Min.

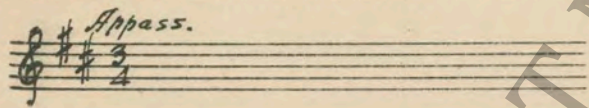


48 (Action) GILBERT WALKS PAST GRANDSTAND TO TWO MEN Repeat No. 9 "Melody of Love" 1 1/4 Min.



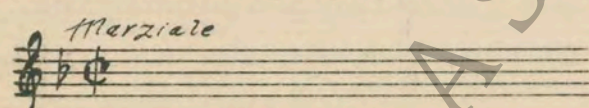
Copyr. 1923 S. F. Music Co

49 (Title) ALEXIA, I HAVE BEEN WORRIED Repeat No. 42 "Chant Russe" 3/4 Min.

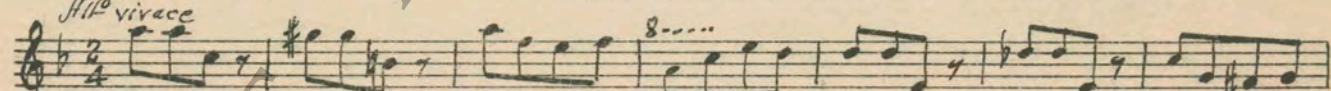


50 (Action) BIG BELL AFTER TITLE: "GOOD LUCK".... Big Bell Effect 1/4 Min.

51 (Action) ONE BELL RINGING SCENE Repeat No. 12 "Cossack Battalion" 1 Min.

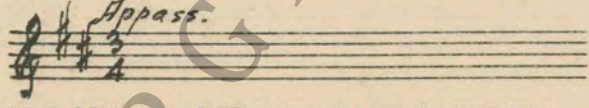


52 (Action) FLAG DROPPED FOR START OF RACE AFTER HORSES ARE SEEN LINED UP-- SECOND FLAG SCENE Curassier Attaque (Eilenberg) 2 Min.

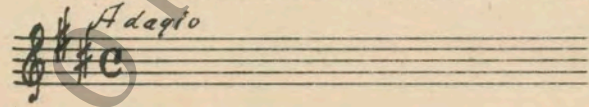


Copyr. Carl Fischer

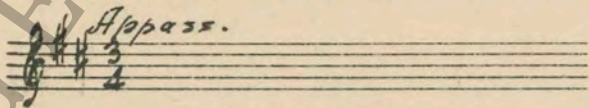
53 (Action) GILBERT'S HORSE FALLS AT STONE WALL. Repeat No. 42 "Chant Russe" 3/4 Min.



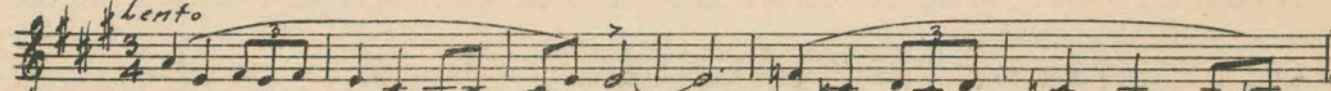
54 (Action) FADE-OUT AS HUSBAND LEADS KARENINA FROM GRANDSTAND Repeat No. 38 "Nature's Awakening" 1/2 Min.



55 (Title) WHY DO YOU TORTURE ME Repeat No. 42 "Chant Russe" 1 Min.



56 (Action) HUSBAND PULLS DOWN CURTAIN OF CARRIAGE In Flowerland (Golden) 1 Min.



Copyr. 1919 Photo Play Music Co

NOTE: Play introduction and 1st strain of Waltz.

57 (Title) SHOCKING ACCIDENT Hobes Awakening (Kempinski) ¾ Min.

Musical notation for item 57, featuring a treble clef, key signature of one sharp (F#), and tempo marking *Mod^o cantabile*. The notation includes a series of eighth and sixteenth notes. Copyright notice: *Copyr. 1920 Photo Play Music Co*

58 (Action) FADE-OUT OF HUSBAND'S BACK Repeat No. 19 "Chant Russe" ¾ Min.

Musical notation for item 58, featuring a treble clef, key signature of one sharp (F#), and tempo marking *Lento*. The notation shows a few notes on a staff.

59 (Action) GILBERT WALKS TO DOOR Repeat No. 42 "Chant Russe" 1¼ Min.

Musical notation for item 59, featuring a treble clef, key signature of one sharp (F#), and tempo marking *Appass.*. The notation shows a few notes on a staff.

60 (Action) KARENINA PUTS HAND TO HEAD—
LOVERS EMBRACE Nature's Awakening (Kempinski) 1 Min.

Musical notation for item 60, featuring a treble clef, key signature of one sharp (F#), and tempo marking *Adagio*. The notation includes a series of notes with some rests. Copyright notice: *Copyr. 1922 Photo Play Music Co*

61 (Action) HUSBAND ENTERS ROOM TO LOVERS..... Luz Symphonic Color Classit No. 1 (Marquardt) (GREEN)..1¼ Min.

Musical notation for item 61, featuring a treble clef, key signature of one sharp (F#), and tempo marking *Adagio*. The notation includes a series of notes with some rests. Copyright notice: *Copyr. 1925 Music Buyers Corp*

62 (Action) HUSBAND LEAVES ROOM Repeat No. 46 "Melody of Love" ½ Min.

Musical notation for item 62, featuring a treble clef, key signature of one sharp (F#), and tempo marking *Lento*. The notation shows a few notes on a staff.

63 (Title) AFTER THREE MONTHS Chant Russe (Lalo) 1 Min.

Musical notation for item 63, featuring a treble clef, key signature of one sharp (F#), and tempo marking *Lento*. The notation includes a series of notes with some rests. Copyright notice: *Copyr. 1927 Photo Play Mus. Co*

64 (Action) CHILDREN WITH PRIEST SHOW ON
NOTE: Play two bars of introduction, and cut to two bars after letter (C).

Musical notation for item 64, featuring a treble clef, key signature of one sharp (F#), and tempo marking *And^{te} mod^{te}*. The notation shows a few notes on a staff. Copyright notice: *Copyr. 1927 Photo Play Mus. Co*

65 (Title) GIVE ME A KISS Chant Russe (Lalo) 1¼ Min.

Musical notation for item 65, featuring a treble clef, key signature of one sharp (F#), and tempo marking *Lento*. The notation includes a series of notes with some rests. Copyright notice: *Copyr. 1927 Photo Play Music Co*

66 (Action) KARENINA LIES DOWN ON PILLOW Repeat No. 46 "Melody of Love" 1¼ Min.

Musical notation for item 66, featuring a treble clef, key signature of one sharp (F#), and tempo marking *Lento*. The notation shows a few notes on a staff.

67 (Title) ST. PETERSBURG Repeat No. 27 "Albumblatt" 1 Min.

Musical notation for item 67, featuring a treble clef, key signature of one sharp (F#), and tempo marking *And^{te} cantabile*. The notation shows a few notes on a staff.

68 (Action) KARENINA BEGINS TO GO UPSTAIRS..... Repeat No. 60 "Nature's Awakening" ¾ Min.

Musical notation for item 68, featuring a treble clef, key signature of one sharp (F#), and tempo marking *Adagio*. The notation shows a few notes on a staff.

69 (Action) SERVANT WALKS FROM HUSBAND Repentance (Kempinski) 1¼ Min.

Handwritten: *Adagio*
Musical notation for item 69. Copyright: 1923 Music Buyers Corp

70 (Action) MOTHER SEES CHILD IN BED Repeat No. 40 "Baby" 1¾ Min.

Handwritten: *Andte modto*
Musical notation for item 70

71 (Action) MOTHER AND CHILD OUT OF EMBRACE
AFTER TITLE: "THEY TOLD ME YOU
WERE DEAD" Capriccio (May) 1 Min.

Handwritten: *Allte con moto*
Musical notation for item 71. Copyright: 1927 Robert Rühle

72 (Action) KARENINA TAKES TOWEL FROM
CABINET IN BATHROOM Luz Symphonic Color Classic No. 1 (Marquardt) (YELLOW) .. 1 Min.

Handwritten: *Allte simplice*
Musical notation for item 72. Copyright: 1925 Music Buyers Corp

73 (Action) MOTHER PICKS UP BOY'S CLOTHING
AFTER LEAVING BATHROOM Repeat No. 60 "Nature's Awakening" 1 Min.

Handwritten: *Adagio*
Musical notation for item 73

74 (Action) MAID IN BATHROOM WASHING BOY Repeat No. 69 "Repentance" 1½ Min.

Handwritten: *Adagio*
Musical notation for item 74

75 (Title) BETTER YOU WERE DEAD Repeat No. 60 "Nature's Awakening" 1½ Min.

Handwritten: *Adagio*
Musical notation for item 75

76 (Title) TOMORROW, THE GRAND DUKE Repeat No. 42 "Chant Russe" 1 Min.

Handwritten: *Appass*
Musical notation for item 76

77 (Action) FADE-OUT AS KARENINA IS SEEN TEARING
CAP On the Volga (Krein) 1¼ Min.

Handwritten: *Andte*
Musical notation for item 77. Copyright: 1916 Hawkes & Son

78 (Action) DUKE SHAKES HEAD "YES" SECOND
TIME Symphonic Incidentals No. 11 (Marquardt) 2½ Min.

Handwritten: *Andino serioso*
Musical notation for item 78. Copyright: 1927 Music Buyers Corp

79 (Action) GILBERT LOWERS HEAD AFTER TITLE:
"YOU SEE WE LOVE YOU TOO" Repeat No. 65 "Chant Russe" 1¼ Min.

Handwritten: *Lento*
Musical notation for item 79

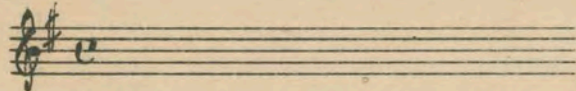
80 (Title) DID YOU GO TO THE CLUB Repeat No. 46 "Melody of Love" 1 Min.

Handwritten: *Lento*
Musical notation for item 80

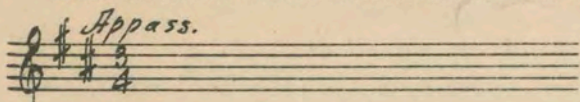
81 (Action) OFFICER KNOCKS ON DOOR Spring Fancies (Marquardt) ¾ Min.

Handwritten: *ffodte*
Musical notation for item 81. Copyright: 1925 Music Buyers Corp

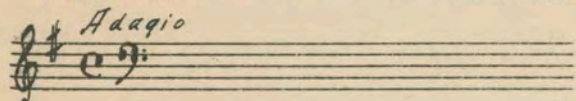
82 (Action) OFFICER LEAVES ROOM Repeat No. 37 "Melody of Love" 1½ Min.



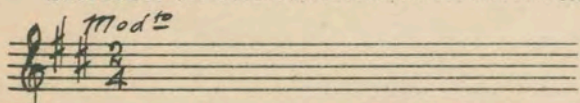
83 (Action) GILBERT CLOSSES DOOR AFTER LOVERS KISS Repeat No. 42 "Chant Russe" ¾ Min.



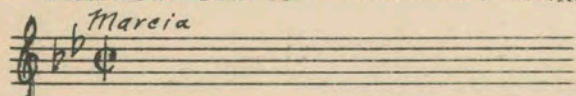
84 (Action) GILBERT WALKS FROM DOOR AND KARENINA Repeat No. 61 (GREEN) ¾ Min.



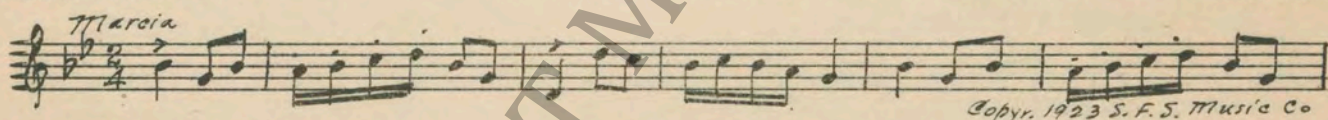
85 (Action) FADE-OUT OF KARENINA TO RAILROAD STATION Repeat No. 81 "Spring Fancies" ½ Min.



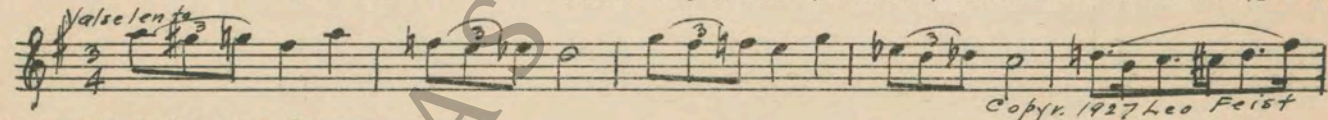
86 (Action) FADE OF CLOSE-UP OF KARENINA AT RAILROAD STATION Repeat No. 35 "Cossack Battalion" (Trio) 1 Min.



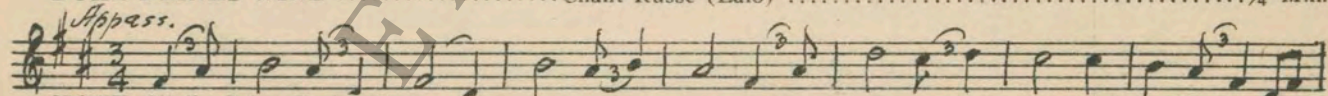
87 (Title) WE ARE ALL HAPPY Russkanna (Schubert) ¾ Min.



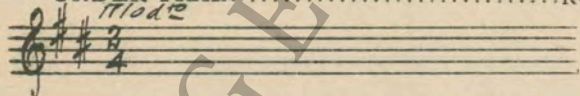
88 (Action) OFFICERS LEAVE BANQUET ROOM That Melody of Love (Donaldson) ½ Min.



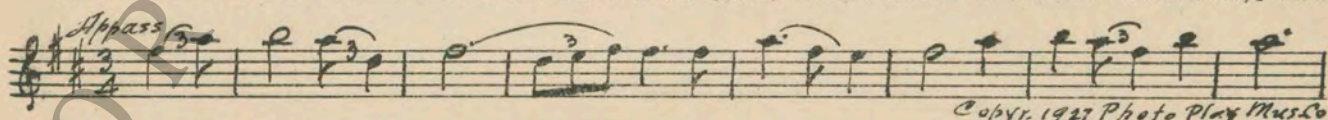
89 (Action) FLASH TO RAILROAD STATION WHEN DUKE DRINKS WINE Chant Russe (Lalo) ¼ Min.



90 (Action) END WITH BIG CRESCENDO CHORD OF D AND CRASH AS KARENINA JUMPS UNDER TRAIN Repeat No. 81 "Spring Fancies" ½ Min.



91 (Action) STATION PORTER MOVES TRUCK AFTER TRAIN LEAVES Chant Russe (Lalo) ½ Min.



NOTE: Play last 14 bars.

THE END

NOTE: The Theme of this picture "That Melody of Love" must always be played in slow tempo.

NOTE: The repetition of numbers in this cue sheet is simplified by the use of the "LUZ" SYMPHONIC COLOR GUIDE, sold by Music Buyers Corporation, 1520 Broadway, New York City. The color suggested for repetition of numbers designates the Mood or Emotion, and is used as a code for such repetitions. Country of Origin, U. S. A.

Complete orchestrations and single piano parts of each separate number contained hereon, can be purchased from CAMEO MUSIC SERVICE CORPORATION, 315-317 WEST 47TH STREET, NEW YORK CITY.